

Discover the Magic of the Flower Show!

Families can work together to complete all these activities (or as many as you can). Check off each activity you complete, and then bring your guide to the Big Red Chair at the back of the hall to collect your prize!

Explore the Mass Hort Exhibit

☐ **Can you find an animal's home in the exhibit?**

It could be a nest, a log, or something else. An animal's home is called a *habitat*. In a habitat, an animal or plant will find everything it needs to live.

Look extra close for a Fairy House.

☐ **Look into the vernal pool!**

A *vernal pool* is a body of water that only appears in Spring. Some animals are born in these pools, such as frogs, salamanders, and insects.

☐ **Do you see a seed hidden in this exhibit?**

A *seed* is a new plant, waiting to grow. Trees, flowers, vegetables, and fruit all start as seeds.

☐ **Can you spot the Fairy Ring?**

A fairy ring describes a circle of mushrooms. These often grow at the base of trees, and can be seen in the summer, often after rain.

Go to the Conference Center to find the Amateur Horticulture and Photography Competitions

☐ **Look for 3 different colors of flowers.**

Plants use different colors to attract *pollinators*, like bees and butterflies. Pollinators make it possible for plants to grow fruits and seeds.

☐ **Can you find a plant or photograph that was entered by someone about your age?**

What would *you* want to enter into the flower show next year?

☐ **With a cell phone, take a picture of a plant!**

Be inspired by the photographs in the Photography competition. Can you capture an image like those you see?

In the Conference Center, explore the Floral Design Competitions and Ikebana Displays

☐ **Do you see a flower arrangement that reminds you of a favorite story?**

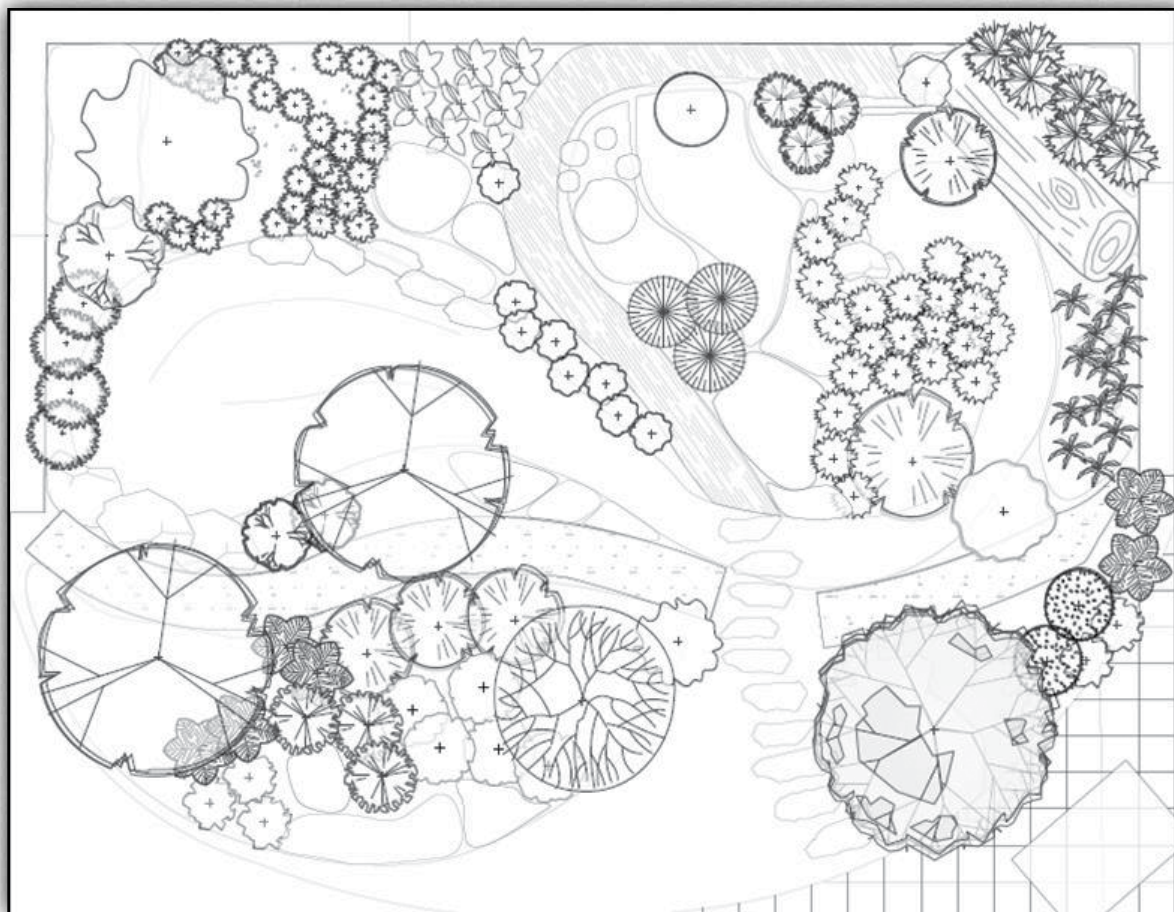
This year's competition has designers create images from Fairy Tales such as *Peter Pan*, *Frozen*, and *Sleeping Beauty*. Designs are made out of flowers!

☐ **Can you find two arrangements that are opposites?**

Some floral designs are tall, some are short. Other designs might have dark flowers, while other might have light flowers. Some designs may have many flowers, others might have only a few.

☐ **Tell someone what your favorite part of the Flower Show is.**

Did you like hearing the peepers at the Mass Hort exhibit? Did you like the colors of the photographs? Was your favorite part the *Frozen* scene made of flowers?



At home, color in the Enchanted Landscape and circle your favorite parts of the exhibit!

Find magic and whimsy at The Gardens at Elm Bank!

Bring your family to explore 36 acres of gardens, including Weezie's Children's Garden designed by renowned designer Julie Moir Messervy.

Weezie's is a series of smaller gardens each planned to engage the senses in unique ways. Weezie's will be reopened early this summer with new and improved features!

Find us at

The Gardens at Elm Bank

900 Washington Street, Wellesley, MA 02482

Want to learn more?

May 1 - October 12, Tuesday through Sunday, Mass Hort will host daily tours that begin at 11, and programs for young garden enthusiasts 10am - 11am. Drop in for songs, stories, hands-on activities, and explorations to discover and enjoy the garden. Meet in Weezie's Children's Garden, children must be accompanied by an adult.

Programs are free with membership or admission

For More Information about family events and programming at Elm Bank visit our website at:

www.MassHort.org/Programs-for-Kids

Cover illustration by Molly Brett

Magic Awaits in Spring



Family Discovery Guide

Find beauty and magic
hidden in the Flower Show...
and in your backyard!

Complete this guide as you explore Mass Hort's exhibit, and the Amateur Horticulture, Photography, and Floral Design Competitions. When you are finished, find the Big Red Chair at the back of the hall to receive your prize!

• • •



MASS HORT MASSACHUSETTS
HORTICULTURAL SOCIETY
At the Flower Show