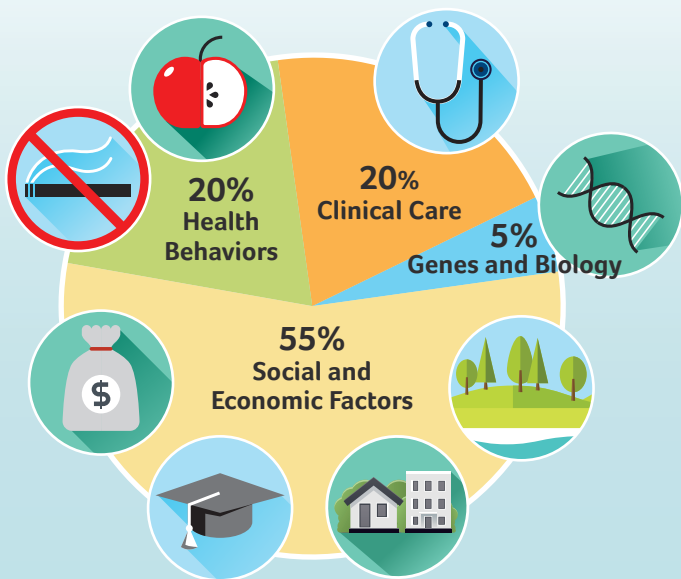


FAIRNESS ACROSS PLACES?

YOUR HEALTH IN PIERCE COUNTY

Health starts where we live, learn, work and play.

WHAT MAKES US HEALTHY?



Adapted from <http://www.cdc.gov/socialdeterminants/FAQ.html>

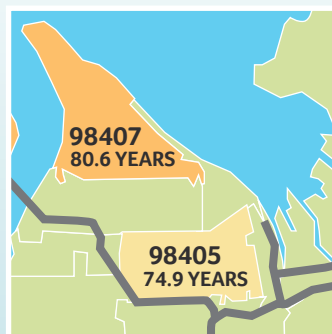
We can work together to create a healthier Pierce County.

Tacoma-Pierce County Health Department cares deeply about health for all in Pierce County. We commit to looking at all our work, including our partnerships and our impact on neighborhoods, to make sure we support fairness across places.

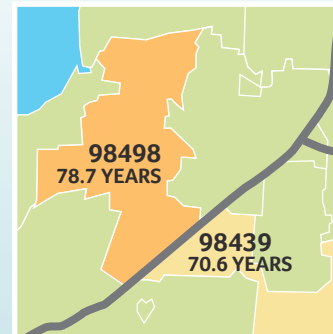


Your zip code impacts your health.

TACOMA



LAKEWOOD



In Pierce County, neighbors living less than a mile apart can have up to 8 years difference in life expectancy.

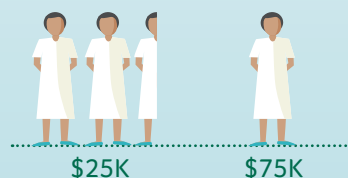
Health is tied to income, education, neighborhood and other social factors.



NEIGHBORHOOD: Places that offer easy access to opportunities have better health outcomes.

People in a neighborhood with **6%** more poverty than another can expect to live for one less year.

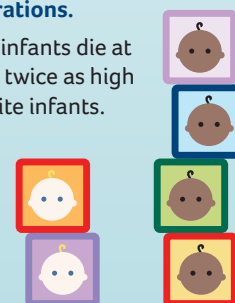
INCOME: How much money you make impacts your health.



People making less than **\$25K** are **2.5 times** as likely to have diabetes as those making more than **\$75K**.

RACE: The stress of discrimination impacts health for generations.

Black infants die at a rate twice as high as white infants.



EDUCATION: Better education can improve health.

35% of people without a high school education experience poor mental health compared to only **9%** of people with college degrees.

Other factors that can negatively impact health outcomes include gender, disability, immigration status and sexual orientation.

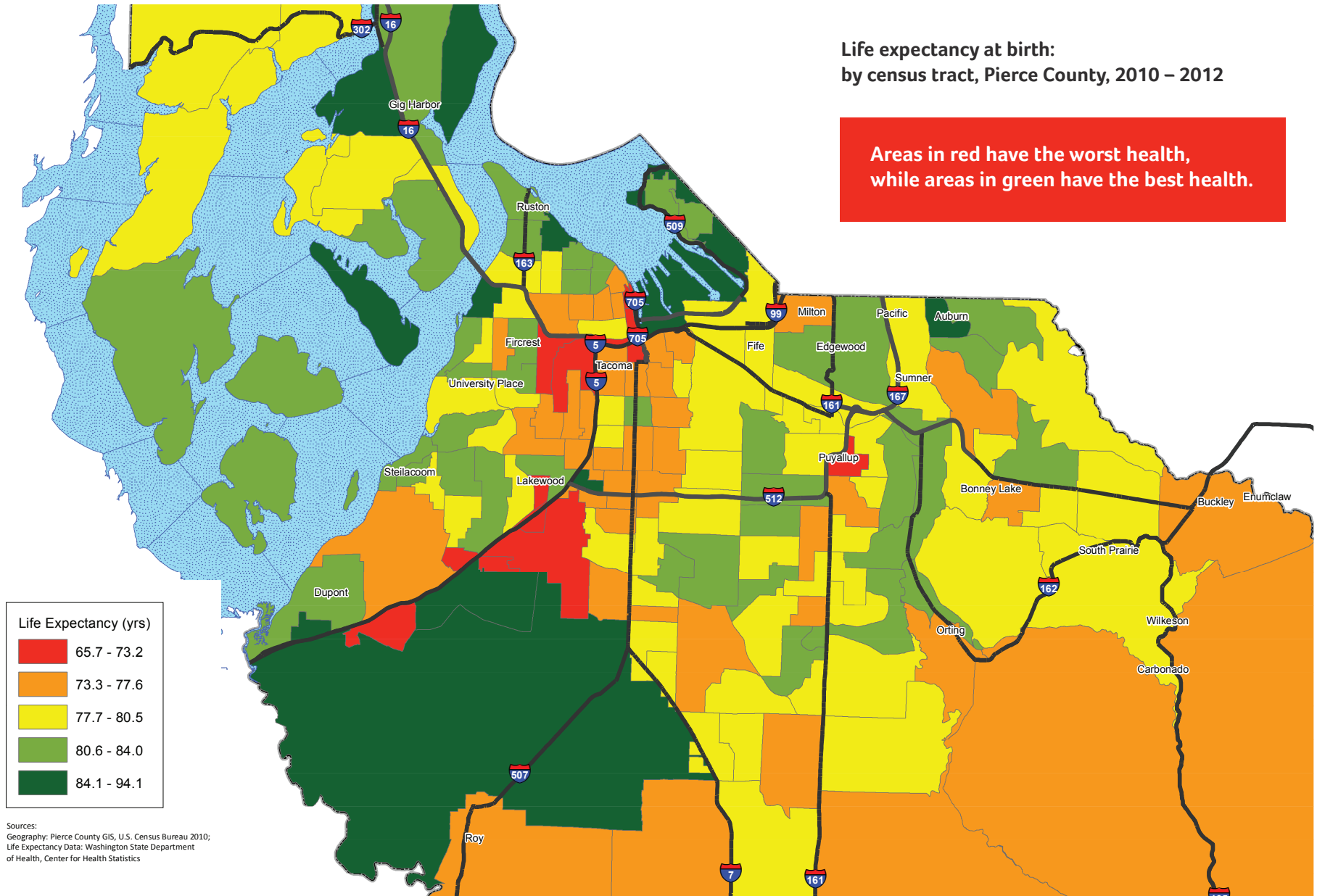
For more information, call (253) 370-5687 or visit tpchd.org/healthequity.

Close but far apart.

2010-2012 census data shows that Pierce County residents may be as much as 20 years apart in average life expectancy.

Life expectancy at birth:
by census tract, Pierce County, 2010 – 2012

Areas in red have the worst health,
while areas in green have the best health.



Sources:
Geography: Pierce County GIS, U.S. Census Bureau 2010;
Life Expectancy Data: Washington State Department
of Health, Center for Health Statistics