

# The Langham Hotel Window Film Project



Jeff Patterson, Eastman  
Tom Wallace, New England Window Film

# The Langham Hotel



## **Problem:**

- The Langham guests were experiencing comfort issues related to excessive solar heat gain.

## **Practical Considerations:**

- The hotel needed a solution which would:
  - Reduce solar heat gain
  - Retain the visual esthetics of the existing windows system (minimizing reflectivity both internally as well as externally)
  - Provide an attractive Return on Investment
  - Minimal long-term maintenance costs/efforts, provide a robust warranty

# Window Film Energy Analysis

## DOE-2 Return on Investment

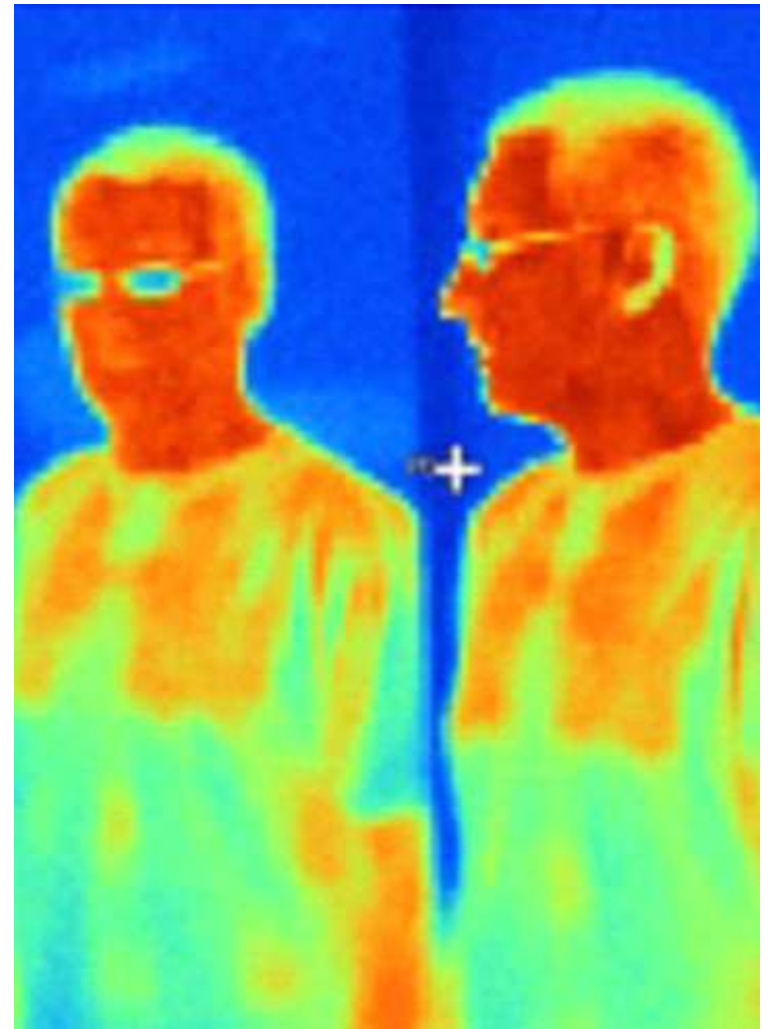
- New England Window Film and Eastman examined:
  - type/orientation of the window system
  - HVAC equipment and hours of usage
  - current annual energy costs for the building
  
- Produced a DOE-2 Energy Analysis Program that shows:
  - 1) Kilowatt Demand Reduction
  - 2) Projected Annual Energy Savings in Dollars
  - 3) Projected Return on Investment in Years
  - 4) Annual CO2 Reduction Values

- EnerLogic Window Film

A Near-Perfect Reflector of Non-Solar Thermal Energy

**EnerLogic does more than any film in history.**

- Emissivity **0.07**
- Visible Light Transmitted 33%
- Ultraviolet Rejected 99%
- Total Solar Energy Rejected 76%
  
- Annual floor space savings/SF **\$0.209**



# ENERLOGIC LOW-E FILM

## Solution for The Langham

- Reduce energy by reducing solar heat gain and radiant heat loss
- Increase comfort of occupants
- Reduce glare
- Correct temperature imbalances
- Enhance the exterior appearance of building
- Reduce fading of interiors





Are There Any Questions?

- Tom Wallace  
New England Window Film

(508) 747-1242