



SPWLA 2015 Spring Topical Conference

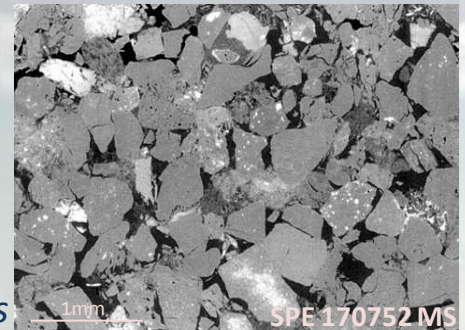
Pore-scale imaging and digital rocks: *Expanding the Petrophysical Toolkit*

May 3-7th 2015, Skamania Lodge, Stevenson, WA

This conference would follow on the successful short course on pore-scale imaging offered during the SPWLA annual symposium in New Orleans in 2013. It's a new, hot topic, and it is generating a lot of cross-disciplinary interest among petrophysicists, geoscientists, and engineers. Pore scale imaging includes microCT and SEM methods. The images, image analysis, and modeling from image data can impact exploration, drilling, completions, and production optimization. This three-day workshop includes sessions on methods, analysis, modeling, integration with other data, and upscaling issues and approaches. A tour to FEI's imaging lab is also available.

Potential topics include:

- *Lab data management and integration*
- *Imaging at nano, micro, and macro scales*
- *Image analysis, 2-D and 3-D*
- *Quantitative SEM imaging data and links to petrophysical measurements*
- *Modeling properties: capabilities and limitations*
- *Applications to reservoir characterization, conventional reservoirs*
- *Applications to reservoir characterization, unconventional reservoirs*
- *Applications to optimizing completions and production, including EOR*
- *Dynamic imaging*
- *Future directions*



ABSTRACT DEADLINE April 1st

To encourage sharing of the latest techniques and ideas, conference attendance is limited and proceedings are off the record.

Go to www.spwla.org to register and for updated information.

Co-chairs: Terri Olson (FEI) and Katerina Yared (Apache)

Steering Committee:

Lyn Canter (Whiting), Mark Curtis (OU), Hesham El-Sobky (ConocoPhillips), Neil Fishman (Hess), Joanne Fredrich (BP), Lori Hathon (Shell), Jop Klaver (RWTH Aachen University), Pal-Eric Oren (FEI), Mark Rudnicki (ExxonMobil), Josephina Schembre-McCabe (Chevron), Carl Sisk (Ingrain), Grant Yip (ExxonMobil)

SPWLA VP of Education: Shujie Liu (BP)