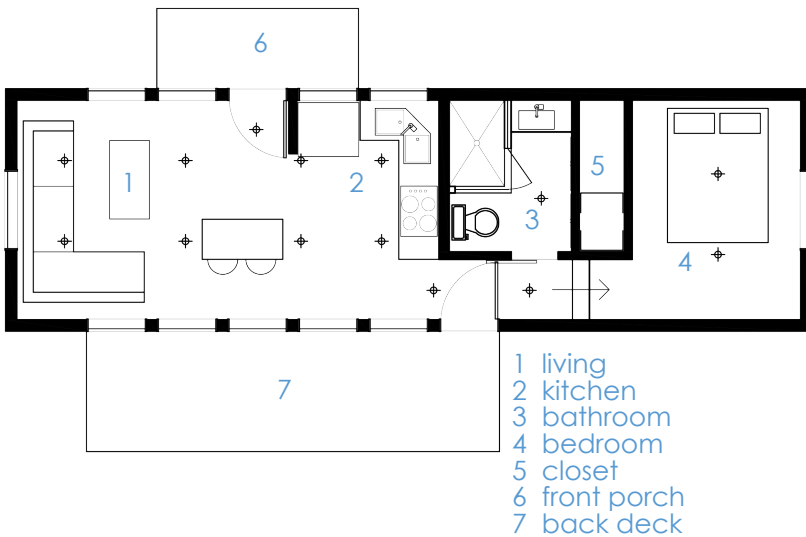




# the Mono



Contact us today for more information!

Dwellings Co.  
460 Turner Street NW - Suite 102  
Blacksburg, VA 24060

[www.dwellingsco.com](http://www.dwellingsco.com)  
[noel@dwellingsco.com](mailto:noel@dwellingsco.com)  
o: (540) 315-4479

The Mono is the modularly constructed, 12' x 40' home offered by Dwellings Co. The efficiently designed layout features a kitchen, living room, bathroom, and elevated bedroom space. This 480 sq ft unit comes with energy efficient appliances: washer/dryer, stove/oven, dishwasher, on-demand water heater, and mini-split heating and air conditioning units. We estimate that The Mono can save you up to 50% on utility bills, compared to similarly sized units.

We also offer advanced technology options including Bluetooth air conditioning, locks, and speakers. Solar panels and back-up generator systems can be added as well. These additions would come at an additional cost that we can discuss with you in more detail.

For maximum structural integrity, Dwellings are constructed with Structurally Insulated Panels (SIPs). These panels are estimated to be 3-4x stronger than traditional stick-built houses and are capable of sustaining heavy snow loads and wind forces. Because Dwellings use panel technology, we can quickly build homes in 6-8 weeks.

