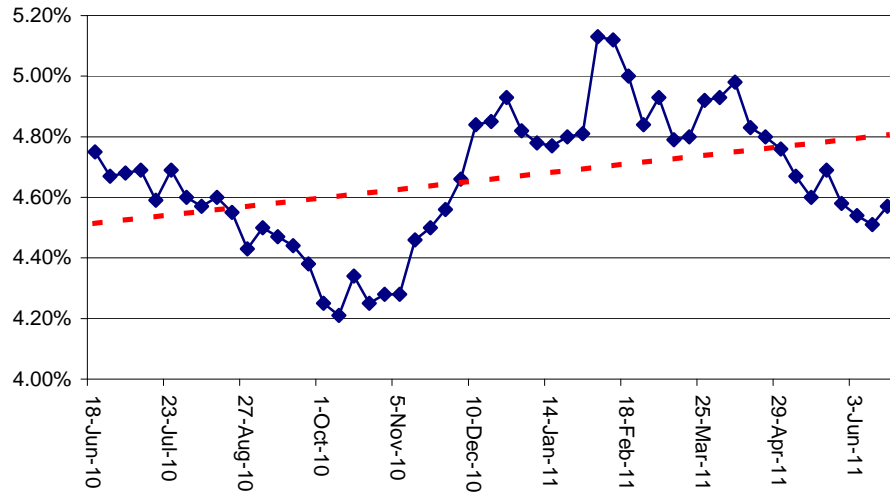


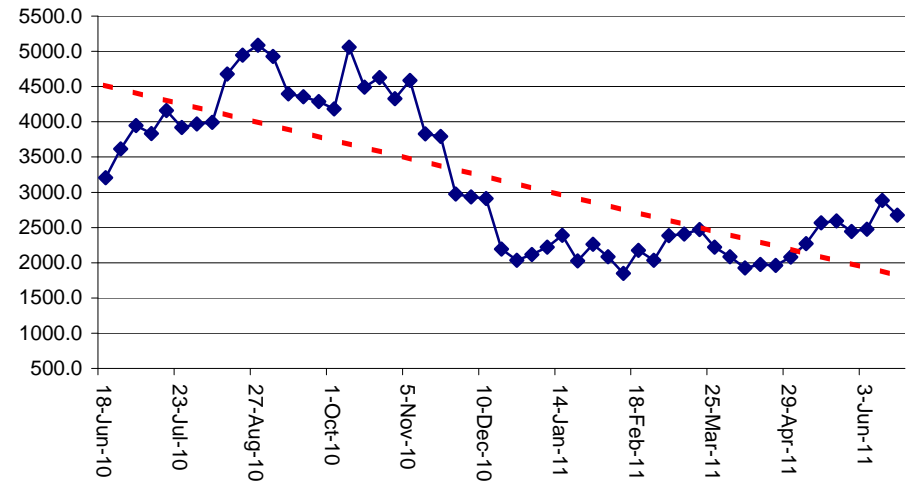
# MBA Statistics - Running One-Year Trend

## Updated through the Week Ending June 17, 2011

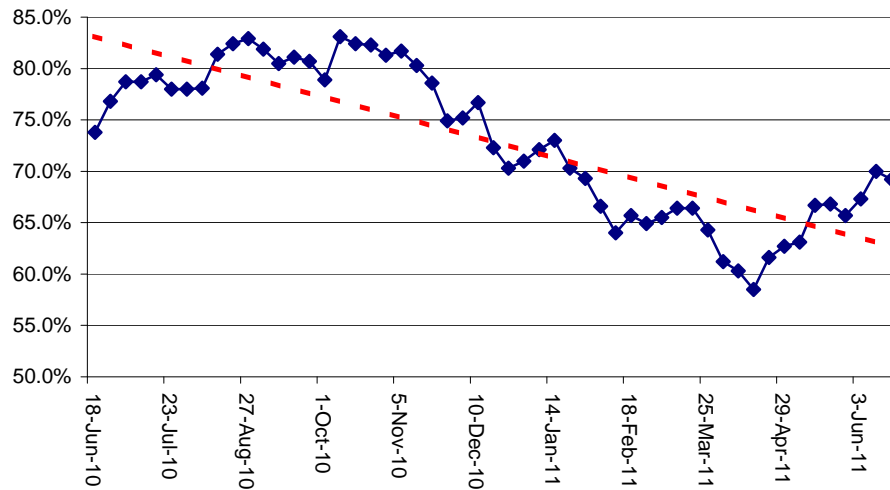
**30-year Mortgage Rates - Running One-Year Trend**



**MBA Refi Index - Running One-Year Trend**



**Refi % of Total Mortgages - Running One-Year Trend**



**Purchase Index - Running One-Year Trend**

