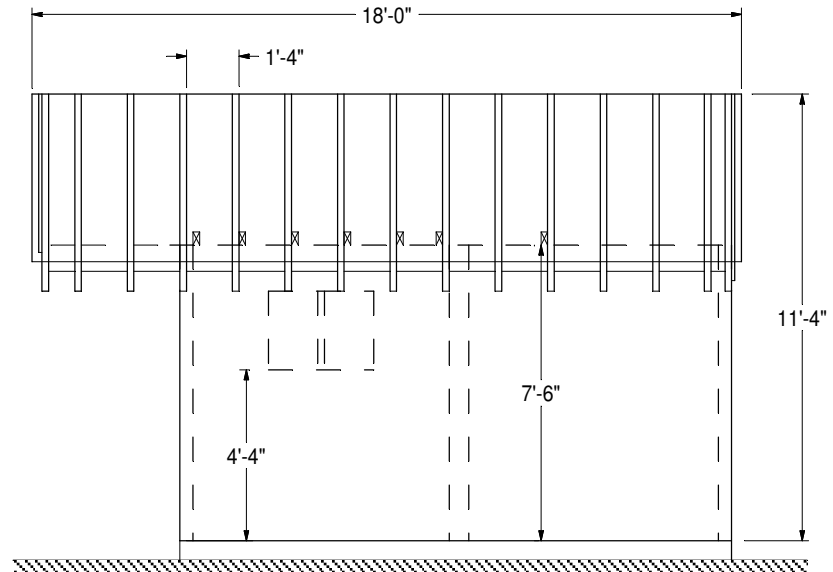
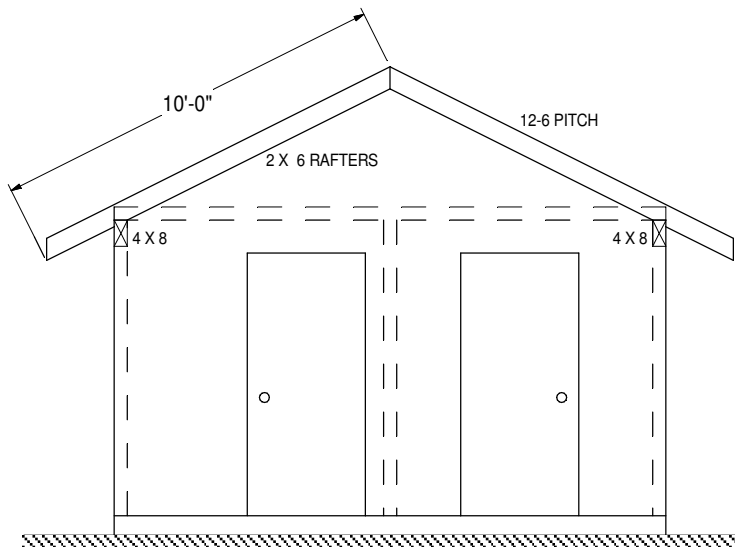


NOTES:

1. 2 X 4 CONSTRUCTION EXCEPT AS NOTED.
24" ON CENTER, EXCEPT WALLS FOR MECH AND TOILET 16" ON CENTER
2. SIDING VERTICAL ROUGH SAWN PINE BOARD AND BATTEN
3. SCREWED METAL ROOFING, 6/12 PITCH
4. ADA TOILET INTERIOR RIGID INSULATION & SHEETROCK
5. 4" BELL SHAPED CONCRETE PAD
6. 2 DOORS 3'-0" X 6'-8"
7. 1 DOOR 2'-8" X 6'-8"
8. BATHROOM WINDOW 32" X 24", TO BE CONFIRMED

MATERIALS REQUIRED:

- 2 X 4 X 8'-0" LONG: 100
- 2 X 4 X 14'-0" LONG: 10
- 2 X 6 X 8'-0" LONG: 8
- 2 X 6 X 10'-0" LONG: 32
- 4 X 8 X 8'-0" LONG: 4
- 1" BOARDS: 1100 BOARD FEET
- BOARDS INCLUDE ROOF.



REV 6: ADDED DIMENSIONS AND NOTES, NEW WINDOW SIZE
 REV 5: CHANGED TO 14' X 14'
 REV 4: ADDED EYE WASH STATION
 REV 3: CHANGES TO FRAMING PLANS
 REV 2: MIRRORED PLAN VIEW