

Shannon Clark/ Bud Nealy "Shrike" Small Fixed Blade

By Chris Fry, PFCTraining.com



When close friend and owner of [Progressive F.O.R.C.E. Concepts](#), Steve Krystek contacted me earlier this year to tell me about a knife he thought I should see he had my attention. Steve and the guys from PFC are known for being extremely critical of the gear and equipment they endorse. If they haven't vetted it, they don't utilize or carry it, no matter whose name is on it. That's refreshing in today's gear-driven tactical and self-defense industry where everyone is cutting kydex, cutting steel or cutting designs in pistol slides, mostly to look good for social media not to meet real

world needs. He then went on to explain the background of one of the designers of said knife, Shannon Clark, and my curiosity spiked. Needless to say, I jumped on the opportunity to check out the "Shrike" small fixed blade collaboration between Clark and acclaimed knife maker Bud Nealy.

If you know knives you've probably heard of Bud Nealy. The very first "tactical" fixed blade I ever bought way back when was a [Bud Nealy Pesh-Kabz](#) with his [MCS - Multi Concealment Sheath System](#). Bud was probably the first custom knife maker that focused on how to carry the knife concealed as much as how to produce a solid, purpose driven blade. Shannon Clark you've probably never heard of. He is a former practicing Doctor of psychology turned Federal Agent, Federal SWAT Team member and current street level "Violent Crimes" investigator working on an inner city gang and drug task force. Shannon has worked in an undercover capacity and at close range with violent criminals for the past 16 years. When Shannon contacted Bud to design a purpose driven small fixed blade for his line of work the "Shrike" was born.



“When interviewing subjects at conversational distances or trying to obtain information, I needed something that would be faster than a gun to get on target. This knife design allows for the maximum blade length for comfortable horizontal appendix carry. The knife is designed to ride close to the body where one’s hand can go unnoticed while it rests on the handle of the knife during conversation. This is not an all-purpose knife. It is designed solely for personal protection. The knife can be deployed with either hand or the sheath reversed for left-handers. The design was created around a reverse-grip, edge-out draw that allows for quick deployment and superior retention. It can also be positioned for forward-grip work with a generous jimping and an aggressive ramp. There is no pommel, as I wanted to maximize the blade length with a comfortable easy-on, easy-off system. The (poly) urethane straps can accommodate different belt widths. The knife fits into a simple integrated and layered system.” – Shannon Clark

“The Shrike”

Out of the box the Shrike’s distinct blade profile stands out. Designed for point-oriented application, the spike-like blade with a slightly swaged half false edge is a penetrator meant to pierce even leather. During some of my non-scientific testing, I was able to draw with my support hand and bury the shrike nearly to the thumb ramp in a stack of cardboard target backers with little physical effort or strength applied. I can see why Clark liked this design for close range, “Oh Shit” situations where space and time is limited. Going for the concealed handgun at these conversational ranges would take longer, thus putting you in more danger.



Product Description

Blade Size/Overall Size: 3
3/4”/7 1/2”

Steel: CPM 154

Handle: Grip-Guard G-10 with
black screws

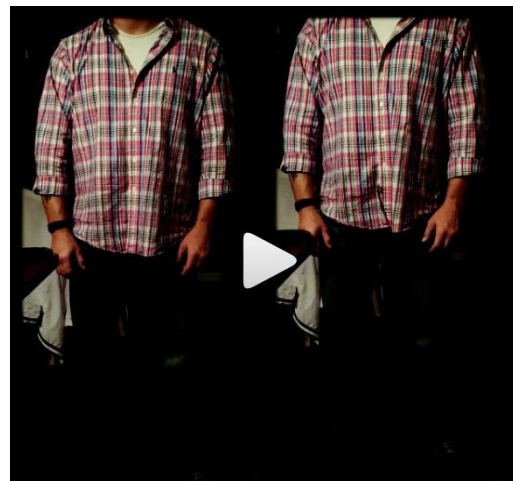
Comments: Hollow ground,
finger grooves, jimping all
around handle, kydex sheath
with polyurethane straps. MCS
System is offered as an option.



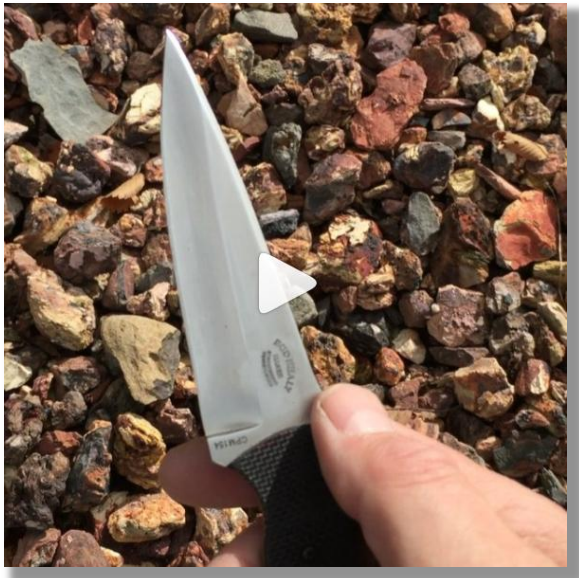
The aggressive G10 handle texture and 360-degree jimping makes accessing the shrike quick and easy with little practice. These multiple cuts improve grip and fine control where space limitations (size) prevent making a more ergonomic design. Made to be worn horizontally on the belt line the smaller than usual pommel-less handle is different than most other small fixed blades I own

that feature at least equal to blade length or longer handles. However, this doesn't inhibit the ability to access or grip the Shrike in any way, especially in reverse grip for which it was primarily designed. Even in forward grip I found it easy to assume and maintain a solid fighting grip. For those who prefer hilt down carry or set-up for a more positive forward grip access, extra rivet holes in the sheath enable you to mount it to a tek-lok or Spyderco G-Clip.

Designed for low profile work and fast access, the Shrike conceals extremely well for a 7.5in overall length knife. Accessing from concealment can be done with either hand from a variety of positions. Saying the Shrike is fast is an understatement and after some practice sessions draw times were consistently under a second. The Shrike's carry system makes it easy to "stage" the hand on or near the knife without notice if trouble is near.



Shrike Video - draws from concealment into both forward grip (left) and reverse grip (right). Click image to go to video.



Shrike Video – The Shrikes straight blade design allows a variety of fighting grips limited only by the end users level of training

The only issue or problem I ran into with the Shrike was one of the polyurethane straps splitting and having to be replaced. Due to the clean line of the split, I'm inclined to think this was due to operator error (ME) catching it with the Shrike tip while trying to re-sheath the knife. This was most likely during an accessing practice session. Since replacing the strap and paying closer attention when re-sheathing the knife this hasn't been encountered again. The poly straps are flexible enough to allow slight movement during everyday activity while still being highly secure.



Over the past several months I've been comfortable carrying the Shrike as often or more often than some of my favorite small fixed blades. It's found a regular place in my every day carry line up. There are a lot of custom knives out there but the Shrike is a stand out due to the real world experience of its designer and excellent reputation of its maker. If you're in the market for a "Fighting Knife" you can depend on check out the Clark/Nealy Shrike small fixed blade at the [Bud Nealy Knifemaker Website](#). To contact Shannon Clark about knives or personal protection training, email the.tactical.doc@gmail.com.