

**"The Downtown Church"**  
**FIRST PRESBYTERIAN CHURCH**  
of Coeur d'Alene



**2014 ANNUAL REPORT**



## Staff

- Pastor | **Rev. Craig Sume**y
- Director of Communications & Community Outreach | **Steven Balas**
- Office Manager/Admin Assistant | **Becky Clegg**
- Youth Leader | **Kierstie Shellman**
- Music Director | **Judy Flieger**
- Director Children & Family | **Lou Pennebaker**
- Bookkeeper | **Erica Waterman**
- Pianist | **Kim Cheeley**
- Glory Be Director | **Susie Freligh**
- Nursery Director | **Jennifer Stevenson**
- Custodian/Groundskeeper | **Gene Adkison**
- Tech Engineer 9am | **David Johnson**
- Tech Engineer 9am | **Joe Lee**

## Lay Leaders

- Clerk of Session | **Buzz Hays**
- Women's Association Moderators | **Laura Coffman & Teresa Brown-Douglas**
- Head Deacon | **Teri Burch**

### With Thanks To:

- Editing/Compilation | **Becky Clegg**
- Editing/Proofing | **Laura Koepke**

## Table of Contents

Pastor Craig.....	4
Clerk of Session.....	6
Director of Communications.....	8
Office Manager/ Admin. Assist.....	10
Music Director.....	12
Director of Children & Family Ministries.....	14
Youth Leader.....	16
Missions.....	18
Welcome.....	20
Membership.....	21
Technology.....	22
Worship Design.....	23
Small Groups.....	24
Dream Team.....	26
Community Outreach.....	28
Personnel.....	30
Building & Grounds.....	31
Glory Be.....	32
Family Promise.....	33
Stewardship.....	34
Women's Retreat.....	35
Deacons.....	36
Adult Discipleship.....	38
Women's Association.....	39
CRE.....	40
<b>FINANCIALS</b>	
2015 Budget	
Operations.....	42
Properties.....	44
Glory Be.....	45
Balance Sheet.....	46
Analysis - Profit and Loss	
Operations.....	50
Properties.....	52
Glory Be.....	53
Balance Sheet - Glory Be.....	54
Deacon's Report.....	54
2014 Statistics.....	55



**Far Left:** Passing the Peace on a Sunday morning. **Left:** Getting ready for the Christmas "Un-Pageant," with Slade Hass as baby Jesus and parents Andy and Kynda as Joseph and Mary.



## From Pastor Craig

I've been flipping through my planning calendar from last year, and found myself looking back on some really great things that happened in 2014 at 1stPres CDA! Here's a somewhat chronological list of my high points...

- Steve Schibsted speaking at 1stPres Annual Leadership Retreat
- Next Generation Men's mentoring and new Women's Mentoring Group
- Lent Wednesday Noon prayer services
- Our first Bolivia mission team visits Niños Con Valor
- New Family Promise coordinators and retiring 'veteran' coordinators
- Welcoming awesome new staff - Lou (Children & Family), Kierstie (Youth) and Joe (11 am Tech)
- Challenging Message Series -The Story of Christianity, Hospitality, Power of Words, Prayers of Jesus, Overcoming Sin, The Bible, Triple Win, Under God's Tree.
- A new Prayer Shawl ministry
- The first All-Church Women's Retreat in many years

**Wow! God gave us a great 2014! But 2015 looks even better!**



- Redecorated "Sojourn" and "Soul Café" Sunday Gathering Areas
- 1stPres' Downtown Farmers Market Parking Lot Palooza booth
- A new church photo directory with lots of new faces
- Cynthia's final piano concert and appreciating her 17 years on the staff, also recognizing Kendra's five years as Youth Director
- The Dream Team is formed, begins meeting, invites community leaders to all-church forums, conducts surveys, begins to see our future emerge!
- Erica's Commissioned Lay Pastor internship at 1stPres and Heritage Place
- Bringing back children ringing the church steeple bell before Sunday services
- Back to School Sunday and Block Party
- First ever Trunk or Treat at Downtown CDA's Halloween Night (over 3000 people!)
- Friday night Parents' Nite Out and Potlucks

- The worship music of Ann Krugel and Kim Cheeley
- Big Table Unexpected 20's and Holiday Blitz
- Choir Cantatas, Bell Choir programs, and Praise team joy
- Our first Christmas Children's Un-Pageant!
- Serving Christmas families, Turkey Fund families, Sorenson students, Clothing Giveaway families, and people coming for free Thursday lunches,
- Meeting newcomers at Seasons, baptizing children and adults, sharing life with ChristCare groups, visiting and praying with people in times of need or illness,
- And all the rest which happens behind the scenes every year and all contributes to our amazing mission and impact as the Downtown Church.



Wow! God gave us a great 2014! But 2015 looks even better!

- A multi-year, Lilly Grant endowed partnership between 1stPresCDA and Whitworth University will give us the awesome resources of this regional Christian resource for leadership development, paid full-time student summer internships, and whatever help we need for pursuing our mission.
- The Dream Team's report, using feedback from you and the surrounding community to create new Core Values and Mission Statement and a big impact 5-year strategic plan. (Look for that in mid to late Spring.)
- Great Children & Family Ministries like the new Children's Sunday School ARKade, new summer



Pastor Craig & Lynn Sumey on vacation.

programs, and the increasingly popular monthly Friday family events.

- 1stPres Mission Team travelling to Niños Con Valor in Cochabamba, Bolivia in June (support the team by attending the auction lunch on Feb. 8 following a combined 10am worship gathering).
- Creative ways of blessing and connecting with our community like last year's Parking Lot Palooza, Back to School Block Party and Trunk or Treat.
- More entry points for growing faith including ChristCare groups, men's and women's mentoring, and a great new Adult Learning Experience called "Christianity Explored" coming this Spring.
- A new sanctuary video system for enhancing worship and making messages available as videos on our website.
- Welcoming new and expanded staff positions (new Receptionist, Worship Musician and Praise Team Leader, 2nd Youth Leader, expanded Communications & Outreach Director, expanded Church Administrator).

As I shared a few months ago, 2015 is, in many ways, the year I came here for: a year when the next chapter of 1stPres unfolds for inward strength and a compelling sense of our mission field and how to reach it for Christ. But none of this is possible without your vision and generous support. I love serving you as Pastor and look forward the most to watching all of YOU enjoy and participate in the exciting next year for the Downtown Church.

In Christ's Service and Yours,

**Rev. Craig M. Sumey**

Pastor/Head of Staff

Email: craigsumey@gmail.com



# From Your Clerk of Session

Your Session has and continues to meet diligently on the fourth Tuesday of each month except when meeting dates and times require change to meet special needs. As always, there were a few special Session Meetings required. However, all special meetings were preceded by proper notifications and properly called and had a quorum present to conduct church business. Session operated most of the year with a full slate of 18 Elders. However, in the fall, the resignation of Annie Lowry was reluctantly accepted as was the resignation of Don Campbell at the end of October, Annie for job related reasons and Don due to relocation to the coast.

It is time to say goodbye to the class of 2014 and welcome the class of 2017: Paula Anderson, Glen Armstrong, Jason Boni, Dan Brown, Becky Shellman and Bill Smith. In addition, we welcome Kendra Johnson and Steve Peterson, both filling the two existing vacancies for the class of 2015 created by the above listed resignations. This is a wonderful group of people with excellent leadership skills. We look forward to their fresh input and new ideas.

Pastor Craig Sumey has acted as moderator for the Session throughout the year. Under his leadership, the church continues to grow as he spearheads new projects and programs within the church. His implementations and style of open communications concerning all activities within the church has been exemplary. He is working very closely with the Dream Team to advance the church in the future and is fully involved with the activities of all ministry teams and programs within the

church. We have been and continue to be financially stable, through the generosity of our church family, as we focus on being a downtown church providing healing and caring within the community. Plans are to continue the programs which have been mounted thus far as we move forward with appropriate endeavors for growth, stability and doing the work God puts before us.

As always your Session has discussed many issues and made many decisions which affect our church as we move forward. There is always much concern with accompanying discussions when issues are brought before the Session. I am extremely happy to report that these discussions and the decision making process has always been done with the best interests of the church and congregation in mind and always in a civil and caring manner for all participants in the process. I will miss working with this fine group of people as I conclude my term on Session as a member of the class of 2014.

I want to congratulate and praise my predecessor who was Clerk of Session for the past several years and worked fervently on your behalf. I only filled his unexpired term for a few months; he did the job over the long haul. I want to thank him for all of his hard work, dedication and many long hours serving us all.

**Thank You Don!**

In Christ,  
*Buzz Hays*  
 Clerk of Session

## 2014 SESSION

### Class of 2014



Becca Memmer



Bill McCarty



Kris Hannigan-Luther



Peter Van Sickle



Donna Schwandt



Buzz Hays

### Class of 2015



Annie Lowry



Don Campbell



Warren Bakes



Linda Jones



Jackie Valez



Yvette Wyatt

### Class of 2016



Jim Douglas



Max Faller



Suzy Jolley



Margie McCoy



Allen Miller



Travis Park



I couldn't have been prouder of having the honor of being your Clerk of Session these past four years. I was able to witness the Session hard at work making needed tough decisions in unity and love to further the work of Christ in our church community. Love to all from Anacortes.

*Don Campbell*

**...what you have  
whispered in private rooms  
will be shouted from the  
housetops.** Luke 12:3



## From Your Director of Communications & Community Outreach

What an amazing year it has been! For me it has been one of the best of my life. I have thoroughly enjoyed getting to know this church and the special character and “vibe” that is First Presbyterian. This is a very active church. A lot goes on here! A lot of good and wonderful doing, and giving, and service to others – most of it happening quietly behind the scenes.



As Director of Communications & Community Outreach it is my duty to shine a light

on all this and make sure everyone in the church is fully informed about these “going-ons,” and to let the community around us know the highlights of our activities – and to do this all in an accurate, professional manner that honestly reflects who we are and what we are about. Have I been successful at this over the last year? In some ways I have, but I can also see there is so much more I could do to do this job better for you. In the 16 months that I’ve worked here I’ve learned a

tremendous amount – but looking at what still needs to be accomplished I can see there is much, much further that I need to go.

Are you all fully informed on everything that goes on at First Pres? Is the community around us able to see through the walls and into the heart of this church? Do all our communications and promotional materials accurately reflect who we are? Hardly. But there has been good progress made in all these regards in 2014. And I don’t mean necessarily by “me.” Look at

**Be devoted  
to each other  
like a loving  
family. Excel  
in showing  
respect for  
each other.**

Romans 12:10

what a wonderful job the Welcome Team did all year in sharing the warmth and love of First Pres to every new face that walked through these doors. And what about the fantastic newcomer receptions they put together to help draw people in and make them feel welcome.

Think about all the cool events that the Community Outreach Team put together this year. The Parking Lot Paloozas and the Block Party – where volunteers went door-to-door in the community to hang flyers and personally invite people to come. And wasn’t Trunk-or-Treat amazing!?! We certainly shared the spirit of First Pres with the community at those events.

We certainly shared the spirit of First Pres with the community at those events.

And what about the fantastic job the Membership Team did in putting together the church directory? It was a much bigger project than our last directory, with way more people having their picture taken for



it. Incidentally, something else great that came out of the directory project was the launch of the newsletter “First Press” that one of our newest members, Laura Koepke has been publishing and sending to our shut-ins to help keep them better informed and to remind them that they are still an important part of the First Pres family.

It has truly been a pleasure to serve on these committees. I have been humbled over and over again by the willingness of people in this church to step forward,



roll up their sleeves, and pitch in. You are a wonderful and amazing congregation. I have found myself, on many occasions, bragging shamelessly about you all, and the special love that is here. Your ears must have been burning something fierce – because I would go on

and on to whoever would listen - until they were willing to listen no more.

I believe you have

managed to make real what Paul was getting at when he said in Romans, “Be devoted to each other like a loving family. Excel in showing respect for each other.”

This is an amazing accomplishment. And one that deserves to be shouted from the rooftops. Which



is exactly what I plan on doing in 2015 – to let people in the community know the wonderful warmth and love that is waiting for them here at First Pres. But I can’t do this alone. Just as none of the 2014 accomplishments I’ve talked about were done by me alone – far from it, I’m only a small part of a big team. First of all, there’s the hard working and talented staff, without whom nothing could get done, there is our gifted and caring Pastor, who gives insight, focus, and Godly direction to all that we do, and then of course, there is all of you.

We are the team, hand picked by God, to work together to accomplish amazing things for Him. I am delighted to be on this team with you and I look forward to working with you in 2015 to reach out to the lost and hurting in our community and bring them “home” to First Pres.

With Much Love,

**Steve Balas**

Director of Communications &  
Community Outreach

**PHOTOS | Below:** Just some of the candy that was collected for Trunk-or-Treat. **Top Left:** Volunteers preparing for the Parking Lot Palooza. **Bottom Left:** When you are part of a good team your problems seem so much smaller.



## From Your Office Manager/ Administrative Assistant

**A**nother exciting year in the books for your Office Manager and Custodian. I am always amazed at the dedication of our volunteers and their heart for serving the Lord. First Presbyterian Church is certainly a thriving and busy church. Each week brings new challenges and new opportunities around every corner. I want to thank all the volunteers for giving us feedback and support during the year. Your input helps us to serve you better and grow in our work as your staff members.

Gene Adkison continues to work diligently to keep the various building areas clean and assist with all manner of staging for a multitude of meetings and major events. He also maintains the sidewalks and surrounding outside building areas keeping them free from debris, leaves, snow and ice along with some roofing repairs. He worked hard with the Building & Grounds team to landscape the front of the administration building with new red rock and plants this past year. It made a tremendous impact on visiting guests and many of you commented how



nice it all turned out. Gene is a valuable addition to our staff and says he “loves his job here”.

We appreciate the kind words and encouragement from members as he continues to demonstrate a strong work ethic on behalf of our congregation. We hope to continue our efforts to clean up a variety of rooms that are in need of organization. We also look forward to working with the Building & Grounds team through work parties and other maintenance issues.

Last year I was privileged to work with a

Task Force consisting of Suzy Jolley, Linda Jones and Jim Douglas. We were tasked with designing a new, more inviting gathering area in the Hunter Building for Sundays. With the support of Session, we launched the Soul Café with new tables, bistro sets and a beautiful mobile Welcome Center. We also purchased banners for Sojourn (Gym) to brighten up the coffee/donut fellowship area. I am currently assisting with the Dream Team meetings and forums. The twelve members of the Dream Team are truly a

gifted group with a heart for the future of 1stPres.

This past year I continued to handle the e-newsletter and iPRAY communication pieces and have thoroughly enjoyed writing a bi-weekly blog. I also assisted with other aspects of church communications such as updating the website with pastor messages and notes. I worked closely with Steve Balas, Director of Communications, for the new church directory, the Lent and Advent e-devotions and booklets as well as the Annual Report.

### **Another exciting year in the books for your Office Manager and your Custodian.**

Other tasks that I have delivered on a weekly basis are worship bulletins, announcement and song slides for each worship service, supplies acquisition, phones, assisted with network issues, office management, calendar administration, and updating the church database. I enjoy working with all of the ministry teams to secure appropriate meeting space and also outside groups using our facilities such as AA, ARMS, Blue Jeans Volleyball, North Idaho Thunder, Sorenson School Jugglers, Family Promise, CDA Opera, and Farmers Market. It has also been rewarding to work with outside performing groups who used our sanctuary to share their talents such as the NIC Cardinal Chorale, NIC Chamber Orchestra, Spokane Choral Artists, and Northwest Sacred Music Chorale.

As your Office Manager, I facilitate necessary repairs throughout the building with Gene’s support, work with security and safety procedures, and also help coordinate special improvement projects such as roofing repairs and securing a new/refurbished dishwasher. Gene and I work with the Ecumenical Food Kitchen crews from several local churches each week to make sure we have an inviting place for the homeless and disadvantaged to enjoy a warm, hearty meal. As your support team, Gene and I assist with weddings, ChristCare breakfasts, Women’s Association programs, funerals, Deacon’s Clothing Giveaway, Choir cantatas, and the annual Fair Trade Festival to name a few venues. Working with the Clerk of the Session, Elders, Deacons,



a myriad of volunteers and our Pastor has truly been a special blessing for me. I also appreciate the chance to work with such a talented and dedicated staff. We are so fortunate as a church body to have a great team led by Pastor Craig.

Becky gives hoola hoop lessons to Kendra Johnson much to the delight of Charles Setzer.

Both Gene and I look forward to 2015 as we serve such a vibrant church membership. I also would like to thank those individuals who through their volunteering, help make our jobs run smoother. They are: Donna Schwandt, Doris Clemans, Evie Oakland, Laura Koepke, Judy Flieger, Eric Fehr, Bill Smith, Allen Miller, Charlie Branch, Buzz Hays, and Peter Van Sickle. Gene and I would like to thank the congregation for your tremendous support as we continue to meet the challenges of a large facility and hopefully the needs of her members. Your encouragement to staff is appreciated and valued.

God bless you all,

*Becky Clegg*  
Office Manager/Administrative Assistant



# From Your Music Director

The music program for 2014 had another successful year. The Adult Choir prepared two Cantatas. Our Easter presentation was a "Tenebrae" service by Joseph Martin. We were accompanied by the community orchestra and Cynthia Marlette. It was a moving account of the events leading up to Christ's Crucifixion. Our Christmas presentation was by Pepper Choplin titled "I heard A Prophet Callin'." This was a lively set of music and enjoyed by all that worked on it and was well received by the congregation and the community. Once again we were accompanied by a chamber orchestra from the community and Kim Cheeley as our accompanist. According to many this was one of our best Cantatas to date.



This year saw some major changes. Our long time Organist and Accompanist, Cynthia Marlette, resigned her position. We were very sorry to see her go and sent her off with a congregational get together and our well wishes. We were very fortunate to have Ann Krugel step in and fill an interim position

until her and her husband left to go to New Zealand for the winter. Kim Cheeley has been our accompanist for the congregational singing and the Choir anthems. We have been very blessed to have her with us.

The InJoy Ringers had a good year beginning



Saying good-bye to the very talented Cynthia Marlette.

with a Lenten program in March and a Festival of Carols presentation in December. Our goal is to play every other month and work on programs for special occasions such as Advent and Lent. We are becoming a cohesive group and the level of commitment is great; especially since we meet at 7:30am every Sunday morning. For many of my ringers, it is a long day because they also sing in the adult choir for both services. I am truly appreciative of all of our ringers for sharing their time and talent.

I have had a fun year being involved with the Worship planning and design team. I think we have a very creative and dedicated group of people who want to make our worship meaningful and relevant for all ages. It has been a challenge for me this year to work with different people. It has also been a year of growth. I am grateful for the opportunity to work with the Adult Choir and Bells as we strive to be a blessing. Our ultimate goal is to give our best and make it our offering to the Lord.

We welcome any newcomers to the choir that meets on Thursday evenings at 7pm. The InJoy Ringers meet on Sunday mornings at 7:30am and welcome anyone who would like to be an alternate ringer. God bless all of you.

In His service,

*Judy Fliieger*  
Choir and Bell Director

Left: Judy directs the delightful Christmas Cantata, "I hear the Prophet Callin'."



**Photos from Top:** The congregation is invited to join the choir for the Alleluia Chorus; the Brownlees' wonderful worship service; our talented InJoy Ringers make the bells sing; a thumbs-up from Derek Sumey, on the electric guitar for the Praise Team.



# From Your Director of Children & Family Ministries



**I**t was January, 2014 when I first saw the job posting for the Director of Children & Family Ministries at First Presbyterian Church, Coeur d'Alene, ID. At first I didn't give it any thought. Then I started wondering, "What state is abbreviated ID?"

That must be Idaho. Hum... where exactly is Idaho?" I googled Idaho first, then Coeur d'Alene and I looked at the church website. Hum. Then, I opened and read the job description. Hum. It was the perfect job description! I wondered, God wouldn't call me to Idaho, would He? Then again God called me to Las Vegas! After some time of prayer and discernment, I decided to apply for the position and see what happened.

Throughout the spring of 2014 I prayerfully considered and continued through the application and interview process. Over time it became more and more clear that God was calling me to Coeur

d'Alene, Idaho. In May, I was offered and accepted the position of Director of Children and Family Ministries at First Presbyterian Church. It was difficult to leave the children and families I had ministered to and with for so long in Las Vegas but I knew that there were many new children and families in Idaho to whom I would soon have the honor and blessing of ministering to and with.

I arrived in Coeur d'Alene mid-July and began getting to know the children, families, congregation and community right away. I taught summer Sunday school, assisted Nancy Mueller with the Cooking with Kids classes and painted faces as part of the church Parking Lot Palooza at the Downtown Farmers Market on Wednesdays through the month of August. The Parking Lot Palooza was a wonderful way for the downtown church to not just be the church that is located downtown but to actually step out of our front door and participate in the life of the community. As we became a part of the community we were able to interact with and invite the people of the community to be a part of 1st Pres.

In September we marked the end of summer and the return to school with a "Back to School Sunday." A single worship service at 10:00am included a Teacher and Backpack Blessing with 50 students from preschool through college coming forward with their backpacks for prayer. After church all ages gathered in the gravel parking lot for a Back-to-School Block Party with Bounce House, face painting, BBQ lunch and BINGO. It was an amazing day that blessed many students and teachers in our congregation and community.

**Photo Top:** Recreating the manger scene.  
**Left:** Sunday morning Prayer Huddle.



Two new children's Sunday school classes began in Sept. An Early Childhood class for 3-5 year olds called the Preschool Pond at both 9:00 and 11:00. The curriculum consists of Songs, Prayers, Lessons At Sunday school and Home or SPLASH! and is based on traditional Children's Bible Stories. At 9:00 a special First Five Sunday school class for 1st & 2nd graders focuses on the Books of the Bible. Specifically the First Five books of the Old Testament one year and the First Five Books of the New Testament the second year.

Pot Luck events on alternating months. These events are coordinated by Jane Penney with the assistance of many volunteers and are a tremendous blessing to the children and parents of 1st Pres.

In addition to working with the Children & Families Team, the many Children's Ministry Volunteers and ministering directly to the children and families, I have enjoyed working with the Worship Design Team, Community Outreach Team and occasionally assisting the Youth Team and Youth Leader, Kierstie



**From the Left:** Jane Penney who served as Interim Director of C&F and continues to serve as a volunteer; the delightful Un-Pageant got everyone involved; Lou paints happy faces at the Parking Lot Palooza this summer.

In October, 1st Pres. again stepped out our front door and participated in the community reaching out to literally 1,000's of children and families who participated in Trick-O-Treat Downtown Coeur d'Alene. 1st Pres. offered a Trunk-O-Treat at the corner of Sherman and 6th Street with nine different theme decorated vehicles and gave out almost 400lbs of candy and 1200 glow sticks with an invitation to attend 1st Pres. to approximately 1300 Trick-O-Treaters, and their families.

Throughout the month of November, the older elementary children of 1st Pres. created a photo slide show that was shown in worship illustrating the Lesson and Carols presented by the Bell Choir. All children 5th grade and under who attended worship on Dec. 21st were invited to dress up as Shepherds, Sheep, Angels or Wise Guys or Gals and acted out the Christmas Story in an un-expected, un-rehearsed, un-forgettable Children's Christmas Un-Pageant. The rest of the congregation participated in the story adding sound effects throughout the story.

The Children & Family Ministries Team has also continued to offer Parent's Night Out and Family

Shellman. I also enjoy leading weekly Chapel for the children of Glory Be and facilitating children to ring the church bell on Sunday mornings at the beginning of the worship services.

I am so grateful and blessed to be here in Coeur d'Alene and serving at 1st Pres. My first six months have not been without the trials and challenges of moving to a new community, starting a new job and the complication of selling my house in Las Vegas (which finally closed on Dec. 31st!) and buying a house (which I love!) in CDA. But God remains faithful and continually confirms that this is where He has called me to serve. I am excited to see what God will do both in and through the children and families of 1st Pres., the church as a whole, and the downtown community, in 2015 as together we serve God as the Downtown Church of Coeur d'Alene, Idaho!

Blessings, Luv Lou

**Lou Pennebaker**  
Director of Children & Family Ministries

# From Your Youth Leader

One of my favorite songs over the course of this past year is Hillsong's, 'Oceans'. "Spirit lead me where my trust is without borders..." are lyrics that've spoken deeply to my own life, and particularly my calling to this ministry starting in late June of 2014. After returning from a month of mission work in Guatemala and a Whitworth leadership retreat, I began a completely new adventure: youth ministry. This year has been full of surprises and amazing growth, and I'm blessed to work with such an incredible group of youth.

Over the summer, THE Downtown Youth Group (DYG) had many Monday night adventures, taking full advantage of the beautiful downtown area in which we reside. We focused on building relationships, and enjoyed our weekly fellowship. For the first hour, we explored the different Fruits of the Spirit: love, joy, peace, patience, kindness, goodness, faithfulness, gentleness and self-control. The summer was a time of growth for everyone. It was really encouraging to dive a little deeper into study each week, with the youth bringing fantastic questions to ponder as we related the Fruits of the Spirit to our own lives. During our second hour, we would fellowship downtown. These kids sure love their pizza and ice cream, and they can eat a lot of it! Sometimes we'd stick around for a bit to play some ping pong, foosball, and carpet ball, which are all youth favorites and easily accessible in the new youth room. That room was remodeled before I stepped in thanks to Kendra Johnson who led the youth for many years. The room has been such a huge blessing. Thank you to all who supported the remodel efforts, we really appreciate such a neat space to call our own.

One way the youth really jumped into hands-on



There were some scorching hot days, and also days we got stormed out, but with bubbles, face painting, and of course the bounce house, they really had a lot of fun serving.

One of my goals for the summer was not only to bring the youth together in meaningful times of fellowship, but also bring together the families. We were



Kendra Johnson who served as our creative Youth Director until this year; smiling with Emma.

able to enjoy a family fun day, on beautiful Hayden Lake. Many youth families joined us for swimming, paddle boarding, tubing, and a barbeque. There were many water wars; Pastor Craig and some other folks even took the ice bucket challenge down on the dock. This was definitely a great

addition to all of our summer activities. We concluded the summer with one final pizza night and a movie. We watched 'God's Not Dead'. The youth engaged in deep conversation and healthy discussion after the movie.

In late September, some of the youth and I attended a Youth Worship Conference held at Whitworth University. We explored the different aspects, styles, and traditions of worship. Each of the youth was able to engage in specific training for their particular musical gifts, while I was able to grow, learn, and connect with youth directors from around the region. I really believe this was a great conference that allowed our youth to further develop and be encouraged by their music gifts. Shortly after the youth conference, after a lot of prayer and support, I returned to leading DYG. This ministry is a place I really feel called, and I was excited to return

service was at the weekly "Parking Lot Paloozas", which happened every Wednesday during the Downtown Farmer's Market. The youth enjoyed being energetic hosts to the kids in the community.

with big plans and a long term vision.

Over the course of the holiday season, we had two incredible youth parties. Our harvest party in October was filled with games and laughter. We did minute to win it games, toilet paper mummy wrapping, pumpkin carving and a movie. I thought I had overestimated the amount of candy the kids would eat, but low and behold, at the end of the night, only a couple candies and empty wrappers remained. Our Christmas party in December was really something special. Not only did we receive the blessing of fellowship with one another, but we were also able to bless others. This year, we put our own DYG spin on the Big Table holiday blitz. We've been faithful customers of a delivery pizza chain in the area since the summer, and we felt it would be really special to show our deep appreciation for the service we always receive. I asked our delivery guy to help me carry all the pizzas in, and after he set the pizzas on our table, each of the youth blessed him with a small tip, accumulating to a huge blessing for the young man. The smile on the faces of the youth were incredible, and the teary eyed smile and astonished look of our delivery man was priceless. He was very appreciative and couldn't believe what had just happened. On his way out the door, he complimented the group

saying, "Wow, what a generous group of kids. That was really neat, and really helps me out this time of year." Those



are the moments that make this so special for me. Moments when you can just feel the presence of the love of God shining through those amazing kids. We enjoyed our meal around a set table, because there's just something so special about roundtable fellowship. A white elephant gift exchange, ugly sweater contest, and decorating gingerbread houses wrapped up our night together.

What an incredible year for the youth. It's been such a fulfilling privilege to share in the memories and

growth with each of them. It's been a specifically big year for some of our seniors. Derek Sumey celebrated his Eagle Scout accomplishment with a beautiful ceremony and reception. Shay Hannigan-Luther had an extremely successful senior soccer season as a leading scorer, was a Rotary student of the month, and also received the Distinguished Student Award for North Idaho near the end of the year. Meredith Johnson continues to bless us all with her amazing musical talents while earning her spot on the Lakeland High School honor roll. I can't believe all of the amazing talents of the youth here at 1st Pres. Our youth are smart, musical, creative, theatrical, athletic, and so much more, but most importantly, excited and on fire for God.

Working with this group of kids is truly special. This past year has been spent building great relationships and a solid foundation to transform the ministry in 2015 and give it a new flavor. Big things are in store for this ministry, and God's got some big plans for these kids who continue to seek Him and follow Jesus... without borders.



Many blessings,

**Kierstie Shellman**  
Youth Leader





Some of the children from Niños con Valor in Bolivia

## From Your Missions Team

Your Missions Team strives to carry out our role as a missional church. Our vision of missions is that of a three-legged stool, in which each leg is equal and important - compassion, evangelism and justice. We support our mission partners through your giving, and seek to communicate their needs to you. We also support individual congregation members who participate in mission trips and we organize annual events, such as the “Turkey Fund” and “The Fair Trade Festival & Missions Celebration.”

Our goal is to increase the percentage of congregational giving dedicated annually to missions to 10%. In 2011 the percentage of giving dedicated to missions was around 6%. In 2013 we dedicated 7.78% (\$26,000) of congregational giving (based on 2012 figures) to missions. In 2014 we dedicated 8.5% (\$34,200) of congregational giving (based on 2013 figures) to missions. Please see the side box to the right for specific donation amounts to our fourteen mission partners.

At the leadership retreat in January, we identified three main goals for 2014: 1) Integrate our mission partner information on the church website, 2) Deepen our understanding of mission partnership and, 3) Nurture a Global Mission Partnership with Niños con Valor.

During 2014 we allocated one-time support to members of our congregation who participated in mission trips: Kierstie Shellman (Guatemala), Steve Bell (Mexico), Kari Smith (Guatemala) and Joan Hust (Brazil). Joan’s financial support was allocated to her in 2012 for a different trip, which did not occur. In August, Kari and Kierstie gave a presentation on their mission trips to Guatemala.

### Some of our 2014 tasks included:

- Monthly team meetings
- Allocating mission funds to our 14 mission partners

quarterly/monthly with helpful assistance of Erica Waterman

- Adopting one or two of our mission partners each month, in order to stay connected with their changing situations and prayer needs
- Updating our Bulletin Board
- Coordinating (with the help of Becky Clegg) the system of sharing the name of one of our mission partners on the sanctuary screens during the offertory as a way of drawing attention to the work of our partners and demonstrating what a portion of congregational giving supports
- Coordinating the “Supporting our Mission with Prayer and Action” sections of the bulletin and e-newsletter with Becky Clegg -to give partner updates and highlight changing prayer needs
- Updating our Missions brochure with the help of Steven Balas
- Maintaining the Collection Tubs
- Educating our congregation on the work of our mission partners through a new Missions section on our church website (with Steven Balas)
- Deepening our understanding of mission partnership through an interactive bulletin board and team discussions
- Organizing “Minute for Missions” updates during worship throughout the year (Community Action Partnership, Union Gospel Mission, Paul Assignon (Togo) and Juliet Stuck (transitioning from Thailand to South Africa))
- Organizing a Fresh Start Donation Drive
- Hosting visits from Emily Branch (Youth Missions International)
- Hosting a visit from our partner in Togo, Paul Assignon, in March including a Mission Team House Party, a Minute for Missions, and a Sunday

- morning presentation
- Hosting a visit from our partners, the Stuck Family, in May during their transition from Thailand to South Africa, including Minute for Missions and a House Party
- Coordinating and funding a “Vision Team” mission trip to NCV in May to further nurture our relationship with NCV and investigate possibilities of a congregational mission trip in 2015 (Emily Thompson and Tim Lowry)
- Hosting a visit by the Director of our mission partner, Niños con Valor, Tyson Malo (October 4-5)
- Coordinating a “Global Missions Sunday” on Oct. 5th during Tyson Malo’s visit. This featured an informational bulletin insert highlighting the work of all of our Global Partners; flag decorations in sanctuary, café and gym; a message/sermon by Tyson Malo; and announcing a congregational mission trip to Niños con Valor in 2015
- Coordinating the NCV 2015 Mission Trip - informational meeting, application process, planning fundraisers and regular team meetings
- Hosting an October Family Promise training and potluck
- Organizing a Lunch and Tour with partner, Union Gospel Mission, Center for Women and Children (November 18)
- Distributing 57 \$50 Grocery Gift Cards through donations to the Turkey Fund

- Providing an opportunity for 15 organizations to raise awareness and funds at the annual Fair Trade Festival & Missions Celebration on December 8
- Involving the congregation in allocating \$1,556 of mission funds through a token voting system at the Festival.

*Kris Hannigan-Luther*  
Missions Team Chair

Our Mission Partners	2014 Gift
Family Promise	\$2,400
Glory Be Preschool Scholarship Assistance	2,400
Coeur d’Alene Homes	2,400
Juvenile Justice Outreach	2,400
Union Gospel Mission Center for Women and Children	1,200
Presbytery of the Inland NW	4,000
Campus Crusades for Christ - Bryon and Samantha Sharenberg	1,000
International Teams, Stuck Family Transitioning from Thailand to South Africa	2,400
MBBE of America, Inc., Africa	1,200
Bless China International, Rob Cheeley	2,400
Niños Con Valor, Bolivia	2,400
Staff of Hope	2,000
Fresh Start	2,000
Community Action Partnership	1,200
Short-term mission trips by members of our congregation	1,600
Congregational mission trip	1,400
New Partner/Special Need	1,800



**Clockwise from top:** Gordy Hannigan-Luther & Tyson Malo from Niños con Valor; filling passports at the Fair Trade Festival; shopping at same; Pastor Craig & Paul Assignon of MBBE of America; Tim Lowry & Emily Thompson in Bolivia.



# From Your Welcome Team



**O**ur WELCOME TEAM mission is to show the love of Christ to all who enter this sanctuary. We hope to show God's love through the gifts of hospitality and faith and to help each person discover their place in the Body of Christ.

Romans 12:13

teaches us that Christian hospitality focuses on the needs of the guests. And such a beautiful journey we have had this past year, practicing hospitality in an active and much appreciated way to show that we care. Pastor Craig led us through a meaningful sermon series equipping each and every one of us to share hospitality with those members and visitors in our church as well as in our community.

Each new visitor receives a gift bag (church coffee mug, information about the church and its programs and candy) delivered by our angels, Jim Douglas and Teresa Brown-Douglas. The Schwandt's ChristCare Group kindly assembles these bags for us. The WELCOME TEAM follows up with phone calls of kindness and caring.

We celebrate our visitors three times a year with Newcomers' Receptions, including newcomers as well as church leaders. These events have been hosted at Seasons Grill as well as Parkside Tower putting green.



These have proven to be valuable opportunities for us to show hospitality and love. This past year, we have welcomed approximately 447 visitors through our doors. Praise God!

As our church has grown and as we have nurtured visitors and new members alike, we were blessed with a new, inviting Welcome Center in our Soul Café in the Hunter Building. If our Sunday folks want more than coffee between services, they meet in

Sojourn (our gymnasium) for donuts and treats. We invite you to join us serving the Lord as we continue to create a welcoming atmosphere for everyone who enters our doors, help everyone feel valued, secure, and accepted, and introduce new folks to the love of Jesus.

We joyfully work with Membership and Community Outreach Teams; our staff liaison is the quintessential Steve Balas; and our extraordinary members include: Linda Jones, Jim Douglas, Teresa Brown-Douglas, Glen and Barbara Armstrong, Kay Mills, Rob and Constance Felten, John Schwandt, Dave and Jo Teater, Nate and Suzy Jolley (chair). Becky Clegg is our stellar advisor on all things. Praise God for your servant hearts.

**Photos, Top Right:** Newcomer reception on the patio at Parkside Tower. **Bottom:** The receptions at Seasons were always very popular and fun events.

*Suzy Jolley*  
Welcome Team Chair



# From Your Membership Team



**T**he purpose of the Membership Team is to assist the congregation in its desire to demonstrate the love of Christ by welcoming all that grace our doors and by inviting and encouraging them to become active, contributing members of the church family.

We organized several sets of membership classes over the past year. The classes are taught by Pastor and cover the history of the church and information about our local and global goals. New members are encouraged to make a commitment to become involved. When the classes are completed, those who wish to become members are recommended to Session for acceptance and are presented to the congregation.

This year our biggest event was compiling our Church Directory. Our Director of Communications and Outreach, Steve Balas, retained LifeTouch for our photo shoots. This event will take place again in about two years.

We are also responsible for the Membership Rolls. Our committee worked in collaboration with the office staff to provide names to recommend to Session

for removal from the church active rolls. Usually this removal is due to death, relocations to another city or state, a letter of transfer request, or just a request of removal.

We also assist the Welcome Committee when needed and attend their welcome receptions to help meet and greet the new visitors.

Your Membership Team,  
Linda Jones (Chair), Katie Saylor, Linda Bakes, Becky Shellman, Sally Bohn, Margie McCoy, Steve Balas, and Jana Robnett



**Above:** Pastor Craig jokes with the membership class. **Left:** new members, the Eversons, are presented to the congregation.

# From Your Technology Team

2014 was a very successful year. The Tech Team finished a majority of its upgrades with a new computer and a digital sound board for the balcony. The new digital sound board offers a lot of great features. The biggest benefit is the ability to save all of our settings, allowing us to switch from one memory setting to another. This helps when we have different services on Sunday or during the week. An example would be when we have a Cantata at 9am, a service at 11am and then another Cantata performance at 4pm. We just push a button and all the settings automatically go back to the prior memory setting. We were also able to upgrade some of our handheld mics and mic cords. Trying to upgrade everything is very time consuming and expensive but we are getting closer every day.

Unfortunately this year some of our members had to step away from helping on Sunday mornings and special services so we have struggled to keep the

tech booth staffed on Sunday mornings. Members that stepped down are Ken Clegg, Dale Mason-Wargo, and Bobby Marlette. On a positive note we were able to hire Joe Lee as the 11am service tech leader, and he is doing a great job! I would like to make one special acknowledgement to Charlie Branch. He has gone above and beyond in service to the Tech Team this year volunteering for both services on Sunday and helping out anywhere he can. We are very thankful to have him on our team.

As we look forward to 2015 there will be some minor upgrades which will include new handheld mics and cords, two new wireless mics, a new wireless belt pack, and some new instrument cables. If you have any questions regarding the team or are interested in joining, please contact Dan Brown.

Thanks,

*David Johnson*  
Tech Lead



David at the controls of the new digital sound board. **Inset:** from the left, Charlie Branch; David; Shay Hannigan-Luther; Caleb Thompson. **Right:** Joe Lee



# From Your Worship Design Team

**W**orship Design Team meets in the Conference Room on the first Tuesday of the month from 4:00pm to 5:30pm.

The committee assists Pastor Craig in coordinating for his sermons a few months in advance. The team also provides feedback on the current sermon series. They brainstorm ideas for visuals to enhance the messages and titles for each series. For example, the Time Machine was used during the series on "The Bible." We were going back in time to learn where the information in the Bible came from. We had many Bibles on display and



**Photos, Top Right:** Doctor Time shows Pastor how to operate the time machine. **Bottom:** Christmas Eve Candlelight Service.

encouraged the congregation to take a Bible if they needed one. When the sermon series was on "Hospitality" we used a display of pineapples in the Sanctuary. The pineapples were given to newcomers to welcome them.

Anyone can submit ideas for a sermon series by contacting one of the committee members. Also questions may be submitted to committee members. The committee members are as follows Nancy Downing, Karen Huber, Jackie Velez, Pastor Craig Sumey, Judy Flieger, Becca Memmer, Steve Balas, David Johnson, Erica Waterman, Paula Anderson, Lou Pennebaker, and Marlan Johnson.

Respectfully submitted,

*Jackie Velez*,  
Team leader

# From Your Small Groups Ministry

Who are actively involved in the church's small groups ministry are doubly thankful that we have Pastor Craig Sumey's full support of the program. Not only does he believe that small groups play a critical role at First Presbyterian, but he and his wife, Lynn, are active leaders of more than one of these groups. It's good to have the church's top leaders with us! So, you too, Mr. or Ms. Reader, come join us. If you are not yet a member of a small group at First Pres, get in touch with us and we will hook you up with a group tailored to your liking. They come in all shapes and sizes: married, single, working age, retired age, meeting during daylight hours, meeting during the evening hours, etc.

So, what is our excitement here all about? Small Christian groups have played an important role in the church since soon after Jesus' time on earth. His followers were under attack by the Romans occupying the Holy Land in those times. So they went "underground", holding secret worship, study, and fellowship meetings in small, more easily hidden groups.

Today we have a different mission than those original groups of long ago. We augment the church's regular Sunday worship services where, due to the large attendance, opportunities for individual expression and participation are limited. Not so in one of our small groups. These are usually limited in size to about 12-14 folks so that each and every participant will feel confident to speak up at meetings and play a truly active part in all of that group's activities. Isn't that what we all want from our church experience? Aren't we looking both for the larger setting where we can learn from the pastor's sermons and also listen to wonderful music, and also the smaller setting in a group where we can speak up, laugh, pray, study, make new friends, and help them when they have crises in their lives (such as loss of a loved one or loss of a job)? The two together, attending worship service as well as small

group meetings, provide the ideal combination.

While each of First Pres's several small groups has its own personality and emphasizes its own selection of activities, they all follow a common meeting format, incorporating four essential elements:

**(1) Prayer & Worship** – The ultimate goal in all of the small groups is to worship God through Jesus Christ. Therefore each group brings its own form of



**Above:** The Keefer & Jolley ChristCare groups and their delicious breakfast ministry.

prayer to its meetings. Some groups go around the table, with each participant offering a short prayer. In other groups, the leadership does the praying. In yet other groups, musical talent is employed with singing, accompanied by piano or guitar.

**(2) Community Building** – This portion of each meeting is set aside for all present to get to know each other better... fellowship. The leadership might introduce a topic of discussion that will help lead into the Christian study for that meeting. Or members might tell of personal interests, hobbies, home towns, and childhoods. Birthdays are often celebrated with cake, cookies, and punch. New members are almost instantly no longer strangers to the group.

**(3) Christian Study** – The form that this takes is strictly up to the leaders and members of each individual group. Some groups jump right into in-depth Bible study, perhaps using a "commentary", or readings in which a recognized Biblical scholar comments on the specific Bible content then being studied by the group. Some groups study other Christian media such

as Christian books and video tapes. One cannot help but learn more about Jesus, His ministry, and His teachings in this small group environment.

**(4) Mission** – If a group stays totally to itself, it can become "insular", or too inner-focused. The mission element pushes the group out into the church at large, with the group offering some important service to the larger body. An example is those tasty ChristCare breakfasts in the gym. Or going out into the local community, or the world at large, in an effort to offer the little bits of help that a small group can provide to those who are less fortunate than ourselves. Here an example might be providing labor or small in kind or cash contributions to a local charity or perhaps purchasing Bibles printed in Mandarin to be sent to new Christians in China.

We take special pride this year in nine newly trained small group leaders, who completed their three-evening training course in August. Each is now qualified to lead a small group at First Pres. Some are already "off and running" in setting up their new groups or helping out at existing groups.

The full list of new leaders is: Connie Boni, Charlie Branch, Ginny DeLong, Laura Koepke, Howard Martinson, Rich Morrow, Emily Rogers, Betty Stone, and Gil Walker. When you see them, please pass on your congratulations. You might also ask them about joining a small group, if you are not yet a member.

In addition to the church's Bible study groups, many of which have fallen under the title "ChristCare" groups in the past, a partial roster of the church's other small groups is the following:

**Food, Fun, and Fellowship** – these are social groups of about eight individuals, both couples and singles. All ages are welcome. These groups usually meet about four times over a four month period and are organized "a-fresh" each fall. Contact Bev Moss to learn more about these "3 F's" groups.

**Chancel Choir** – Practice is held each Thursday at 7pm. The choir sings at Sunday worship services from September – May. If you might like to look into joining the choir, contact its director, Judy Flieger.

**Men's Thursday Lunch Group** – All men are welcome to attend at a downtown restaurant at

noon on Thursdays from September – May. You will purchase your own lunch and be part of the study of a Christian book selected by the group's members. Pastor Craig Sumey directs this group of "somewhat" more senior men.

**Men's Saturday Morning Breakfast Group** – Younger guys, come have a meal at 7am at a downtown bakery with Pastor Craig directing the group and leading the discussion of a Christian book being read by the entire group.

**Women's Circles** – The church has four active circles which meet on the first Tuesday of each month in member's homes, and then all four circles meet together on the third Tuesday. The groups are committed

**Come and be part of one of these rewarding and enjoyable programs at First Pres!**

to building member's Christian faith through prayer and Bible study, to support the mission of the church worldwide, to work for justice and peace, and to build an inclusive, caring community of women who strengthen the Presbyterian Church (USA) and witness to the promise of God's Kingdom. All ladies are welcome to join. Program leaders to contact are Laura Coffman or Teresa Brown-Douglas.

**Knitting & Prayer Shawls** – This enjoyable group meets together to create prayer shawls for members of the church, and others, who are in need of prayers, be it for illness or loss. Come learn to knit and enjoy coffee or tea together, while helping others. Contact Betty Cheeley

Want to start your own small group? How about a group devoted to biking, or hiking, or cooking, or going to movies or plays, on and on, the possibilities are endless. If interested, contact us right away. We will get you trained as a leader and then help you recruit and organize your new group. What a great way for you to gather folks together to enjoy some common interest and to worship the Lord as well, all in a Christian setting.

Want to join (or form) a First Pres small group? Just give us a call at home (765-1437) or track us down at church.

Submitted by,

**Bill & Carol McCarty**

Coordinators / "Equippers" of  
First Presbyterian's Small Group Ministry

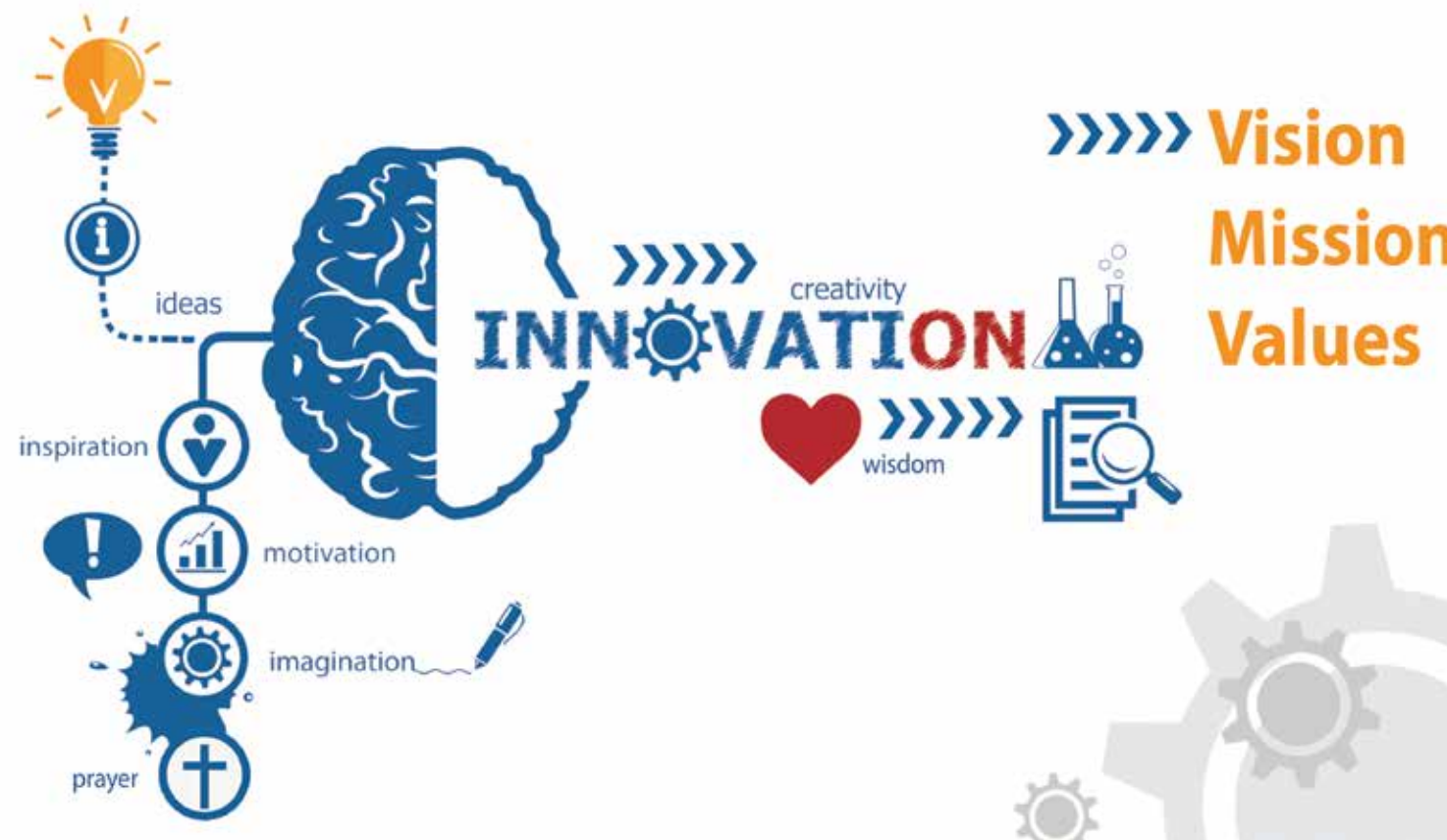
# From Your Dream Team

The Dream Team first met as a group on Aug 27, 2014. We are a group of 12 lay people, and Pastor Sumey with support from Administrative Assistant Becky Clegg, the membership and staff, who will steer and oversee the participatory vision discernment process. We are accountable to the Session. We meet monthly as a group to share findings from work completed outside of meeting times and also to listen to presentations concerning the historical context, present standing, and future needs of the church. Our members are: Rob Buckham, Betty Cheeley, Dustin Cook, Ginny DeLong, Sarah Holcomb, Nate Jolley, Deirdre Lawrence, Tim Lowry, Charlie Nipp, Nichole Piekarski, George Sayler, and Bill Welsh. We are stakeholders, leaders, members, attenders and newcomers of all ages, both men and women.

We have been tasked to engage the congregation in developing clear concise vision, mission and core values statements. To compliment these statements we will develop a five-year road map of how we will fulfill the vision, mission and core values statements. Finally, we will develop a “new look” that visually represents all of these concepts.

Our guiding principles are to conduct a vision process which is open, transparent and inclusive using a contextual methodology. We will seek expertise, counsel, wisdom and insights from the community as well as the church. We will engage the church leadership. The Dream Team reports to the Session each month.

In September, we were introduced and commis-



sioned during both the 9am and 11am services. We met at the little red church on the campus of North Idaho College to hear about the history of Coeur d’Alene and the contribution of First Presbyterian Church. Local historian, Bob Singletary, presented a slide show with

narrative about the development of a community on the banks of Lake Coeur d’Alene. We learned about the importance of Native American communities, the military, and the railroad in developing a community where we currently live. Specifically, we heard about the role of First Pres during amazing population booms. We also heard from Coeur d’Alene and Downtown leaders at an open forum on September 28. The congregation learned about key trends, opportunities and challenges facing our community right now, and we also heard about ways that a downtown church like ours can make a difference or fill a need.

In October, we heard presentations from David Teater and Jerry Gee about findings of building and property needs, Jon Hippler about financial assessment and Personnel Team about future staff plans. We hosted another open forum for the congregation in

**We have been tasked to engage the congregation in developing clear concise vision, mission and core values statements.**

October. This time we heard from the grass roots folks living, working, and serving in the downtown area. We overwhelmingly heard the need for our church to remain welcoming and to be inviting and loving to the people of our community.

In November, our guest speaker was Terry McGonigal, Director of Church Engagement at Whitworth University. We were excited to hear about an opportunity to partner with Whitworth in the Ekklesia Project to assist First Pres in developing a plan for the next five years then to build the capacity to implement the plan. In essence, Ekklesia would like to help First Pres discover what we would like to do and then make it happen and sustain it. At the same meeting, we learned about Missional Theology and the Church in a Changing World. In November, our open forum was led by Dr. Robert Buckham, presenting Natural Church Development survey results and what they mean.

In December, our meeting was reflective and summarized the activities of the fall. We have been very busy. Outside of the formal meetings discussed above, the members of the Dream Team have been reading and studying about qualities of healthy churches, reactivating missional churches, leading change within organizations, creating worship gatherings that are appealing to all generations, and reflecting on Jesus

moments when God is present on Earth, sometimes in the most unexpected ways. Each month, we bring what we’ve learned to our meeting and share through presentation and discussion with our teammates.

In the coming months, the Dream Team will begin to develop a plan for the future using the information we’ve been gathering this fall. We are working hard to listen to understand the context of our church. We are discovering what is going on inside our church and



One of the panels hosted by the Dream Team.

outside our church in the downtown community by seeking expertise, counsel, wisdom and insights from the community and the church. We’ve been open, transparent and inclusive with the congregation and accountable to the Session. Soon we’ll be making an intentional plan to be part of the community in a meaningful way for the future.

**Nichole Piekarski**  
On behalf of the Dream Team

# From Your **Community Outreach Team**



This was something of a break-out year for the Community Outreach Team. We hosted several very successful events and even experimented with going door to door in the neighborhood to invite folks to our Back to School Block Party. We are very excited about all our success and are looking forward with much anticipation to building on it in 2015. We know we have a long way to go and we have some big ideas on how to get there!

The purpose of the Outreach Team is to take the wonderful warmth, love, and sense of community that exists inside our church, on out into the community. We want to reach out to people with the love of Christ and invite them to come “home” to First Pres with us. In 2014 we hosted several events that we thought would give us a chance to do just that.

The Ironman cheering section - and free, homemade

treats - was another big success this year, and kicked off our year with a bang. We even got our picture in the paper! Then over the summer we held a series of Parking Lot Paloozas. These events were tied in with the Wednesday Farmer’s Markets that take place right next to our church. We provided games, a bounce house, face painting, and cold refreshments – and it was all free! These were fun, well attended events. Next came our Back to School Block Party, which was a big potluck and hot dog roast out in the gravel lot. We had more face painting, a giant bounce castle and invited the entire neighborhood. Finally, our most successful event was the Trunk-or-Treat event we put together for Halloween. This was a huge success with hundred and hundreds of community members participating.



But the secret ingredient in all this success was you. You volunteered, showed up, contributed, and participated for all these events and made them HAPPEN! Thank you First Pres for being a wonderful, committed, caring church. We look forward to working with you in 2015 as we share the love of Christ with our community!

Much Love,

Your Community Outreach Team



**Clockwise from top left of spread:** Cheering on the racers at Ironman; Parking Lot Palooza - featuring free fun & games; the jump castle at the Block Party, the dessert table at the Block Party; everyone in costume for Trunk-or-Treat.

## From Your Personnel Team

The personnel team has met every third Tuesday of the month throughout the year. The members of the personnel team are: Warren Bakes, Donna Schwandt, Bev Moss, Eric Fehr, Bob Guenther, Steve Peterson and Judy Kirking.



Above: Your amazing First Pres staff.

The personnel committee works in conjunction with other committees: Stewardship and Finance, Buildings and Grounds, Youth Ministry, Children and Family Ministries, and Glory Be School. The committee appreciates the dedication and input from these ministries.

Changes in our staffing positions:

A search team was formed to find a full time Director of Children and Family Ministries. In July, Lou Pennebaker was hired to fill the role. Lou moved to Coeur d' Alene from Las Vegas and is a great addition to our ministry staff. We thank Jane Penney for her dedicated work as our interim Children and Family Director for the past year.

Cynthia Marlette, Organist/Accompanist, resigned her position in August. Cynthia served our congregation for over 17 years. Ann Krugel and Kim Cheeley both

have served as interim accompanists as we search for a new person to be our Organist/Accompanist/Praise Team Leader. The job description has been revised, a search committee has been formed and is actively searching for the right person to fill this role.

Kendra Johnson, Youth Director, resigned her position at the end of May and Kierstie Shellman has been hired to fill the Youth Leader position. Kierstie is a student at Whitworth University.

We have job descriptions for most of the staff positions and Pastor Sumey has met with all of the staff to conduct annual staff reviews and reported the results to the team. The team was involved in developing recommendations for staff salaries for the coming year. We provided the finance team with a spreadsheet

of positions and recommended salaries for 2015. We also work on various human resource issues.

Our church has hard-working staff members. Their dedication and enthusiasm are appreciated by the Personnel Team and the Session. They all are to be commended for their work.

In 2015, we anticipate continuing to meet the needs of our growing church by hiring a person to fill our Music worship position of Organist/Accompanist/Praise Team Leader, increase the Communication and Community Outreach position to full time; and by mid-year expand our youth leader positions by 10 more hours a week, and adding a part time receptionist. We look forward to these exciting changes.

*Donna Schwandt,*  
Outgoing Personnel Chair



## From Your Building & Grounds Team

2014 has been less busy than 2013, but very satisfying for Building and Grounds. In addition to the normal cleanings, supplies, and routine maintenance, some good work was accomplished around the building campus at First Presbyterian Church of Coeur d'Alene.

The bathrooms in the basement and the main bathrooms across from the Fireside Room were painted. We also received a commitment from the folks of AA to paint the bathrooms in the basement below the Sanctuary – though that has not yet been completed.

Flowers were again planted in the front flower beds including some perennials. This will provide longer term coverage and continue to be beautiful year after year. The water system for those beds was reworked a bit and left in good shape at the end of the growing season. Old shrubbery and two large trees were removed from the west side flower beds and new shrubs and small trees were planted. Weed block and red lava rock were placed in the beds; a very nice improvement to the building appearance.

The cubby hole at the top of the front stairs to the Sanctuary was opened to view. A section of the brick wall was removed. A new lattice section was built in its place allowing for less cover. Hopefully, this will reduce or eliminate the use of this space by vagrants.

Furnace and HVAC repairs were completed in the Hunter Building and in the Sanctuary. A leak along the vents of the HVAC in the Sanctuary led to damage to the ceiling which has been repaired by Unlimited Drywall with no charge to the church.

Work was also completed for Glory Be. A dutch type door was placed in the nursery. A gate was installed to the fence on the east side of the Hunter Building. The fence area of the playground was expanded. New sand

was added to the sand box. New gravel was added to the “kitchen” area. There is still much to be completed for their project list.

Hobart finally reached the end of a useful life. Fortunately, with the significant efforts of Becky Clegg and Gene Waterman, a new-to-First Pres dishwasher was found and installed very quickly. This new Hobart is an improved, faster version dishwasher which is already making cleanup in the kitchen an easier service to the congregation.

This year B&G completed a new budget planning process. This is an Excel workbook which enables planning for each room and piece of equipment in the church building campus. The plan allows for budgeting for each subsequent year and also for long-range planning. This planning includes coverage for normal maintenance work in addition to planning for future big ticket items. The planning tool has been implemented into the 2015 budget. This idea came to us through the efforts of John McRae and we extend to him our thanks.



Continually in His Service,

*Peter Van Sickle*  
Building & Grounds Chairman

# Glory Be Learning Center

## Early Education Matters



What a blessing it is to watch young children and their families being touched by the grace of God. Over this last year we had over 50 families in our program. We completed the first phase of the Idaho STAR rating system program (QRIS) and became an Idaho STAR rated program. We

earned five out of five stars for our environment, group size and ratios. We also averaged four stars for education, professional development, inclusion, strengthening families and business practices. We participated in the Let's Move program through Panhandle Health and will continue with more QRIS training this coming year.

We received grants from the Idaho Community Foundation, Kiwanis, the Women's Alliance and First Presbyterian Church. In addition we had many donations through our fundraisers, the "yard fund," Scholastic book sales and private donors. With all these funds we were able to touch the lives of many families involved in the Family Promise program as well as other families in the community that just needed a little extra help.

With these grants, fundraisers and the help of dedicated First Presbyterian members and staff we were able to accomplish many improvements again this year. We improved the fall zones in the playground, installed more privacy fencing, added equipment to

our classrooms and improved our garden area. We also have our loft project underway thanks to a generous gift from anonymous donors.

Over this last year the children and their families participated in several activities. We hosted a grandparent's tea party, Stone Soup lunch, Thanksgiving lunch, the Christmas story and gingerbread house making event, holiday parties, Parent's Night Out events and our Graduation/Spring program play. We



were able to take field trips to two different area farms. Susan Nipp came by to read to the children, to share with them what an author does, and to teach them more about our community. They also continued our Missions' outreach by corresponding with the children at Niños con Valor in Bolivia with crafts and letters.



As we look forward to our next projects (lofts in the classrooms, removal of a wall and a small bathroom in the preschool classroom) we feel confident that the Lord will continue to bless us with the talents and support of our community to make these improvements possible.

We praise the Lord for the work He has done in the Center helping us to reach our goals. As we move forward we are excited to see more positive changes, adventures and a school that is supported by a community of believers filled with love and laughter.

*Susie Frelich*  
Glory Be Director

# Family Promise of North Idaho at FPC

Family Promise of North Idaho is a national organization that came to North Idaho 7 ½ years ago. Our congregation was one of the first churches to support Family Promise of North Idaho (FPNI) and it continues to be an important mission of our church.

FPNI serves homeless families with children and empowers them to achieve sustainable housing. The organization relies on a network of congregations to fulfill the need for lodging and meals for our guest families. The network is a coalition of church partners representing a diverse community of faith. There are currently 18 churches involved in North Idaho.

Our church serves as a host congregation several times throughout the calendar year. Homeless families that have been screened and accepted into the program stay at our church each evening and overnight for one week at a time. We provide dinner and the guests stay overnight in our Sunday School rooms. A light breakfast is served and the guests leave our church for the day to receive guidance in finances and assistance in securing suitable employment and housing at the FPNI Day Center.

Our church hosted five times during 2014. In a typical week of hosting, 40-50 individuals from our church helped with evening hosting, overnight hosting, providing food and supplies, doing laundry, and assisting in set-up and take down. Those that

have been involved will share heart-warming stories of experiences, conversations, and the joy of being a part of such a worthwhile mission right here in CDA!

During 2015 we will once again host five separate weeks at First Presbyterian Church. We are pleased to have new coordinators stepping up to organize our church volunteers. Please contact Jack & Ginger Higen, Eric & Chris Fehr, or Laura Harris to become involved

**Below:** Getting ready for the families requires a team effort.



as a volunteer for our church. They will offer you lots of support and encourage you as you spend an evening, provide food, or support service to others that are experiencing difficult times in their life. Please seriously consider how you can be involved in FPNI in 2015. Just as it is stated in James 1:22

experience the joy of "being doers of the word, and not hearers only."

Serving Together in Christ,  
*Ron & Carolyn Keefer,*  
*Buzz & Judy Hays*





# From Your Stewardship Team

The stewardship team this past year saw a great interest in stewardship from the congregation as we increased our pledges and offerings in 2014. We worked toward creating an atmosphere of giving and thinking about stewardship and what responsibilities it brings as members of this church. The congregation enthusiastically embraced the giving of extra funds toward church improvement, with the remodel of the sanctuary and the areas of the Hunter building and all-purpose room (Soul Café and Sojourn). We worked toward increasing awareness of stewardship with bulletin boards to remind us of stewardship. We diligently worked to encourage good management and conservation of the Lord's work through the First Presbyterian Church in the area of downtown Coeur d'Alene.

Included in the offerings of stewardship to church and non-church members, we offered Planned Giving and Estate Planning Seminars led by Max Faller. These seminars were presented in September to encourage leaving a personal financial legacy to the church, either during a person's life or thereafter, which would enhance the church's ability to serve its members and the surrounding neighborhood which we serve too. Professional representatives of both private financial and public charitable organizations were brought in to share their expertise in the topics of planning for the future. Encouragement of the congregation to give at various stages of our lives was presented too. People can save for this just as they save for other family needs.

Our team held the annual Pledge Drive in October. The kick-off was aided by a free breakfast hosted by the Keefer/Jolley ChristCare teams. The congregation was encouraged to attend an event between services in the all-purpose room (gym). Explanations of where the money was spent last year, break down expenditures, and a vision for the future was presented. Attendees

were given pledge cards and asked to return them in two weeks. We also mailed them to all members with an explanatory letter of the pledge drive. After the pledges were received, the church staff put the figures together so that our crack team of experts could do a revenue projection based on the information from the pledge cards submitted to the church and then hand it to the Finance Committee to prepare the operating budget for 2015. Many thanks go to Don Campbell and Steve Mormon for preparing a budget.

Our theme this past pledge drive was "In God's Hands" and that is exactly where we place our trust, love, and hopefully money. God is doing wonderful things in our church and will continue to bless us if we trust in Him.

We will continue to highlight all of the activities that our congregation is involved with on bulletin boards, e-newsletters, and visual messages before and during the services. We want everyone to see what people are doing and maybe join in on the many projects or groups. Dorcella Hardesty worked hard on these boards with the help of our team. Many thanks go to her.

With everyone's hard work and pledges, we look forward to a great year. Remember that pledging is a part of God's work that we do through the church. It presents effects that are far reaching and spreads enthusiasm through the church and then the community in the downtown area and then the world.

Our committee consisted of: Warren Bakes, Ann Dare, Max Faller, Dorcella Hardesty, Bill McCarty, and Steve Peterson. Many thanks go to this great group of people.

Respectfully submitted by,

**Margie McCoy**  
Committee Chairperson

*Special Report:*

## Women's Retreat

It was a huge blessing for me to attend the 2014 1stPres Women's Retreat, joining 50 other women at Ross Point Camp this past October. I've attended retreats while a member of previous churches and this one was definitely my best experience yet.

The accommodations and food were excellent, making for a very comfortable and relaxing weekend away from home. The sessions were based on a video teaching by Staci Eldredge called "Becoming Myself." I learned about living in mercy, living in freedom from fear and worry, and living with peace and intentionality. It was awesome!

But by far the best thing about the retreat was having plenty of time to meet some great new friends. The planning team organized things so well: there was time for small group discussion, chatting, making crafts and hiking the beautiful camp property. There was something for everybody, of all ages and personalities.

I'm already excited for the next retreat - but I already have some great new connections every time I come to church and see my 2014 retreat friends!

*- Testimony of a Women's Retreat Participant*





## From Your Deacons

The 18 member Board of Deacons continued their ministry of compassionate service throughout 2014. The Deacons serve the congregation and community by:

- Praying for our congregation
- Donating \$300.00 each month to St. Vincent DePaul Help Center
- Visiting the approximately 22 members who cannot make it to church each month. Deacons are assigned a “shut-in” but, John and Maureen Mackesy visit each of the 22 during the month as a special mission. We deliver flowers to the shut-ins after Christmas, and Easter services when requested. The Deacons also provide small gifts and cards throughout the year.
- The “Sonshine” officer



of the Deacons sends out cards to those who need encouragement, are ill, have had surgery, or are grieving.

- Signing up to visit Presbyterians who are in our local hospital or rehabilitation facilities. Although any deacon can sign up, past deacons Gil Walker and Meda Scott make it a special mission to visit the hospital.
- Preparing communion for two services each month and for special services. And cleaning up communion between services. We communicate with the Worship Team to make sure we are setting up communion correctly.
- Ushering on the 5th Sunday when it comes up during the month.
- Maintaining a clothing storage space for the clothing give-away in August. This requires: picking up lost and found items from various schools; soliciting clothing from the congregation; buying clothing at yard sales; sorting, washing, drying, folding, and putting clothing away. For

**Top:** The Knitting for Warmth crew. **Center:** Your 2014 Deacons. **Left:** Cooking With Kids taught young folks great, simple recipes this summer. **Above Right:** Bill & Teri Burch collecting presents for the Deacons' Christmas Families drive.



half of the year we collaborated with Coeur d'Alene Homes Thrift Store. We gave vouchers for free clothing at the store during the Ecumenical Food Kitchen. For many valid reasons, it did not work out and the Deacons voted to focus on the clothing giveaway. We appreciate the staff at the Thrift Store for their collaborative efforts.

- Putting on a major Children's Clothing Give-away at the end of August. We have at least 150 families fill bags with children's clothes, coats, backpacks, shoes, and sundries to get ready to go back to school. Then, we clean-up and begin to restock for next year.



Providing supplies for and often hosting, the Maundy Thursday service.

- Coordinating the Christmas Family Project which includes: convening a committee to contact the downtown and midtown schools to get the names and contact numbers of families in need, interview families, create posters, inform the congregation, and pack up presents and deliver them. If we need to make purchases to fulfill the list, we do this through the generous donations from the congregation. We have often used Deacon funds to go beyond Christmas and help with needs the family may have.
- Providing rides to church, the doctor, the store, and wherever else is needed by homebound members.
- Getting meals to those who have been sick, injured, grieving, or become a new parent.
- Uplifting the spirits of the hardworking First Presbyterian staff by providing special treats or gifts each month.
- Knitting for Warmth: Body and Soul is an outreach program. Each Friday a knitting group makes prayer shawls for those who are going through chemo-therapy or other illness. Anyone can come and learn to knit, sit and talk, and create

something warm and beautiful. A small cross and scripture message is sewn onto the shawl. We have provided about 50 shawls to keep people warm: body and soul.

- Cooking with kids is another outreach program that was done during the summer.
- Providing professional clothes to North Idaho College's job fair from our clothing storage.
- Listening, praying, problem solving, discussing, visiting, helping, and trying our best to meet people's needs through love and discernment.

Through the generosity of donations from our congregation the first Sunday of each month, the Deacons also provided things to different people in need: gas cards, rent, Avista payments, tents, u-haul rental, motel rental, meals to Family Promise guests, yarn for Knitting for Warmth, bus tickets, storm assistance, help for the warming center, scrubs, school supplies, and providing emergency help when needed to Family Promise of North Idaho guests (not to exceed \$200 without a vote).

Because we do so much, we are grateful to our “adjunct” Deacons, members of the congregation who help with such tasks as hospital and home visits, washing and folding donated clothing, helping with the clothing giveaway, and helping with fifth Sunday ushering. We are blessed to have Becky Clegg, Gene Adkison, and Steve Balas, who help take pictures, refer those in need to us, protect our Christmas Family boxes, hang up banners, get things out, put things away, remind us of calendar dates, create posters, pluck out dry bread, and find hidden communion cups. We are thankful for Pastor Craig who inspires us.

We meet the second Tuesday of each month from 5:30p.m. to 7:00p.m. We enjoy snacks, devotions, committee reports, problem solving, and a chance to organize our work. We are looking forward to 2015 to see what new ideas come forward to continue our ministry of compassionate service. We are grateful for the many ways we become closer to God by serving His people.

In His Service,

*Teri Burch*  
Head Deacon



## From Your Adult Discipleship Team

At the beginning of the year, Pastor Craig Sumey came to our committee and said, and I paraphrase here: “I would like the focus of this committee to change this year. Rather than developing adult Sunday school classes, you are to do some research for me. I am seeking the best possible teaching series, be it in video format, written form, or otherwise, for the instruction of Christian principles to First Presbyterian’s newest members.”

He continued, “Take a couple of months now to go out locally, and perhaps even on your vacation or business travels across the U.S. or abroad, to interview leaders of other Protestant churches in an effort to find those Christian teaching series that each of your interviewees believes has been the most effective in helping to instruct his or her own church’s new members.

Then by late spring, come back with your interviewing results in hand, gather the actual materials that have been recommended to you by purchasing them online or otherwise, then review them all for quality together as a committee, and by autumn make your recommendations to me and to the Session.”

So, we made up a common questionnaire and set out “far and wide” to interview. For two months members of our committee conducted interviews here in Coeur d’Alene and out across the country to the East Coast and to the Southwest. One member even completed her interviews in New Zealand!

Then, per Pastor Craig’s instructions, we reassembled this summer and began reviewing the materials that had been recommended by our interviewees. Using that nice new big screen TV in the Fireside Room, we reviewed volumes of video series. On other occasions, we went over book based series together.

Then, in late September, we met with Pastor Craig and the Session and made our recommendations. Craig now has the recommended materials in hand.

He may decide to actually use them, or not. That is his choice, his decision.

Regardless, our committee covered a lot of ground (literally), interviewed some fascinating church leaders whom we otherwise most likely would never have met, and identified some strong Christian teaching series for Pastor Craig to consider in the process. A most enjoyable task.

Well done, committee! -- Betty Cheeley, Cliff Fallon, Leslie Miller, Travis Park, Jo Teater, Gil Walker, and Wendy Wilson.

Respectfully submitted by,

**Bill McCarty**  
Chair

## From Your Women’s Association

From the time that a Presbyterian Church in Coeur d’Alene was simply a dream, for a few there were women planning for a Women’s Circle. We have been an active presence in this church ever since.

However, although all women of our church are welcome in PWA, we realize that the scope of our church has changed. There are now opportunities for women to be actively involved in many different groups. The place of women in our community has changed as well. Many women are gainfully employed, making it impossible to take part in day-time meetings. It is also important for these women to spend quality family time with family activities, making it difficult to attend traditional evening meetings.

Nevertheless, although our group is not as large as it once was, it is very important to those still involved. We are truly like sisters and friends. We each meet in



**Above:** Everyone loves the Women’s Tea. **Center:** A special skit from the Mary Circle. **Bottom:** Preparing for the Rummage Sale.

one of four Circles on the first Tuesday of each month from September through May—and on the third Tuesday we meet in a Gathering of the Circles. On this day we have a specially planned program, as well as time for dessert and fellowship.

Each of us donates as we are able in our “Least Coin” (Internationally) and our “Birthday Offering” in the Spring and a “Thank Offering” in the Fall. Both of those are National PWA projects.

Still, our local PWA has a budget as well. As a group we support the Coeur d’Alene Homes, the Presbyterian Mission, our church kitchen, annual adult college scholarships, and miscellaneous expenses for a total of \$2,160 for the year. To make that possible, on top of our national and international commitments, we needed a Fundraiser. Our “Shop, Sup, and Song” event in November was an enjoyable success. Barring unforeseen events we are now ready for our year. Years follow years, seemingly seamlessly. However, our year goes from September to September.

Report submitted by,

**Laura Coffman &  
Teresa Brown-Douglas**  
Co-Moderators



# From Your CRE (Commissioned Ruling Elder)

As I look back on 2014 I cannot help but stop and take a moment to reflect on just what an amazing opportunity it has been to serve such a caring church community as your Commissioned Ruling Elder



Intern. Admittedly, when I began my internship I was a bit apprehensive as to how I was going to balance my new role but you all stepped right in and offered encouragement, feedback and support in ways that I never could have imagined.

Because of the flexibility that you offered me with my work hours, I was able to engage in several learning opportunities that I might otherwise have missed out on. I was able to work with Pastor Craig and Marlan Johnson in offering Wednesday prayer services during Lent, to have an opportunity to lead Worship and to preach in our beautiful sanctuary, to participate in Session and Team meetings to begin honing my leadership skills, and to work with some amazing writers to put together an Advent Devotional

**Top:** Erica shares a message. **Right:** Life is good when your boss is a teddy bear.



series. I worked with the Deacons to make home and hospital visits and with Yates Funeral Home



to learn how to celebrate the passing of loved ones onto Glory. I was blessed to collaborate with an amazing group of women to help plan the Fall Women's Retreat and they graciously invited me to lead worship services and to offer Communion (with the help of Nancy Goodwin from Community Presbyterian Church in Post Falls). Most notably, with your support I've been able to form a ministry relationship with the residents of Heritage Place that continues to be a blessing for both my daughters and me as we visit, worship, study the Bible, and embrace Christ with the Senior Saints living there.

Now, to answer the burning question that so many of you have asked, "What comes next?" The answer: waiting. Presently, my family and I are waiting, and praying for a call to a church where I can serve as a CRE. We are trusting that God has a plan for us (which probably includes a healthy dose of helping me to embrace the spiritual gift of patience) and that it will come to fruition in His time. Until then I am blessed to continue to serve in my role as Bookkeeper and Treasurer.

Thank you all for the critical role that you have played in teaching me how to serve the Church in a way that doesn't include any math. Each of you has been, and continue to be, a blessing to both my family and me.

God Bless,  
*Erica Waterman*

# Financials & Statistics

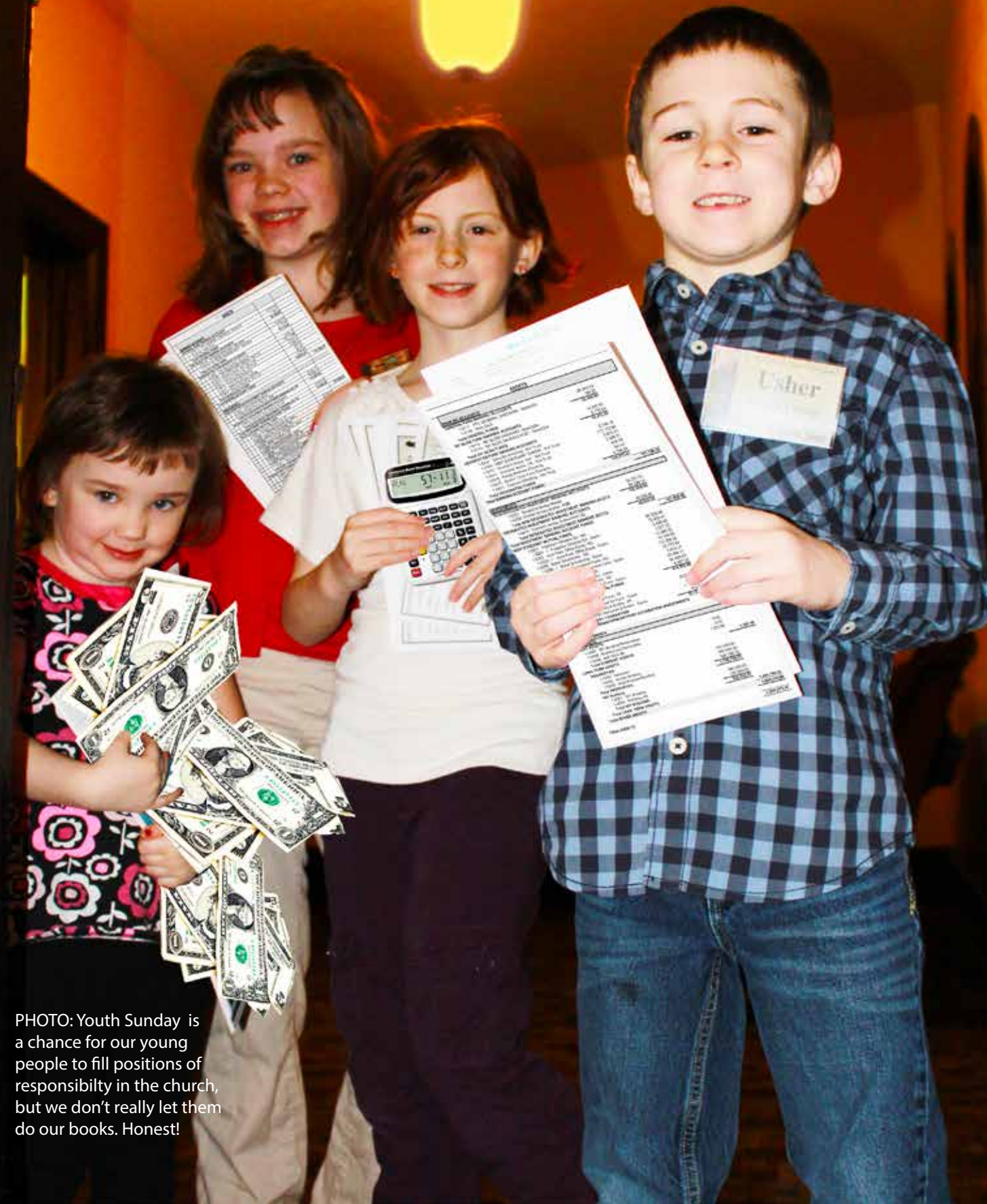


PHOTO: Youth Sunday is a chance for our young people to fill positions of responsibility in the church, but we don't really let them do our books. Honest!

## 2015 Approved Budget - Church Operations

INCOME		2015 Approved Budget
<b>Offering Income</b>		
4-0110 - Envelope Offering		\$ 429,214.11
4-0120 - Loose Offering		\$ 48,710.40
<b>Total OFFERING INCOME</b>		<b>\$ 477,924.51</b>
<b>Other Income</b>		
4-0170 - Per Capita		\$ 2,700.00
4-0150 - Interest Income		\$ 200.00
4-0160 - Building Use		\$ 4,800.00
4-0151 - 501 Income Transfer		\$ 12,000.00
4-0152 - Carryover profit from 2014		\$ 24,000.00
<b>Total OTHER INCOME</b>		<b>\$ 43,700.00</b>
<b>Total Income</b>		<b>\$ 521,624.51</b>
<b>EXPENSES</b>		
<b>PAYROLL &amp; BENEFITS</b>		
<b>PASTORAL COMPENSATION</b>		
5-0103 - Pastor Salary		\$ 51,200.00
5-0106 - Pastor Housing		\$ 20,500.00
5-0104 - Pastor SECA		\$ 5,998.00
5-0109 - Pastor Auto/Prof Expenses		\$ 4,000.00
5-0122 - Pastor Continuing Ed		\$ 1,500.00
5-0117 - Pastor Sec. 105 Medical Reimb.		\$ 5,000.00
5-0115 - Pastor Medical		\$ 19,208.12
5-0116 - Pastor Dental		\$ 1,700.00
5-0120 - Retirement Board of Pen.		\$ 8,624.06
5-0105 - Pastor Death/Disability		\$ 1,264.01
5-0121 - Pulpit Fill		\$ 1,800.00
<b>Total PASTORAL COMPENSATION</b>		<b>\$ 120,794.19</b>
<b>PROGRAM STAFF</b>		
5-0202 - Children and Families Director		\$ 37,440.00
5-0202-1 C&F Prof. Development		\$ 1,000.00
5-0211 - Director of Comm./Outreach		\$ 38,188.80
5-0203 - Music Director Wages		\$ 8,878.90
5-0206 - Organist/Pianist Wages		\$ 15,248.00
5-0209 - Organist Substitute Wages		\$ -
5-0201 - Youth Director Wages -		\$ 9,600.00
<b>Total PROGRAM STAFF</b>		<b>\$ 110,355.70</b>
<b>SUPPORT STAFF</b>		
5-0301 - Administrator Wages		\$ 37,440.00
5-0325 - Receptionist		\$ 5,980.00
5-0307 - Bookkeeper Wages		\$ 29,278.08
5-0310 - Custodian Wages		\$ 27,040.00
5-0303 - Employee Health Stipend		\$ 7,200.00
5-0312 - Nursery Supervisor Wages		\$ 3,536.00
5-0315 - Nursery Helpers Wages		\$ 3,900.00
5-0318 - Sound Tech Wages		\$ 2,600.00
5-0319 - Office Manager Fill		\$ 150.00
5-0320 - Custodian Fill		\$ 360.00
<b>Total SUPPORT STAFF</b>		<b>\$ 117,484.08</b>
<b>STAFF TAXES</b>		
5-0900 - FICA & Medicare / Employer		\$ 17,429.74
5-0903 - Workman's Comp / Employer		\$ 3,712.50
<b>Total STAFF TAXES</b>		<b>\$ 21,142.24</b>
<b>Total PAYROLL &amp; BENEFITS</b>		<b>\$ 369,776.21</b>

		2015 Approved Budget
<b>ADMINISTRATION</b>		
6-0101 - Office Supplies		\$ 6,500.00
6-0103 - Postage		\$ 2,500.00
6-0106 - Telephone		\$ 4,187.28
6-0112 - Copier - Maint & Operations		\$ 7,000.00
6-0115 - Communication/Advertising		\$ 5,875.00
6-0903 - Donuts		\$ 1,000.00
6-0119 - Per Capita Expense		\$ 11,026.00
6-0122 - Bank Service Charges		\$ 750.00
6-0123 - Security Checks		\$ 350.00
<b>Total ADMINISTRATION</b>		<b>\$ 39,188.28</b>
<b>FACILITIES</b>		
6-0201 - Insurance		\$ 10,235.26
6-0203 - Maintenance & Repairs		\$ 20,437.00
6-0204 - Snow Plowing		\$ 700.00
6-0202 - Parking		\$ 1,200.00
6-0206 - Organ and Piano Tuning		\$ 800.00
6-0208 - Property Taxes		\$ 40.00
6-0211 - Municipal Fees and Taxes		\$ 125.00
6-0230 - Security System Maintenance		\$ 432.00
6-0223 - 521 Lakeside Utilities		\$ 28,938.00
<b>Total FACILITIES</b>		<b>\$ 62,907.26</b>
<b>MINISTRY TEAMS</b>		
6-0900 - Adult Discipleship		\$ 500.00
6-0401 - Children & Families Ministry		\$ 4,500.00
6-0703 - Choir Music		\$ 2,150.00
6-0901 - ChristCare		\$ 1,000.00
6-0902 - Deacons		\$ 300.00
6-0802 - Finance Team		\$ 5,000.00
6-0907 - Guest Welcoming Team		\$ 1,700.00
6-0906 - Membership Team		\$ 900.00
6-0301 - Missions Team (9.5% 2015)		\$ 43,864.10
6-0821 - Personnel Committee		\$ 150.00
6-0801 - Stewardship		\$ 1,100.00
6-0851 - SanctuaryTechnology Team		\$ 4,300.00
6-0852 - Office Technology Team		\$ 3,200.00
6-0908 - Outreach		\$ 6,330.00
6-0710 - Worship Design		\$ 2,061.00
6-0601 - Youth Team		\$ 3,700.00
<b>Total MINISTRY TEAMS</b>		<b>\$ 80,755.10</b>
<b>Total EXPENSES</b>		<b>\$ 552,626.86</b>
<b>Net Total</b>		<b>\$ (31,002.35)</b>

### 2015 Approved Budget Properties

501 BUILDING INCOME		2015 Approved Budget
	8-0051 - 501 Lease Income	\$ 60,417.02
	8-0053 - 501 Envelope Offering	\$ 250.00
	8-0056 - 501 Interest Income	\$ -
	8-0062 - Parking Lot Income	\$ 8,400.00
<b>Total 501 BUILDING INCOME</b>		<b>\$ 69,067.02</b>
<b>501 BUILDING EXPENSES</b>		
	501 Loan Interest	\$ 3,214.18
	Property Taxes	\$ 11,380.96
	Property Repairs	\$ 500.00
	Municipal Fees and Taxes	\$ -
	501 Income Taxes	\$ 2,000.00
	501 Property Insurance	\$ 2,558.82
	Parking Lot Maint & Snow Removal	\$ -
	501 Lakeside Utilities	\$ 13,682.03
	501 Supplies	\$ -
<b>Total 501 BLDG EXPENSES</b>		<b>\$ 33,335.99</b>
OPERATING PROFIT		\$ 35,731.03
Principal Loan Payments		\$ 22,858.22
<b>Adjusted Net Income/Loss</b>		<b>\$ 12,872.81</b>

### 2015 Approved Budget Glory Be Learning Center

GLORY BE INCOME		Approved Budget
	Tuition	\$ 158,970.00
	Scholarship Tuition	\$ 3,000.00
	Reg. & Misc. Fees	\$ 3,000.00
	Undesignated Conts.	\$ -
	Church Funds	\$ -
	Fundraisers	\$ 1,300.00
		<b>\$ 166,270.00</b>
<b>GLORY BE EXPENSES</b>		
	Bad Debt Expense	\$ -
	Classroom Equipment	\$ 2,500.00
	Classroom Supplies	\$ 6,600.00
	Snacks	\$ 4,000.00
	Special Activities	\$ 500.00
	Playground Expenses	\$ 1,800.00
	Repairs/Maint.	\$ 100.00
	Advertising	\$ 100.00
	Office Supplies	\$ 300.00
	Telephone	\$ 960.00
	Licensing and Fees	\$ 200.00
	<b>Expenses Subtotal:</b>	<b>\$ 17,060.00</b>
<b>PAYROLL</b>		
	Director	\$ 26,592.54
	Teachers	\$ 100,283.07
	Cleaning	\$ 4,150.90
	Health Stipend	\$ 5,400.00
	Payroll Taxes	\$ 10,023.54
	Workers Comp	\$ 759.95
	Employee incentives	\$ 1,000.00
	Continuing Education	\$ 1,000.00
	<b>Payroll Subtotal:</b>	<b>\$ 149,210.00</b>
<b>TOTAL GLORY BE EXPENSES</b>		<b>\$ 166,270.00</b>
OPERATING PROFIT		\$ -

\*Please note: Glory Be School runs on a fiscal year from 09/01/2014 - 08/31/2015

**2014 Balance Sheet**

As of December 31, 2014

**ASSETS****BANKING ACCOUNTS****GENERAL FUND BANKING ACCOUNTS**

1-0111 - FPC GENERAL CHECKING - BankCDA 28,343.43

1-0118 - Petty Cash 106.22

**Total GENERAL FUNDS 28,449.65****501 BLDG FUND BANKING ACCOUNTS**

1-0112 - 501 BLDG CHECKING - BankCDA 14,242.05

1-0114 - 501 BLDG SAVINGS ACCT - BankCDA 2,170.84

**Total 501 BLDG FUNDS 16,412.89****DESIGNATED FUND BANKING ACCOUNTS**

1-0441 - Glory Be Checking - WA Trust 2,746.13

1-0193 - NEW SANCTUARY CHECKI - WA Trust 112,712.90

1-0412 - Women's Assoc. Sav - WA Trust 2,978.74

1-0411 - Womens' Assoc. CK - WA Trust 2,409.37

1-0418 - Family Promise Checking 838.72

1-0417 - Keefer Christ Care Checking 391.47

1-0431 - Deacons Checking - Wa Trust 4,796.28

**Total DESIGNATED FUNDS 126,873.61****Total BANKING ACCOUNT FUNDS: 171,736.15****INVESTMENTS****NON-DESIGNATED INVESTMENT BANKING ACCOUNTS**

1-0221 - BankCDA Money Market 54,221.51

1-0222 -Walden Money Market - PSB 88,588.14

**Total NON-DESIGNATED INVESTMENT BANKING ACCTS 142,809.65****DESIGNATED INVESTMENT BANKING ACCOUNTS**

1-0414 - Women's Assoc. Endowment CD 45,000.00

**Total DESIGNATED INVESTMENT BANKING ACCTS 45,000.00****Total INVESTMENT BANKING ACCOUNT FUNDS 187,809.65****NEW COVENANT MUTUAL FUNDS**

1-0201 - Folgelson Christian Ed - NC 80,000.00

1-0201 - I - Folgelson Christian Ed - Gains 72,403.41

1-0203 - June Ford- Office Equip - NC 5,500.00

1-0203 - I - June Ford- Office Equip - Gains 1,577.22

1-0206 - Baker Scholarship - NC 11,680.00

1-0206 - I - Baker Scholarship - Gains 10,144.05

1-0208 - Phippeny Endowment Fund - NC 114,209.36

1-0208 - I - Phippeny Endowment Fund - Gains 23,772.84

1-0209 - Finch Christian Ed - NC 5,819.27

1-0209 - I - Finch Christian Ed - Gains 25,384.21

1-0228 - Akins Scholarship Fund - NC 54,495.00

1-0228 - I - Akins Scholarship Fund - Gains 9,607.53

**Total NEW COVENANT MUTUAL FUNDS 414,592.89****PRESBYTERY FOUNDATION**

1-0312 - Finch Christian Ed Fund - PF 24,017.00

1-0312 - I - Finch Christian Ed Fund - Gains 1,646.87

1-0324 - Church Memorials &amp; Endow - PF 10,801.00

1-0324 - I - Church Memorials &amp; Endow - Gains 655.92

**Total PRESBYTERY FOUNDATION 37,120.79****Total NEW COVENANT/PRESBYTERY FOUNDATION INVESTMENTS 451,713.68****Total INVESTMENTS 639,523.33****OTHER ASSETS****CURRENT ASSETS**

1-0407 - 501 Building Receivables 0.00

1-0408 - Building Use Receivable 0.00

1-0406 - A/R Glory Be 1,322.99

**Total CURRENT ASSETS 1,322.99****LONG TERM ASSETS****PROPERTIES**

1-0450 - Sanctuary 150,000.00

1-0452 - Hunter Building 500,000.00

1-0455 - Multi-Purpose Building 546,788.00

**Total PROPERTIES 1,196,788.00****501 Building**

1-0501 - 501 Building 380,000.00

1-0503 - Parking Lots 120,000.00

**Total 501 BUILDING 500,000.00****Total LONG TERM ASSETS 1,696,788.00****Total OTHER ASSETS 1,698,110.99****Total ASSETS 2,509,370.47****LIABILITIES AND EQUITY****LIABILITIES****PAYABLES****ACCOUNTS PAYABLE**

2-0000 - Account Payable 5,715.60

2-4000 - Payroll Liabilities 4.58

**Total ACCOUNTS PAYABLE 5,720.18****501 BUILDING PAYABLES**

2-1991 - 501 Building Loan - BankCDA 80,424.23

2-1995 - 501 Lease Deposits 2,163.58

**Total 501 BUILDING PAYABLES 82,587.81****Total PAYABLES 88,307.99**

<b>RESTRICTED LIABILITIES</b>	
<b>ADULT MINISTRIES</b>	
2-0506 - Adult Discipleship Funding	613.58
2-0901 - Christ Care Kitchen (Keepers)	391.47
2-0902 - Christ Care General	61.12
2-0507 - Dave Ramsey Scholarship Funds	211.02
2-0903 - Family Promise	838.72
2-0233 - History Ministry Memorial	213.66
2-0910 - Weddings and Funerals	747.96
<b>Total ADULT MINISTRIES</b>	<b>3,077.53</b>
<b>BUILDING &amp; GROUNDS</b>	
2-0253 - June Ford Office Endowment Fund - Interest	
<b>Total BUILDING &amp; GROUNDS</b>	<b>0.00</b>
<b>CHILDREN &amp; FAMILIES</b>	
2-0401 - Christian Ed - Library	
2-0403 - Folgelson Christian Ed - Interest	8,797.18
2-0406 - Sunday School Offering	46.01
2-0409 - Sunday Nursery Funding	279.99
2-0412 - Crum Scholarship (loan type)	283.00
2-0415 - Baker Scholarship - Interest	78.71
2-0421 - Finch Christian Ed - Interest	-889.60
2-0424 - Noisy Offering	1,029.23
2-0428 - Akin Scholarship - Interest	242.41
<b>Total CHILDREN &amp; FAMILIES</b>	<b>9,866.93</b>
<b>2-1400 - CLEARING ACCOUNTS</b>	
2-1400 - Funds awaiting distribution	225.00
<b>Total CLEARING ACCOUNTS</b>	<b>225.00</b>
<b>MISSIONS &amp; OFFERINGS</b>	
2-0349 - Stuck Thailand Mission	0.00
2-0336 - Bolivia Mission	0.00
2-0301 - Missions Committee	1,381.13
2-0309 - Ecumenical Food Kitchen	289.64
2-0356 - NCV Mission Trip Funds	5,087.00
2-0330 - Staff of Hope	200.00
2-0503 - Turkey Fund	11.00
<b>Total MISSIONS &amp; OFFERINGS</b>	<b>6,948.77</b>
<b>WORSHIP &amp; MUSIC</b>	
2-0722 - Special Project Holding Acct.	621.02
2-0703 - Music Donations	0.00
2-0715 - Worship/CD Designated Funding	166.39
<b>Total WORSHIP &amp; MUSIC</b>	<b>787.41</b>
<b>YOUTH</b>	
2-0602 - Camp Scholarships	242.67
2-0601 - Youth Funding	6,717.53
<b>Total YOUTH</b>	<b>6,960.20</b>
<b>Total MINISTRY TEAMS RESTRICTED LIABILITIES</b>	<b>27,865.84</b>
<b>SPECIAL FUNDING</b>	
2-1311 - M2M Children and Families Director	0.00
2-1312 - M2M Outreach Funds	3,190.87
2-1230 - New Sanctuary Donations	112,110.17
<b>Total SPECIAL FUNDING</b>	<b>115,301.04</b>
<b>Total RESTRICTED LIABILITIES</b>	<b>143,166.88</b>

<b>ENDOWMENT FUND PRINCIPAL</b>	
<b>NEW COVENANT MUTUAL FUNDS PRINCIPAL</b>	
2-2201 - Folgelson Principal	80,000.00
2-2203 - June Ford Office Endow. Principal	5,500.00
2-2206 - Baker Scholarship Principal	11,680.00
2-2210 - Finch Christ Ed	5,819.27
2-2218 - Phippeny Principal	114,209.36
2-2228 - Akin Scholarship Principal	54,495.00
<b>Total NEW COVENANT MUTUAL FUNDS</b>	<b>271,703.63</b>
<b>PRESBYTERY FOUNDATION PRINCIPAL</b>	
2-3312 - Finch Perm Endowment Principal	24,066.47
2-3324 - Church Mem/Endowment Principal	10,801.00
<b>Total PRESBYTERY FOUNDATION PRINCIPAL</b>	<b>34,867.47</b>
<b>Total ENDOWMENT FUND PRINCIPAL</b>	<b>306,571.10</b>
<b>UNRESTRICTED ENDOWMENTS/MEMORIALS</b>	
2-0260 - Reserve/Savings	29,005.31
2-0227 - OGG Bequest	1,577.22
2-0228 - Walden Memorial	87,876.48
2-0241 - Church Memorial Endow. Interest	139.93
2-0258 - Phippeny Memorial - Interest	12,714.66
2-0234 - General Endowment Fund	1,000.00
2-0230 - Special Memorials - General	793.21
<b>Total UNRESTRICTED ENDOWMENTS/MEMORIALS</b>	<b>133,106.81</b>
<b>Total LIABILITIES</b>	<b>671,152.78</b>
<b>EQUITY</b>	
3-8000 - General Fund	1,469,919.30
3-8100 - 501 Building Fund	321,544.92
Net Income (Loss)	46,753.47
<b>Total GENERAL EQUITY ACCOUNTS</b>	<b>1,838,217.69</b>
<b>Total EQUITY</b>	<b>1,838,217.69</b>
<b>Total LIABILITIES AND EQUITY</b>	<b>2,509,370.47</b>

## Analysis - Profit & Loss Operations December 2014

INCOME	Full Year Budget	MTD Actual	MTD Budget	Variance MTD Act.		YTD Actual	YTD Budget	Variance YTD Act.	
				Vs. Budget	YTD Actual			Vs. Budget	
<b>Offering Income</b>									
4-0110 - Envelope Offering	\$ 411,660.00	\$ 42,403.00	\$ 34,305.00	\$ 8,098.00	\$ 407,815.24	\$ 411,660.00	\$ (3,844.76)		
4-0120 - Loose Offering	\$ 32,000.00	\$ 4,776.51	\$ 2,666.67	\$ 2,109.84	\$ 53,912.16	\$ 32,000.00	\$ 21,912.16		
<b>Total OFFERING INCOME</b>	<b>\$ 443,660.00</b>	<b>\$ 47,179.51</b>	<b>\$ 36,971.67</b>	<b>\$ 10,207.84</b>	<b>\$ 461,727.40</b>	<b>\$ 443,660.00</b>	<b>\$ 18,067.40</b>		
<b>Other Income</b>									
4-0150 - Per Capita	\$ 4,800.00	\$ 37.00	\$ 400.00	\$ (363.00)	\$ 2,268.75	\$ 4,800.00	\$ (2,531.25)		
4-0160 - Building Use	\$ 7,500.00	\$ 825.00	\$ 625.00	\$ 200.00	\$ 5,525.00	\$ 7,500.00	\$ (1,975.00)		
4-0170 - Interest Income	\$ 500.00	\$ 16.14	\$ 41.67	\$ (25.53)	\$ 126.64	\$ 500.00	\$ (373.36)		
4-0150 - Carryover profit from 2013	\$ 2,116.15	\$ -	\$ 176.35	\$ (1,763.55)	\$ -	\$ 2,116.15	\$ (2,116.15)		
<b>Total OTHER INCOME</b>	<b>\$ 14,916.15</b>	<b>\$ 878.14</b>	<b>\$ 1,243.01</b>	<b>\$ (364.87)</b>	<b>\$ 7,920.44</b>	<b>\$ 14,916.15</b>	<b>\$ (6,995.71)</b>		
<b>Total Income</b>	<b>\$ 458,576.15</b>	<b>\$ 47,459.65</b>	<b>\$ 38,214.68</b>	<b>\$ 9,244.97</b>	<b>\$ 469,647.84</b>	<b>\$ 458,576.15</b>	<b>\$ 11,071.69</b>		
<b>EXPENSES</b>									
<b>PAYROLL &amp; BENEFITS</b>									
<b>PASTORAL COMPENSATION</b>									
5-0103 - Pastor Salary	\$ 48,300.00	\$ 4,025.00	\$ 4,025.00	\$ -	\$ 48,300.00	\$ 48,300.00	\$ -		
5-0106 - Pastor Housing	\$ 20,500.00	\$ 1,706.34	\$ 1,706.34	\$ -	\$ 20,500.00	\$ 20,500.00	\$ (10.58)		
5-0104 - Pastor SECA	\$ 5,021.00	\$ 418.42	\$ 418.42	\$ (0.00)	\$ 5,021.04	\$ 5,021.00	\$ (0.04)		
5-0109 - Pastor Auto/Prof Expenses	\$ 4,000.00	\$ 355.52	\$ 333.33	\$ (22.19)	\$ 2,695.55	\$ 4,000.00	\$ 1,304.45		
5-0122 - Pastor Continuing Ed	\$ 1,500.00	\$ 96.44	\$ 125.00	\$ 28.56	\$ 1,072.65	\$ 1,500.00	\$ 427.35		
5-0117 - Pastor Sec. 105-Medical Reimb.	\$ 5,000.00	\$ 517.55	\$ 416.67	\$ (100.88)	\$ 4,619.33	\$ 5,000.00	\$ 380.67		
5-0115 - Pastor Medical	\$ 17,385.00	\$ 2,901.69	\$ 1,447.08	\$ (1,454.61)	\$ 18,326.23	\$ 17,385.00	\$ (941.23)		
5-0116 - Pastor Dental	\$ 1,700.00	\$ 126.33	\$ 141.67	\$ 15.34	\$ 1,539.66	\$ 1,700.00	\$ 160.34		
5-0120 - Retirement Board of Pen.	\$ 8,305.00	\$ 692.08	\$ 692.08	\$ (0.00)	\$ 8,304.94	\$ 8,305.00	\$ (0.04)		
5-0105 - Pastor Death/Disability	\$ 1,235.00	\$ 122.92	\$ 102.92	\$ (20.00)	\$ 1,475.04	\$ 1,235.00	\$ (240.04)		
5-0121 - Pulpit Fill	\$ 600.00	\$ -	\$ 50.00	\$ 50.00	\$ 600.00	\$ 600.00	\$ -		
<b>Total PASTORAL COMPENSATION</b>	<b>\$ 113,526.00</b>	<b>\$ 10,966.79</b>	<b>\$ 9,460.51</b>	<b>\$ (1,506.24)</b>	<b>\$ 112,434.84</b>	<b>\$ 113,526.00</b>	<b>\$ 1,091.16</b>		
<b>PROGRAM STAFF</b>									
5-0202 - Director of Children and Families	\$ 28,600.00	\$ 3,120.00	\$ 2,383.33	\$ (736.67)	\$ 20,546.21	\$ 28,600.00	\$ 8,053.79		
5-0211 - Director of Comm./Outreach	\$ 28,080.00	\$ 2,340.00	\$ 2,340.00	\$ -	\$ 28,080.00	\$ 28,080.00	\$ -		
5-0203 - Music Director Wages	\$ 8,703.50	\$ 825.30	\$ 725.29	\$ (100.01)	\$ 8,953.60	\$ 8,703.50	\$ (250.10)		
5-0206 - Organist/Pianist Wages	\$ 11,247.60	\$ 727.50	\$ 937.30	\$ 209.80	\$ 10,044.63	\$ 11,247.60	\$ 1,202.97		
5-0209 - Organist Substitute Wages	\$ 1,050.00	\$ -	\$ 87.50	\$ 87.50	\$ -	\$ 1,050.00	\$ (1,050.00)		
5-0201 - Youth Director Wages	\$ 7,800.00	\$ 1,144.20	\$ 650.00	\$ (494.20)	\$ 8,321.47	\$ 7,800.00	\$ (521.47)		
<b>Total PROGRAM STAFF</b>	<b>\$ 85,481.10</b>	<b>\$ 8,187.00</b>	<b>\$ 7,123.43</b>	<b>\$ (1,063.67)</b>	<b>\$ 76,947.93</b>	<b>\$ 85,481.10</b>	<b>\$ 8,536.27</b>		
<b>SUPPORT STAFF</b>									
5-0301 - Administrator Wages	\$ 33,280.00	\$ 2,773.34	\$ 2,773.34	\$ -	\$ 33,280.00	\$ 33,280.00	\$ (0.00)		
5-0307 - Bookkeeper Wages	\$ 28,697.45	\$ 2,391.46	\$ 2,391.46	\$ -	\$ 28,697.52	\$ 28,697.45	\$ (0.07)		
5-0310 - Custodian Wages	\$ 24,960.00	\$ 2,295.00	\$ 2,080.00	\$ (215.00)	\$ 25,512.23	\$ 24,960.00	\$ (552.23)		
5-0308 - Employee Health Stipend	\$ 4,800.00	\$ 444.08	\$ 400.00	\$ (44.08)	\$ 4,494.08	\$ 4,800.00	\$ 305.92		
5-0312 - Nursery Supervisor Wages	\$ 3,536.00	\$ 170.00	\$ 294.67	\$ 124.67	\$ 2,997.00	\$ 3,536.00	\$ 539.00		
5-0315 - Nursery Helpers Wages	\$ 5,121.00	\$ 384.38	\$ 426.75	\$ 42.37	\$ 4,066.91	\$ 5,121.00	\$ 1,054.09		
5-0318 - Sound Tech Wages	\$ 2,600.00	\$ 230.00	\$ 216.67	\$ (13.33)	\$ 2,270.00	\$ 2,600.00	\$ 330.00		
5-0319 - Office Manager Fill	\$ 600.00	\$ -	\$ 50.00	\$ 50.00	\$ 240.00	\$ 600.00	\$ 360.00		
5-0320 - Custodian Fill	\$ 360.00	\$ -	\$ 30.00	\$ 30.00	\$ 216.00	\$ 360.00	\$ 144.00		
<b>Total SUPPORT STAFF</b>	<b>\$ 103,954.45</b>	<b>\$ 8,688.26</b>	<b>\$ 8,662.69</b>	<b>\$ (25.76)</b>	<b>\$ 101,683.82</b>	<b>\$ 103,954.45</b>	<b>\$ 2,270.63</b>		
<b>STAFF TAXES</b>									
5-0900 - FICA & Medicare / Employer	\$ 14,013.69	\$ 1,288.66	\$ 1,187.81	\$ (100.85)	\$ 13,552.94	\$ 14,013.69	\$ 460.75		
5-0903 - Workman's Comp / Employer	\$ 2,787.00	\$ (36.01)	\$ 232.25	\$ 268.26	\$ 2,854.62	\$ 2,787.00	\$ (67.62)		
<b>Total STAFF TAXES</b>	<b>\$ 16,800.69</b>	<b>\$ 1,252.65</b>	<b>\$ 1,420.06</b>	<b>\$ 147.41</b>	<b>\$ 16,387.64</b>	<b>\$ 16,800.69</b>	<b>\$ 443.13</b>		
<b>Total PAYROLL &amp; BENEFITS</b>	<b>\$ 319,762.24</b>	<b>\$ 29,064.64</b>	<b>\$ 26,646.67</b>	<b>\$ (2,417.97)</b>	<b>\$ 306,424.15</b>	<b>\$ 319,762.24</b>	<b>\$ 13,338.09</b>		

ADMINISTRATION	Full Year Budget	MTD Actual	MTD Budget	Variance MTD Act.		YTD Actual	YTD Budget	Variance YTD Act.	
				Vs. Bud	YTD Actual			Vs. Bud	
6-0101 - Office Supplies	\$ 6,500.00	\$ 1,718.48	\$ 541.67	\$ (1,176.52)	\$ 6,462.30	\$ 6,500.00	\$ 37.70		
6-0100 - Postage	\$ 2,400.00	\$ 265.34	\$ 200.00	\$ (65.34)	\$ 2,327.27	\$ 2,400.00	\$ 272.73		
6-0106 - Telephone	\$ 2,457.60	\$ 439.88	\$ 204.80	\$ (235.08)	\$ 4,544.85	\$ 2,457.60	\$ (2,089.25)		
6-0112 - Copier - Maint & Operations	\$ 7,000.00	\$ 1,518.24	\$ 583.33	\$ (934.91)	\$ 7,801.31	\$ 7,000.00	\$ (801.31)		
6-0115 - Communications/Advertising	\$ 4,500.00	\$ 2,882.09	\$ 375.00	\$ (2,507.09)	\$ 5,382.39	\$ 4,500.00	\$ (882.39)		
6-0119 - Per Capita Expense	\$ 10,296.00	\$ -	\$ 858.00	\$ 858.00	\$ 10,296.00	\$ 10,296.00	\$ -		
6-0122 - Bank Service Charges	\$ 700.00	\$ 25.75	\$ 56.33	\$ 30.58	\$ 659.20	\$ 700.00	\$ (150.20)		
6-0123 - Security Checks	\$ 350.00	\$ 33.95	\$ 29.17	\$ (4.78)	\$ 251.15	\$ 350.00	\$ 98.85		
<b>Total ADMINISTRATION</b>	<b>\$ 34,203.60</b>	<b>\$ 6,963.73</b>	<b>\$ 2,850.30</b>	<b>\$ (4,083.43)</b>	<b>\$ 37,831.60</b>	<b>\$ 34,203.60</b>	<b>\$ (3,327.90)</b>		
<b>FACILITIES</b>									
6-0201 - Insurance	\$ 10,022.38	\$ -	\$ 835.20	\$ 835.20	\$ 10,246.13	\$ 10,022.38	\$ (223.77)		
6-0203 - Maintenance & Repairs	\$ 15,600.00	\$ 2,267.27	\$ 1,300.17	\$ (967.10)	\$ 14,044.50	\$ 15,600.00	\$ 1,555.50		
6-0204 - Snow Plowing	\$ 700.00	\$ -	\$ 56.33	\$ 56.33	\$ 1,200.00	\$ 700.00	\$ (500.00)		
6-0202 - Parking	\$ 1,200.00	\$ 100.00	\$ 100.00	\$ -	\$ 1,100.00	\$ 1,200.00	\$ 100.00		
6-0206 - Organ and Piano Tuning	\$ 800.00	\$ -	\$ 66.67	\$ 66.67	\$ 100.00	\$ 800.00	\$ 700.00		
6-0208 - Property Taxes	\$ 40.00	\$ -	\$ 3.33	\$ 3.33	\$ 35.00	\$ 40.00	\$ 5.00		
6-0232 - Mom. To Mov. Loan Interest	\$ -	\$ -	\$ -	\$ -	\$ 370.83	\$ -	\$ (370.83)		
6-0211 - Municipal Fees and Taxes	\$ 125.00	\$ -	\$ 10.42	\$ 10.42	\$ 125.00	\$ 125.00	\$ -		
6-0230 - Security System Maintenance	\$ 432.00	\$ 108.00	\$ 36.00	\$ (72.00)	\$ 645.00	\$ 432.00	\$ (213.00)		
6-0223 - 521 Lakeside Utilities	\$ 27,580.00	\$ 2,333.68	\$ 2,296.67	\$ (37.01)	\$ 27,565.88	\$ 27,580.00	\$ (14.12)		
<b>Total FACILITIES</b>	<b>\$ 56,481.36</b>	<b>\$ 5,308.95</b>	<b>\$ 4,706.78</b>	<b>\$ (602.17)</b>	<b>\$ 55,429.34</b>	<b>\$ 56,481.36</b>	<b>\$ 1,052.02</b>		
<b>MINISTRY TEAMS</b>									
6-0900 - Adult Discipleship	\$ 450.00	\$ 12.60	\$ 37.50	\$ 24.90	\$ 255.07	\$ 450.00	\$ 194.93		
6-0401 - Children & Families Ministry	\$ 4,186.80	\$ 1,770.40	\$ 348.90	\$ (1,421.50)	\$ 4,337.79	\$ 4,186.80	\$ (150.99)		
6-0703 - Choe Music	\$ 2,150.00	\$ -	\$ 179.17	\$ 179.17	\$ 1,420.53	\$ 2,150.00	\$ 729.47		
6-0901 - Choe Care	\$ 1,000.00	\$ -	\$ 83.33	\$ 83.33	\$ 248.20	\$ 1,000.00	\$ 751.80		
6-0902 - Deacons	\$ 300.00	\$ 25.00	\$ 25.00	\$ -	\$ 320.18	\$ 300.00	\$ (20.18)		
6-0907 - Guest Welcoming Team	\$ 900.00	\$ -	\$ 75.00	\$ 75.00	\$ 706.18	\$ 900.00	\$ 193.82		
6-0906 - Membership Team	\$ 1,350.00	\$ 116.48	\$ 112.50	\$ (3.98)	\$ 1,048.98	\$ 1,350.00	\$ 301.02		
6-0301 - Missions Team	\$ 34,272.15	\$ 1,756.00	\$ 2,856.01	\$ 1,100.01	\$ 35,031.50	\$ 34,272.15	\$ (759.35)		
6-0821 - Personnel Committee	\$ 225.00	\$ -	\$ 18.75	\$ 18.75	\$ 60.00	\$ 225.00	\$ 165.00		
6-0801 - Stewardship	\$ 1,100.00	\$ -	\$ 91.67	\$ 91.67	\$ 502.95	\$ 1,100.00	\$ 597.05		
6-0851 - Sanctuary Technology Team	\$ 1,954.00	\$ 568.61	\$ 162.83	\$ (405.78)	\$ 2,013.87	\$ 1,954.00	\$ (59.87)		
6-0852 - Office Technology Team	\$ 1,900.00	\$ 641.23	\$ 160.83	\$ (480.40)	\$ 1,410.08	\$ 1,900.00	\$ 489.92		
6-0710 - Worship Design	\$ 2,061.00	\$ 508.95	\$ 474.75	\$ (33.20)	\$ 1,357.72	\$ 2,061.00	\$ 703.28		
6-0601 - Youth Team	\$ 2,500.00	\$ 348.33	\$ 208.33	\$ (140.00)	\$ 2,390.43	\$ 2,500.00	\$ 109.57		
<b>Total MINISTRY TEAMS</b>	<b>\$ 54,378.95</b>	<b>\$ 5,722.60</b>	<b>\$ 4,831.88</b>	<b>\$ (1,191.02)</b>	<b>\$ 51,103.45</b>	<b>\$ 54,378.95</b>	<b>\$ 3,275.50</b>		
<b>Total EXPENSES</b>	<b>\$ 464,826.15</b>	<b>\$ 46,999.94</b>	<b>\$ 38,735.53</b>	<b>\$ (8,264.41)</b>	<b>\$ 456,488.44</b>	<b>\$ 464,826.15</b>	<b>\$ 14,587.81</b>		
<b>Net Total</b>	<b>\$ (6,250.00)</b>	<b>\$ 459.71</b>	<b>\$ (520.85)</b>	<b>\$ 17,509.38</b>	<b>\$ 19,159.40</b>	<b>\$ (6,250.00)</b>	<b>\$ (3,516.12)</b>		

### Analysis - Profit & Loss Properties December 2014

	Yearly Budget	MTD Actual	MTD Budget	Variance MTD		Variance YTD Act.	
				Act. Vs. Bud	YTD Actual	YTD Budget	Vs. Bud
<b>501 BUILDING INCOME</b>							
8-0051 - 501 Lease Income	\$ 53,313.00	\$ 4,987.41	\$ 4,442.75	\$ (544.66)	\$ 59,276.75	\$ 48,870.25	\$ (10,406.50)
8-0053 - 501 Envelope Offering	\$ 50.00	\$ -	\$ 4.17	\$ 4.17	\$ 30.00	\$ 45.83	\$ 15.83
8-0056 - 501 Interest Income	\$ -	\$ -	\$ -	\$ -	\$ -	\$ -	\$ -
8-0062 - Parking Lot Income	\$ 8,400.00	\$ 700.00	\$ 700.00	\$ -	\$ 8,400.00	\$ 7,700.00	\$ 700.00
<b>Total 501 BUILDING INCOME</b>	<b>\$ 61,763.00</b>	<b>\$ 5,687.41</b>	<b>\$ 5,146.92</b>	<b>\$ (540.49)</b>	<b>\$ 67,706.75</b>	<b>\$ 56,616.08</b>	<b>\$ (9,690.67)</b>
<b>501 BUILDING EXPENSES</b>							
501 Loan Interest	\$ 6,700.00	\$ 291.35	\$ 558.33	\$ 266.98	\$ 4,634.95	\$ 6,141.67	\$ 1,506.72
Property Taxes	\$ 11,994.98	\$ -	\$ 999.58	\$ 999.58	\$ 11,993.17	\$ 10,995.40	\$ (997.77)
Property Repairs	\$ 500.00	\$ -	\$ 41.67	\$ 41.67	\$ 6,785.65	\$ 458.33	\$ (6,327.32)
Municipal Fees and Taxes	\$ 125.00	\$ -	\$ 10.42	\$ 10.42	\$ -	\$ 114.58	\$ 114.58
501 Income Taxes	\$ 700.00	\$ -	\$ 58.33	\$ 58.33	\$ 1,304.87	\$ 641.67	\$ (663.20)
501 Property Insurance	\$ 1,628.00	\$ -	\$ 135.67	\$ 135.67	\$ 2,561.53	\$ 1,492.33	\$ (1,069.20)
Parking Lot Maint & Snow Removal	\$ -	\$ -	\$ -	\$ -	\$ -	\$ -	\$ -
501 Lakeside Utilities	\$ 12,425.00	\$ 1,204.09	\$ 1,035.42	\$ (168.67)	\$ 12,832.51	\$ 11,389.58	\$ (1,442.93)
501 Supplies	\$ -	\$ -	\$ -	\$ -	\$ -	\$ -	\$ -
<b>Total 501 BLDG EXPENSES</b>	<b>\$ 34,072.98</b>	<b>\$ 1,495.44</b>	<b>\$ 2,839.42</b>	<b>\$ 1,343.98</b>	<b>\$ 40,112.68</b>	<b>\$ 31,233.57</b>	<b>\$ (8,879.12)</b>
<b>OPERATING PROFIT</b>	<b>\$ 27,690.02</b>	<b>\$ 4,191.97</b>	<b>\$ 2,307.50</b>	<b>\$ (1,884.47)</b>	<b>\$ 27,594.07</b>	<b>\$ 25,382.52</b>	<b>\$ (811.55)</b>

Principal Loan payment: MTD: \$1,881.35 YTD: \$ 21437.45

### Analysis - Profit & Loss Glory Be Learning Center November 2014

	Full Year Budget	MTD Actual	MTD Budget	Variance MTD		Variance YTD	
				Act. Vs. Budget	YTD Actual	YTD Budget	Act. Vs. Budget
<b>GLORY BE INCOME</b>							
Tuition	\$ 158,970.00	\$ 12,385.18	\$ 13,247.50	\$ (862.32)	\$ 53,431.22	\$ 52,990.00	\$ 441.22
Scholarship Tuition	\$ 3,000.00	\$ -	\$ 250.00	\$ (250.00)	\$ 2,085.00	\$ 1,000.00	\$ 1,085.00
Reg. & Misc. Fees	\$ 3,000.00	\$ 200.00	\$ 250.00	\$ (50.00)	\$ 2,080.00	\$ 1,000.00	\$ 1,050.00
Contributions	\$ -	\$ 105.00	\$ -	\$ 105.00	\$ 190.00	\$ -	\$ 190.00
Fundraisers	\$ 1,300.00	\$ -	\$ 108.33	\$ (108.33)	\$ -	\$ 433.33	\$ (433.33)
<b>Total GLORY BE INCOME</b>	<b>\$ 166,270.00</b>	<b>\$ 12,690.18</b>	<b>\$ 13,855.83</b>	<b>\$ (1,165.65)</b>	<b>\$ 57,756.22</b>	<b>\$ 55,423.33</b>	<b>\$ 2,332.89</b>
<b>GLORY BE EXPENSES</b>							
Classroom Equipment	\$ 2,500.00	\$ -	\$ 208.33	\$ 208.33	\$ 19.07	\$ 833.33	\$ 814.26
Classroom Supplies	\$ 6,600.00	\$ 342.91	\$ 550.00	\$ 207.09	\$ 3,872.51	\$ 2,200.00	\$ (1,472.51)
Snacks	\$ 4,000.00	\$ 416.98	\$ 333.33	\$ (83.65)	\$ 1,374.09	\$ 1,333.33	\$ (40.76)
Special Activities	\$ 500.00	\$ -	\$ 41.67	\$ 41.67	\$ 108.00	\$ 166.67	\$ 60.67
Playground Expenses	\$ 1,800.00	\$ 35.98	\$ 150.00	\$ 114.04	\$ 35.98	\$ 600.00	\$ 564.04
Repairs/Maint.	\$ 100.00	\$ -	\$ 8.33	\$ 8.33	\$ -	\$ 33.33	\$ 33.33
Advertising	\$ 100.00	\$ -	\$ 8.33	\$ 8.33	\$ -	\$ 33.33	\$ 33.33
Office Supplies	\$ 300.00	\$ -	\$ 25.00	\$ 25.00	\$ 148.28	\$ 100.00	\$ (48.28)
Telephone	\$ 960.00	\$ 80.94	\$ 80.00	\$ (0.94)	\$ 323.76	\$ 320.00	\$ (3.76)
Bad Debt Expense	\$ -	\$ 185.00	\$ -	\$ (185.00)	\$ 185.00	\$ -	\$ (185.00)
Licensing and Fees	\$ 200.00	\$ -	\$ 16.67	\$ 16.67	\$ 290.00	\$ 66.67	\$ (223.33)
<b>Expenses Subtotal:</b>	<b>\$ 17,060.00</b>	<b>\$ 1,061.79</b>	<b>\$ 1,421.67</b>	<b>\$ 359.88</b>	<b>\$ 6,154.67</b>	<b>\$ 5,686.67</b>	<b>\$ (468.00)</b>
<b>PAYROLL</b>							
Director	\$ 28,592.54	\$ 2,445.57	\$ 2,216.05	\$ (229.53)	\$ 10,468.18	\$ 8,864.18	\$ (1,604.00)
Teachers	\$ 100,283.07	\$ 8,797.17	\$ 8,356.92	\$ (440.25)	\$ 34,324.95	\$ 33,427.69	\$ (897.26)
Cleaning	\$ 4,150.90	\$ 401.09	\$ 345.91	\$ (55.18)	\$ 1,427.97	\$ 1,383.63	\$ (44.34)
Health Stipend	\$ 5,400.00	\$ 450.00	\$ 450.00	\$ -	\$ 1,950.00	\$ 1,800.00	\$ (150.00)
Payroll Taxes	\$ 10,023.54	\$ 925.19	\$ 835.30	\$ (89.89)	\$ 3,685.12	\$ 3,341.18	\$ (343.94)
Worker's Comp	\$ 759.95	\$ 68.84	\$ 83.33	\$ (15.49)	\$ 238.80	\$ 253.32	\$ 14.52
Employee Incentives	\$ 1,000.00	\$ -	\$ 83.33	\$ 83.33	\$ 51.51	\$ 333.33	\$ 281.82
Continuing Education	\$ 1,000.00	\$ -	\$ 83.33	\$ 83.33	\$ -	\$ 333.33	\$ 333.33
<b>Payroll Subtotal</b>	<b>\$ 149,210.00</b>	<b>\$ 13,087.86</b>	<b>\$ 12,434.17</b>	<b>\$ (598.51)</b>	<b>\$ 52,146.56</b>	<b>\$ 49,736.67</b>	<b>\$ (2,365.56)</b>
<b>TOTAL GLORY BE EXPENSES</b>	<b>\$ 166,270.00</b>	<b>\$ 14,149.65</b>	<b>\$ 13,855.83</b>	<b>\$ (238.64)</b>	<b>\$ 58,301.23</b>	<b>\$ 55,423.33</b>	<b>\$ (2,833.56)</b>
<b>OPERATING PROFIT</b>	<b>\$ -</b>	<b>\$ (1,459.47)</b>	<b>\$ -</b>	<b>\$ (927.02)</b>	<b>\$ (545.01)</b>	<b>\$ -</b>	<b>\$ 5,166.45</b>

\*Please note: Glory Be School runs on a fiscal year from 09/01/2014 - 08/31/2015

## Balance Sheet Glory Be Learning Center

As of November 30, 2014

ASSETS	
Current Assets	
Checking/Savings	
General Funds- Washington Trust	3,456.13
Total Checking/Savings	3,456.13
Accounts Receivable	
Accounts Receivable	3,308.55
Total Accounts Receivable	3,308.55
Total Current Assets	6,764.68
<b>TOTAL ASSETS</b>	<b>6,764.68</b>
LIABILITIES & EQUITY	
Liabilities	
Current Liabilities	
Accounts Payable	-531.23
Restricted Funds	
Playground funds	0.00
Grants	0.00 *1
ICF Women's Gift Alliance Grant	0.00
Fundraiser Proceeds	350.50
Loft Fund	1,500.00
Scholarships	1,462.86 *2
Family Promise Scholarships	3,313.36
Total Restricted Funds	3,313.36
Total Current Liabilities	3,313.36
Total Liabilities	2,782.13
Equity	
Retained Earning	4,527.56
Net Income	-545.01
Total Equity	3,982.55
<b>TOTAL LIABILITIES &amp; EQUITY</b>	<b>6,764.68</b>

\* Footnotes for internal purposes only.

## Deacon's Report January 1 - December 31, 2014

<b>Beginning balance:</b>	<b>\$2,472.71</b>
<b>Total Receipts:</b>	
(Includes designated contributions, bank Rewards credit, reimbursements, and Green Cross clothing receipts.)	<b>\$12,332.88</b>
<b>EXPENSES:</b>	
<b>Charitable Contributions,</b> include St. Vincent's, Family Promise, and To help accident victims--	<b>\$5,172.00</b>
<b>Families in Need,</b> includes rent, motel, Bus fare, and meal assistance--	<b>1,793.70</b>
<b>Christmas Families,</b> includes gifts not provided by congregation, food vouchers, gas cards, and gift cards--	<b>1,177.09</b>
<b>Disaster Relief,</b> includes assistance to victims of storm damage--	<b>300.00</b>
<b>Fees and Supplies,</b> includes bank fees, knitting yarn and supplies, binders, and cooking materials for cooking outreach--	<b>1,566.52</b>
<b>Total Expenses to date:</b>	<b>\$10,009.31</b>
<b>Ending balance</b> (Beginning balance plus Total Receipts, minus Total Expenses, as of 12-16-14):	<b>\$4,796.28</b>

\*Remaining expenses for 2014 include the receipts for five remaining Christmas families whose lists were completed by the attending Deacon.

No receipts were submitted for communion expenses, the clothing give-away, or sunshine fund (cards for prayers and sympathy).

Submitted by Bill Burch, Deacon Treasurer

## 2014 Statistics

### New Members

- DARLENE BLOMGREN
- CONNIE BONI
- JASON BONI
- AMY BONI
- DAN BROWN
- DAVID EVERSON
- LAUREN EVERSON
- GINNY JENSEN
- LAURA KOEPKE
- KITTY KRIER
- KURT LYON
- PAULA LYON

- HOWARD MARTINSON
- EMILY ROGERS
- KATHY VERBURG

### Baptisms

- ETHAN BONI
- JASON BONI
- MAKENNA BONI
- EVAN JOHNSON
- CALLAHAN KUHLMANN
- CLAIRE KUHLMANN
- CREW KUHLMANN
- ANIKA TUNNELL

### Deaths

- SYBIL CHURCH
- GENEIVEVE HIBBARD
- PETER BENNER
- BETTY GHIO
- MICHAEL WYATT

## Worship Attendance

Service	1st Sun		2nd Sun		3rd Sun		4th Sun		5th Sun		Totals
	9:00 AM	11:00 AM	9:00 AM	11:00 AM	9:00 AM	11:00 AM	9:00 AM	11:00 AM	9:00 AM	11:00 AM	
Jan	164	78	181	89	213	78	262				1065
Feb	183	60	215	55	157	71	211	67			1019
Mar	154	56	196	44	242	60	168	66	168	83	1237
Apr	214	108	289	51	363	141	245	73			1484
May	216	83	274	53	163	43	163	69			1064
Jun	206	44	201	74	193	53	173	85	110	47	1186
Jul	198	82	193	68	231	78	270	68			1188
Aug	169	85	185	103	233	80	212	93	163	82	1405
Sep	316		232	69	205	77	209	49			1157
Oct	197	76	169	79	192	63	183	86			1045
Nov	187	67	248	61	202	94	214	79	202	88	1442
Dec	221	92	296	70	289	95	119				1182
	2425	831	2679	816	2683	933	2429	735	643	300	14,474

### Special Services:

Cantata (4pm) (4/13/14)	76
Good Friday (4/18)	134
Easter Service (4/20 - 2 services)	504
Cantata (4pm) (12/14/14)	73
Christmas Eve Services (5pm & 9pm)	376
<b>Total special</b>	<b>1163</b>

**144** Average Per Service

**TOTALS 15,637**

### Wed Noon Prayer Services

	3/5/2014	3/12/2014	3/19/2014	3/26/2014
Mar	55	35	25	32
	4/2/2014	4/9/2014	4/16/2014	
Apr	26	36	40	
<b>Total special</b>			<b>249</b>	

# 2014 ANNUAL REPORT | First Presbyterian Church of Coeur d'Alene

521 Lakeside Ave | Coeur d'Alene ID 83814  
(208) 667-8446 | Fax: (208) 664-8626  
[www.cdadowntownchurch.org](http://www.cdadowntownchurch.org)

