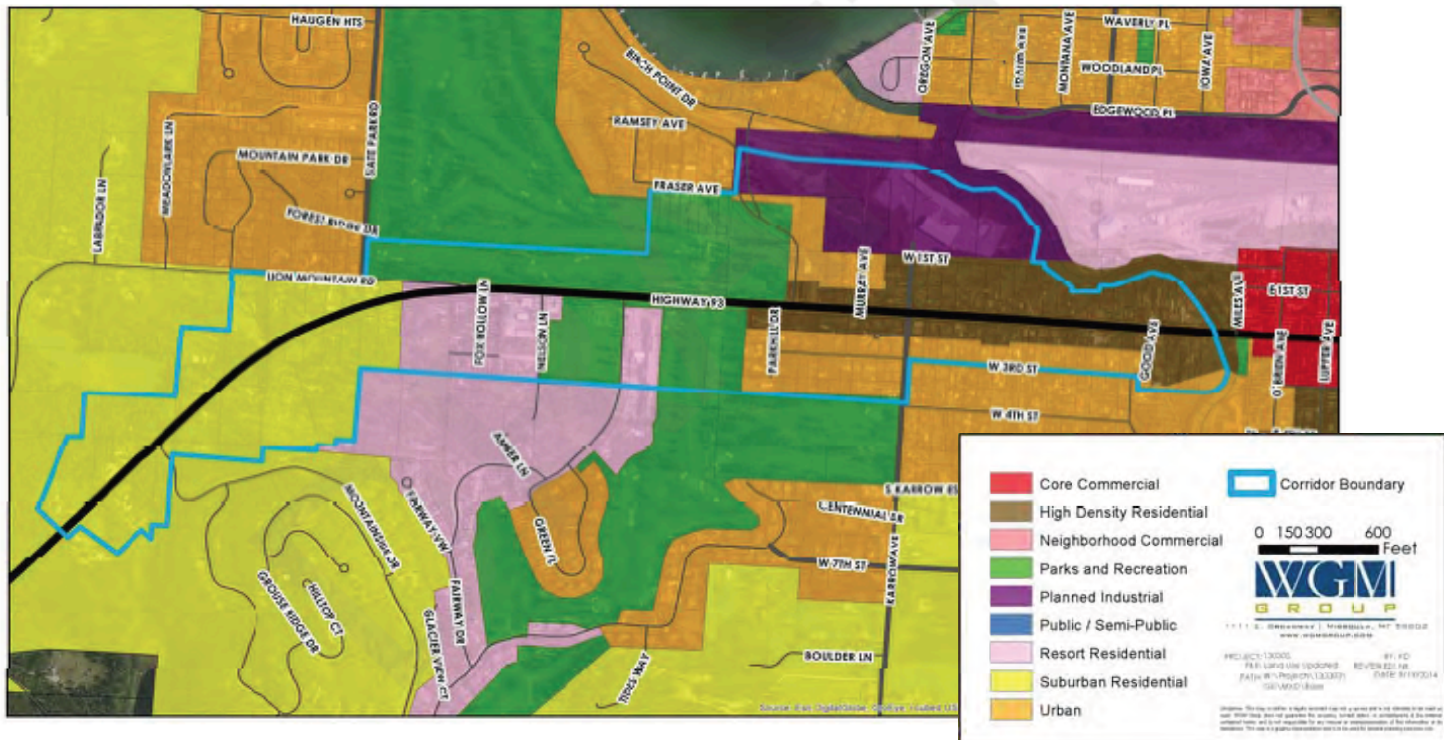


## Future Land Use – 2007 City of Whitefish Growth Policy

The 2007 Growth Policy anticipated continued residential development along the US Highway 93 West corridor with continued industrial use at the Idaho Timber site and continued open space and recreational facilitation at the golf course and municipal ball fields along with resort commercial. Higher density residential development was proposed closer to the core and along the highway frontage. Suburban residential was proposed beyond State Park Road.



See Page 25 [http://www.cityofwhitefish.org/large-files/pdf/Planning/Corridor%20Plan\\_DRAFT\\_11-25-2014.pdf](http://www.cityofwhitefish.org/large-files/pdf/Planning/Corridor%20Plan_DRAFT_11-25-2014.pdf)

## GROWTH POLICY LAND USE DESIGNATIONS

### Proposed Future Land Uses Map

The land use recommendations for the Highway 93 West Corridor are shown in the Proposed Future Land Uses Map below.

