



WQA tested and Certified  
against NSF/ANSI 372  
for "lead free" compliance.



## DIMENSIONS

Valve Size				
DIM	1"	1-1/4"	1-1/2"	2"
A	2.13	2.63	2.88	3.25
B <sup>1</sup>	3.16	3.31	3.41	3.63
C	1.56	1.94	2.19	2.75
D	1.72	2.11	2.38	3.07
J <sup>2</sup>	4.16	4.16	4.51	4.76
K	.66	.73	.73	.79
L	.83	.90	.10	1.41
M-40 <sup>3</sup>	1.10	1.38	1.61	2.07
M-80 <sup>4</sup>	.96	1.28	1.50	1.94
N-40 <sup>5</sup>	2.25	2.00	2.50	2.25
W <sup>6</sup>	1.13	1.25	1.41	1.69

ALL DIMENSIONS-INCHES

<sup>1</sup> Pertains to UPBBTSCW only.

<sup>2</sup> Pertains to UPBBTSCS02W only.

<sup>3</sup> M-40 ARE DIMENSIONS USING SCHEDULE 40 PIPE

<sup>4</sup> M-80 ARE DIMENSIONS USING SCHEDULE 80 PIPE

<sup>5</sup> N-40 IS FLOW RESISTANCE EXPRESSED IN EQUIVALENT LENGTH OF SCHEDULE 40 PIPE

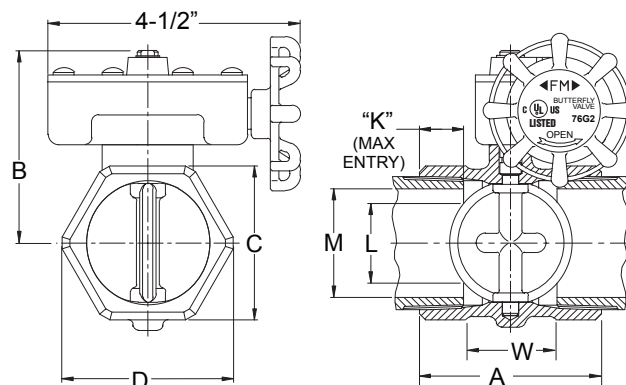
<sup>6</sup> W IS THE WRENCH MAKE-UP LENGTH

## FEATURES

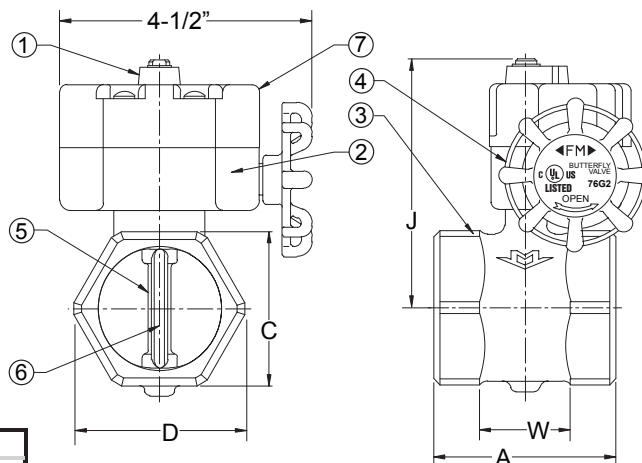
- Slow opening and closing
- Quarter turn operation
- Water Hammer elimination
- Optional internal tamper switch (Indoor/Outdoor use).
  - Signals disc movement
  - Factory or Field installation
  - 10 Amp / 115 VAC-60 Hz
  - 0.5 Amp / 28 VDC

## MATERIALS LIST

ITEM	PART	MATERIALS	ASTM SPEC.
1	Indicator	Iron	F0008P
2	Housing	Bronze	ASTM 584 UNS
3	Body	Bronze	C89833
4	Handle	Brass	ASTM B176 UNS C85800
5	Disk	Stainless Steel	ASTM A276, Type 304
6	Disk Seal	EPDM	
7	Switch Housing (BB-SCS02)	Aluminum	



**UPBBTSCW**  
Sizes 1", 1-1/4", 1-1/2", 2"



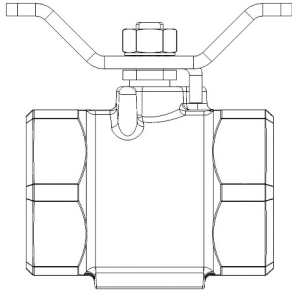
**UPBBTSC02W**  
(Includes Switch)  
Sizes 1", 1-1/4", 1-1/2", 2"

Milwaukee Valve Company  
16550 W. Stratton Drive  
New Berlin, WI 53151  
Phone: 262-432-2700  
Fax: 262-432-2701

**Note:** Lead free refers to the wetted surface of the pipe, fittings and fixtures in potable water systems that have a weighted average lead content ≤ 0.25%. Source: California Health and Safety Code (116875).

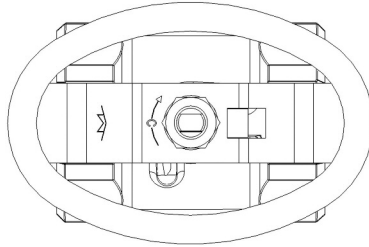
The information presented on this sheet is correct at the time of publication. Milwaukee Valve reserves the right to change design, and/or material specifications without notice. For the Installation, Operation and Maintenance Manual (IOM) see the engineering section on our website. For the most current information access [www.milwaukeevalve.com](http://www.milwaukeevalve.com)





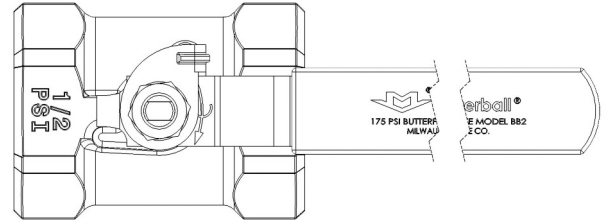
## Tee Handle Option

To Order Tee Handle,  
Add suffix "T" to Number.  
(E.g. BB2-100T)



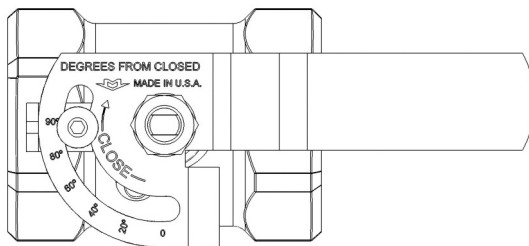
## Oval Handle Option

To Order Oval Handle,  
Add suffix "R" to Number.  
(E.g. BB2-100R)



## Memory Stop Option

To Order Memory Stop Option,  
Use this Model Number, BB2-102



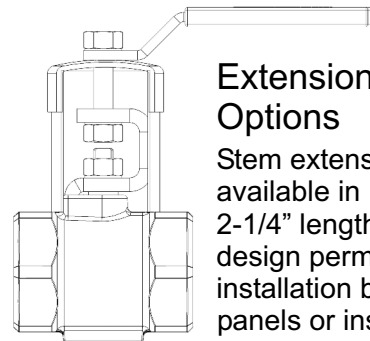
## Calibrated Memory Stop Handle Option

This Flow Set Handle Provides a  
visual 90 X Scale to Position  
the Memory Stop.

Order using Model Number BB2FS100.

Rev. 2

**NOTE:** Some Accessories Can be  
Combined for Added Versatility.  
Consult Factory.



## Extension Stem Options

Stem extensions are  
available in 1-1/4" &  
2-1/4" lengths. The  
design permits valve  
installation behind  
panels or inside  
equipment enclosures.

1-1/4" Extension, Order BB2-103

2-1/4" Extension, Order BB2-104