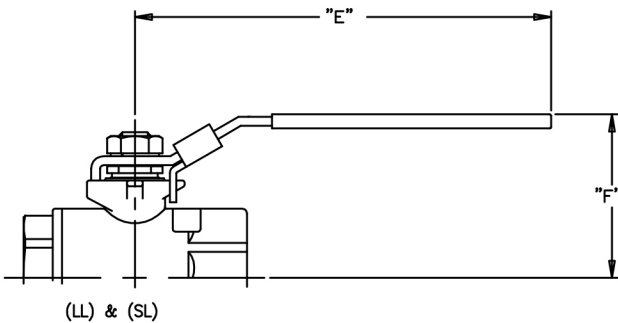
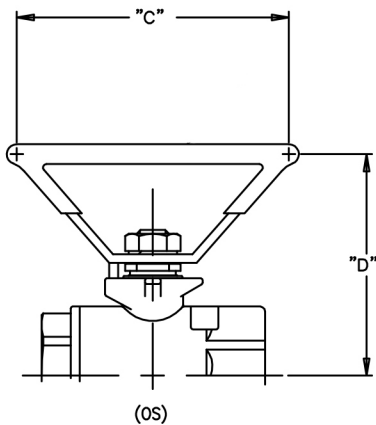


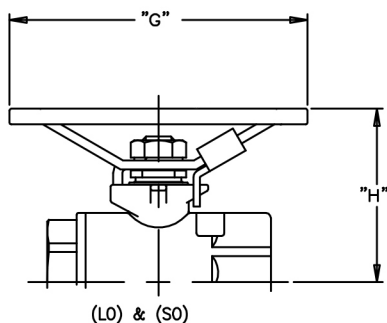
XH: The XH stem extension option provides clearance of the handle for operation when insulation on the piping system is required.



LL-SL: The LL and SL (spring loaded) option provides safety lockout of the handle in both the open and closed position. The SL option provides a spring loaded latch lock for situations when the valve is installed in a position where the locking feature would disengage. The spring loaded latch provides engagement of the lock in these positions without a padlock installed.



OS: The OS option provides clearance when a standard lever may interfere with adjacent piping or prevent accidental operation with a standard lever or other safety requirement.



LO-SO: These optional handles provide the same features as the OS option but also offer the padlock and spring loaded lockout features.