

ChildStat

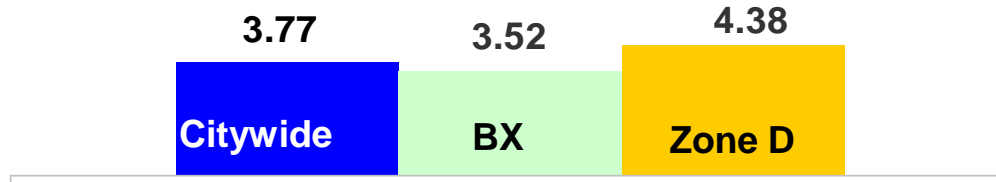
DATA INDICATORS

Bronx – Zone D

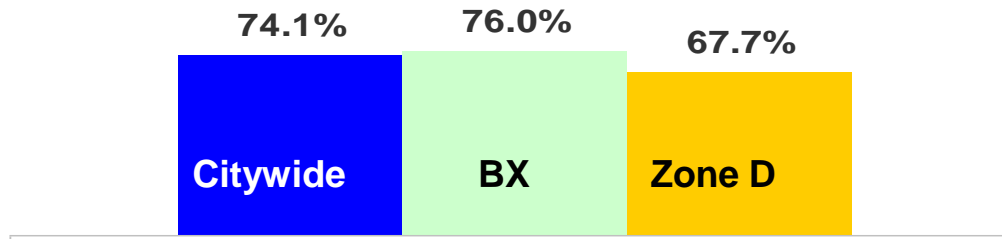
Bronx - Zone D

P/D Combined Pending Rate - BX Zone D, Jul. 17 – Aug. 13, 2011

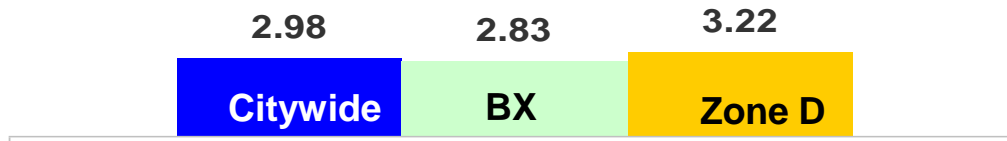
**Pending Rate Average
by Availability**



**Percent of Days
Available**



**Pending Rate
Average**



	Citywide	BX	Zone D
Average number of staff assigned per day*	1163.3	333.9	58.8
Average number of staff available per day**	861.9	253.8	39.8
Total cases assigned with pending credit	3253	894	174

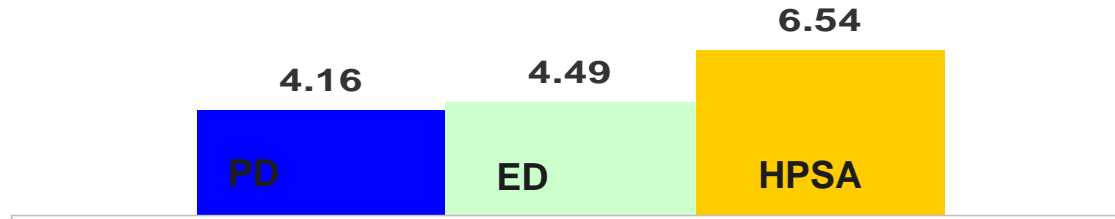
P/D Combined includes Protective/Diagnostic, Hospital/Sex Abuse and Ed. Neglect Units; Training Units are not included.

*The average number of staff assigned per day = the number of working days ÷ the number of business days.

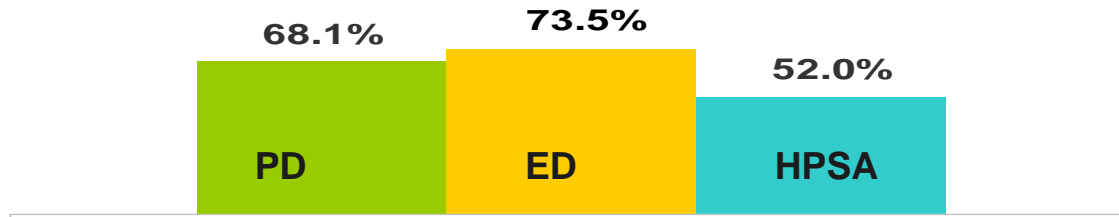
**The average number of staff available per day = the number of available days ÷ the total number of business days.

P/D Combined Pending Rate - BX Zone D Units, Jul. 17 – Aug. 13, 2011

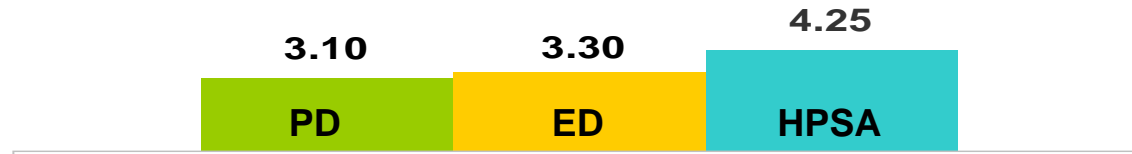
Pending Rate Average by Availability



Percent of Days Available



Pending Rate Average



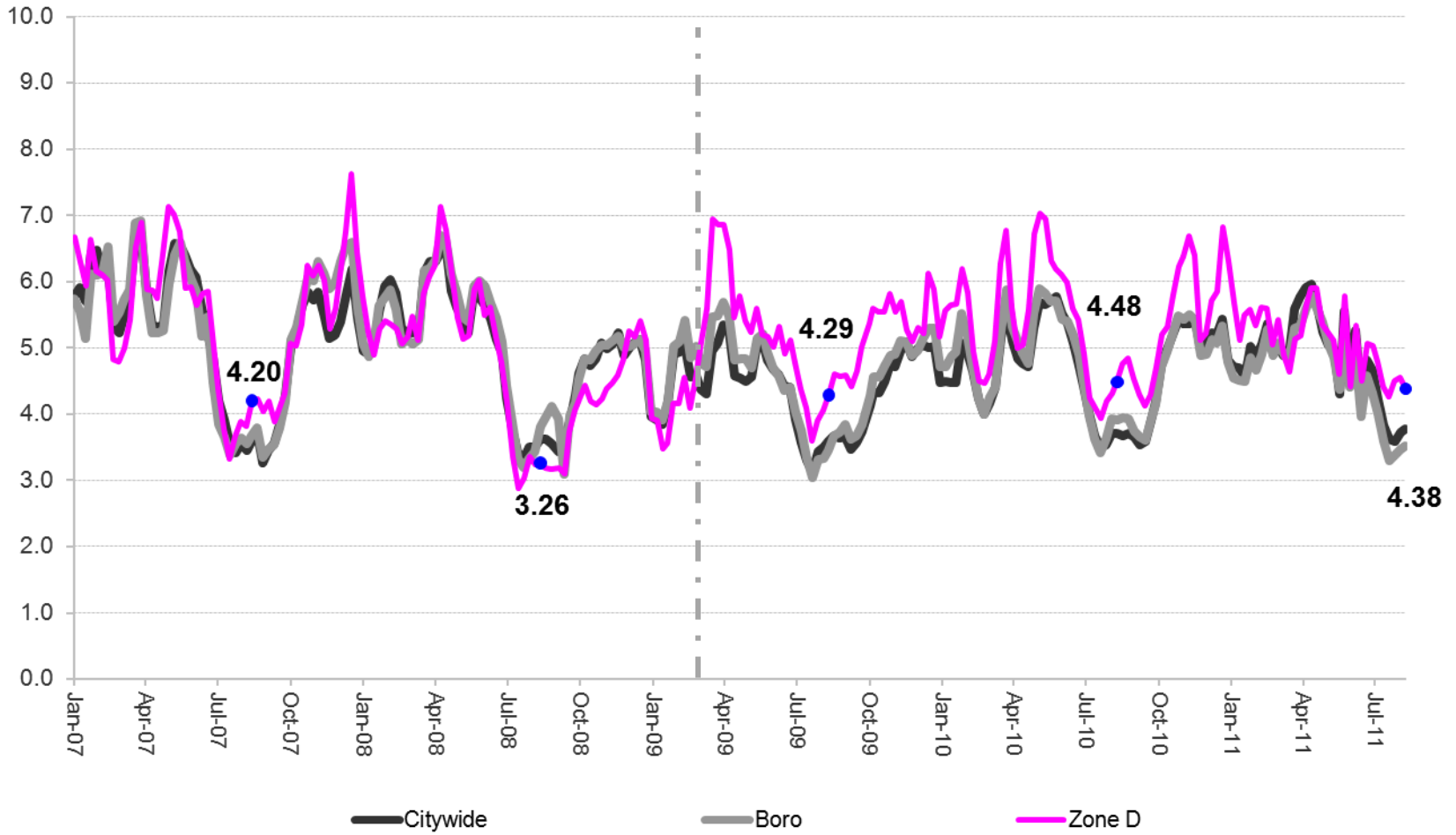
	PD	ED	HPSA
Average number of staff assigned per day*	43.8	10.0	5.0
Average number of staff available per day**	29.8	7.4	2.6
Total cases assigned with pending credit	124	33	17

P/D Combined includes Protective/Diagnostic, Hospital/Sex Abuse and Ed. Neglect Units; Training Units are not included.

*The average number of staff assigned per day = the number of working days ÷ the number of business days.

**The average number of staff available per day = the number of available days ÷ the total number of business days.

P/D Combined Pending Rate by Availability - BX Zone D, Jan. 6, 2007 – Aug. 13, 2011



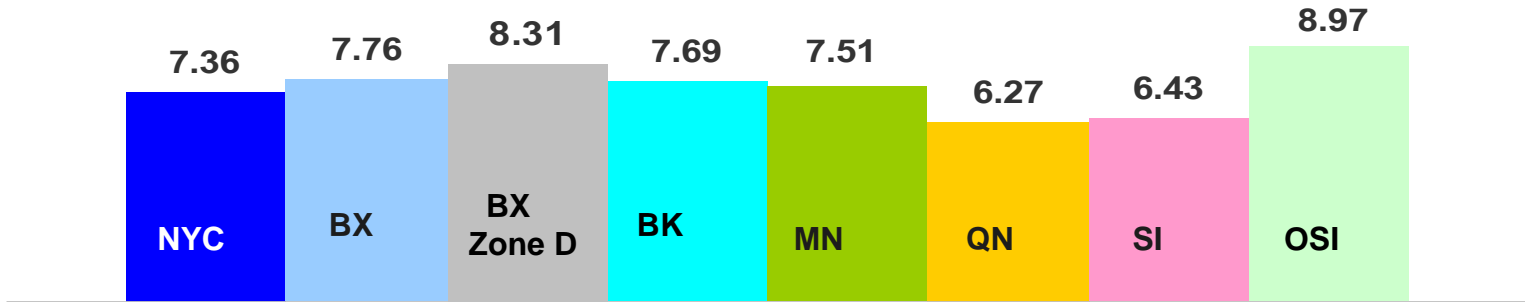
BX Zone D –
 4 Wk. Period Ending:
 Aug. 14, 2010 – 4.48
 Aug. 15, 2009 – 4.29
 Aug. 16, 2008 – 3.26
 Aug. 18, 2007 – 4.20

Last Childstat session for BX Zone D on Apr. 7th: **5.19**

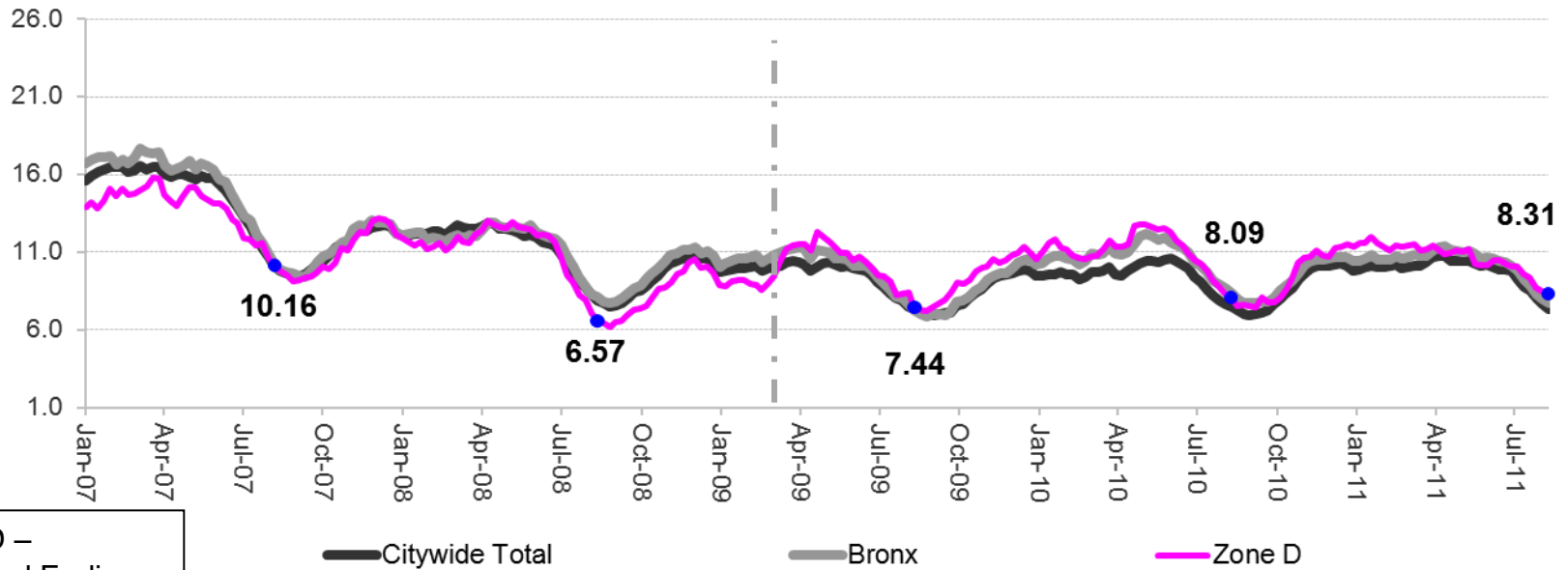
***Rezoning went into effect on 3/1/09**

P/D Combined includes Protective/Diagnostic, Hospital/Sex Abuse and Ed. Neglect Units; Training Units are not included.

Average CPS Caseload by Borough/Zone - P/D Combined – Aug. 13, 2011



Caseload Trends Jan. 6, 2007 – Aug. 13, 2011



BX Zone D –
 4 Wk. Period Ending:
 Aug. 14, 2010 – 8.09
 Aug. 15, 2009 – 7.44
 Aug. 16, 2008 – 6.57
 Aug. 11, 2007 – 10.16

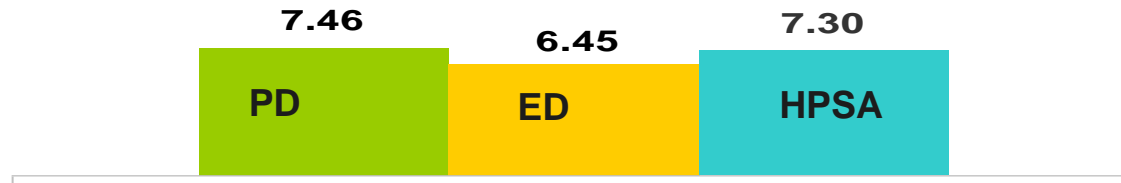
Last Childstat session for BX Zone D on Apr. 7th: 11.41

***Rezoning went into effect on 3/1/09**

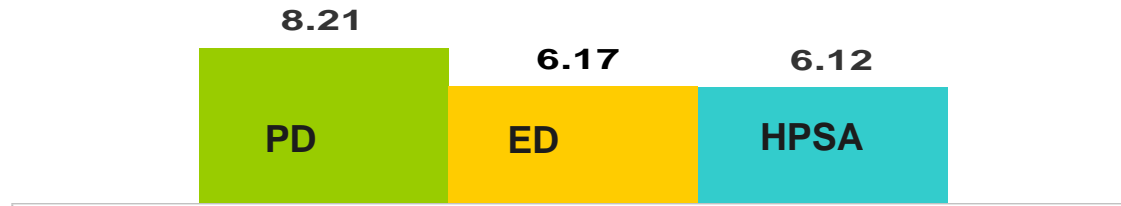
P/D Combined includes Protective/Diagnostic, Hospital/Sex Abuse and Ed. Neglect Units; Training Units are not included.

Average Caseload by Unit Specialization – Aug. 13, 2011

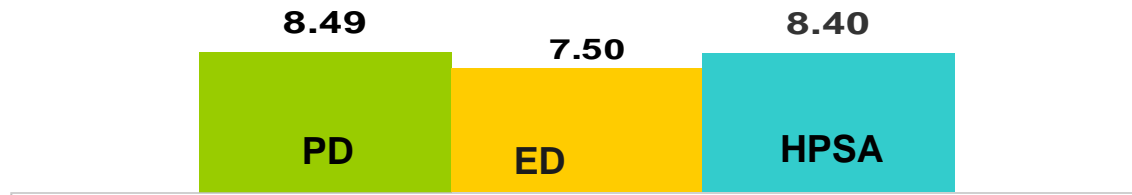
Citywide



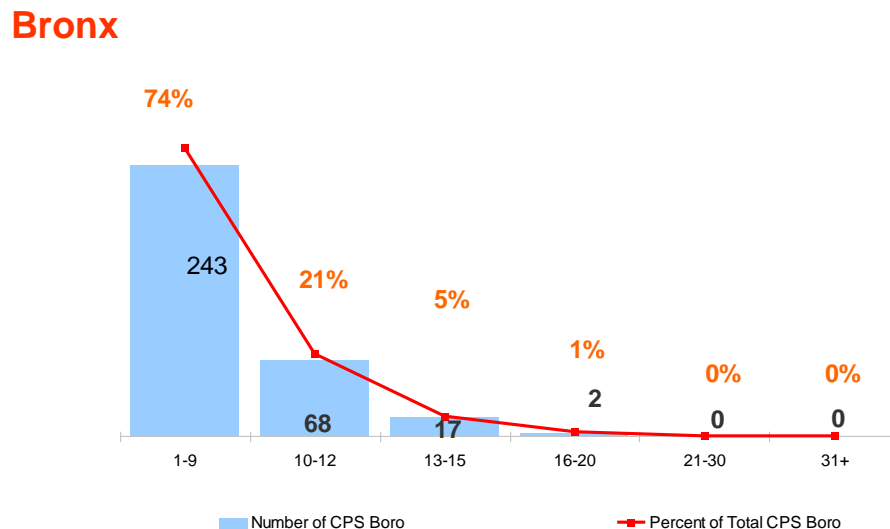
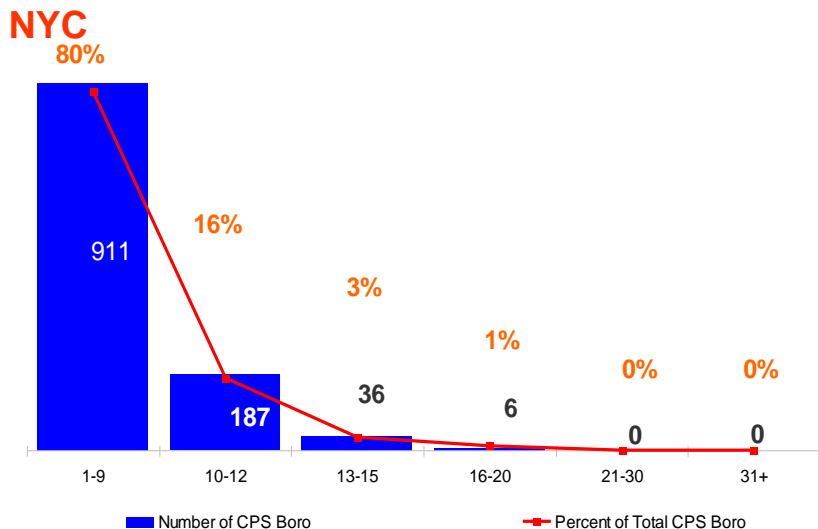
Bronx



BX Zone D



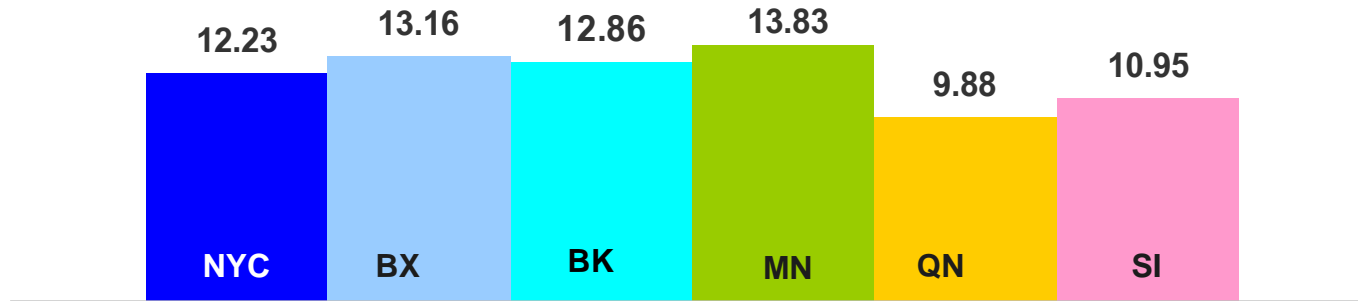
CPS Caseload Dispersion - Aug. 13, 2011



Bronx – All Zones

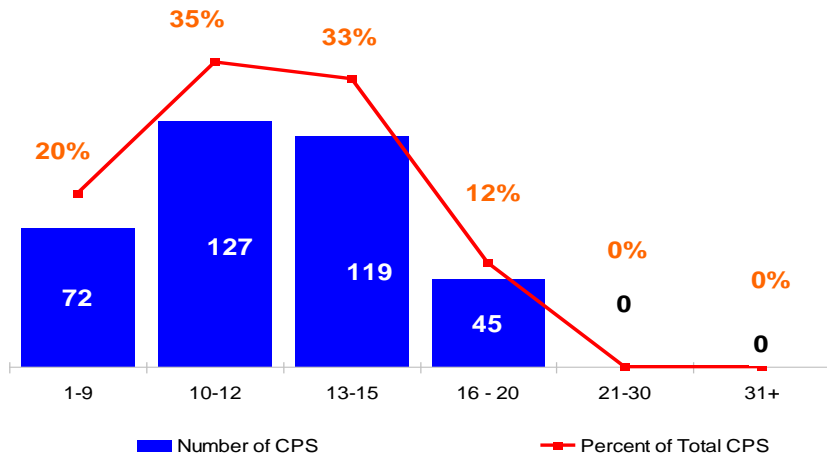
Zone	Total Cases	No Of Staff With Cases	Caseload Average	Caseload Dispersion											
				1-9		10-12		13-15		16-20		21-30		31+	
				#	%	#	%	#	%	#	%	#	%	#	%
A	530	63	8.41	38	60%	18	29%	6	10%	1	2%	0	0%	0	0%
B	450	69	6.52	62	90%	7	10%	0	0%	0	0%	0	0%	0	0%
C	559	69	8.10	46	67%	20	29%	3	4%	0	0%	0	0%	0	0%
D	482	58	8.31	42	72%	9	16%	6	10%	1	2%	0	0%	0	0%
E	539	71	7.59	55	77%	14	20%	2	3%	0	0%	0	0%	0	0%

Average FSU Caseload by Borough – Aug. 13, 2011

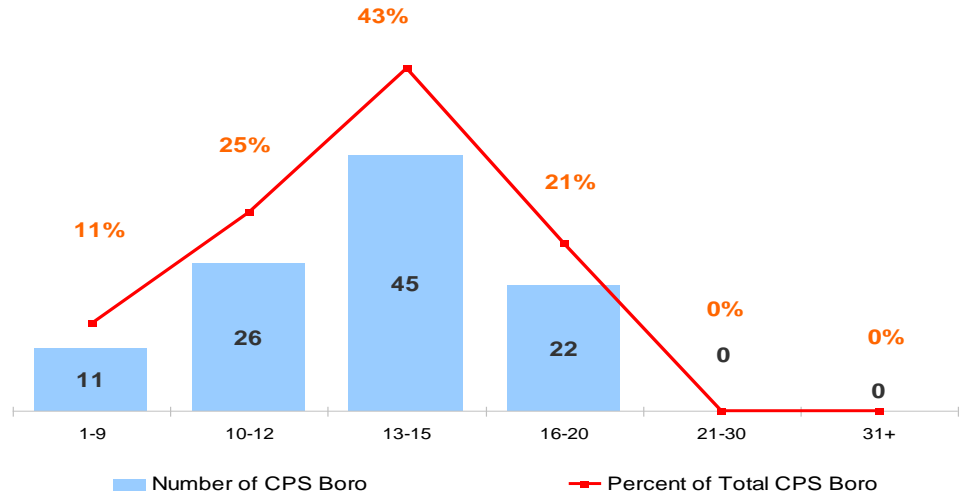


CPS FSU Caseload Dispersion - Aug. 13, 2011

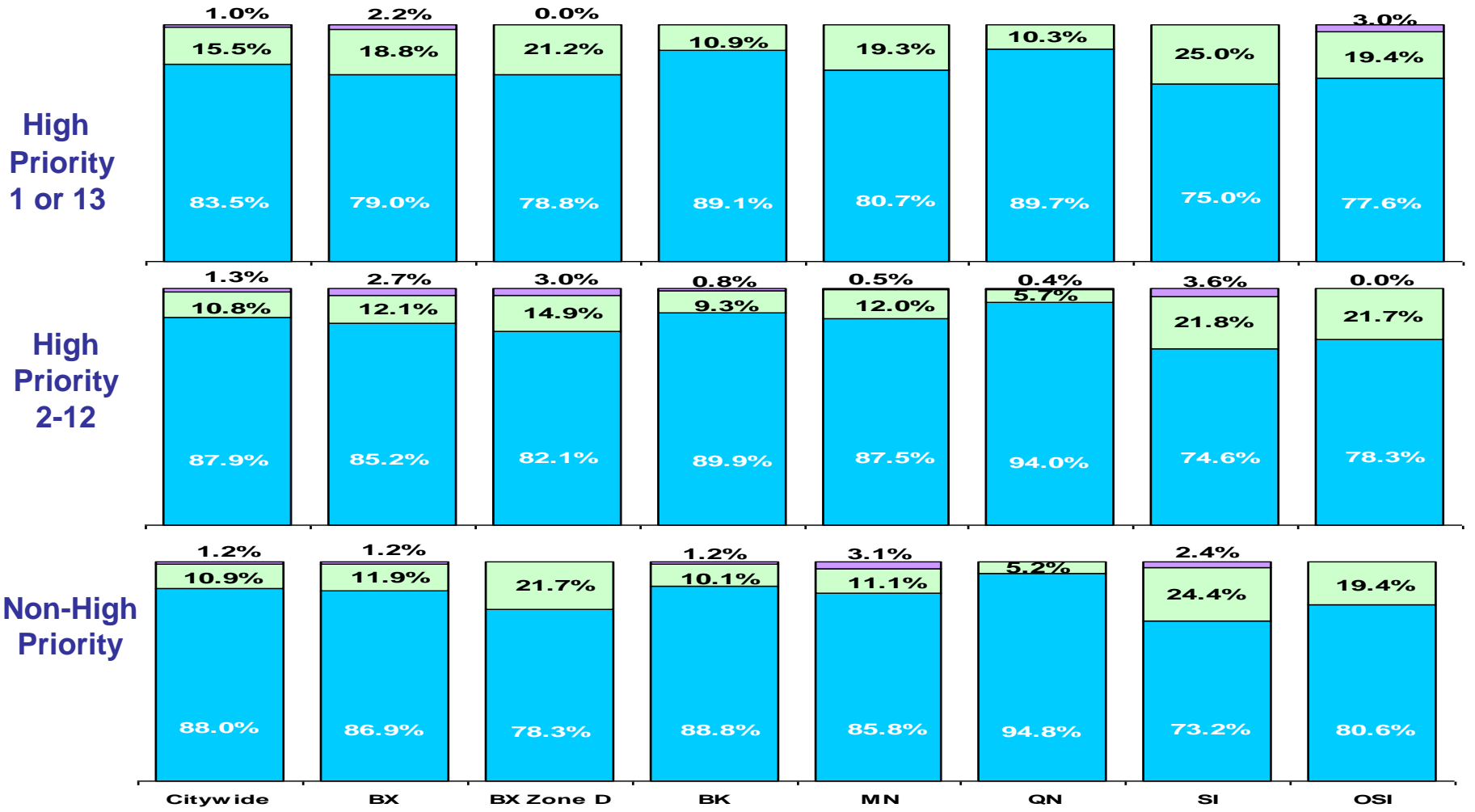
NYC



Bronx



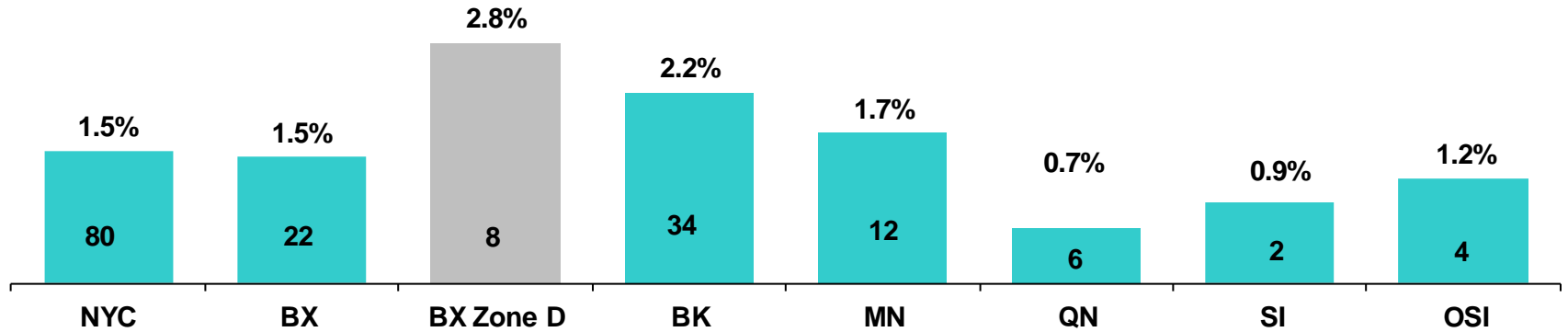
7 Day Safety Assessment Approvals, Intakes – Jul. 3 – Jul. 30, 2011



■ Approved on time
 ■ Not submitted on time not approved on time
 ■ Submitted on time not approved on time

Intakes	Citywide	Bronx	BX Zone D	Brooklyn	Manhattan	Queens	Staten Island	OSI
Total High Priority 1 or 13	516	138	33	147	57	87	20	67
Total High Priority 2 -12	1327	372	67	375	184	281	55	60
Total Non-High Priority	1170	327	60	338	162	230	41	72

Investigation Conclusions - All Open Investigations, Aug. 14, 2011

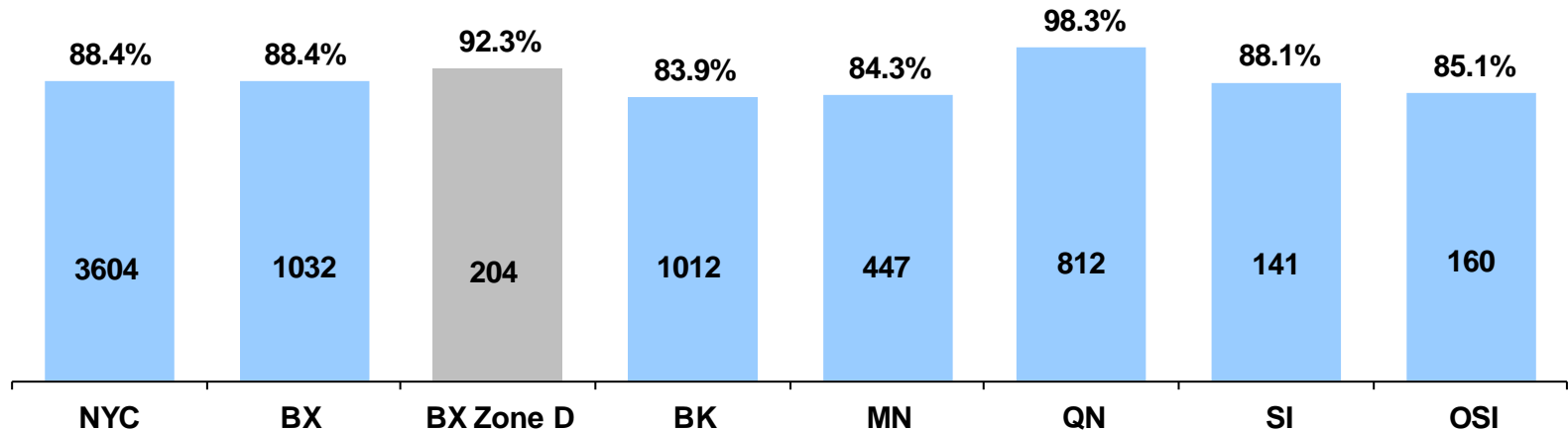


Note: The bars represent percent of overdue investigations.

Percent Overdue

	NYC	BX	BX Zone D	BK	MN	QN	SI	OSI
8/7/11	2.0%	2.5%	3.6%	2.7%	1.7%	0.5%	2.7%	0.6%
7/31/11	1.7%	1.7%	1.7%	2.6%	2.0%	0.2%	1.9%	1.2%
7/24/11	2.0%	1.8%	2.5%	2.7%	2.4%	0.5%	3.6%	2.1%

Investigations Completed on Time – Start Dates Apr. 18 – May. 15, 2011



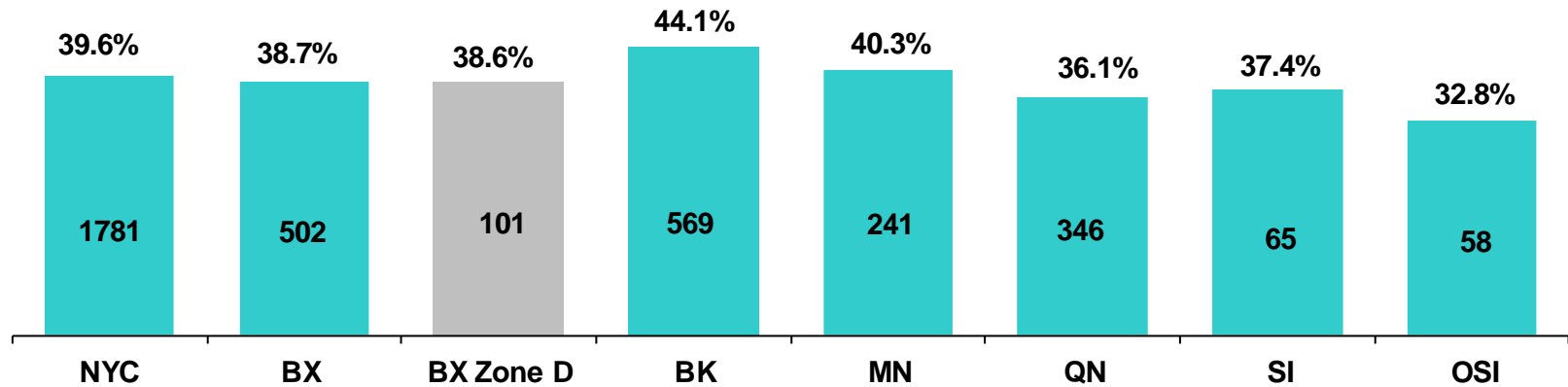
Percent of Investigations Completed Within Specified Time Frames

Days to Completion	NYC	BX	BX Zone D	BK	MN	QN	SI	OSI
0-60	88.4%	88.4%	92.3%	83.9%	84.3%	98.3%	88.1%	85.1%
61-65	9.3%	10.1%	6.3%	11.4%	13.6%	1.6%	10.6%	11.2%
66-70	1.1%	0.9%	0.9%	1.9%	1.3%	0.0%	1.3%	0.5%
71-80	0.9%	0.5%	0.5%	1.9%	0.4%	0.1%	0.0%	2.1%
81-90	0.2%	0.0%	0.0%	0.5%	0.0%	0.0%	0.0%	0.5%
More than 90	0.2%	0.0%	0.0%	0.4%	0.4%	0.0%	0.0%	0.5%
Total Investigations	4077	1167	221	1206	530	826	160	188

Last Childstat session for BX Zone D on Apr. 7th : **88.7%** investigations completed on time

*Bars represent percent of investigations completed on time

Indication Rates - Intake Start Dates May 19 – Jun. 15, 2011



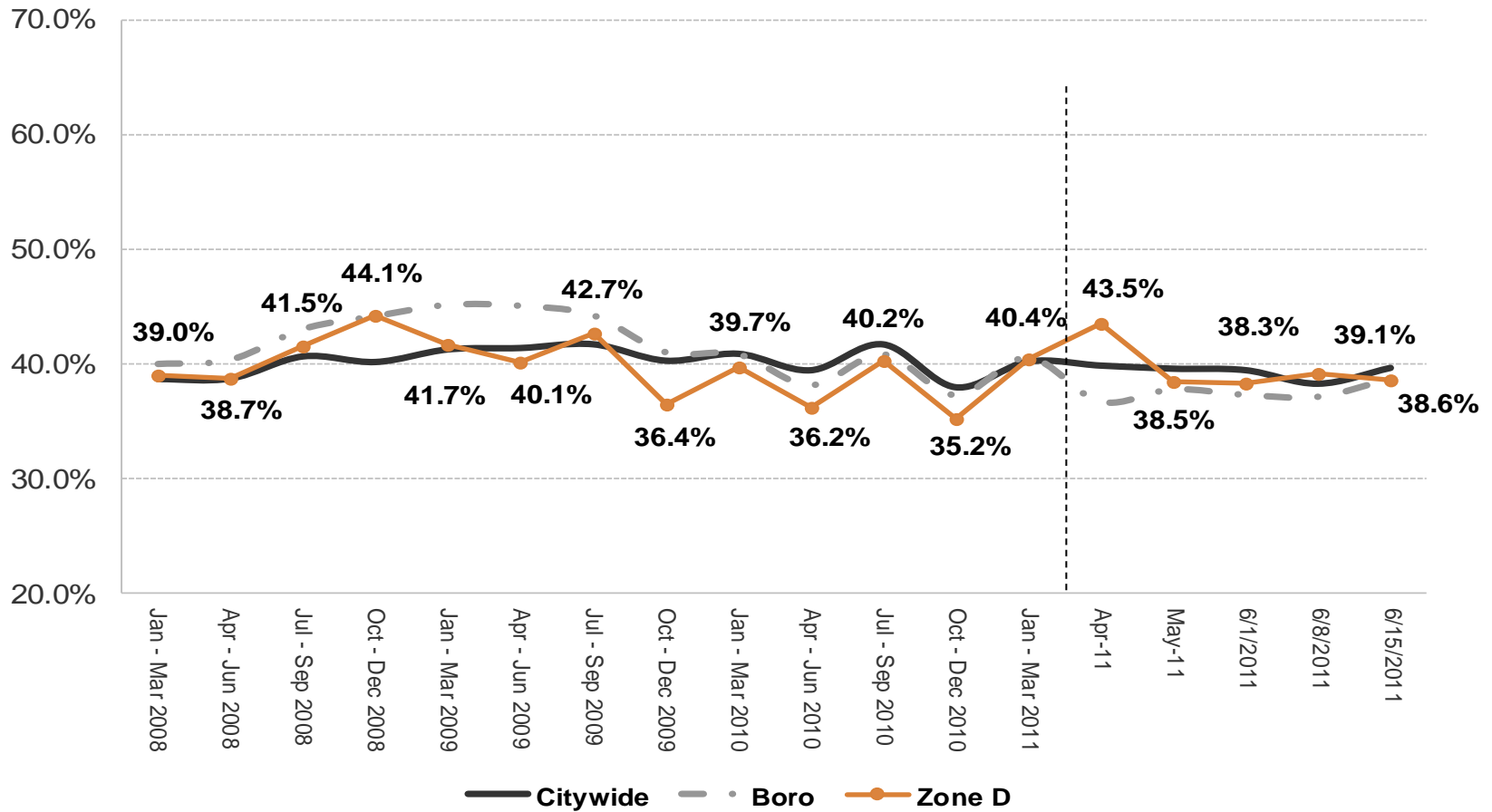
Bronx - All Zones

<u>Zone</u>	<u>Total INV</u>	<u>Unfounded</u>		<u>Indicated</u>		<u>Open INV</u>	
		#	%	#	%	#	%
A	254	149	59.60	101	40.40	3	1.18
B	255	145	57.31	108	42.69	2	0.78
C	264	172	66.15	88	33.85	4	1.52
D	269	161	61.45	101	38.55	7	2.60
E	278	170	62.04	104	37.96	4	1.44
Borough Total	1320	797	61.35	502	38.65	20	1.52

Note: Open Investigations are not included in the calculation of Indicated and Unfounded rates.

*Bars represent percent of indicated investigations.

Indication Rate Trend – Bronx - Zone D, 1st Quarter 2008 – Jun. 15, 2011

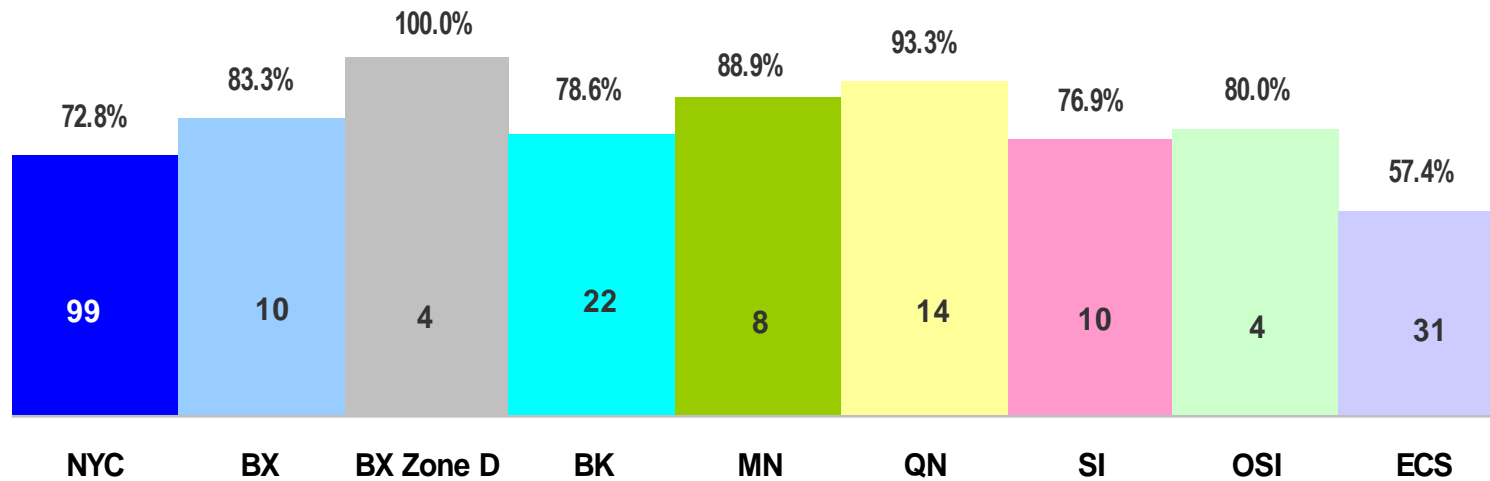


BX Zone D –
 4 Wk. Period Ending:
 Jun. 16, 2010 – 32.0%
 Jun. 17, 2009 – 42.9%
 Jun. 18, 2008 – 41.8%

Last Childstat session for BX Zone D on Apr. 7th: **40.4%**

Instant Response Team Cases – Jul. 10 – Aug. 6, 2011

IRT Joint Interviews with Children (Number and Percent)



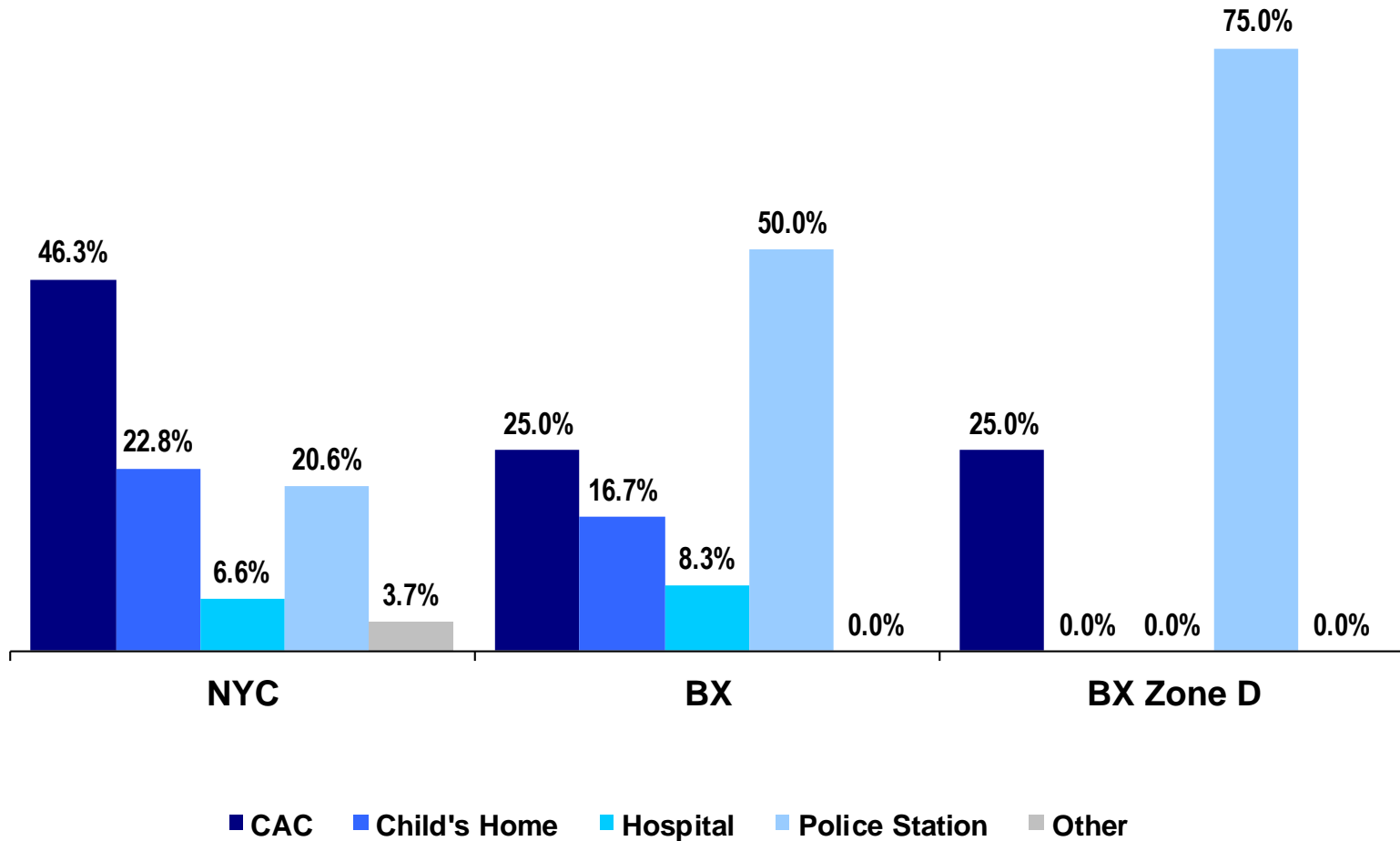
	NYC	BX	BX Zone D	BK	MN	QN	SI	OSI	ECS
Total Interviews w/Children*	136	12	4	28	9	15	13	5	54
Total Cases	225	25	5	36	11	22	13	7	111

*Total number of children interviewed does not include children too young to be interviewed, children that could not be located, or children involved in cases where there are no surviving siblings.

Last Childstat session for BX Zone D on Apr. 7th: **100%** investigations completed on time

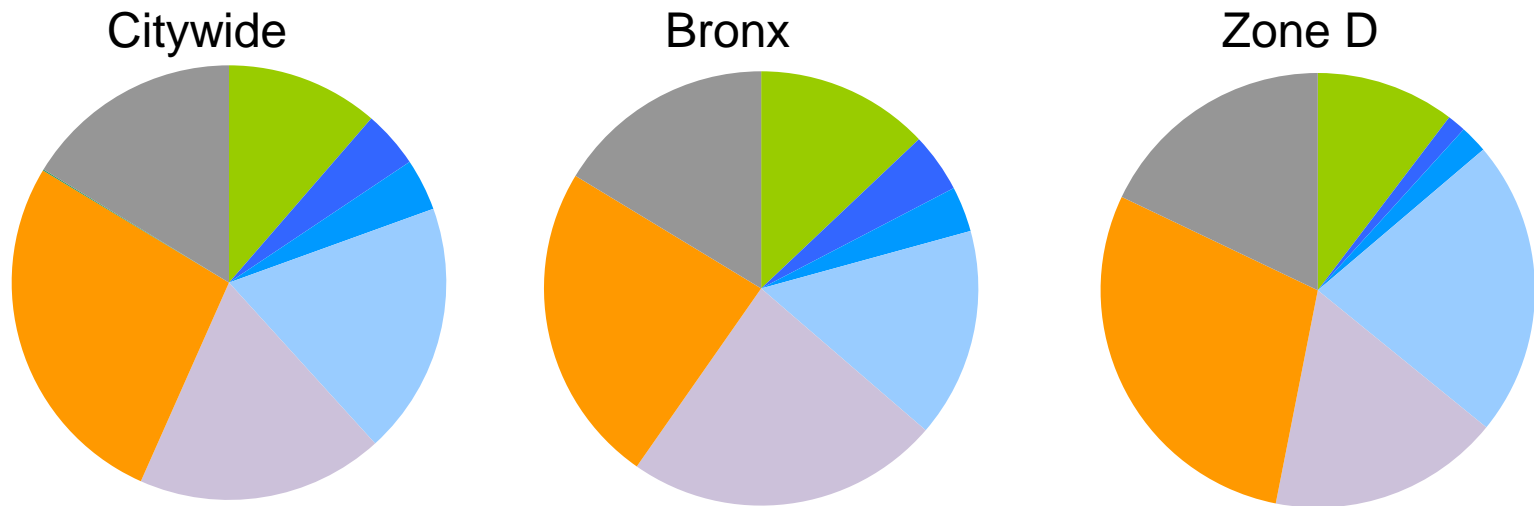
Instant Response Team Cases – Jul. 10 – Aug. 6, 2011

Interview Location



'Other' includes School, ACS office and other locations.

Service Outcome of Indicated Cases, Investigations Closed – May 2011**



Foster Care	259	11.4%	88	12.9%	15	10.3%
FSU	97	4.3%	30	4.4%	2	1.4%
FSU w/ Preventive	88	3.9%	23	3.4%	3	2.1%
Preventive Only	428	18.8%	106	15.6%	32	22.1%
Open FSS, No Services	419	18.4%	159	23.4%	25	17.2%
Referred to CBS	615	27.0%	163	24.0%	42	29.0%
Pending*	2	0.1%	0	0.0%	0	0.0%
No Services	371	16.3%	111	16.3%	26	17.9%
Total	2279		680		145	

*Pending services are cases where the investigation has been completed with an indicated finding, but where services, if any, have yet to be arranged.

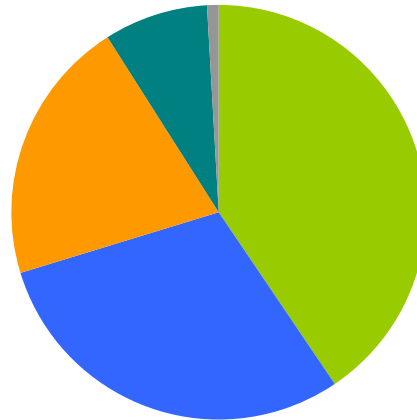
**This table does not reflect cases awaiting an available slot in a preventive agency.

Service Outcomes of Indicated Cases, Investigations Closed No Services – May 2011

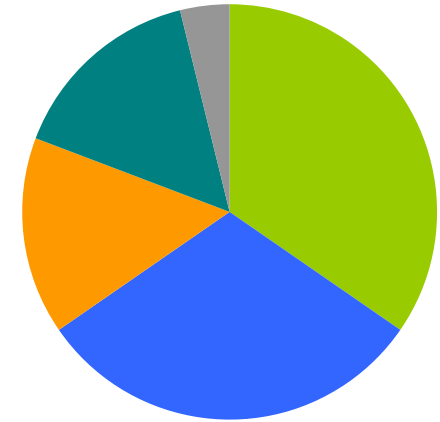
Citywide



Bronx



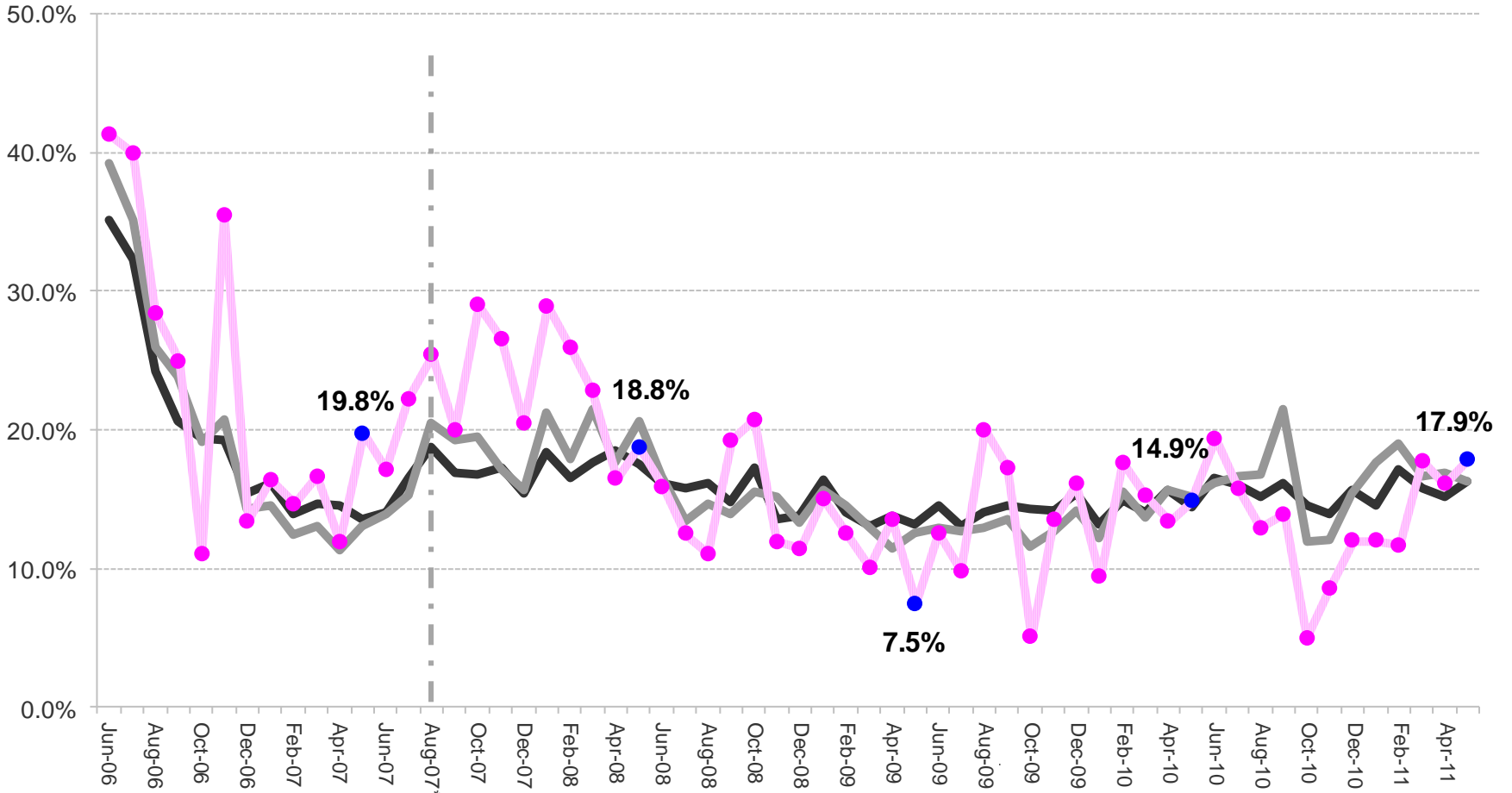
Zone D



		% No Services	% All Reports		% No Services	% All Reports		% No Services	% All Reports
No Services FSI Closed but no FSS	120	32.3%	5.3%	45	40.5%	6.6%	9	34.6%	6.2%
No Services Required	78	21.0%	3.4%	33	29.7%	4.9%	8	30.8%	5.5%
Services Refused	138	37.2%	6.1%	23	20.7%	3.4%	4	15.4%	2.8%
Unable to Contact/Moved out of Jurisdiction	34	9.2%	1.5%	9	8.1%	1.3%	4	1.4%	2.8%
No Services No Surviving children	1	0.3%	0.0%	1	0.0%	0.1%	1	3.8%	0.7%

Percent of Indicated Cases Closed-No Services

Bronx

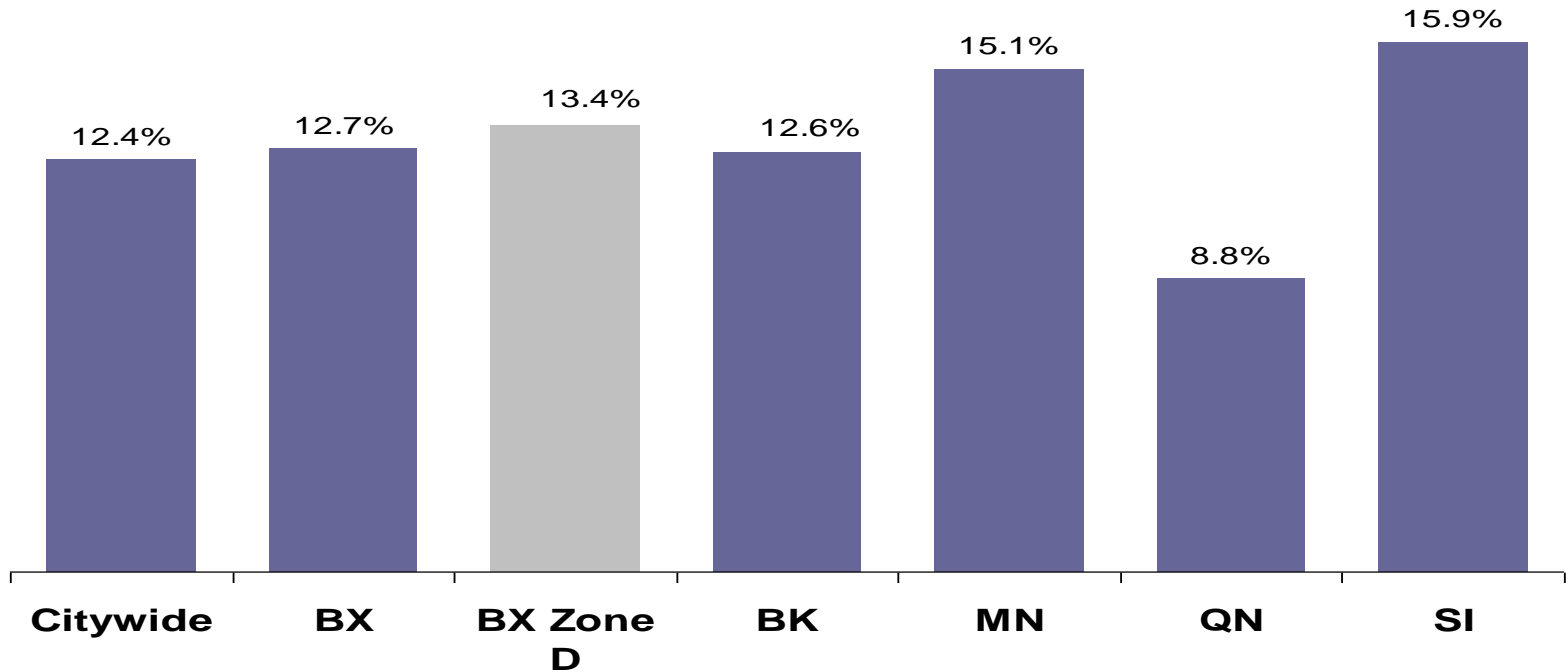


BX Zone D:
 May 2010 – 14.9%
 May 2009 – 7.5%
 May 2008 – 18.8%
 May 2007 – 19.8%

Citywide
 Boro
 Zone D

*New Service Outcome analysis methodology was implemented in August 2007.
 **Rezoning went into effect on 3/1/09

Percent of Cases* with an Indicated Investigation in November 2010 and a Repeat Indicated Investigation Within Six Months**

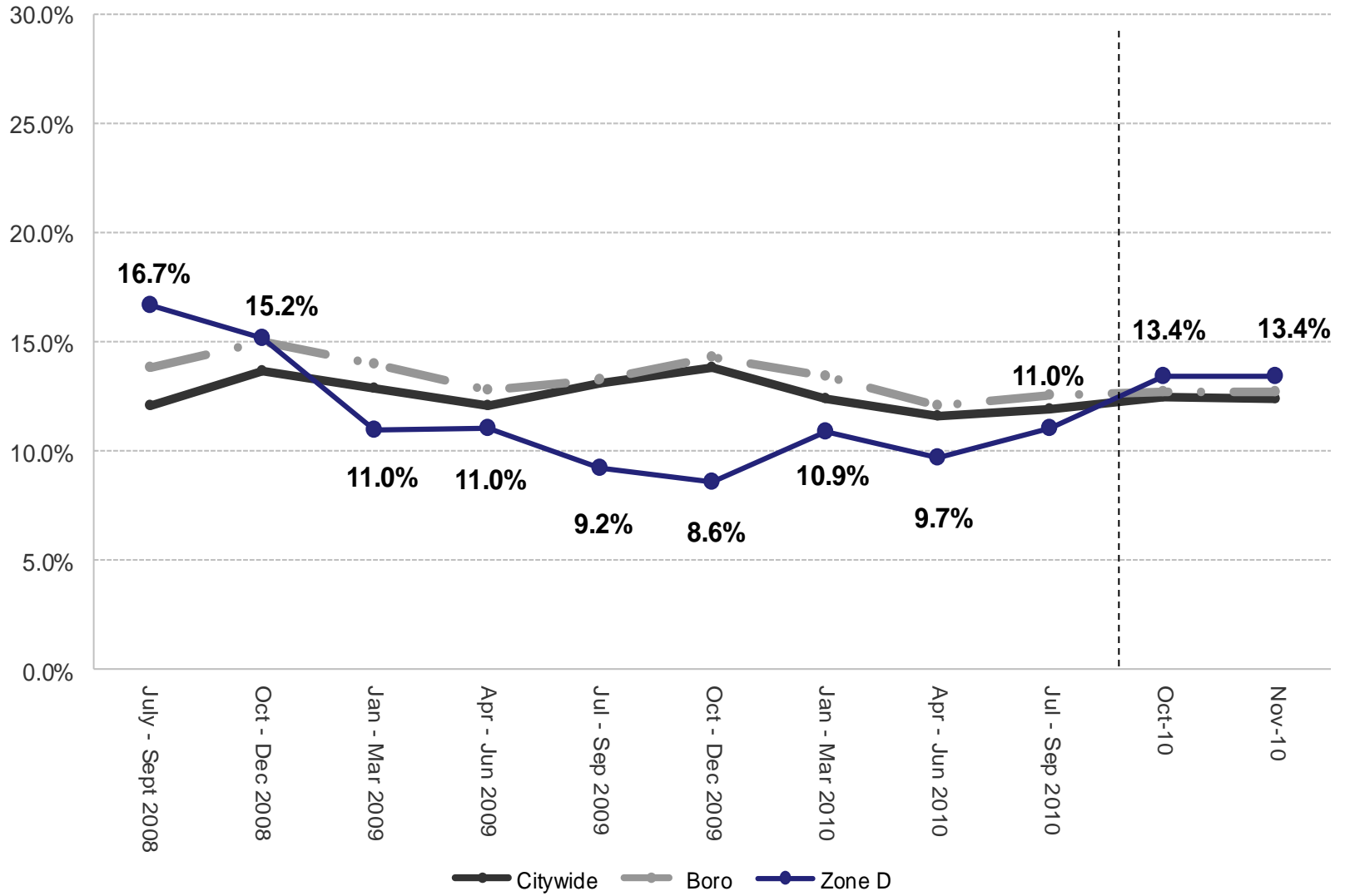


	Citywide	Bronx	BX Zone D	Brooklyn	Manhattan	Queens	Staten Island
Number of Cases with Indicated Investigations	1545	432	82	538	212	294	69
Number of Cases with Repeat Indicated Investigations	192	55	11	68	32	26	11

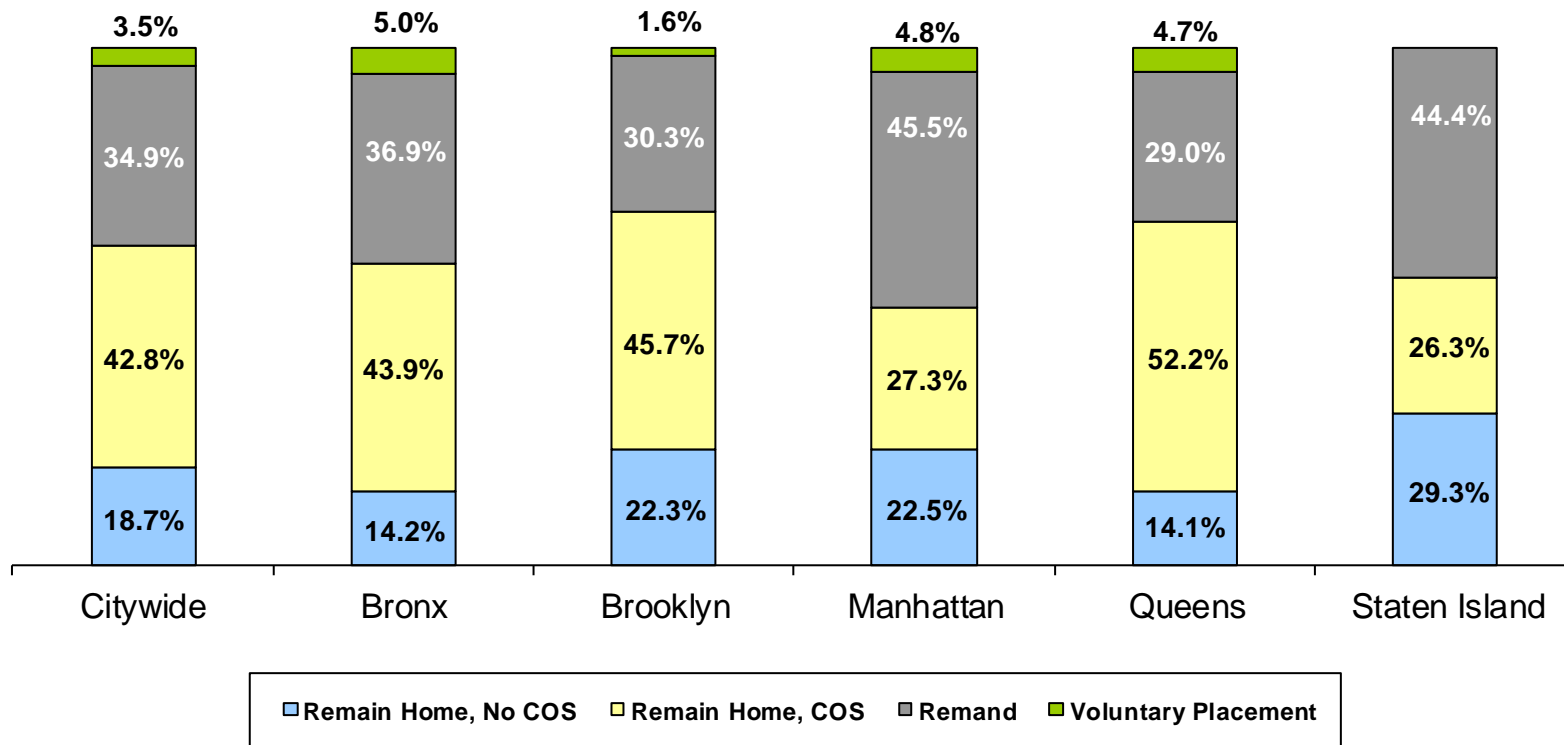
*A case is said to have an indicated repeat investigation if any one of the children, including children with no role, had an indicated repeat investigation within 6 months of the close of the initial investigation.

**Initial indicated investigation closed and followed by another indicated investigation within six months

Repeat Maltreatment Trends – Bronx



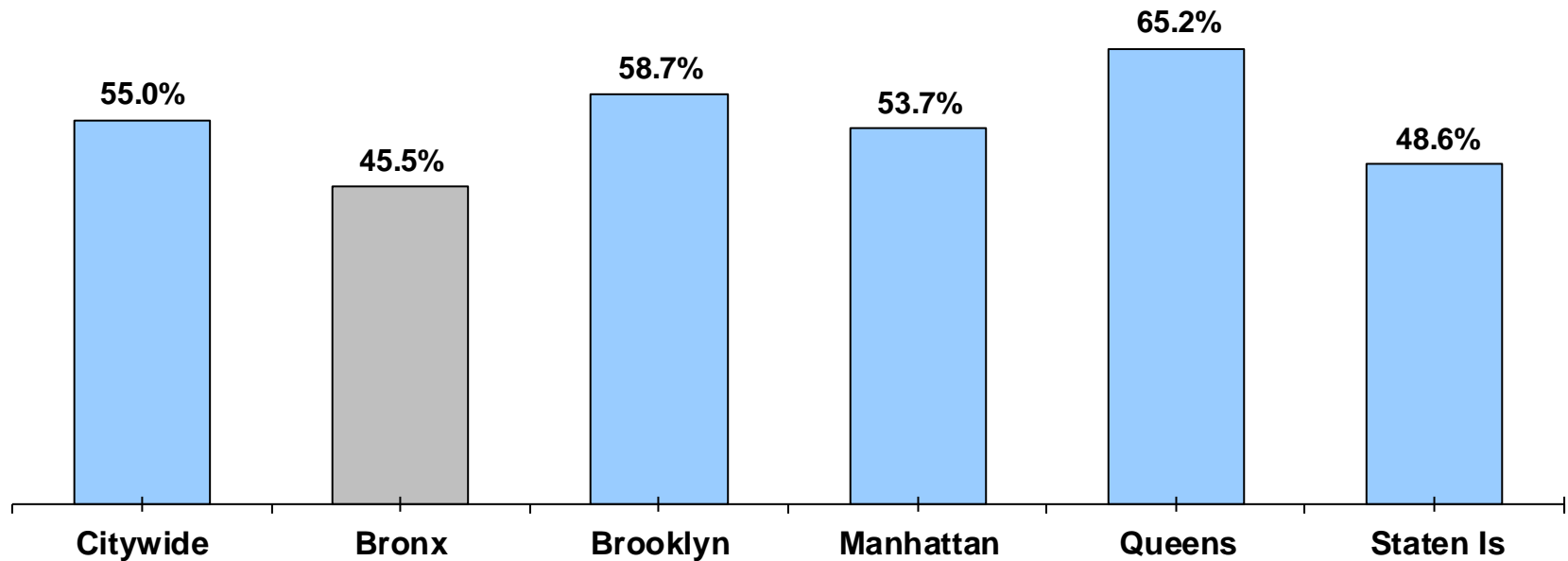
Child Safety Conference Recommendations*, June 2011



	Citywide	BX	BK	MN	QN	SI
# of Conferences	804	250	259	114	142	39
# of Focus Children	1644	556	547	187	255	99
# of Focus Children Remain Home, COS	704	244	250	51	133	26
<i>% to Respondent Parent</i>	58.4%	61.1%	64.8%	72.5%	35.3%	61.5%
<i>% to Non-Respondent Parent</i>	30.0%	31.1%	18.0%	19.6%	54.9%	26.9%
<i>% to Other/Kin</i>	11.6%	7.8%	17.2%	7.8%	9.8%	11.5%

*The percent distributions of recommendations are based on recommendations made for each individual focus child.

Percent of FSU Cases with 2 or More Face to Face Visits Where at Least One is in the Home*, June 2011

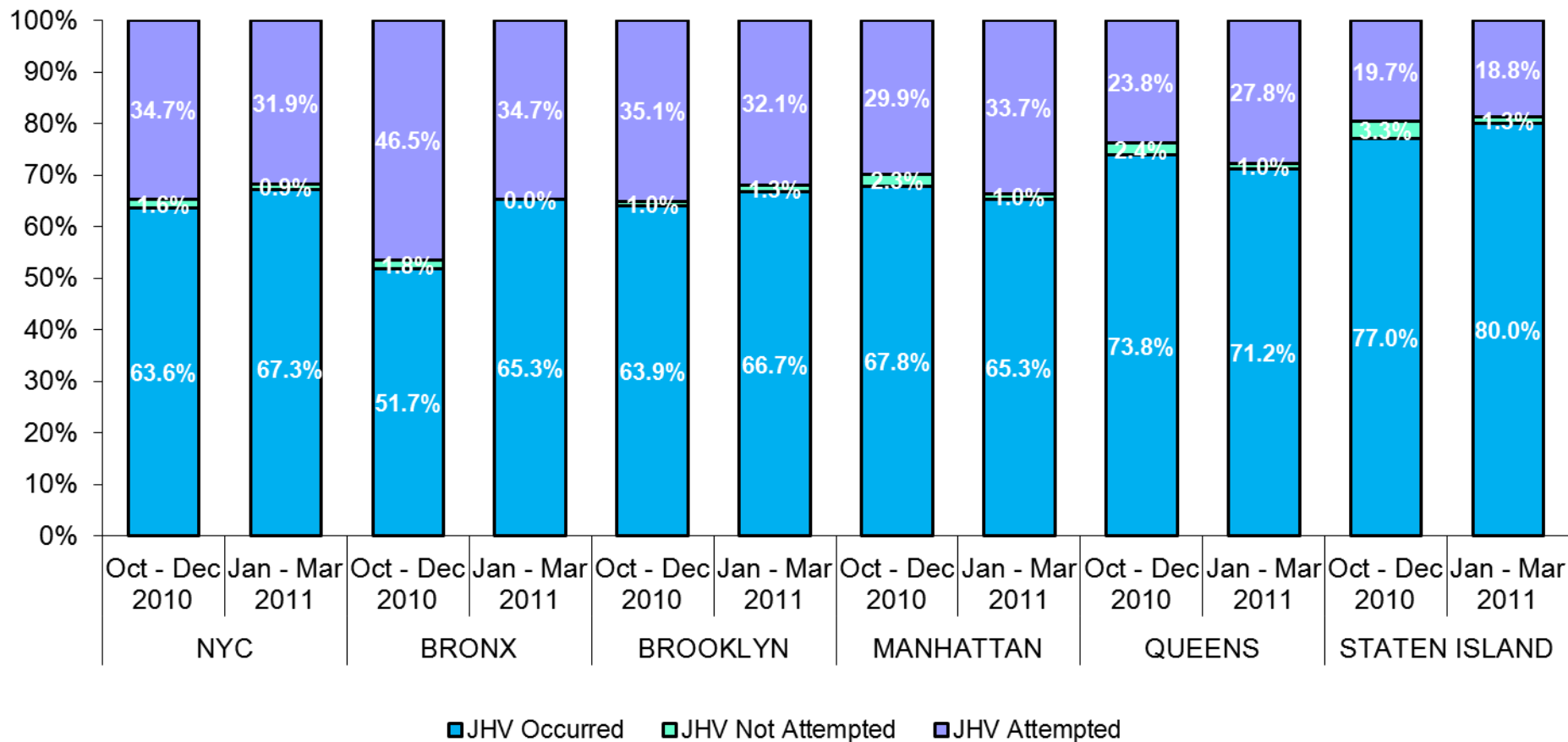


	Citywide	Bronx	Brooklyn	Manhattan	Queens	Staten Island
2 or More Home Visits	2277	570	889	196	520	102
Total Cases**	4140	1252	1515	365	797	210

*Home is defined as case home, parent's home, or relative's home.

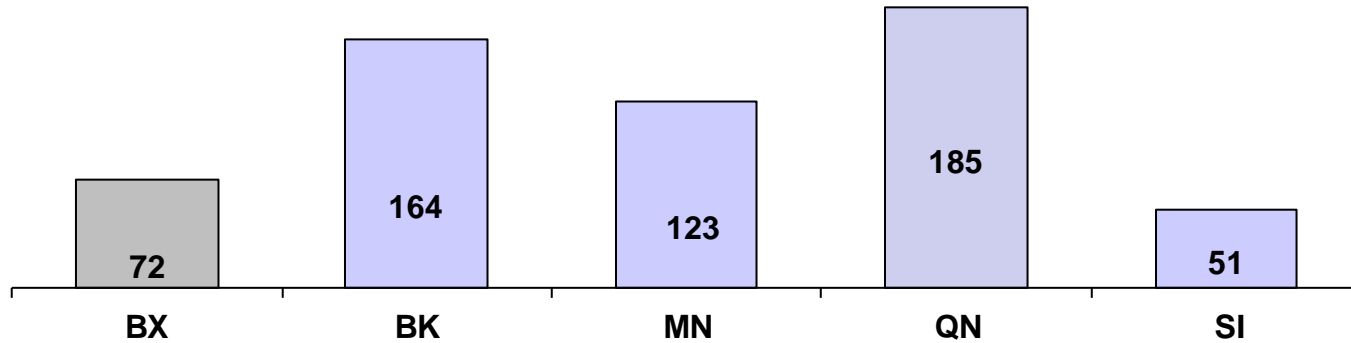
**Total cases includes cases that were open for the entire month. Cases opened or closed during the month are excluded.

Joint Home Visits (JHV) for ACS Referrals to GP and FRP Programs Where JHV was Required, October – December 2010 and January – March 2011

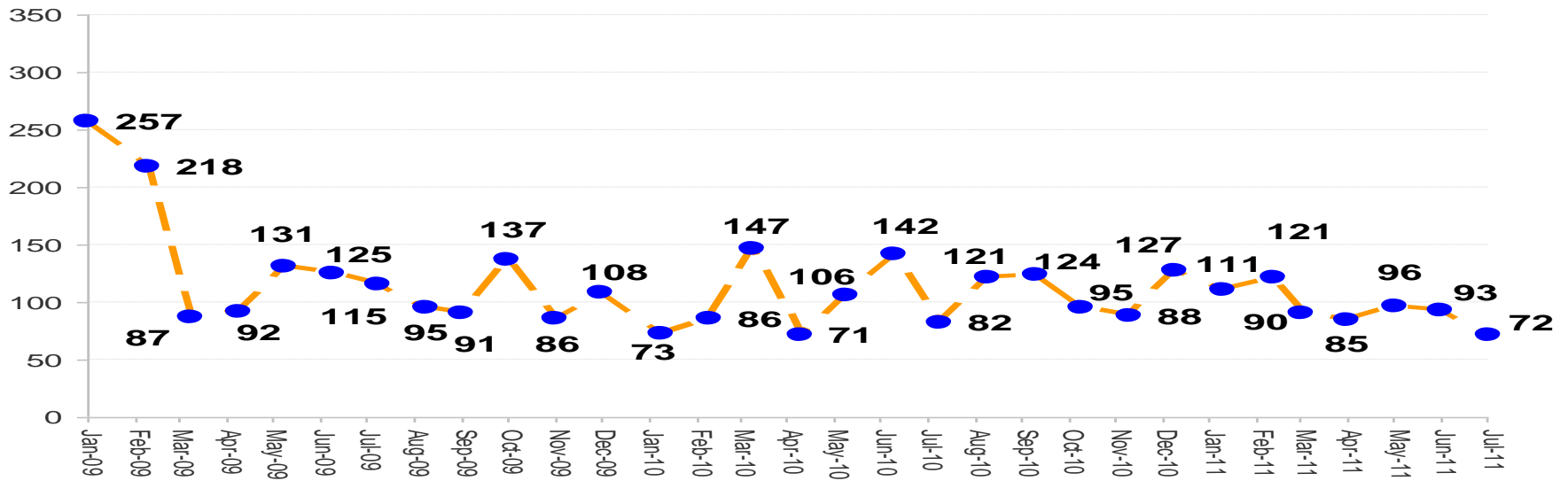


	NYC		Bronx		Brooklyn		Manhattan		Queens		Staten Island	
	Oct - Dec 2010	Jan - Mar 2011	Oct - Dec 2010	Jan - Mar 2011	Oct - Dec 2010	Jan - Mar 2011	Oct - Dec 2010	Jan - Mar 2011	Oct - Dec 2010	Jan - Mar 2011	Oct - Dec 2010	Jan - Mar 2011
Cases Requiring JHV	1,396	2,071	325	533	626	870	174	300	210	288	61	80
Cases Not Requiring JHV	47	92	10	9	14	22	1	0	22	61	0	0
Cases Withdrawn by DCP Liaison	140	189	29	42	83	97	9	16	12	26	7	8
Cases Referred by ACS	1,583	2,352	364	584	723	989	184	316	244	375	68	88

Court Ordered Investigation Openings – July 2011



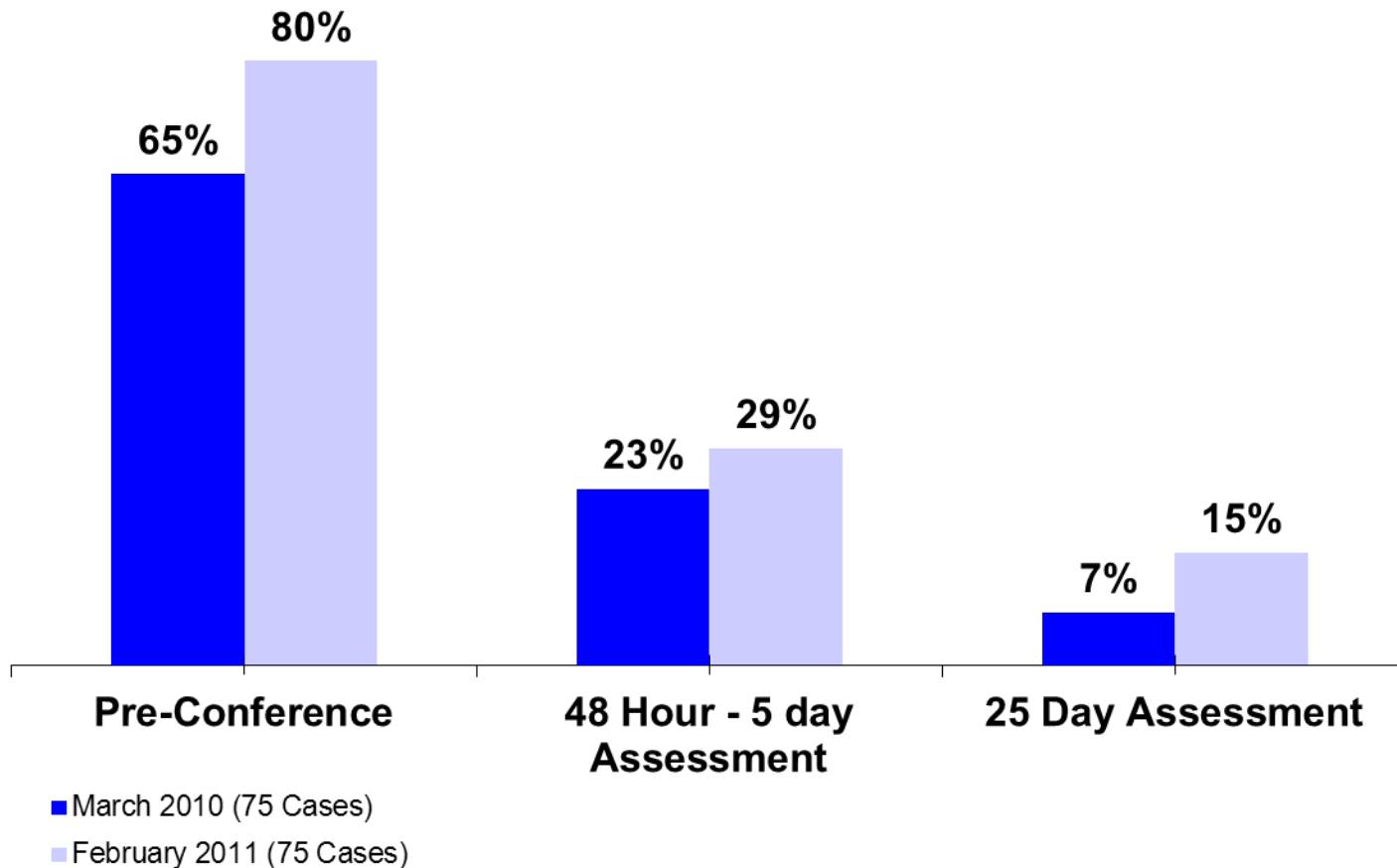
Court Ordered Investigation Openings – January 2009 – July 2011, BRONX



*COI data are derived from FCLS counts of self-reported data. These counts represent new COIs and requests for full updates on existing COIs where there was no current child welfare case in family court at the time the new COI or full update was ordered.

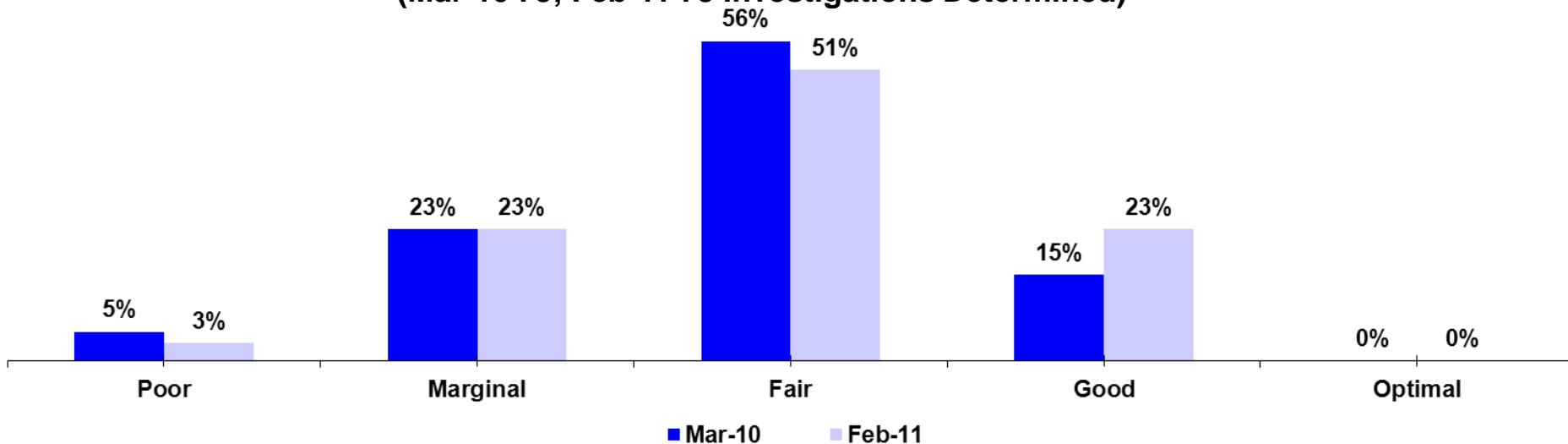
Documentation of Supervisory Guidance Given During Prescribed Time Frames

Bronx Field Office Determined Investigations



Quality of Fact-Gathering Interviews

Bronx DCP Case Review: Supervisory Oversight (Mar-10 75; Feb-11 75 Investigations Determined)



Total number of responses in each rating

	Poor	Marginal	Fair	Good	Optimal	Total
Mar. 10	15	65	158	42	0	280
Feb. 11	9	66	150	67	0	292

Indicators

The supervisor assisted the CPS with identifying themes and patterns from prior indicated and unfounded reports (if any), and/or the integration of the prior cases by the CPS was documented during the current investigation.

The supervisor ensured, when needed, that by the end of the investigation the CPS conducted interviews with all subjects of the report, the source, all children in and out of the household, collaterals and other persons named in the report.

The supervisor discussed with the CPS, and if necessary, guided the CPS on how to engage the family members or others involved in the case to elicit relevant facts and/or clarify information or inconsistencies to assess safety.

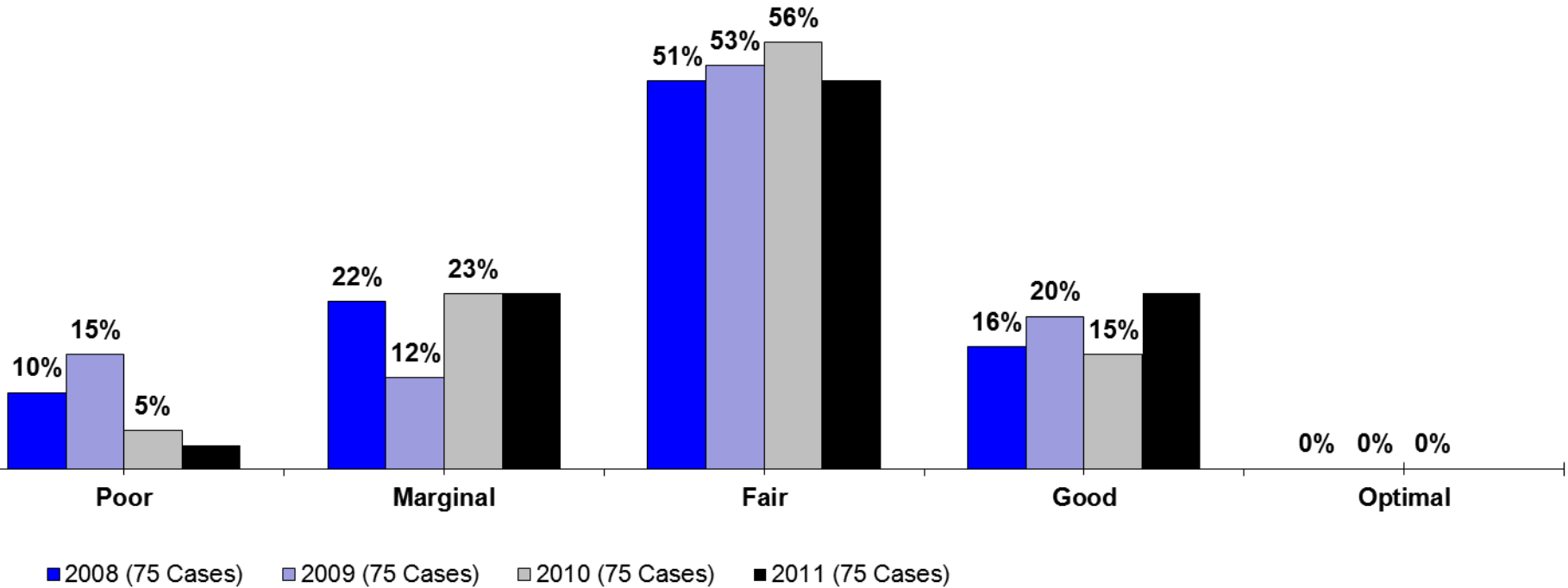
The supervisor discussed and, if needed, guided the CPS on how to probe for specific information that must be obtained to assess immediate and impending safety factors and future risk.

The supervisor guided the CPS, when needed, in determining the most appropriate location for conducting interviews so that the immediate safety of the child(ren) can be assessed and to ensure ongoing safety.

Quality of Fact-Gathering Interviews

Bronx DCP Case Review

2008 - 2011



Page left blank