



# “Not just a *Year of Social Justice Education*” September Calendar of Events

For further information and events, please visit [www.meac.org/NotJustAYear.html](http://www.meac.org/NotJustAYear.html)

Word of the month: “*Education*” | Video available for check out: “*The Lottery*”



## **LGBT Resource Center Back to School BBQ**

**Wednesday, September 2, 2015**

6 p.m. - 8 p.m.

Campus Creek Amphitheater  
Leadership Studies Building

## **Community and Cultural Harmony Week Kick-Off**

**Monday, September 14, 2015**

6 p.m. - 10 p.m.

Forum Hall  
Kansas State Student Union

## **Tony Jurich Lecture on Social Justice: Ruben Parra-Cardona**

*Building Bridges of Social Justice: Embracing  
Prevention Research to Support Latino/a  
Communities in the U.S. and Mexico*

**Thursday, September 17, 2015**

3 p.m. - 4 p.m.

Little Theater | Kansas State Student Union



## **“The Hunting Ground”**

Film screening and panel  
discussion

**Thursday, September 17, 2015**

Film screening: 6 p.m.

Panel discussion: 7:30 p.m.

Little Theater

Kansas State Student Union

## **Distinguished Educational Lecture Series: Dr. Sonia Nieto**

*Finding Joy in Teaching Students of Diverse  
Backgrounds: Culturally Responsive and  
Socially Just Practices in U.S. Classrooms*

**Friday, September 18, 2015**

9:30 a.m.

Forum Hall | Kansas State Student Union



## **Introductory Safe Zone Training**

**Monday, September 21, 2015**

11 a.m. - 1 p.m.

Leadership Studies Building  
Room 123

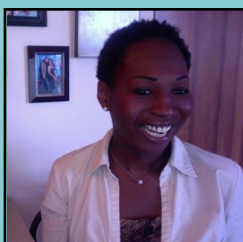
## **Lourdes Ashley Hunter:**

National Director of the Trans Women of  
Color Collective

**Tuesday, September 22, 2015**

7 p.m.

Forum Hall | Kansas State Student Union



## **Multicultural Pride Day**

**Friday, September 25, 2015**

8:45 a.m. - 2 p.m.

Kansas State Student Union  
*High school students, groups and  
parents spend a day exploring  
K-State.*

## **Kansas State University**

**Faculty Panel on  
Critical Pedagogy**

**Wednesday, September 30, 2015**

2:30 p.m. - 4 p.m.

Hemisphere Room  
Hale Library