

# The Benjamin Hills/Pleasant Valley

## NEIGHBORHOOD ASSOCIATION NEWS

MARCH/APRIL 2016

### Clean-up set for May 7

This spring, you can get your home and yard looking its best by getting rid of unwanted stuff.

The neighborhood clean-up is set for May 7, back to its traditional spring time slot after an Aug. 1 clean-up last year.

Five packer trucks and one tire truck will drive through our entire association area. Volunteers will pick up large bulky items and tires set out for disposal.

Please see the enclosed flyer for full details.

### Volunteers are needed!

If you can help with the clean-up, please be at St. Andrews Lutheran Church, 2555 Hyacinth Ln. by 7:30 a.m. on Saturday, May 7. Snacks will be provided for all helpers.



Clean-up ready- Packer trucks line up for the Aug. 1 '15 clean-up.

### Delivery routes open



Community service hours are up for grabs.

Five delivery routes for this newsletter are open, and your help is needed.

Delivering the newsletters takes less than an hour every other month. Can you--or your responsible teenager--commit to helping us six times this year?

See if there is an open route near you.

#### Route

21st	Benjamin to McLean	16 copies
Manhattan	Halstead to Bullinger	40 copies
Clarence	25th to 29th	47 copies
Charles	25th to 29th	38 copies
Hyacinth	Benjamin to dead end	38 copies

If you or someone you know would be interested in taking one of these routes, call John at 838-5730.

### Upcoming events:

**General Meeting-** Museum of World Treasures' Development Director Crystal Neihoff **6:30 p.m. Tues., March 1** at St. Andrews Lutheran Church, 25th and Hyacinth.

**Neighborhood Clean-up- May 7**

### Director to showcase museum's historical artifacts and exhibits

The Museum of World Treasures was founded in 2001 and has been located in the "Farm and Art" building in Wichita's Old Town since 2003.

Crystal Neihoff, newly appointed development director for the museum will talk about the unique collections and exhibits housed in one of Wichita's favorite downtown attractions.

Whether you have regularly studied all of the battlefield and military history exhibits and are on a first-name basis with Ivan the T.Rex or have never met him and the two Egyptian mummies housed in the museum, you are bound to learn something new.

Crystal has a degree in political science and a Master's in campaign management.

Prior to joining the Museum of World Treasures, Crystal served in the Marine Corps for eight years as an aviation command and control officer.

After her military service, Crystal provided fundraising consulting services for various political campaigns and organizations. Additionally, she has served on the Board of Directors for the Phoenix Patriot Foundation, a nonprofit dedicated to helping severely wounded veterans.



Crystal Neihoff,

### Mission:

The mission of the Association and the purpose for which it is organized shall be: In all its activities and relationships to seek to enhance the quality of life of the residents and to improve the appearance and safety of the neighborhood.

## Benjamin Hills/Pleasant Valley Neighborhood Association Highlights

By Jeanette Shepler, Secretary

The Jan 5 meeting began with President John VanWalleghen welcoming everyone, and encouraging people to sign up for helping with our neighborhood cleanup, which John is hoping will be in May. He explained that we first have to have enough volunteers before presenting the request to the city. He said anyone with questions can call him, at his phone listed on the back of the newsletter.

A speaker from the 21st and Amidon Fire Station, reported on number of fires, which so far in 2016, is 5, and in 2015, there were 199 fires. He advised everyone to make sure candles were put out before leaving home.

Officer Tejada gave statistics for reported crimes in beat 11, which in 2014 were 562, and in 2015, totaled 573. Beat 11 includes the part of the BHPV area that is south of 29th St. Officer Tejada was asked about establishment of Neighborhood Watch, and he said he could help with this, by holding a meeting with interested participants.

Mayor Jeff Longwell was introduced as our speaker by Tim Devine. Mr. Longwell explained that he started out in the Maize district with the city council for 12 years, and then was on the Wichita City Council for eight years.

Longwell says he believes we don't have to pay businesses to open here, and that we are not in the hotel business any more. It is his hope that the Hyatt Hotel will sell for 20 million, which is a little more than what it cost a few years ago, of 18 million and some change.

He talked about The Forum, which is already booked for various occasions, consisting of baseball, volley ball, and other activities. He said he was thrilled and shocked at what parents will do for their kids, in traveling for these activities.

Longwell mentioned the revenue from six Garth Brooks concerts held in early Dec., which brought in 70,000 people. He talked about the benefits of exporting, a hope for the future.

He talked about our water supply, and that our storage is 96 percent full, saying we get 90 percent of our water from Cheney Lake. By doing what we're doing now, we will have 50 years of water. The proposed cost of \$250 million for water expansion should only be \$60 million by recharging.

Mr. Longwell expressed confidence in Wichita's future, saying plans were being finalized for the new library.

Longwell referenced Charles Koch's televised quote when he asked, "What better place could you find to raise a family than Wichita? What better place for starting a business?"

Charlene VanWalleghen, number 17, was drawn for the door prize, and she received a gift card for Braum's.

Meeting ended at 7:40 p.m.

*What neighborhood events would YOU like?*

## Explore the possibilities

By Tim Devine, Vice President

Over the years residents have mentioned to me that it might be cool for our association area to have a variety of possible social events like (but not limited to): spring garden tours, an arts and crafts show of items created by association residents, etc.

Since I'd always respond by saying "it sounds like a good idea; go ahead and get it going", it never happened because we all know it would take a lot of work. But if a number of interested residents would like to explore some possibilities with me, maybe we could get an event or two off the ground.

If you're interested in talking about some possibilities and putting in some time and effort, contact me at [thdevine@gmail.com](mailto:thdevine@gmail.com) or 316-208-9590.

# NEIGHBOR'S

JOIN US AT OUR NEW ADDRESS

2315 W. 21 ST

(NEXT DOOR TO TACO GRANDE)

SAME GREAT FOOD, BEST VALUE IN TOWN

## Wichita's Original Gourmet Coffee Roaster

We are located just four blocks east of Old Town at Cleveland and Douglas, in the historic Mentholatum Building.

Please visit our new tea shop *Eli and Alan Teas For All Tastes* just next door. Wichita's finest selection of teas and accessories.

# SPICE MERCHANT

1300 E. Douglas • (316) 263-4121

Something Special Everyday

Spices • Tea • Gifts



Museum of World Treasures' Development  
 Director Crystal Neihoff 6:30 p.m. Tues.,  
 March 1 at St. Andrews Lutheran Church, 25th  
 and Hyacinth.

• RESIDENTIAL • COMMERCIAL

**ADVANCED  
 Pest Control L.C.**

Rod McBroom  
 838-5055 • cell 641-7998  
 www.advancedpestcontrolkc.com  
 3025 W. Benjamin Ct. • Wichita, KS 67204

• PEST CONTROL • TERMITE CONTROL  
 • POOL CHEMICALS & SUPPLIES

**Bucks**  
 Bar & Grill

1014 N. West St.  
 Wichita, KS 67203  
 316-945-2825

**HAPPY HOUR 3PM-7PM**  
 \$2.00 - WELL DRINKS  
 \$1.75 - DOMESTIC PINTS  
 \$3.00 - PREMIUM BOTTLES  
 \$2.00 - DOMESTIC BOTTLES  
 \$2.75 - LG DOMESTIC DRAW

**Rental Ranch**

• Sales • Service • Parts • Rental •

Briggs & Stratton • Kohler

**TORO** **STIHL** **SNAPPER**

www.rentalranchwichita.com

**The Rental Ranch  
 50<sup>th</sup>  
 ANNIVERSARY  
 Wichita, KS**  
 1966 2016

*Celebrating our 50th Anniversary  
 locally and family owned.  
 Thank you for making it possible!*

**(316) 838-4211**  
**1578 W. 29th Street North**  
**Wichita, Kansas 67204**

# We are the lawn crew in your neighborhood.

Chances are, you've seen us working on a lawn near you. That's because we live in this neighborhood and the majority of our customers do too.

When you need **quality lawn care** at an **affordable rate**, give us a call. But don't wait too long. Now scheduling for the 2016 season.



David Franklin, Owner  
 2319 Bullinger, Wichita, KS 67204  
 316-992-0601 or 316-838-3672  
*Quality work by the yard*



*Franklin Lawn Service, a family business serving the Benjamin Hills and Pleasant Valley area since 2003- Caleb, 20, Laurel, 15, Harrison, 18, Karen, and Dave (Wichita North High Class of 1985).*





## GREAT PLAINS NATURE CENTER

### Free Children's Programs

**Naturally Crafty -**  
**Every Tuesday 10 a.m.-12 p.m.**

Come and Go

We provide the materials and you get to make something to help you remember your trip to GPNC.

For all ages-children must be accompanied by an adult.

**Crittertales -**  
**Every Wednesday 11a.m.-11:30 a.m.**

Ms. Cathy will help us learn about animals in nature through stories, finger-plays, puppets, and other movement activities.

Mostly for preschool age kids, but all ages are welcome. Children must be accompanied by an adult.

**Little Nature Lovers -**  
**Every Thursday 9:30 a.m.-10:15 a.m.**

Explore the world of nature through crafts, games and children's literature. Lots of sensory experiences will develop understanding and enrich your child's appreciation of the great outdoors.

For ages 3-5 with a care giver.

*These programs do not require a fee or registration, however donations are always accepted and appreciated.*



**Phil Roney**  
Residential - Commercial  
Interior or Exterior Remodeling  
Powerwashing - Decks - Replacement Windows

775-3824 20 years' experience  
641-5234 cell pandgpainting.com References available



**“ Your neighborhood Realtor. ”**



**Art Busch**  
artbusch@plazare.com  
316-990-7039  
artbuschwichita.com



**COLDWELL BANKER**  
PLAZA REAL ESTATE

Each Office Is Independently Owned and Operated.



**SPRINGCLEAN LAUNDRY**  
CARPET • WIFI • AC  
TV • PLAYGROUND  
**WE NEVER CLOSE**

## 345 W 29th Street

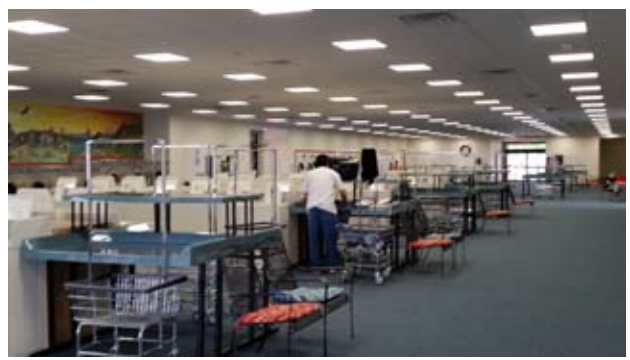
# NOW OPEN!

Springclean Laundry's newest location

- High-capacity machines
- Soft water
- Free WIFI
- Playground
- Free Coffee
- Attended 24 hrs. a day

## Full service drop-off now available

# Come see us!



General Meeting- 6:30 p.m. Tues., March 1 at St. Andrews, 25th and Hyacinth. Guest speaker Crystal Neihoff, Development Director from the Museum of National Treasures. Find out why Trip Advisor rates this as the #1 museum in Wichita!



**CORNERSTONE  
BIBLE CHURCH**

Join us on Sundays at 10:45 a.m. and 6:00 p.m. for Worship and Teaching from the Word!

Get involved in one of our many ministries! Inquire to learn about opportunities to fellowship with us.

For more info & other service times, please visit our website: [www.cornerstonewichita.org](http://www.cornerstonewichita.org)

2535 N. Amidon Ave., 67204 | 316.838.0400

Jerry Williams  
Owner



**Williams Painting & Home Improvement**

Interior & exterior painting, remodeling, fences, decks, roofing, siding, door and window installation

Phone (316) 686-5891      Cell: 806-0038  
Fax (316) 686-5891      Email: [jerryww1@juno.com](mailto:jerryww1@juno.com)



**Eaglewings Travels**

*"Soaring Beyond Your Travel Expectations"*

Colleen-travel expert/owner

[eaglewingstravels@gmail.com](mailto:eaglewingstravels@gmail.com) (email)  
[eaglewingstravel.us](http://eaglewingstravel.us) (website)

Like us on Facebook

Full Service Agency for all Your Travel Needs

**Call to Book: 316-214-5426**



**BARB'S DOG GROOMING**

2101 N. HYACINTH STREET  
WICHITA, KS 67203  
**(316) 729-8983**

ALL BREED GROOMING  
BARBARA CUSHENBERY,  
GROOMER & OWNER

SERVING THE BENJAMIN HILLS AND PLEASANT VALLEY AREA FOR OVER 20 YEARS



**Heck's  
LAWN CARE**

- ASK US ABOUT THE JERRY PACKAGE
- MOWING
- FERTILIZER
- WEED CONTROL
- OVER SEEDING & CLEAN UP
- GUTTERS CLEANED
- TREES, HEDGES TRIMMED & REMOVED

ESTABLISHED IN 1994

3242 W. 13TH SUITE 300      316-734-9592  
WICHITA, KS 67203      316-832-9033



# Sandpiper Healthcare and Rehabilitation Center

**More than ever, total well-being is a priority in our lives:**  
a healthy balance of body, mind and spirit. This is what we strive to provide.



Welcome to Sandpiper Healthcare and Rehabilitation Center, home of rehabilitation strength, health, and longevity. We are dedicated to serving the rehabilitative and medical needs of individuals disabled by illness or injury. We also specialize in caring for individuals in need of a brief respite or long-term care.

We are guided by the principle that quality healthcare is best achieved when we work together. If you are seeking short-term and/or rehabilitative services, we will focus on achieving the most successful functional outcome so that you can return home as quickly and safely as possible.

## Sandpiper Healthcare and Rehabilitation Center Offers the Following Amenities

- ◆ Aggressive Rehab Services with State of the Art Equipment
- ◆ Private Suites
- ◆ Internet Cafe and Wi-Fi
- ◆ Selective and room service menu's
- ◆ Accepting Medicare, Medicaid and all Managed Care Plans
- ◆ Long term care available



2013  
Silver Quality  
Care Silver  
Award Recipient



★ ★ ★ ★ ★  
Awarded 2014 5-star Gracious Dining  
Award by the Kansas Dietetic Association




**5808 W. 8th St. North,  
Wichita, KS 67212  
(316) 945-3606**

**Conveniently located at  
I-235 & W. Central  
[www.geneshcc.com/sandpiper](http://www.geneshcc.com/sandpiper)**



**Neighborhood Clean-up day: May 7**  
see page 1 for details



**UNDERHILL | REYNOLDS & ASSOCIATES**  
The Real Estate Professionals



**COLBY REYNOLDS**  
REALTOR®

OFFICE: 316-722-1400  
CELL: 316-558-2292

REALESTATEPROSOFWICHITA@GMAIL.COM  
WWW.UNDERHILLREYNOLDS.COM



of Wichita  
10300 W. Central  
Wichita, KS 67212



**goat britches**  
a this-n- that shoppe

We are a variety shoppe that repurposes, redoes and resells. We carry furniture, home decor, collectibles, original artwork, antiques, clothing, hand made items and more!



Come visit us in the DeFazio Center  
2724 N Amidon  
(316)570-1339  
Kirstin Shain

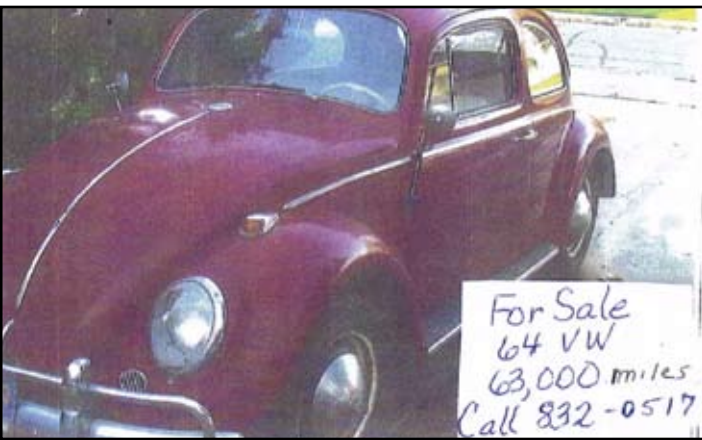
Hours  
Mon-Tue closed  
Wed-Sat 10am-7pm  
Sunday 1pm-6pm

MENTION THIS AD AND GET 20% OFF ANY ONE ITEM



**G. Knute Fraser**  
Attorney at Law

830 N. Main  
Wichita, Kansas 67203  
Ph: 316-265-3390  
Fax: 316-265-1303  
Credit cards accepted.

Thinking of making a move? Call Sherry




**Sherry Evans**  
Your Kansas Home Team  
Associate Broker, REALTOR®

Mobile: 316.650.9975  
Fax: 316.634.0089

RealtorSherryEvans@gmail.com  
www.RealtorEvans.com



**We don't brag about our claims service.**

**Terry Johnson, Agent**  
303 South Hillside  
Wichita, KS 67211  
Bus: 316-683-6571  
terry.johnson.gw5v@statefarm.com

**But 97% of our customers with claims do.\***

When you get State Farm® insurance, you get more than just the right coverage at the right price. You get the assurance that we'll be there when it matters most.

**GET TO A BETTER STATE™.**  
CALL ME TODAY.



\* Based on a 2008 internal State Farm Claims department national study. 1101210.2 State Farm, Home Office, Bloomington, IL

# Benjamin Hills/Pleasant Valley Neighborhood Association Board

John VanWalleghen, Pres.	838-5730
jvanwalleghen1@cox.net	
Tim Devine, VP, thdevine@gmail.com	208-9590 cell
Jeanette Shepler, Secretary	838-7599
Trish Hunter, Treasurer	
Carmen Gard, Advertising	838-4175
Nate Davis, Delivery Routes	640-0204
Lorenza Snyder	992-1673
Theresa Neal	871-4053

Benjamin Hills/Pleasant Valley Neighborhood Association  
2020 W. 21st. North PMB 201, Wichita, KS 67203-2107 (*Donated by the Mail Room*) or [tim@cityprintusa.com](mailto:tim@cityprintusa.com).

Boundaries for circulation: East by the Little Arkansas; west by I-235; south by the Arkansas River; north by the big ditch. Circulation is approximately 1,800. Published bimonthly.

<http://bhpvna.wix.com/bhpnva>  
Sandi Erwin, website administrator

To be included on neighborhood-wide email alerts, send your address to: [bhpnva@gmail.com](mailto:bhpnva@gmail.com)

## Helpful Numbers

Evergreen Neighborhood City Hall, 2700 N. Woodland, 67204  
Council Districts 5 and 6:

Martha Sanchez	<a href="mailto:msanchez@wichita.gov">msanchez@wichita.gov</a>	303-8042
Oscar Raymundo, aide	<a href="mailto:oraymundo@wichita.gov">oraymundo@wichita.gov</a>	303-8042
Janet Miller	<a href="mailto:JLMiller@wichita.gov">JLMiller@wichita.gov</a>	268-4331

**Community Policing Patrols** (our area is divided into two)

**North** (for residents north of 29th Street) **Beat 49**  
Officer Troy Bussard [tbussard@wichita.gov](mailto:tbussard@wichita.gov)  
3015 E. 21st, Wichita, KS 67214 350-3400


**West** (for residents south of 29th Street) **Beat 11**  
Officer Francisco Tejada [FTejada@wichita.gov](mailto:FTejada@wichita.gov)  
661 N. Elder, Wichita, KS 67212 350-3460

Sedgwick County	<a href="http://www.sedgwickcounty.org">www.sedgwickcounty.org</a>
City of Wichita	<a href="http://www.wichitagov.org">www.wichitagov.org</a>
Street lighting	Westar 1-800-544-4857
Street/Traffic Maintenance (Potholes)	268-4013
Storm Water Maintenance (Street flooding)	268-4498
Sewer Maintenance (Backups)	265-1300
Locate registered offenders	
<a href="http://www.icrimewatch.net/index.php?AgencyID=54309">http://www.icrimewatch.net/index.php?AgencyID=54309</a>	



Thanks for  
visiting our  
neighborhood  
locations:  
21st & Amidon  
13th & West

**i'm lovin' it**



2020 W. 21st St. N.  
Sweetbriar Shopping Center

UPS • FedEx • USPS  
Copies (B&W, color)  
**Mon-Fri 9 a.m.-6 p.m.**  
**Sat. 10 a.m.-2 p.m.**  
838-2844, 838-2249 fax

## Classifieds

**Critter Getter-** Wildlife Nuisance and Damage Control. GOPHERS and MOLES too! NADC: 152-2011 620-543-2649 ask for Rod.

**Grant Construction-** Building remodel, repair, handyman work or custom carpentry, done YOUR way. Creative quality in Wichita since 1975. Call Kelly at (316) 250-2582.

**Home Improvement-** Custom cedar fence gates, yard/garden entryways, arbors, trellises, arches, passageways. Design, build, and install. Reasonable rates. Tim Devine, retiree, 316-208-9590

**Whipstitch Mending-** Creative solutions for your mending and alteration problems. Desiree Widiger 838-9012.

**Widiger Carpentry-** Remodeling, decks, cabinetry, painting, trim work, siding and rain barrels. Class C. Res. License 2992. Call Dale 838-9012.

**Wallpaper** - I enjoy and am good at hanging paper and borders, with a lifetime of experience. Reasonable rates. Tim Devine, retiree, 316-208-9590.

**To advertise in this newsletter**, contact Carmen Gard, 838-4175 or [cdgard@cox.net](mailto:cdgard@cox.net). Business card ads-\$30 per issue, classifieds-\$15. Mail payment before April 5 for the May/June 2016 issue to: BHPV Neighborhood Assoc., 2020 W 21<sup>st</sup> N, PMB 201, Wichita KS 67203.