

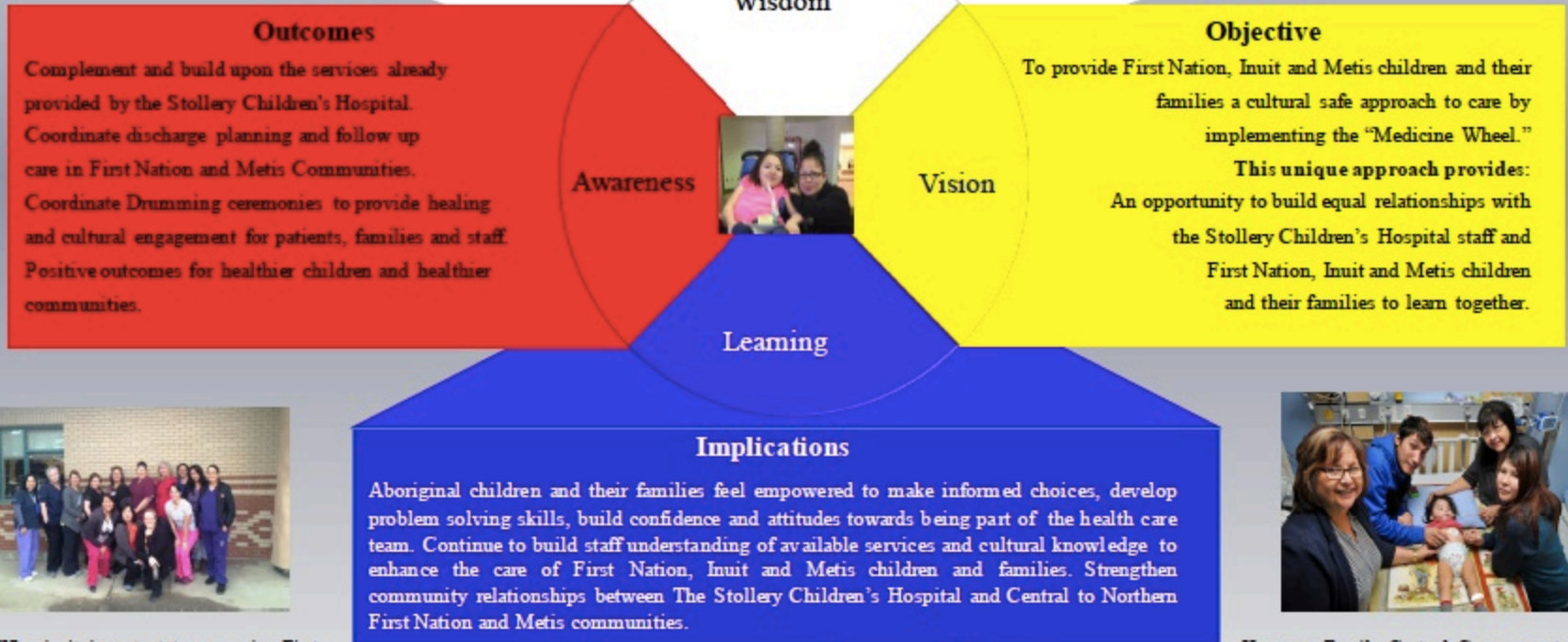
Aboriginal Child Health Nurse Coordinator

Sherri Di Lallo, MN, RN



Future Direction

Expanding Family Centered Care for First Nation, Inuit and Metis Families: Aboriginal Child Health Nurse Coordinator to become a permanent position, gather information and continue to build a cultural safe environment through knowledge and practice, meetings with First Nation and Metis health directors, homecare nurses and transportation coordinators. Travel to northern communities to connect with community health care providers via Teddy Bear Fairs.



Why is it important to recognize First Nation, Inuit and Metis families as valued members of their children's care team?



How can Family Centred Care support staff and physicians in caring for First Nation, Inuit and Metis families?

