

Rhode Island Alliance for Healthy Homes



Why are green and healthy homes important?

- Billions of US taxpayer dollars are lost annually on *unhealthy* homes:
 - \$43.4B = lead poisoning
 - \$20B = asthma-related illness
 - \$19B = trip and fall injuries for seniors
- 14 million missed school days from asthma each year
- Low-income households spend 14% of income on energy vs. 3.5% for other households

RIAHH Leadership:



Green & Healthy Homes Initiative | Rhode Island

➤ **Nearly 9 Million US families live in unhealthy homes.**

How can we make homes greener and healthier in Rhode Island?

Launched in 2014, the Rhode Island Alliance for Healthy Homes is an 80-member coalition that aligns, braids and coordinates information, resources and services to improve the health, safety and energy efficiency of all Rhode Island homes.

RIAHH delivers the coordination of people and agencies, a process for effecting positive change and the tools to implement measurable solutions through existing infrastructure.

- **Data:** Consistent data collection, management of open-sourced data, resources and tools
- **Action:** Actionable plans that result in measurable community impact (i.e. health outcomes, energy cost savings, health care cost savings, education cost savings)
- **Resources:** Mechanisms for leveraging, braiding and increasing healthy housing resources
- **Learning:** Collegial learning environment and networking
- **Workforce:** Clearing house and coordination of professional skills development for a better organized, trained and qualified healthy housing workforce
- **Communications:** Communications platform to better inform the public about specific healthy housing issues
- **Measurable Impact:** Measurement and public sharing of progress and impact
- **Policy Creation:** Support for smart healthy housing legislation and policies



➤ **Meaningful change is possible when organizations work together, using data and coordination to drive services and advocate for better lives for all Rhode Islanders.**



Rhode Island Housing
working together to bring you home



**STATE OF RHODE ISLAND
ENERGY EFFICIENCY &
RESOURCE MANAGEMENT COUNCIL**

What is the proven impact of creating green and healthy homes?



Energy Savings Statistics (Rhode Island Pilot, 135 units)

Insulation Installed for the first time	75.4%
Projected Annual Energy Cost Savings Total (of 135 units)	\$99,589 (DOE NEAT Projected Analysis)
Projected Annual Energy Cost Savings Per Unit	\$738 (DOE NEAT Projected Analysis)

Health and Safety Statistics

Ventilation Retrofits	93%
Trip and Fall Repairs	56%
Pest Remediation Services	44%
Unvented CO hazard Appliances repaired	22

When RIAHH members align, braid and coordinate healthy homes resources, Rhode Islanders not only save money, they can lead safer and healthier lives.

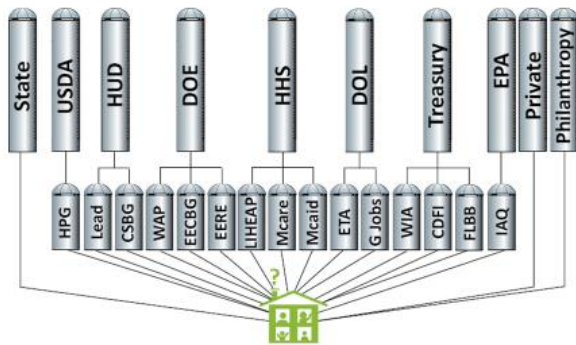
Join us! Contact Betsy Stubblefield Loucks; 401.400.8423 or eloucks@ghhi.org.

RIAHH's Approach to Creating Green and Healthy Homes

Navigating housing resources can be confusing and daunting for most home owners and tenants.

RIAHH attacks this problem from both sides: we coordinate services to help families achieve greener and healthier homes, and we work upstream to align, braid and coordinate local and state policies to promote green and healthy housing.

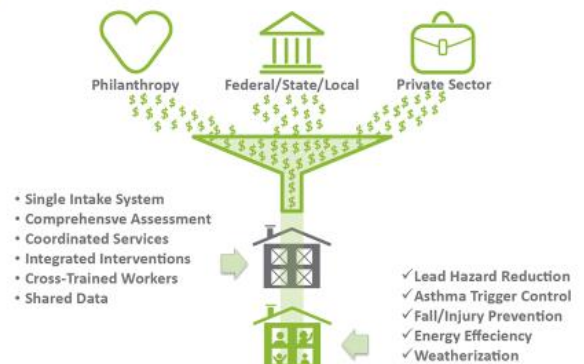
Where Do Families Go For Help?



How is this project innovative?

- Real change is possible when organizations work together, using data and coordination to drive our services and advocacy towards positive social change for all Rhode Islanders.
- RIAHH uses a *collective impact approach* in order to create long-term, sustainable change.
- Organized by a “backbone organization”, the Green and Healthy Homes Initiative of Rhode Island, RIAHH achieves its work through action teams of volunteers.
- RIAHH Action Teams meet every month to move our work forward.
- Our Executive Steering Committee consists of organizations listed on reverse.
- **GHHI is a national leader** in the healthy homes movement and works to improve unhealthy and inefficient housing to combat the negative costs of chronic environmental health concerns such as asthma, lead-based paint poisoning and trip and falls as well as energy-related costs resulting from non-efficient housing.

A Model That Benefits Families



Backbone Organization: GHHI

2015 Deliverables

Executive Steering Committee

Policy Action Team

Data Action Team

Resource Coordination Action Team

Workforce Action Team

Lead policy analysis

Gap analysis of healthy homes data

Web-based clearing-house and resource

Career ladder outline & professional network

Who does RIAHH reach?

- Community based healthy housing advocacy and services organizations
- Residential building professionals
- K-12 educational institutions
- Financial institutions
- Health care providers
- Health care insurance providers
- Legislative Bodies (State and Local)
- Public Health Professionals
- Home Visiting and Community Health Workers
- Research-Based Organizations/ Higher Education
- State and Federal Agencies
- Utility Providers
- Workforce Training Providers

We have over 80 participating RI organizations... and counting! Join us!