

Monitoring our Mobile Learning Initiative

Baseline Measures
June 9, 2015

Student Voice



Student Outcome #1:

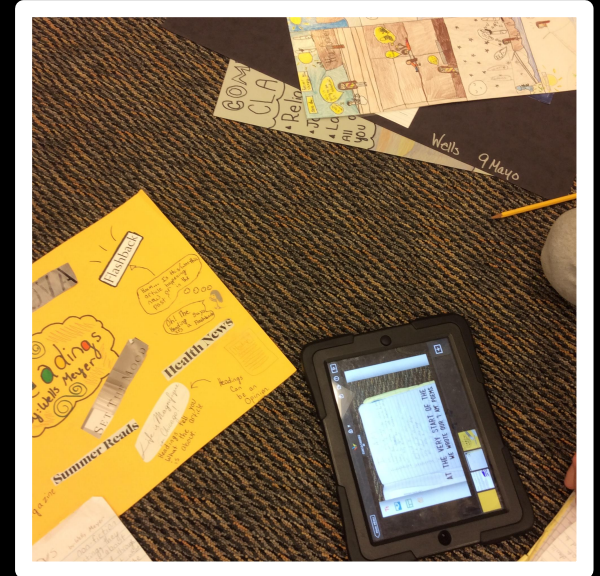
Students have increased opportunities for self-directed learning experiences.

BrightBytes Data (CASE)

- ❖ 4Cs - Communication, Collaboration, Critical Thinking and Creativity
- ❖ Assistive Tech
- ❖ Formative Assessment
- ❖ Access
- ❖ 3Ps (Policy, Procedure, Practice)
- ❖ Beliefs

Other Data

- ❖ iOs App Requests



#1: Students have increased opportunities for self-directed learning experiences.

BrightBytes Data

Domains	Indicators	Baseline (6/2015)	2017-2018 Score (Revised Goals)
Classroom	4C's- Teacher	Beginning	Advanced
	4C's- Student	Emerging	Advanced
	Assistive Tech	Emerging	Advanced
	Formative Assessment	Emerging	Exemplary
Access	Access at Home	Advanced	Advanced
	Access at School	Advanced	Exemplary
Skills	Online	Advanced	Exemplary
	Multimedia	Advanced	Advanced
Environment	3P's Policy, Procedures, Practices	Proficient	Advanced
	Professional Learning	Emerging	Exemplary
	Beliefs	Advanced	Advanced

Score Legend

- Exemplary
1200-1300
- Advanced
1100-1199
- Proficient
1000-1099
- Emerging
900-999
- Beginning
800-899

#1: Students have increased opportunities for self-directed learning experiences.

iOS App Data



Domain	Indicators	2014-2015 Score (Prediction)	Baseline (6/2015)	2017-2018 Score (Revised Goals)
iOS App Requests	Percentage of teachers requesting apps for further exploration.	10% increase from August to June	24% Increase from August to June	50% increase from 2014-2018

Students use technology to effectively initiate and engage in collaborative learning.

- ❖ **4Cs - Communication, Collaboration, Critical Thinking and Creativity**
- ❖ **Access**
- ❖ **Skills (foundational, online, multimedia)**

- ❖ Schoology
- ❖ Google Apps
- ❖ App Requests



#2: Students use technology to effectively initiate and engage in collaborative learning.

BrightBytes Data

Domains	Indicators	Baseline (6/2015)	2017-2018 Score (Revised Goals)	<div>Score Legend</div> <ul style="list-style-type: none"> Exemplary 1200-1300 Advanced 1100-1199 Proficient 1000-1099 Emerging 900-999 Beginning 800-899
Classroom	4C's- Teacher	Beginning	Advanced	
	4C's- Student	Emerging	Advanced	
Access	Access at Home	Advanced	Advanced	
	Access at School	Advanced	Exemplary	
Skills	Foundational	Advanced	Exemplary	
	Online	Advanced	Exemplary	
	Multimedia	Advanced	Advanced	

#2: Students use technology to effectively initiate and engage in collaborative learning.

Schoology and Google Drive Data

Domain	Indicators	2014-2015 Score (Prediction)	Baseline (6/2015)	2017-2018 Score (Revised Goals)
Schoology Statistics	Percentage of teachers using Schoology to deliver content.	10% increase from Year to Year	28% Increase from August to June	50% increase from 2014-2018
Google Drive Statistics-Teachers	Use of Google Docs, Sheets, Slides and Forms, number of published documents.	10% increase from Year to Year	60% increase from August to June	50% increase from 2014-2018



Student Outcome #3

Students are savvy, strategic, responsible and balanced users of technology.

BrightBytes Data (CASE)

- ❖ Assistive Technology
- ❖ Access
- ❖ Skills (online, multimedia)
- ❖ Digital Citizenship

Other Data

- ❖ Behavior Data
- ❖ Content Filter
- ❖ Paper Consumption



#3: Students are savvy, strategic, responsible and balanced users of technology.

BrightBytes Data

Domains	Indicators	Baseline (2015)	2017-2018 Score (Revised Goals)	<div>Score Legend</div> <ul style="list-style-type: none"> Exemplary 1200-1300 Advanced 1100-1199 Proficient 1000-1099 Emerging 900-999 Beginning 800-899
Classroom	Assistive Tech	Emerging	Advanced	
	Digital Citizenship- Teacher	Emerging	Exemplary	
	Digital Citizenship- Student	Proficient	Exemplary	
Access	Access at Home	Advanced	Advanced	
	Access at School	Advanced	Exemplary	
Skills	Online	Advanced	Exemplary	
	Multimedia	Advanced	Advanced	

#3: Students are savvy, strategic, responsible and balanced users of technology.

Behavior Data (2014-2015, Carleton Washburne)

	Trimester 1	Trimester 2	Trimester 3	TOTAL
iPad	5	18	5	28
Cell Phone	21	24	15	60

Internet Content Filter - Suspicious Searches (April - June 2015)

Total Searches	Suspicious Searches	Percent of queries marked as suspicious
3724	418	11%

Paper Consumption 2012-2015

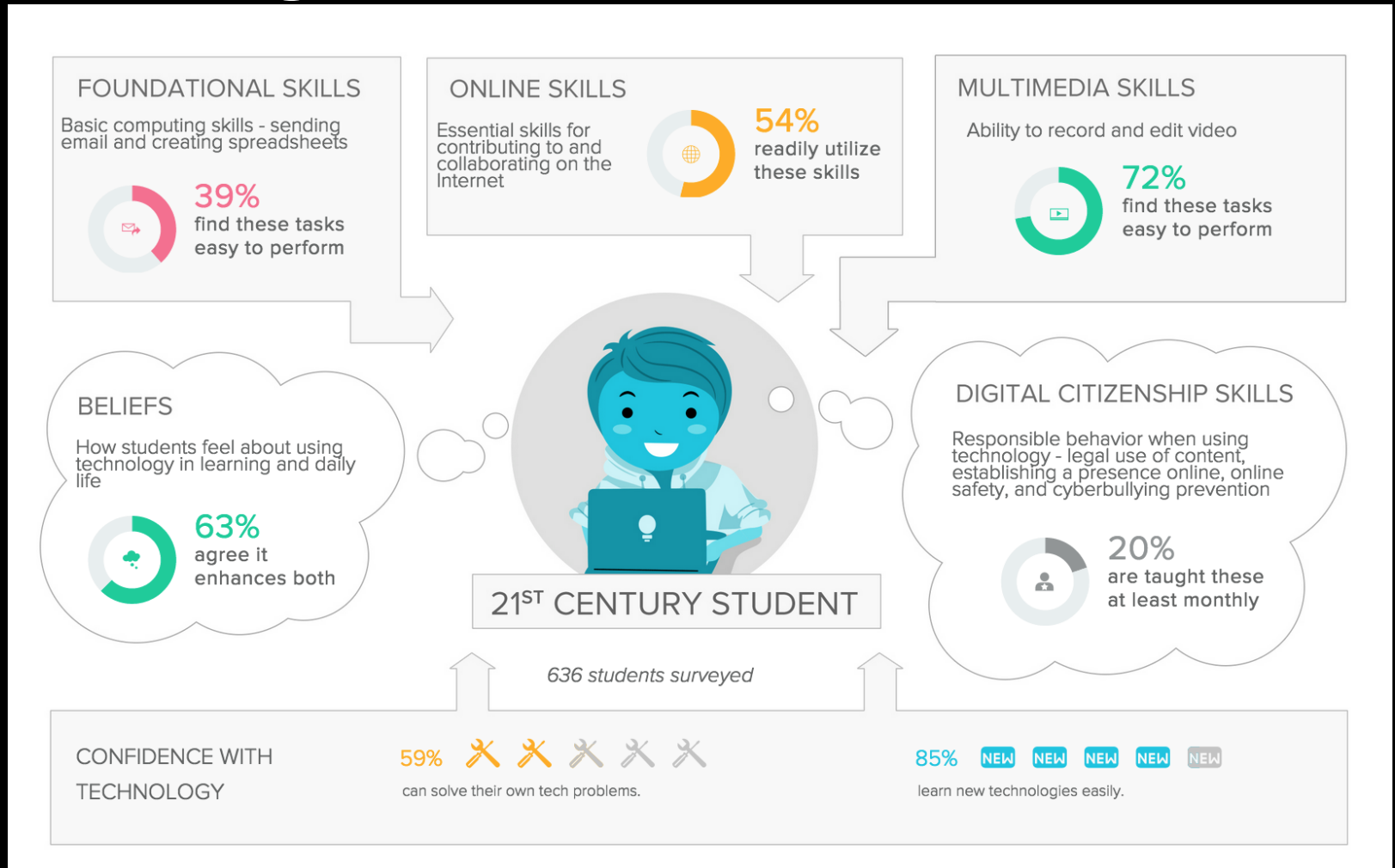
	2012-13	2013-14	2014-15	2015-16	Percent Decrease
Total Paper Order	690 cases	784 cases	719 cases	407 cases	43% from 2014-15 to 2015-16

Strengths

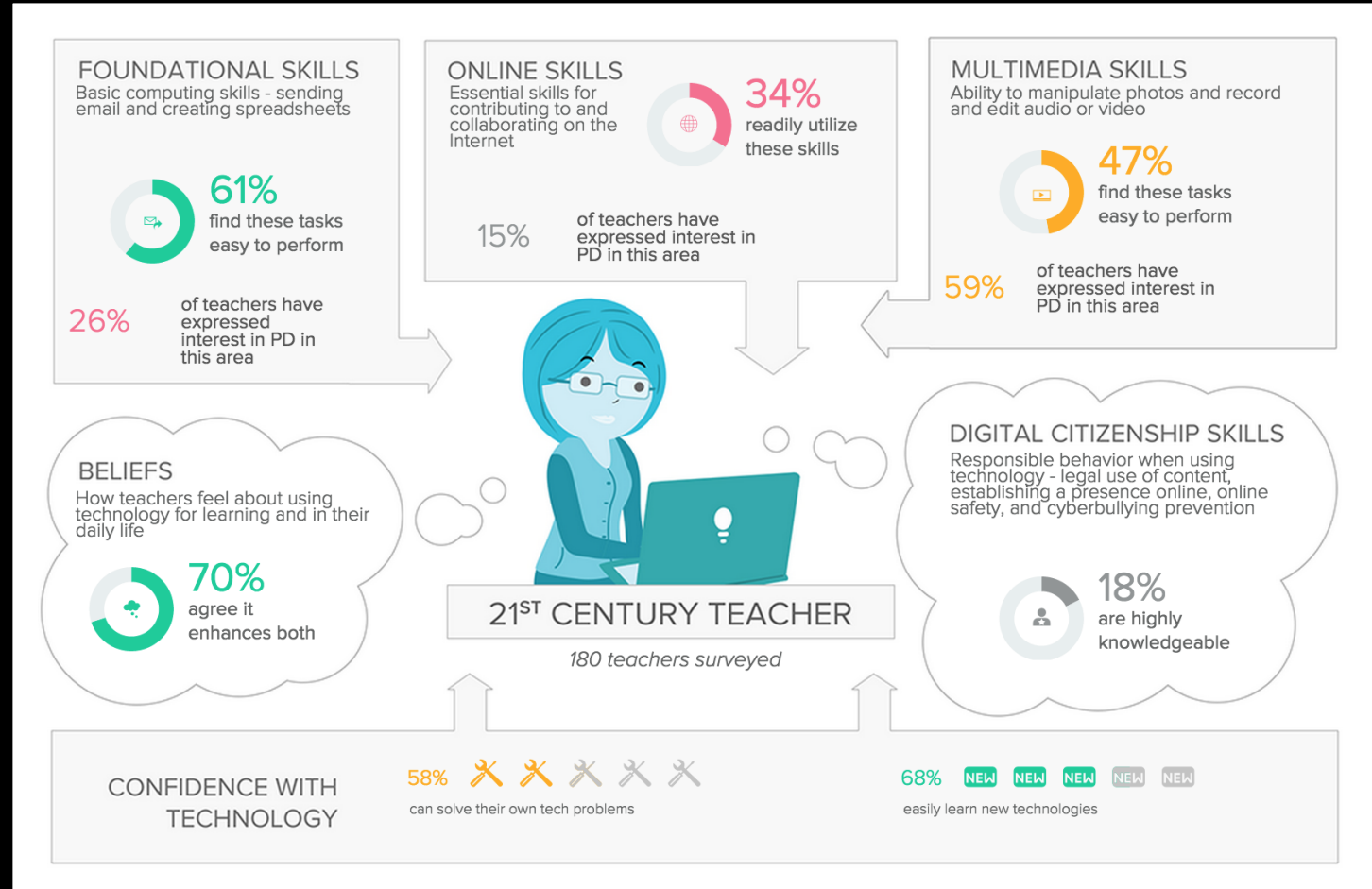
BrightBytes Data (CASE)

Domains	Indicators	Baseline (2015)	2017-2018 Score (Revised Goals)	<div>Score Legend</div> <div><div>● Exemplary 1200-1300</div><div>● Advanced 1100-1199</div><div>● Proficient 1000-1099</div><div>● Emerging 900-999</div><div>● Beginning 800-899</div></div>
Access	Access at Home	Advanced	Advanced	
	Access at School	Advanced	Exemplary	
Skills	Foundational	Advanced	Exemplary	
	Online	Advanced	Advanced	
	Multimedia	Advanced	Advanced	
Environment	Beliefs	Advanced	Advanced	

Next Steps- Digital Citizenship



Next Steps- Professional Learning



Next Steps- 4Cs

Communication, Collaboration, Critical Thinking, Creativity

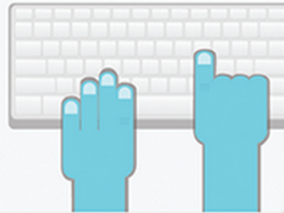
49%

of students are asked to collaborate online with classmates at least monthly



42%

of students are asked to write online at least monthly



43%

of students are asked to identify and solve authentic problems using technology at least monthly



23%

of teachers ask their students to complete online assessments at least monthly



83%

of teachers spend less than 3 hours per year teaching digital citizenship



55%

of your teachers who use assistive technology use it with students at least monthly

Next Steps

Digital Citizenship, Professional Learning and the 4C's

2015-2016 Strategic Plan Goals for MLI

- Create and Implement K-8 Digital Citizenship curriculum
- Present Winnetka Parent Institute series focused on technology integration and digital citizenship
- Continue to decrease the student-to-device ratios and increase access to a variety of devices
- Continue to build the repository of training resources
- Implement, monitor and evaluate professional learning for using technology effectively to assess student learning, differentiate instruction, and provide experiential learning opportunities (Institute Days, Winnetka University, Job-Embedded)

MLI Monitoring

2015-2018	October	February	May
BrightBytes Survey	Yes	Yes	Yes
Teacher Interviews	Yes	No	Yes
Student Interviews	Yes	No	Yes
App Requests	Yes	No	Yes
Classroom Observations	Yes	Yes	Yes
Schoology Statistics	Yes	No	Yes
Google Drive Statistics	Yes	Yes	Yes
Internet Content Filter	Yes	No	Yes
Student Behavior	Yes	No	Yes
Paper Consumption	Yes	No	Yes



Q & A