

LAVEEN MARKETPLACE

5130-5240 W. Baseline Road | Laveen, AZ 85339
 NWC 51st Avenue & Baseline Road



Available For Lease - 1,140 SF to 2,918 SF Shop Space



FEATURES:

- ZONING: C2, City of Phoenix
- Located on the NWC of 51st Avenue and Baseline Road
- Anchored by Fry's Food and Drug and Home Depot
- Project Size: 71,619 SF
- Excellent Demographics including Average Household Income within 1 mile of \$83,898.

JOIN:



DEMOGRAPHICS

2015	1 Mile	3 Mile	5 Mile
Population	14,663	54,294	112,590
Avg HH Income	\$83,898	\$76,962	\$67,995

Traffic Counts:	N/S on 51st Avenue VPD	15,900
	E/W on Baseline Road VPD	16,200



BRYAN LEDBETTER, CCIM, CCLS
 Director, Marketing and Leasing
 P. 602.386.5710
 Email: bledbetter@zellcre.com

ZELL COMMERCIAL REAL ESTATE SERVICES, INC.
 5343 N. 16th Street, Suite 290
 Phoenix, AZ 85016-3223
 P. 602.248.0600 F. 602.248.0501
www.ZELLCRE.com



This information is given with the understanding that all negotiations relating to the purchase and/or lease of this property shall be conducted through the office of ZELL Commercial Real Estate Services. The information, while not guaranteed, has been secured from sources we believe to be reliable.

LAVEEN MARKETPLACE

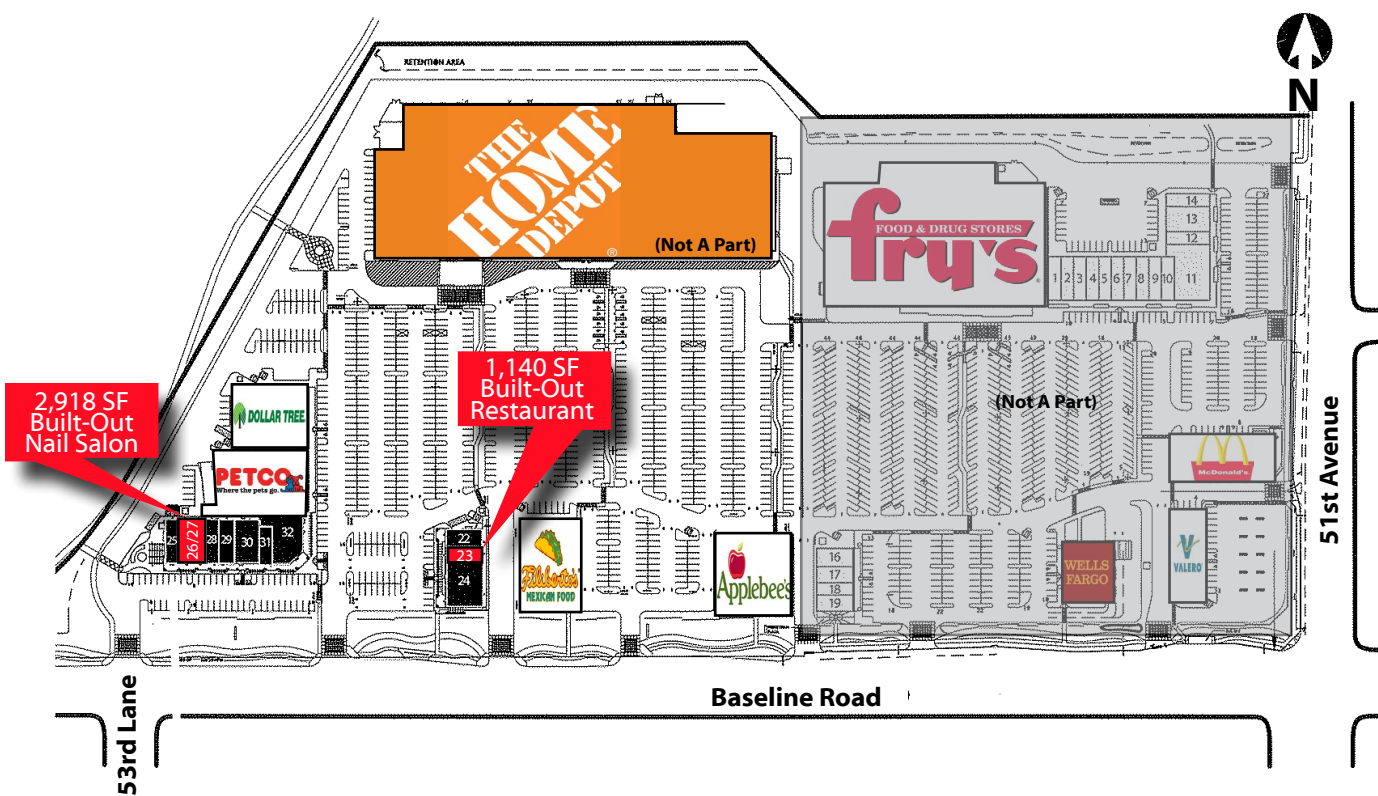
5130-5240 W. Baseline Road | Laveen, AZ 85339
 NWC 51st Avenue & Baseline Road



Available For Lease - 1,140 SF to 2,918 SF Shop Space

Shop	Tenant	SF
22	Diamond Wireless	1,800
23	AVAILABLE	1,140
24	Barro's Pizza	4,500
25	Pizza Hut	1,512
26/27	AVAILABLE (Nail Salon)	2,918
28	H& R Block	1,618
29	TitleMax	1,717
30	Leslie's Pool Supplies	2,810
31	State Farm Insurance	1,200
32	Southwest Dental Group	4,269

Shop	Tenant	SF
33	PETCO	15,263
34	Dollar Tree	10,000
PAD	Tenant	SF
	Applebee's	5,600
	Filiberto's	2,400
Anchor	Tenant	SF
	Fry's Food and Drug	70,953
	Home Depot	139,529



BRYAN LEDBETTER, CCIM, CCLS
 Director, Marketing and Leasing
 P. 602.386.5710
 Email: bledbetter@zellcre.com

ZELL COMMERCIAL REAL ESTATE SERVICES, INC.
 5343 N. 16th Street, Suite 290
 Phoenix, AZ 85016-3223
 P. 602.248.0600 F. 602.248.0501
www.ZELLCRE.com



This information is given with the understanding that all negotiations relating to the purchase and/or lease of this property shall be conducted through the office of ZELL Commercial Real Estate Services. The information, while not guaranteed, has been secured from sources we believe to be reliable.