

EDISON BALLROOM

Floor Plans and Capacity Charts



- ▶ SEATED DINNER MAIN ROOM
- ▶ Max Capacity: 350
- ▶ 33 Tables
- ▶ 23 TEN TOP Tables = 230
- ▶ 10 TWELVE TOP Tables = 120
- ▶ Total Max Capacity = 350
- ▶ Cocktail Reception on Mezzanine: Capacity 280
- ▶ Cocktail Reception in VIP Lounge: Capacity 150
- ▶ Total Cocktail Reception Capacity = 430

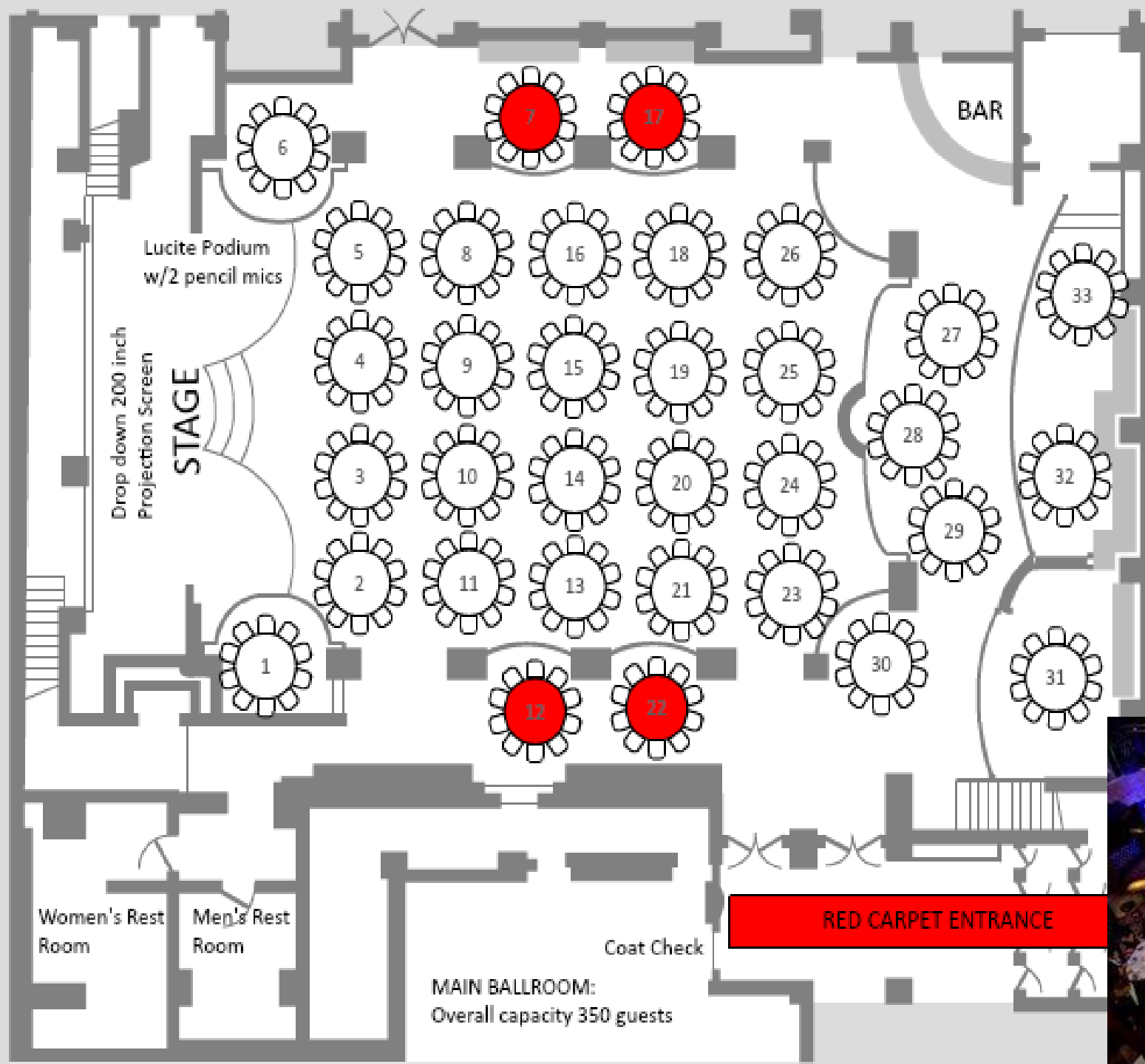
FLOOR PLANS SHOWING THIS
SCENERIO ON NEXT PAGE

MAIN BALLROOM

33 Tables
Tables 7, 17, 12, and 22 all have slightly obstructed views because of the columns. All other tables have fantastic site-lines.

Stage Plot
available on page 12.

Audio & Visual
All state-of-the-art AV included



- ▶ SEATED DINNER MEZZANINE
- ▶ Max Capacity: 180
- ▶ 16 Tables
- ▶ 6 TEN TOP Tables = 60
- ▶ 10 TWELVE TOP Tables = 120
- ▶ Total Seated Max Capacity = 180
- ▶ Cocktail Reception on Mezzanine: Capacity 280
- ▶ Cocktail Reception in VIP Lounge: Capacity 150
- ▶ Total Cocktail Reception Capacity on Second Level = 430

FLOOR PLANS SHOWING THIS
SCENERIO ON NEXT PAGE

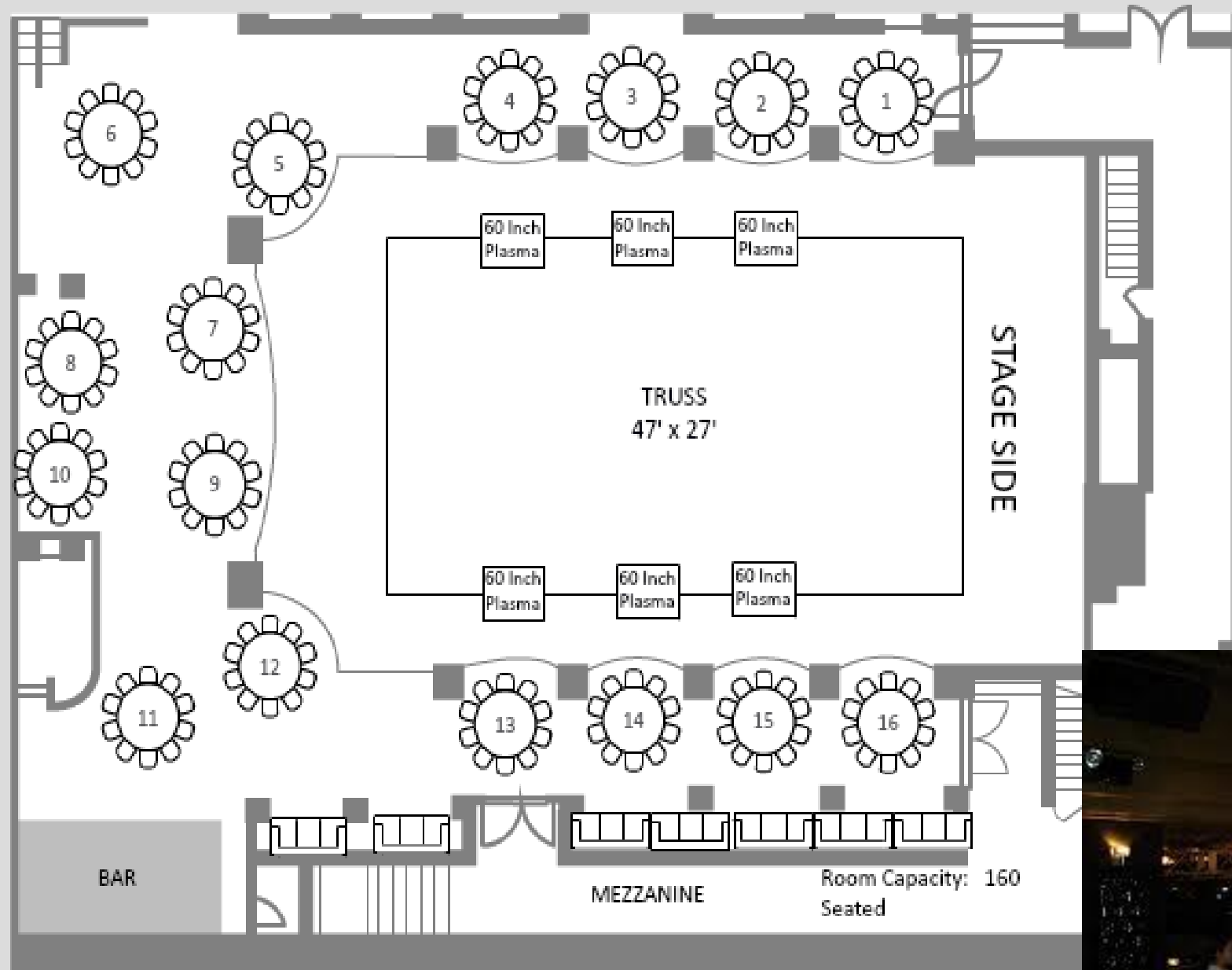
MEZZANINE

Overlooks Ballroom

16 Tables
Tables 5, 7, 8, 10, 9, 12, 13, 14, 15, and 16 can be Twelve Tops

Stage Plot
available on
page 12.

Audio & Visual
All state-of-the-
art AV included



- ▶ SEATED DINNER EDISON LOUNGE
- ▶ Max Capacity: 80
- ▶ 8 Tables plus 4 booths
- ▶ 8 TEN TOP Tables = 80
- ▶ 4 Booths = 16
- ▶ Total Seated Max Capacity = 96
- ▶ Cocktail Reception on Mezzanine: Capacity 280
- ▶ Cocktail Reception in VIP Lounge: Capacity 150
- ▶ Total Cocktail Reception Capacity on Second Level = 430

FLOOR PLANS SHOWING THIS
SCENERIO ON NEXT PAGE

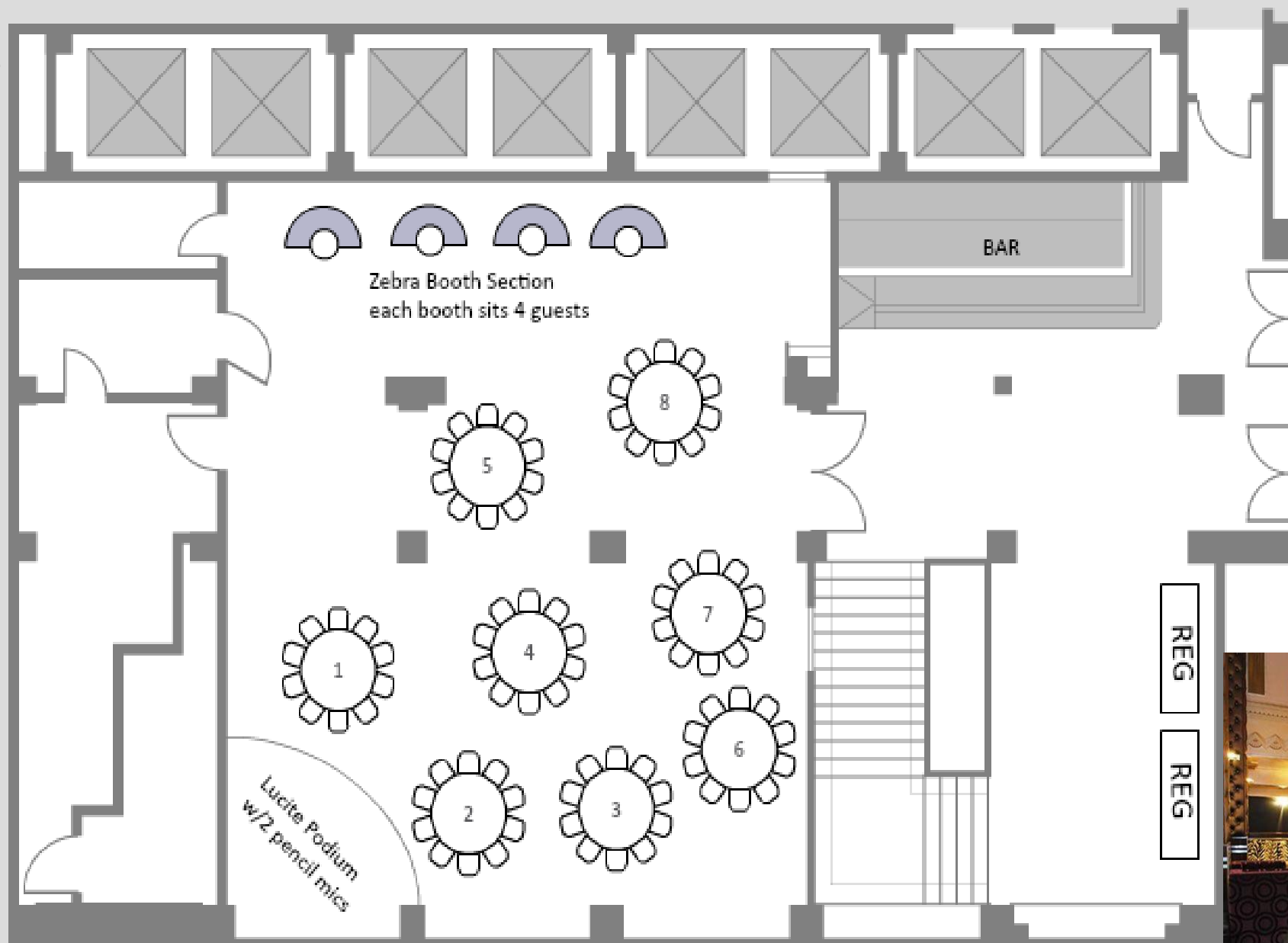
EDISON LOUNGE

Adjacent to Mezzanine

8 Tables
All Tables are
TEN TOPS.
Booths sit 4
Guests each

Stage Plot
available on
page 12.

Audio & Visual
All state-of-the-
art AV included
This room also
has a stage.



- ▶ OPEN RECEPTION MAIN ROOM
- ▶ Max Capacity: 690
- ▶ Couches, Vignettes, Café Seating
- ▶ 3 Bars
- ▶ Total Max Capacity = 690
- ▶ Cocktail Reception on Mezzanine: Capacity 280
- ▶ Cocktail Reception in VIP Lounge: Capacity 150
- ▶ Total Cocktail Reception Capacity all 3 Rooms = 1,120

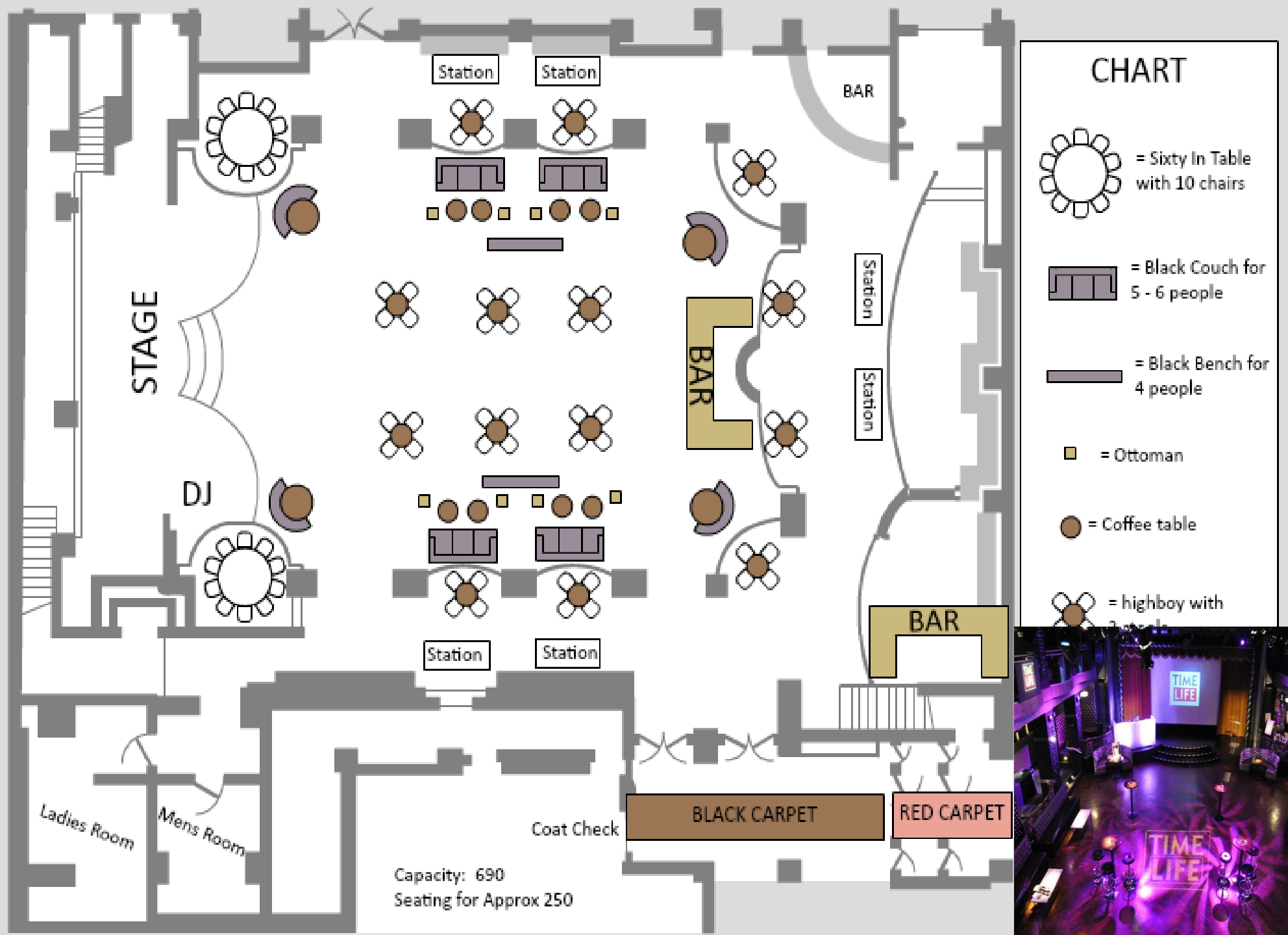
FLOOR PLANS SHOWING THIS
SCENERIO ON NEXT PAGE

MAIN BALLROOM

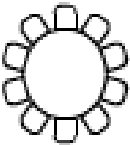





Set-up Example
Furniture and tables can be re-arranged based on your theme.

Stage Plot
available on page 12.

Audio & Visual
All state-of-the-art AV included
This room also has a stage.



CHART

-  = Sixty In Table with 10 chairs
-  = Black Couch for 5 - 6 people
-  = Black Bench for 4 people
-  = Ottoman
-  = Coffee table
-  = highboy with



Capacity: 690
Seating for Approx 250

- ▶ OPEN RECEPTION MEZZANINE
- ▶ Max Capacity: 280
- ▶ Couches, Vignettes, Café Seating
- ▶ 2 Bars
- ▶ Total Max Capacity = 280

FLOOR PLANS SHOWING THIS
SCENERIO ON NEXT PAGE

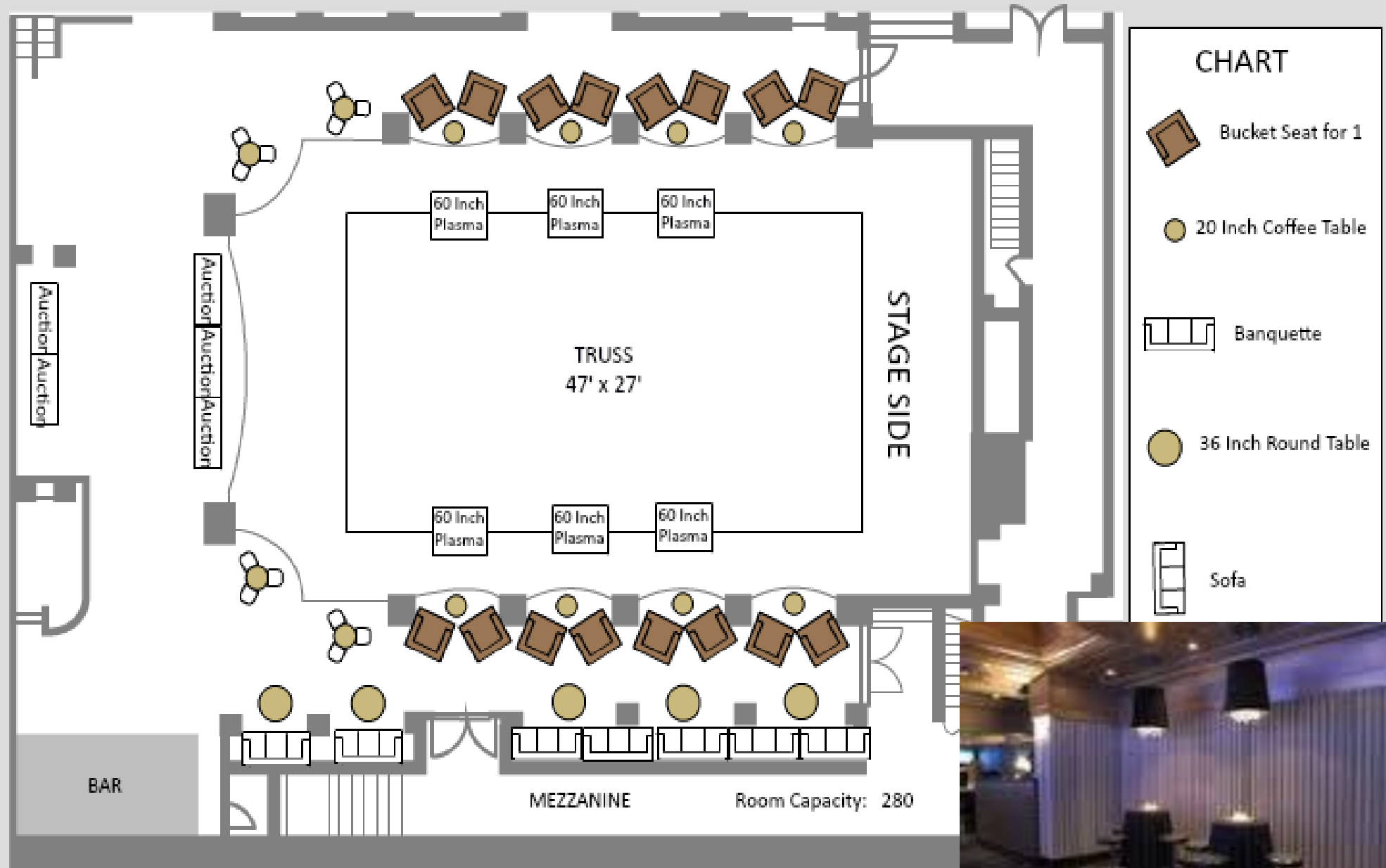
A decorative graphic consisting of several parallel white lines of varying lengths, slanted diagonally from the bottom right towards the top right, set against a blue background.

MEZZANINE

Set-up Example
Furniture and tables can be re-arranged based on your theme.

Stage Plot
available on page 12.

Audio & Visual
All state-of-the-art AV included
This room also has a stage.



- ▶ OPEN RECEPTION VIP LOUNGE
- ▶ Max Capacity: 150
- ▶ Couches, Vignettes, Café Seating
- ▶ 2 Bars
- ▶ Total Max Capacity = 150

FLOOR PLANS SHOWING THIS
SCENERIO ON NEXT PAGE

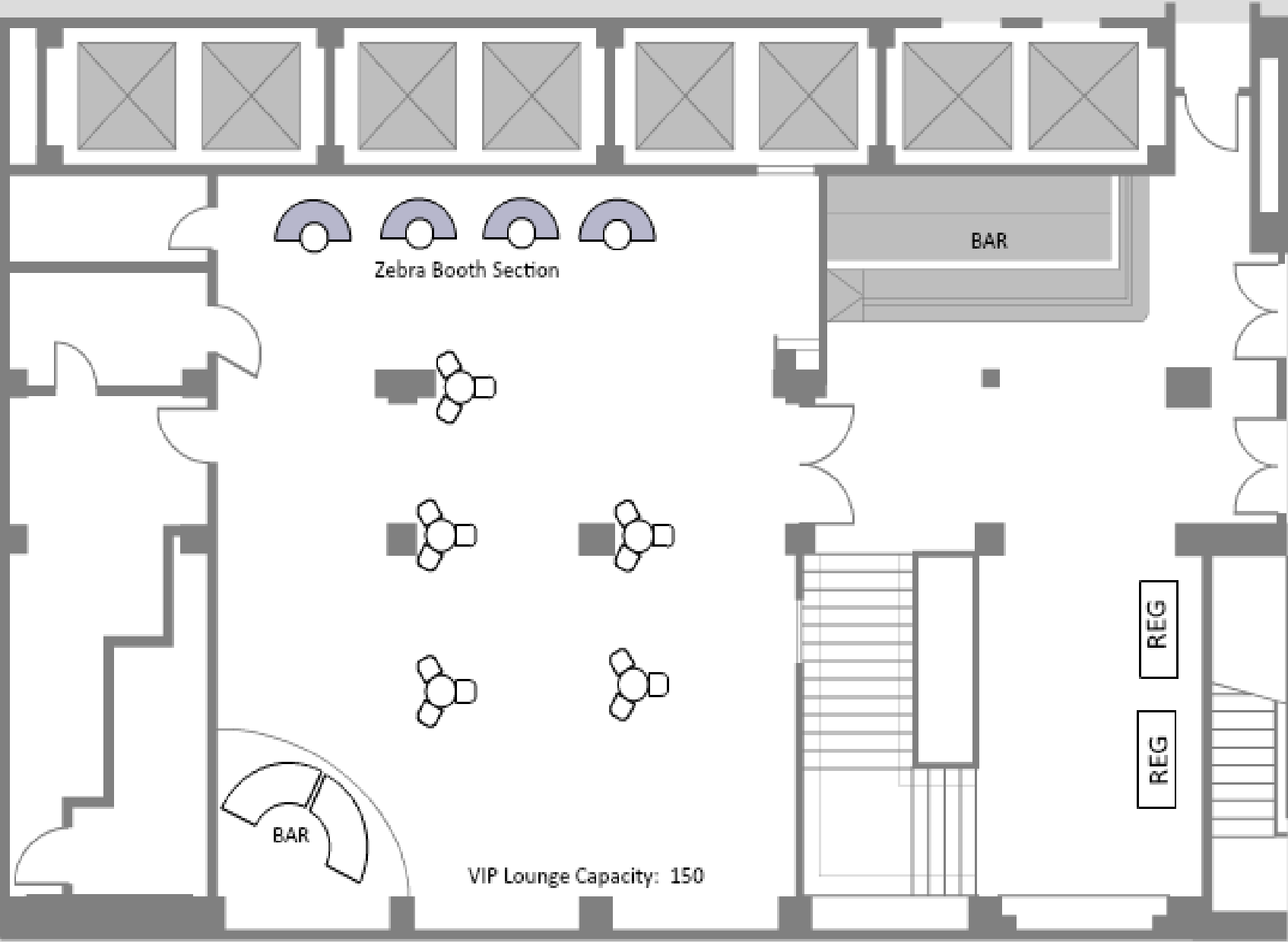
A decorative graphic consisting of several parallel white lines of varying lengths, slanted diagonally from the bottom right towards the top right, set against a blue background.

EDISON LOUNGE

Set-up Example
Furniture and tables can be re-arranged based on your theme.

Stage Plot
available on page 12.

Audio & Visual
All state-of-the-art AV included
This room also has a stage.



- ▶ THEATER STYLE MAIN ROOM
- ▶ Max Capacity: 400 with Edison Ballroom Chairs/500 with Rented Chairs.
- ▶ Theater style seating in rows going all the way back.
- ▶ 1 Bar w/break stations on sides of room
- ▶ Total Max Capacity = 400/500

FLOOR PLANS SHOWING THIS
SCENERIO ON NEXT PAGE

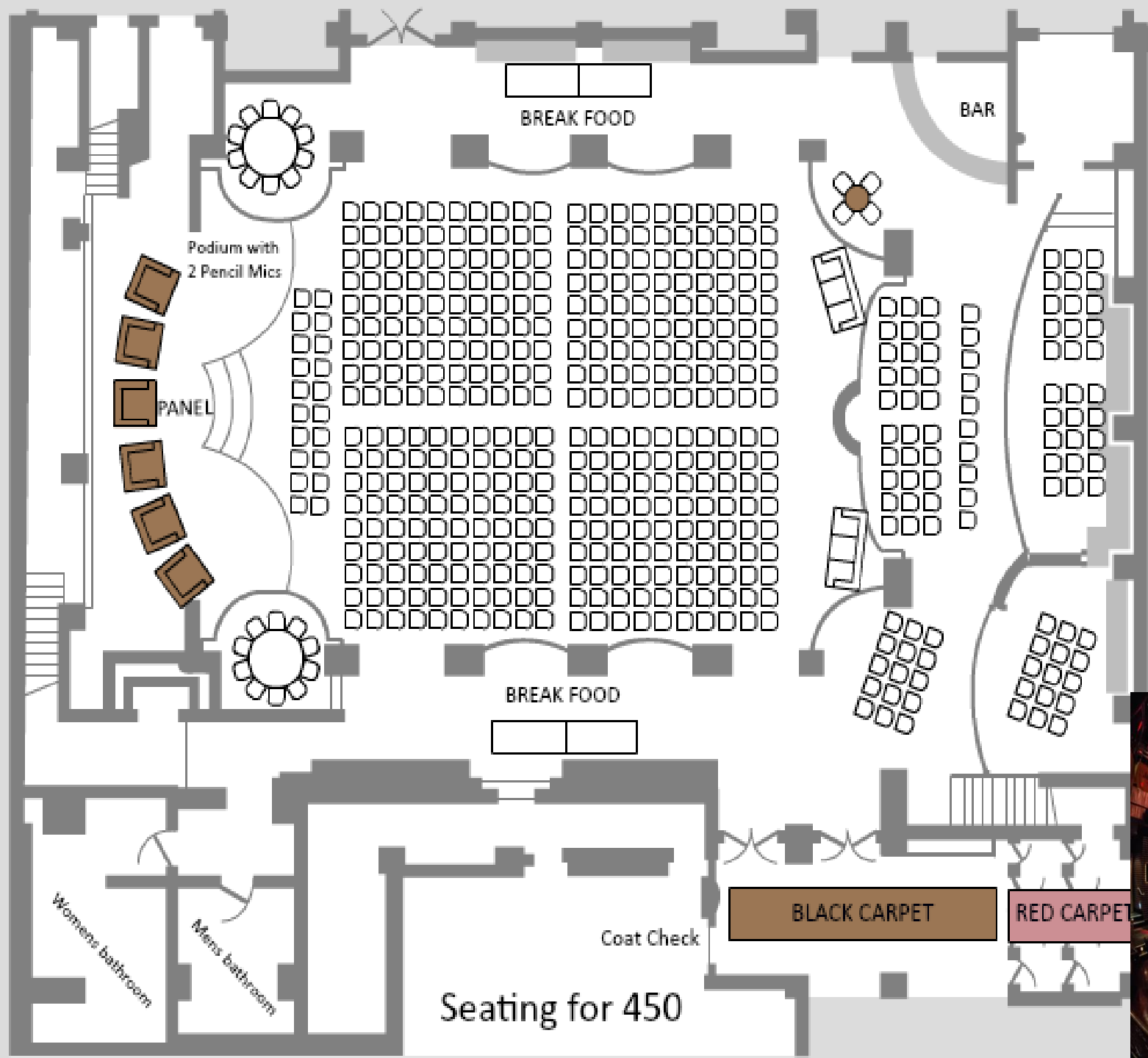
A decorative graphic consisting of several parallel white lines of varying lengths, slanted diagonally from the bottom right towards the top right, set against a blue background.

MAIN BALLROOM

Set-up Example
Edison Ballroom theater seats are comfy cushioned black chairs with plenty of space from seat to seat

Panel Seats
Stage is showing 6 Panel seats and podium. Panel Seats is a bucket couch for one. With coffee table filled with bottled waters
Dias for up to 12 speakers also available

4 Drop
Any combination of microphones up to 4 mics are free.
Lucite podium comes with 2 pencil mics



- ▶ CLASSROOM STYLE MAIN ROOM
- ▶ Max Capacity: 275
- ▶ Schoolboy seating with 18 inch wide tables
- ▶ 1 Bar w/break stations on sides of room
- ▶ Total Max Capacity = 275 - 300

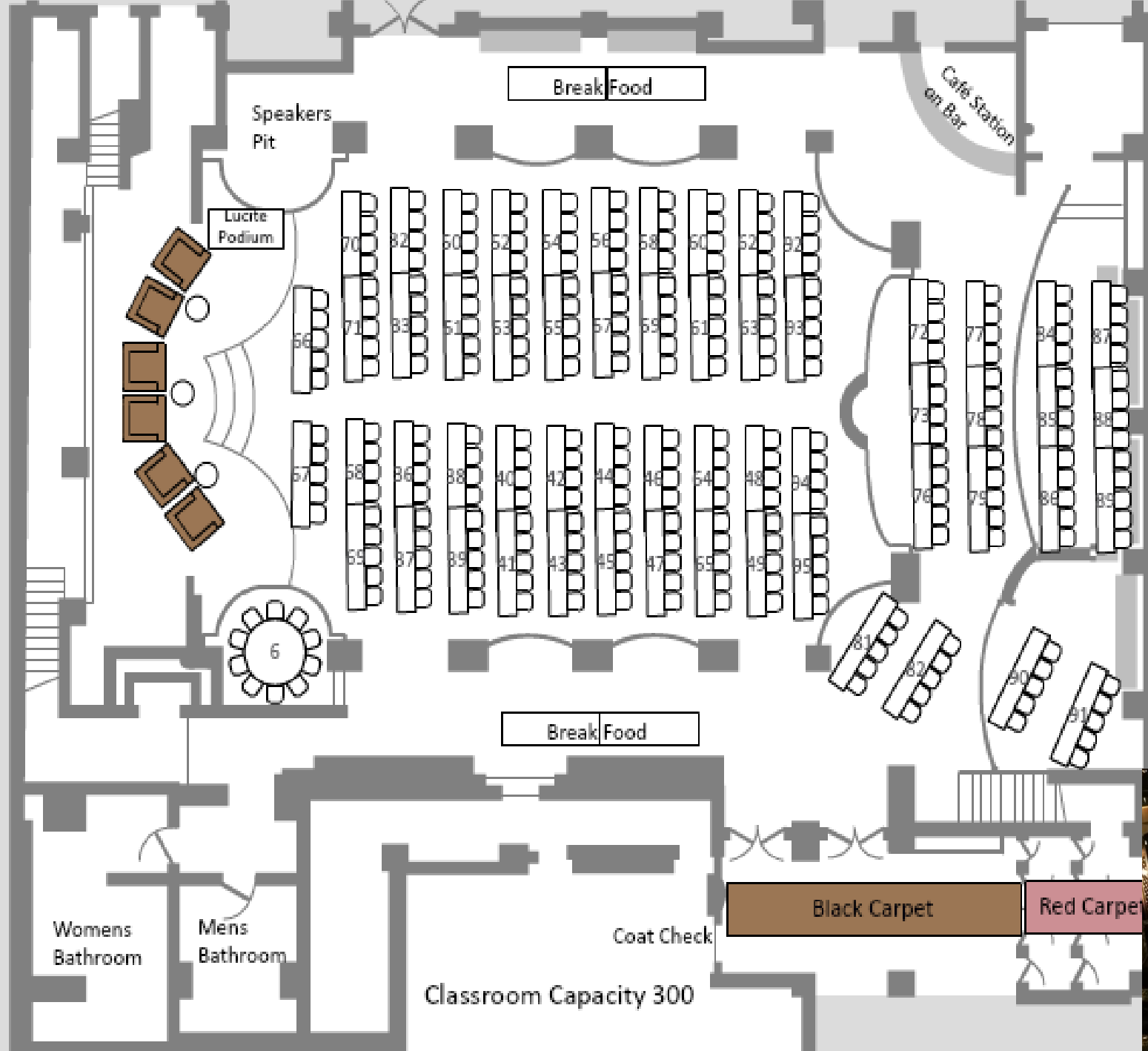
FLOOR PLANS SHOWING THIS
SCENERIO ON NEXT PAGE

MAIN BALLROOM

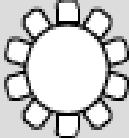

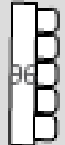
Set-up Example
Edison Ballroom
Classroom Style on
18 inch school boy
tables. Comfy
cushioned black
chairs with plenty of
space from seat to
seat

Panel Seats
Stage is showing 6
Panel seats and
podium. Panel
Seats is a bucket
couch for one. With
coffee table filled
with bottled waters
Dias for up to 12
speakers also
available

4 Drop
Any combination of
microphones up to
4 mics are free.
Lucite podium
comes with 2 pencil
mics



SPECS

-  = Sixty Inch Table
-  plush bucket seats with coffee table
-  = Schoolboy Classroom table

