

FOR SALE

***Former Chris' Coach House
Restaurant and Lounge
w/3 Bedroom Apartment
5,200 SF***

Former well established 120 seat restaurant in business for over 30 years. 2,600 SF restaurant and lounge area. 1,000 SF storage and outdoor patio seats 40. See list of furniture, fixtures and equipment.

1,500 SF 3 bedroom apartment located above restaurant.

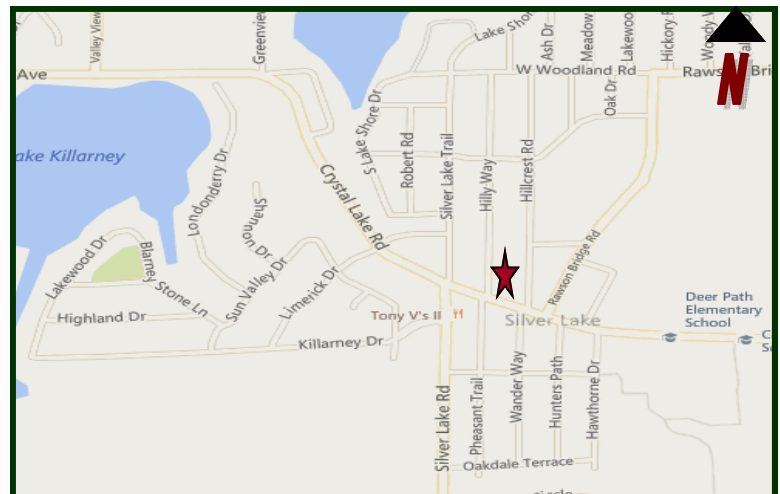


PROPERTY SPECIFICATIONS

Description:	Restaurant/Lounge/ Apartment
Building Size:	5,200 SF
Land Size:	42,978 SF
Year Built:	Unknown
HVAC System:	GFA/ Central Air
Electric:	200 amp 240 V
Sprinklered:	No
Washrooms:	Restaurant (2) Apartment (1)
Floors:	Carpet / Tile
Ceiling Height:	8'
Possession:	Closing
Parking:	45+
Sewer: Septic	Water: Well
Zoning:	B-4
Real Estate Taxes:	\$9,718.16 (2014)
Sale Price:	\$375,000

Loopnet: 19436442

MLS: 09044550



Directions: Route 14 North on Silver Lake Road to East on Crystal Lake Ave. to Corner of Hilly Way.

PIN: 19-01-252-018, 19-01-252-006

September 21, 2015

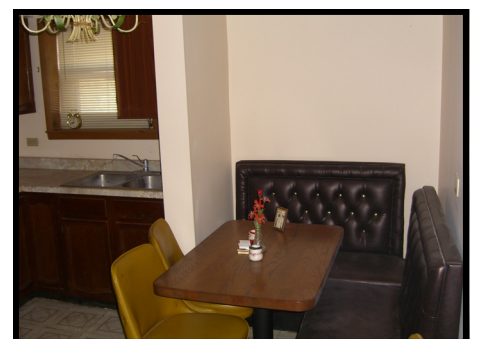
No warranty or representation is made as to the accuracy of the foregoing information. Terms of sale or lease and availability are subject to change or withdrawal without notice. This document is for information purposes only. No offer of sub-agency is being made.

- Industrial
- Commercial
- Office
- Land
- Business

6414 Hilly Way
Cary, IL 60013
Restaurant/Lounge w/ 3 Bedroom Apartment



Furniture has been removed from apartment.



Chris' Coach House
6414 Hilly Way
Cary, IL 60013
Furniture, Fixtures and Equipment

Bar-Dining Room Area:

Oak wood bar, horseshoe shape, seat 20
12 bar stools
2 small bar stools
2 cocktail tables
Three compartment ss bar sink
Ice band
Two door glass beer cooler
Custom built salad bar
22 booths
4 wall banquettes
17 oak tables 42"x30"
2 oak tables round 42"
4 oak tables 36"x36"
2 oak tables 36"x36" w/2 leafs
Wait station
2 counter

Kitchen:

Two door ss cooler
Hobart dishwasher
SS table
Three compartment ss sink
10' exhaust hood with anseel system
Six burner stove with oven
2 fryers
1 ss table
Broiler
Double broiler
Double deck pizza oven
SS hand sink
Steamer
SS salad unit
Steam table with 3 hole grease trap
Water softener leased at \$50 every 3 months

Second Floor Office:

2 Desks

Storage Area:

Walk in cooler (10x6)
Walk in freezer (8x6)

