



DC Branch

IN THIS ISSUE:

- ▶ PGMS DC BRANCH NEWS & MEETINGS 3-4
- ▶ UPCOMING GREEN INDUSTRY EVENTS 5
- ▶ MEET OUR MEMBERS 7
- ▶ NEXT MEETING INFO AND DIRECTIONS..... 9

THE MISSION OF THE PGMS DC BRANCH IS TO FOSTER INTEGRITY AND EXCELLENCE IN GROUNDS MANAGEMENT BY PROMOTING PROFESSIONAL DEVELOPMENT THROUGH EDUCATION PROGRAMS, NETWORKING, COMMUNITY SERVICE, AND FELLOWSHIP.

<http://pgms.org/branchdc>

PRESIDENT'S MESSAGE



Is winter over? I certainly hope so!

Despite having to reschedule the March meeting due to snow (a good call if I do say so myself), we had an excellent turnout with around 40 members in attendance.

Chuck Schuster gave an excellent talk on Nutrient Management Law and compliance in Maryland; I know we all learned a lot and this meeting qualified for two (2) Maryland Nutrient Management CEU's; thank you Chuck!

Corned beef and cabbage for dinner, of course! Kip Cortelyou always treats us to the food of the season; thank you Kip!

Danny Felice of SynaTek sponsored the meeting, give Danny a call for all of your fertilizers, lawn and plant health care products; thank you Danny and SynaTek!

The Branch business meeting approved the budget submitted by Treasurer Doug McDaniel and the Branch Board. The Branch is in sound financial condition, thank you Doug. However, we must be vigilant going forward and we must find ways to keep the Branch healthy into the future. The Branch faces many challenges as expenses continue to rise for meetings and Branch business, so we must continually seek sponsors and those that wish to support the Branch financially. Please let me know if you know of anyone that would like to sponsor or co-sponsor a meeting or if you have any ideas to help promote the Branch.

NEXT MEETING INFORMATION

Date: Thursday, April 2, 2015 at 6:00 PM

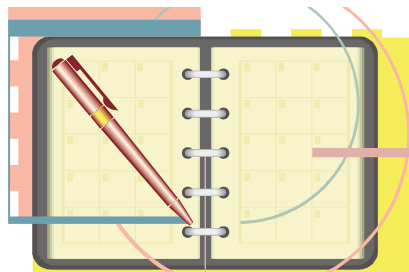
Location: Tudor Place House and Garden

Host: Suzanne Bouchard

Sponsors: SavATree and Gardens Remembered

RSVP: Please RSVP to Amanda Laudwein at 301-590-2840, 301-398-8870 (cell) or laudwein@umd.edu

More Information, Map, and Directions on Page 9



PRESIDENT'S MESSAGE, CONTINUED

President:

Eric Wenger
Complete Plant Health Care, Inc.
Eric@HealthyPlant.com
Term Expires 2015

Vice President:

Christopher Erb
Complete Plant Health Care, Inc.
Chriserb88@gmail.com
Term Expires 2015

Treasurer:

Doug McDaniel
Grounds Management &
Landscaping, Inc.
Groundsmanagementdmd@gmail.com
Term Expires 2015

Secretary:

Joshua Nadler
Bartlett Tree Experts
John.D.Nadler@gmail.com
Term Expires 2015

Chair:

Adam Newhart
City of Gaithersburg
ANewhart@gaithersburgmd.gov
Term Expires 2015

At Large:

Amanda Lee Laudwein
University of Maryland Extension
Laudwein@umd.edu
Term Expires 2015

Ken Ingram
University of Maryland
kingram@umd.edu
Term Expires 2015

Marie Rojas
Borders and Butterflies, Inc.
hortlady@aol.com
Term Expires 2017

Mark Scafide
City of Gaithersburg
mscafide@gaithersburgmd.gov
Term Expires 2015

Shawn Siefers
The Care of Trees
ssiefers@thecareoftrees.com
Term Expires 2017

Newletter Editors:

Michael Gildea
Chevy Chase Club
mikeg@chevychaseclub.org

Katie McDavid
Woodmont Country Club
kmc david@woodmontcc.com

With an eye towards future fiscal responsibility, the Branch will no longer have a booth at the MANTS in Baltimore; 2015 was our last year, although we may look to other ways to get exposure at MANTS in 2016 and beyond.

Marie Rojas reported that there was one applicant for the 2015 DC Branch Educational Scholarship.

Several Branch members came out to lunch on March 10th with longtime DC Branch member Jack Monday (1960's and 70's Smithsonian – correction to the March Newsletter, pictures at Whitehouse, Jack did not work there) at Hershey's Restaurant in Gaithersburg, MD. Did you know that Jack brought the first female into the DC Branch of PGMS, way to go Jack! We were also honored to have other longtime members Ralph D'Amato (1960's DC Highway Department) and Ludy Schneider (1960's and 70's National Park Service, Whitehouse), their knowledge and stories are something we can all appreciate and learn from. We had a very enjoyable time and Jack really appreciated seeing everyone; we will do this again, so consider coming in the future, it is a real learning experience (and the chicken is pretty good too!).

Montgomery County Legislative Update Proposed 52-14 – Next Work Session, March 30th at 9:00am. If you would like to express your opinion about the proposed legislation, you can do so by emailing the County Council at: <http://www.montgomerycountymd.gov/council/>; you can find links directly to all council members at this address.

Mark your calendar: DC Branch PGMS July 16, 2015 Summer Field Day at American University
National PGMS - Aug. 3-5, 2015 Summer Education Conference Sacramento, Calif.

The next DC Branch Meeting: April 2, 2015 @ 6PM Tudor House

Topic: Garden Tour

Tudor Place Historic House & Garden 1644 31st Street NW Washington, DC 20007

Host: Suzanne Bouchard

Sponsors: SavATree and Gardens Remembered

Please RSVP for this meeting

As always, stay safe and I look forward to seeing you at Tudor House.

UPCOMING PGMS-DC BRANCH MEETINGS AND EVENTS

APRIL 2, 2015

Tudor House

Program: Gardens Tour

Washington, DC

Sponsors: SavATree and Gardens Remembered

MAY 7, 2015

Smithsonian

Program: TBD

Washington, DC

Sponsor: **Needed**

JUNE 4, 2015

Mount Vernon

Program: TBD

Mt Vernon, VA

Sponsor: Bartlett Springfield Office

“GREEN MIX” for your environmentally friendly parking lot.

Chamberlain has the first urban plant producing foamed asphalt “Green Mix” in the USA.

For our customers this means:

cost-savings and the environmental benefits

Foamed asphalt “Green Mix” is produced with 100% recycled asphalt.

ASPHALT • CONCRETE
SEALCOATING • STRIPING

Contact: BILL LaWALL

301-725-4330 • 866-670-1234

www.chamberlaincontractors.com



Kubota

MARK S. HOWELL
Sales

Work 1-301-670-9300
Fax 1-301-926-3705
Cell 1-240-876-0514

Gaithersburg Equipment Co.
700 East Diamond Avenue
Gaithersburg, MD 20877



Moving ahead to serve you better.

For Commercial Equipment and Irrigation call:

888.384.8676



8015 Dorsey Run Road • Jessup, MD 20794
www.turf-equipment.com

UPCOMING PGMS-DC BRANCH MEETINGS AND EVENTS, CONTINUED

JULY 16, 2015

Summer Field Day
Trade Show and Seminar
American University
Washington, DC

AUGUST 6, 2015

Waverly Farms
Program: TBD
Adamstown, MD
Sponsor: **Needed**

SEPTEMBER 3, 2015

TBD

OCTOBER 1, 2015

City of Gaithersburg, MD
Program: Visit new park
Gaithersburg, MD
Sponsor: **Needed**

NOVEMBER 5, 2015

Virginia Theological Seminary
Program: TBD
Alexandria, Virginia
Sponsor: **Needed**



Premium Athletic Fields... For All Sports



Alpine Services Will Satisfy Our Clients' Expectations With Excellence and Integrity...

Whether you are renovating your existing field or building a new artificial or natural field, Alpine's cutting edge technology and precision grading, will get the job right the first time!



Alpine also offers TrakMats® - ground cover mats - to protect your turf and grass from heavy machinery and equipment.

*Alpine Services, Inc.
Call 800-292-8420
www.alpineservices.com*



RAEMELTON FARM

Adamstown MD www.Raemelon.com 717-496-5887



For the life of your trees.

BARTLETT.
BECAUSE CUSTOMER SERVICE,
JUST LIKE TREES, SHOULD BE
A BREATH OF FRESH AIR.

We're Bartlett Tree Experts and we've been exceeding our customers' expectations for over 100 years. No matter the size or scope of your tree and shrub needs, our experts bring a rare mix of local service, global resources and innovative tree care practices that makes landscapes thrive. Trees add value to properties. And Bartlett adds value to trees.

PRUNING FERTILIZATION PEST & DISEASE MANAGEMENT REMOVAL
CALL 877 BARTLETT 877.227.8538 OR VISIT BARTLETT.COM

UPCOMING GREEN INDUSTRY EVENTS

LAHR NATIVE PLANT: MAKING CONNECTIONS

Saturday, March 28, 2015

National Arboretum Visitor Center

For information, visit: <http://www.usna.usda.gov/Education/events.html>

CASEY TREE CANOPY CONNECTIONS SYMPOSIUM: URBAN FORESTS FOR PUBLIC GOOD

Saturday, March 28, 2015

Carnegie Institution for Science, Washington, DC

For information: <http://caseytrees.org/event/canopy-connections-urban-forests-for-public-good/>

2015 INTERSTATE ORNAMENTAL PLANT MANAGEMENT CONFERENCE

April 6, 2015

Maritime Institute, Linthicum Heights, MD

Contact: Avis Koeiman, 301-405-3913

GREEN INUSTRY FIELD DAY

Thursday, July 16, 2015

American University, Washington, DC

For information: <http://greenindustryseminar.org/>

PGMS SUMMER EDUCATION SEMINAR

August 3-5, 2015

University of California Davis, Sacramento, California

For information, visit: <http://pgms.org/upcoming-events/seminar-and-site-visit-series/>

PGMS SCHOOL OF GROUNDS MANAGEMENT

October 21-24, 2015

Louisville, Kentucky

For information, visit: <http://pgms.org/>

N. Grove Teates, Jr.

ATHLETIC FIELD CONSULTANT TO OWNERS AND ARCHITECTS
"KNOWLEDGE SAVES"

grove@ngtconsulting.com

5313 BROOKEVILLE RD., GAITHERSBURG, MD 20882

301-963-8833 office
301-908-8350 cell



pogo organics
Beneficial MicroOrganisms
The Biological Approach to Plant & Land Stewardship

Compost Tea
Production, Equipment & Materials
(301) 774-2968 www.pogoorganics.com

PARTIALLY COMPOSTED DAIRY MANURE AVAILABLE

Partially Composted Dairy Manure with Bedding Available in Poolesville

Total available: 6000 ft³

Minimum pick-up: 300 ft³

\$15 loading fee per truck load
(discount available for larger amounts)

Most recent analysis 8/21/14:

Total Nitrogen: 1.359% (27.182 lbs/ton)
Ammonium Nitrogen: 0.160 % (3.209 lbs/ton)
P2O5: 0.466% (9.316 lbs/ton)
K2O: 0.718% (14.351 lbs/ton)


Contact Amanda Laudwein if interested for farmer's contact info.

Amanda's contact information - email: laudwein@umd.edu or
phone: 301-590-2840



www.roughbros.com/maintenance

ROUGH GREENHOUSES GREENHOUSE & CONSERVATORY
CONSTRUCTION / DESIGN / MAINTENANCE
Rob Tanzer/513.618.7275/rtanzer@roughbros.com



T1204A1760

TRUSTED BY ARCHITECTS & DESIGNERS FOR 35 YEARS

COUNTRY CASUAL
TEAK GARDEN and SITE FURNISHINGS

Visit our local
Gaithersburg showroom
800.284.8325 or
www.CountryCasual.com

MEET OUR MEMBERS!



Marie Rojas has been providing Integrated Pest Management services for homeowners, nursery growers and property managers through her company, Borders & Butterflies, for over 16 years. Marie joined PGMS in 1998 and has served on the Board in various capacities for years. She also serves on the Environmental Cluster Advisory Board for Montgomery County Public Schools. Marie has been a Montgomery County Master Gardener since 1994. In addition to gardening and cooking, she enjoys kayaking, hiking, and fishing. She also keeps bees on her 92 acre farm in western Montgomery County.



Amanda Laudwein, a PGMS board member and member since 1998, has been a nutrient management advisor with University of Maryland Extension since November 2002. She also had an integrated pest management business for 14 years, much of that time working closely with Marie Rojas (featured above). Amanda has been married for 35 years this year to John and they have lived in the same house in Silver Spring for 30 of those years. They have three children, Michael, Kate (married to Chris and due to deliver the first grandchild in May) and Evelyn. Amanda has been on the board much of the time since becoming a member and served as President in 2004-05. She also recently did a stint providing beverages for the monthly meetings and other social events. She is orchestra manager and plays the viola for Montgomery Philharmonic, Inc. which she helped found, is active in the Victorian Lyric Opera Company's orchestra, has been a Master Gardener since 1999 and rarely has time to garden!



Adam Newhart has been a PGMS member since 2005. He is a graduate of the University of Maryland Institute of Applied Agriculture program with a certificate in Landscape Management and a Bachelor's Degree in Management. He is a Maryland Certified Professional Horticulturist, an ISA Arborist, and an ISA Certified Tree Risk Assessor. He lives just outside of Frederick, MD with his wife Heather and two kids, Jacob and Olivia. Adam enjoys hiking, fishing, golfing, and going to as many Terrapin athletic events as possible. He loves being part of the best professional organization out there with the PGMS DC Branch and finds it such a great group of professionals and friends.

Educational & Employee Training Opportunities

LANDSCAPING CLASSES AT MONTGOMERY COLLEGE

Do you--

Want to learn about designing gardens & landscapes with digital tools?

Want to incorporate more native plants in your business or home landscape?

Want to learn the newest techniques for plant propagation like hydroponics and tissue culture?

Want to learn how to identify and select the best trees, shrubs, and ground covers for good results?

If any of these "want to's" is on your list for 2015, the Montgomery College Landscape Technology program is offering great classes to help you meet your goals—and 3 class locations to make learning more convenient!

Classes are offered at the Germantown & Takoma Park Campuses and at the Agricultural History Farm Park in Derwood.

For further information contact:

Steve Dubik, 240-567-7803

steve.dubik@montgomerycollege.edu

Express Certification

Your FAST track to **legal** pesticide application.

Online Training at your convenience!

Take the exams in as little as two or three months.

Approved for Maryland, Virginia,
and West Virginia.

(See website for details <http://expresscert.net>)

Contact: David Jefferson

301-775-0512

expresscert@comcast.net



INSTITUTE OF APPLIED AGRICULTURE

FIND YOUR SWAG – ADVANCE YOUR CAREER

University of Maryland
2123 Jull Hall
College Park, MD 20742
iaa.umd.edu
Phone: 301-405-4686
iaa-request@umd.edu

UNIVERSITY OF MARYLAND / FEARLESS IDEAS

SPONSORS



Check us out at our new
satellite location in
Montgomery County!

Opened for fast, easy, pick up!

Main Warehouse

Fulton, MD

20759

800-553-2719

240-554-0366 (f)

Satellite Center

Gaithersburg, MD

20879

301-355-6366

301-355-7446 (f)

7620-A

Rickenbacker Dr.

CALL ON DAVEY FOR ALL YOUR TREE CARE NEEDS.



Providing Quality Tree and Lawn Care
Services for Commercial & Residential
Properties for More Than 125 Years.

- Complete Tree and Shrub Care
- Quality Pruning
- Deep-Root Fertilization
- Insect & Disease Management
- Lawn Care Programs
- Certified Arborists

www.davey.com



301-869-6884

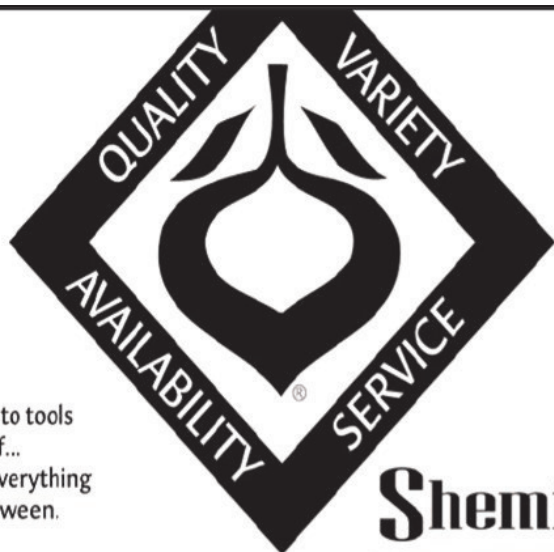
Washington D.C.

703-327-9060

N. Virginia

Thank you sponsors

(those listed here and throughout the newsletter!)



Trees to tools
to turf...
and everything
in between.

Shemin is
the Landscape Supply
Company.

Come see how we can
help you grow.

Shemin

Thirty locations to serve you including

Burtonsville, MD • (301) 421.1220
White Marsh, MD • (410) 335.1990
Manassas, VA • (703) 631.8133
Gainesville, VA • (703) 754.3729

www.shemin.net

THE LANDSCAPE SUPPLY COMPANY SM

Flower Bulb displays for retail Garden Centers featuring:

The Biltmore Estate horticultural collection, pre-packaged and loose
display boxes, crates of tropical and holiday items

Flower Bulbs for your Garden Designs and Greenhouse Operations

Tulips	Crocus	Elephant Ears
Daffodils	Fritillaria	Dahlias
Hyacinth	Cannas	Lilies
Alliums	Callas	bare-root perennials

Netherland Bulb Co is one of the largest exporters of Dutch flower bulbs.
Still family owned and operated on both sides of the ocean offering the
highest quality bulbs at the most competitive prices.

Your area representative is listed below:

Don Tyson, Landscape Accounts

Email: dtyson@netherlandbulb.com

Phone 610-737-0381

Fax 610-252-9970



Netherland Bulb Co., Inc



Have something you want to announce to fellow PGMS DC Branch members?

Have a special remembrance of one of our past meetings? How about a special picture? We'd love to share through our monthly newsletter for you!

Contact our Editor, Michael Gildea (mikeg@chevyclub.org)

NEXT PGMS-DC BRANCH EVENT



WANT TO SAVE GAS?

Or just like the company of a carpool?

Contact Amanda Laudwein a week

before the meeting to make arrangements:

laudwein@umd.edu, 301-590-2840 or 240-398-8870

Location: Tudor Place Historic House and Garden
1644 31st Street NW
Washington, DC 20007

Program: Garden Tour

Host: Suzanne Bouchard

Sponsor: SavATree and Gardens Remembered

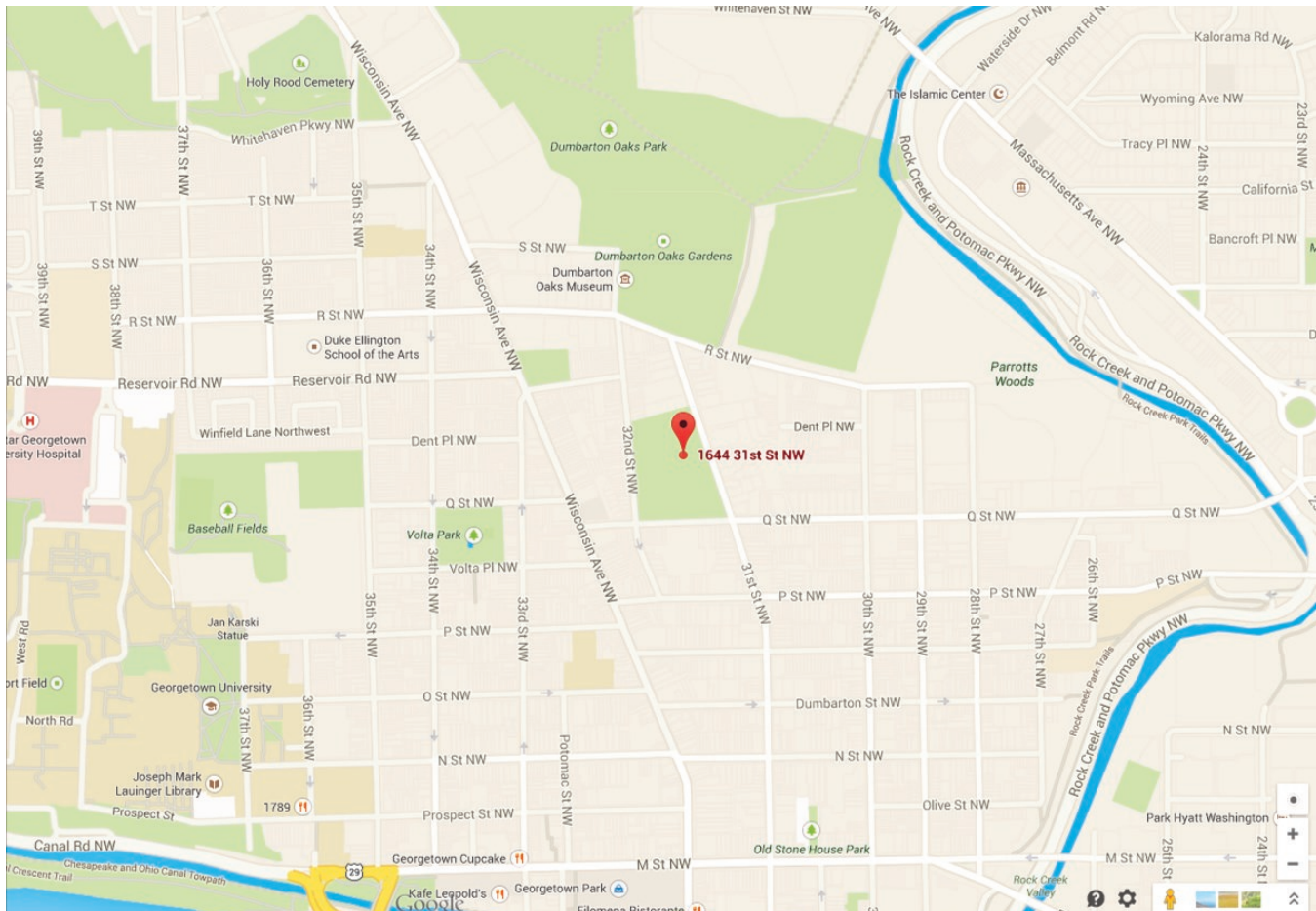
RSVP: Please RSVP to Amanda Laudwein at 301-590-2840, 240-398-8870 (cell),
or laudwein@umd.edu

Directions:

By Car - The Tudor Place main gate is on 31st Street NW between Q and R Streets in upper Georgetown. Nearby curbside parking (free; two-hour limit) is usually ample. There are pay-to-park spaces on nearby Wisconsin Avenue and connecting streets, as well as commercial lots. For further parking information visit Georgetowndc.com.

By Bus - Metrobus: D1, D2, D3 (along Q Street), G2 (along P Street), 31, 32, 36 (along Wisconsin Avenue)
or by DC Circulator: Georgetown-Union Station route

By Metro - red line: Dupont Circle (walk: P Street to right on 31st Street)
blue/orange line: Foggy Bottom (25-minute walk: Pennsylvania Ave. bears left onto M Street to right on 31st Street)
blue/orange line: Rosslyn (35-minute walk crossing Potomac on Key Bridge)
Metrobus connections are also available from these stations.



PHOTOS



Top: Lunch with Jack Monday at Hershey's Restaurant in Gaithersburg, Maryland

Middle: Ralph D'Amato, Ludy Schneider, and Jack Monday met with several branch members for lunch on March 10

Right: A group from the DC Branch enjoyed lunch at Hershey's Restaurant



PHOTOS



Above: March raffle organizer, Joe Proskine with one of the lucky winners, Carin Celebuski



Left: Chuck Schuster gave a presentation on the Maryland Nutrient Management law at the March meeting

Thank you to Danny Felice and SynaTek for sponsoring the March Meeting!





DC Branch, Inc.

<http://www.pgms.org/branchdc>

The mission of the PGMS D.C. Branch is to foster integrity and excellence in grounds management by promoting professional development through education programs, networking, community service, and fellowship.



DC Branch News
1708 Grandads Lane
Silver Spring, MD