



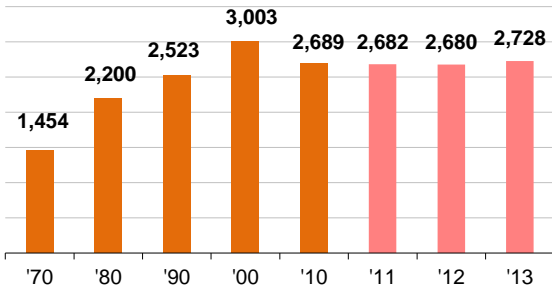
# CITY OF KETCHUM

## Economic Profile

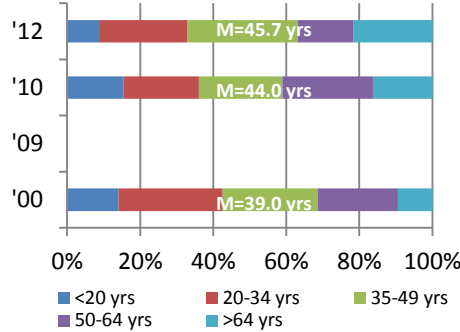
# 2013

### CITY DEMOGRAPHICS

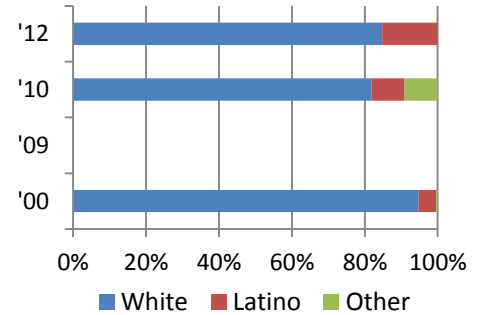
#### Population



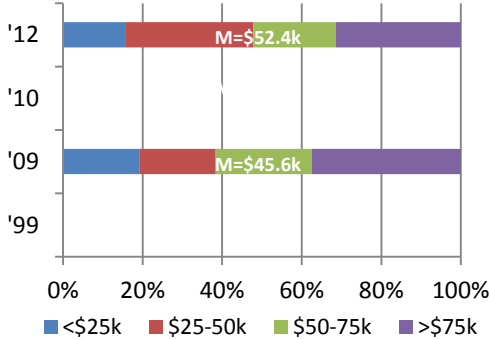
#### Age



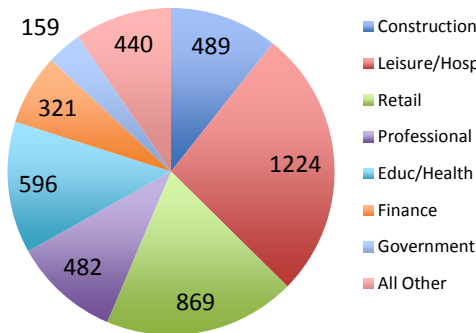
#### Race/Ethnicity



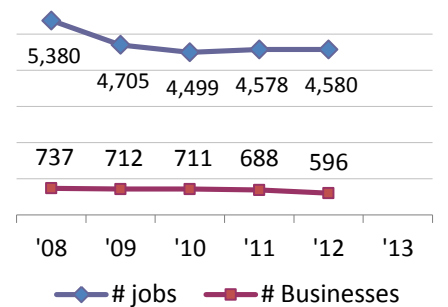
#### Household Income Distribution



#### Jobs by Industry Sector (2012)



#### Jobs & Businesses (2012 #)



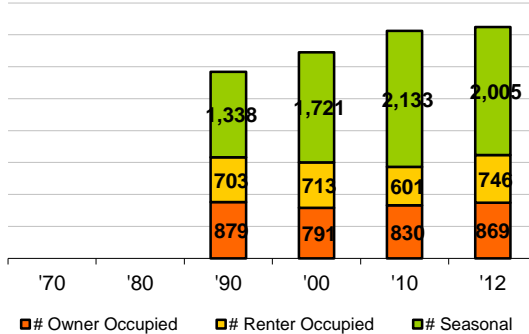
Median HH Income (2012) \$ 52,464

Total Employed: 4,580 -15% chng '08-'12

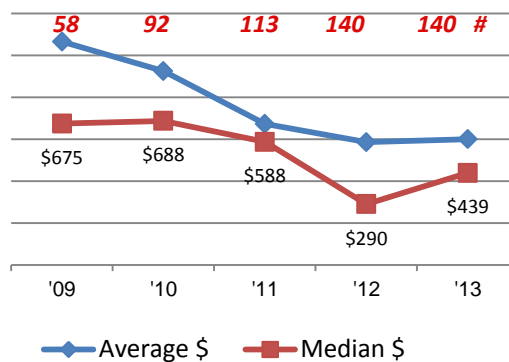
BC Unemployment Rate: 5.6%

### CITY HOUSING STOCK

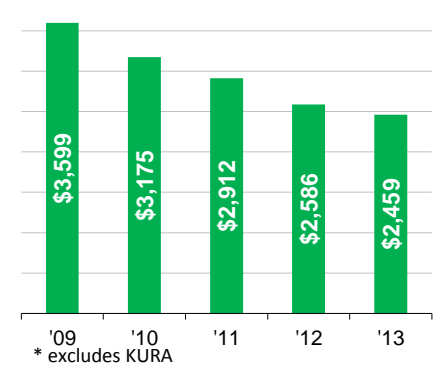
#### Housing Stock Utilization(# units)



#### Single Family/Condo Sales (\$000 & #)



#### Total Assessed Tax Value\* (\$m)



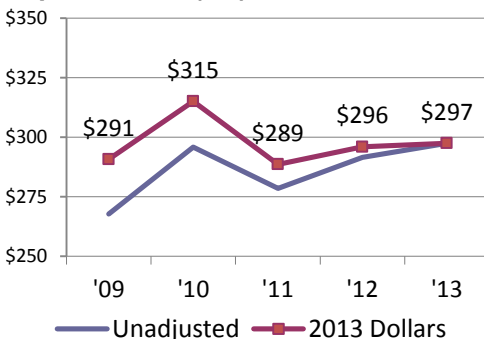
Total Housing Units ('12): 3,620  
Avg Household Size ('12): 1.68

3-BR Rental/mo: \$ 2,131  
% change '12-'13: 0%

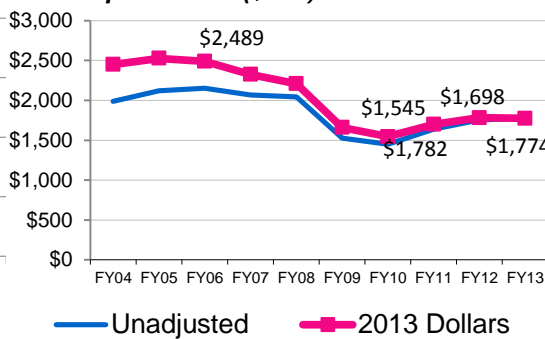
Assessed Residential Value (\$m): \$2,136  
Assessed Commercial Value (\$m): \$333

### CITY BUSINESS ACTIVITY

#### Reported Sales(\$m)



#### Local Options Tax (\$000)

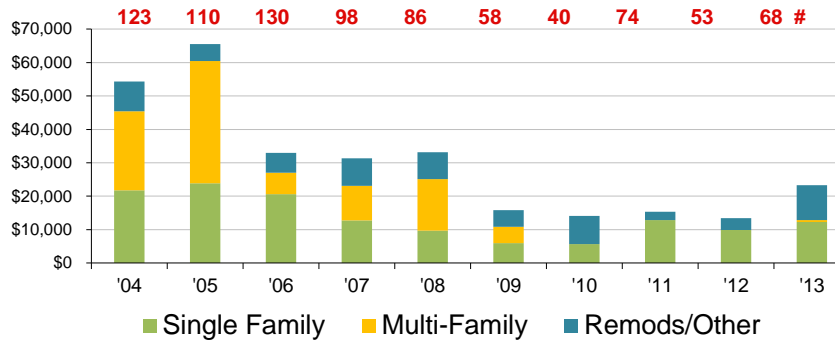


#### Business License Changes (#cumulative)

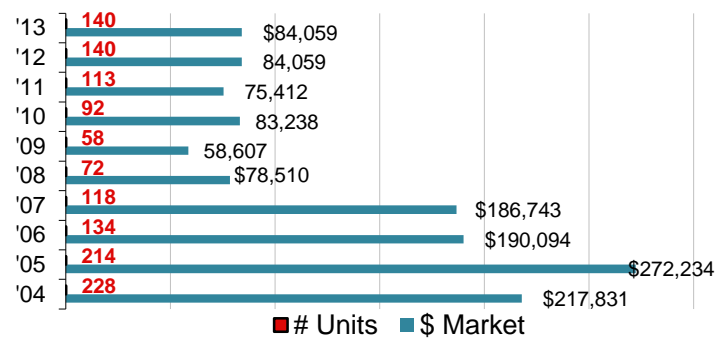


## CITY RESIDENTIAL ACTIVITY

### Residential Building Permits (\$000 & #)

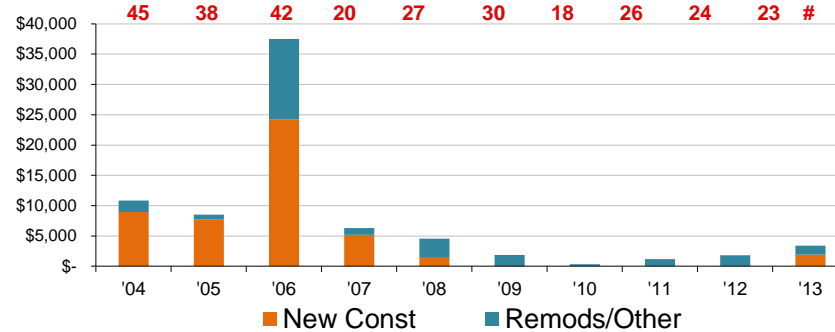


### Residential Sales Transactions (\$000 & #)

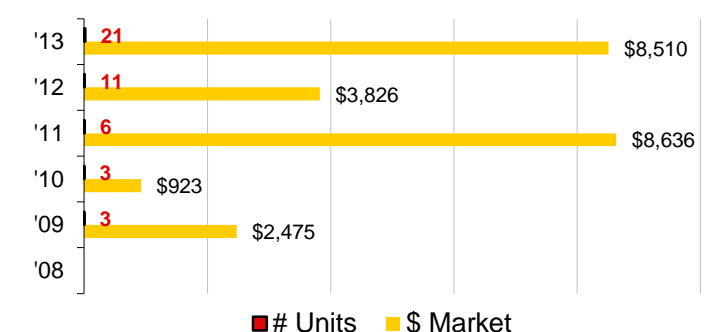


## CITY COMMERCIAL ACTIVITY

### Commercial Building Permits (\$000 & #)

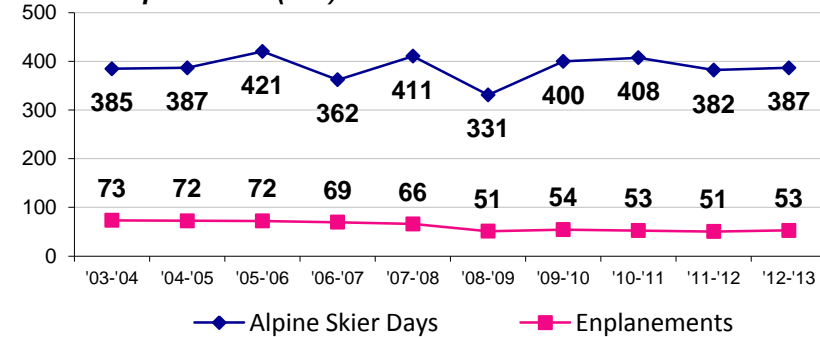


### Commercial Sales Transactions (\$000 & #)

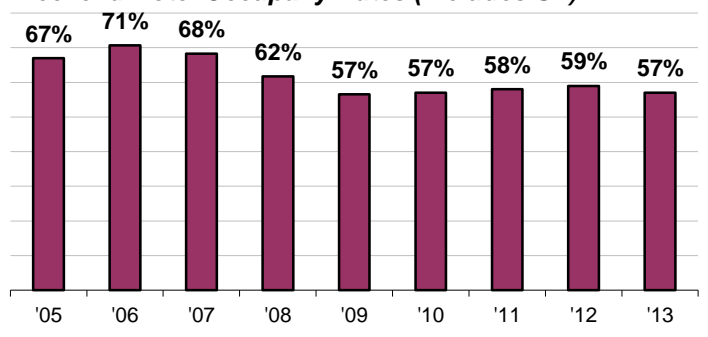


## CITY TOURISM MEASURES

### Skier & Airport Visits (000)

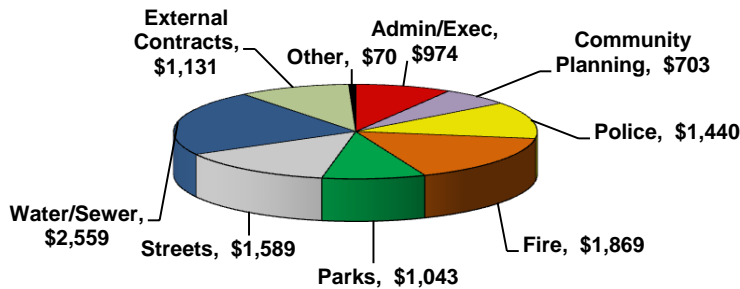


### Weekend Hotel Occupancy Rates (includes SV)

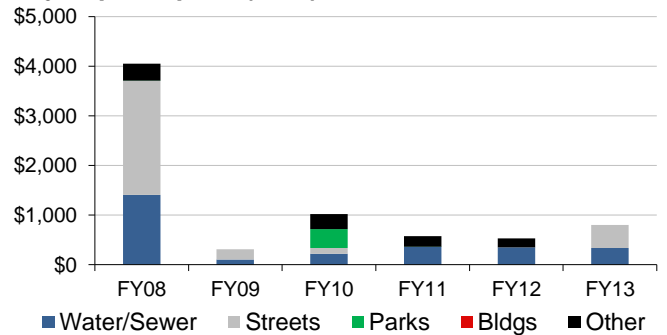


## CITY GOVERNMENT ACTIVITY \*

### City Revenue Spend FY'12 (\$11.4m)



### City Capital Spend (\$000)



\* Includes share of Water & Sewer Districts

## OTHER CITY STATISTICS

### FIVE YEAR TRENDS:

	2008	2013
Land Area (acres)	1,919	2,080
Property Tax Rate (\$ per mil)	\$4,753	\$7,892
Blaine Unemployment Rate	3.6%	5.6%
Largest Employers:	1 YMCA 2 Atkinson's 3 Webb Landscape 4 Smith Sport Optics 5 Mountain Rides 6 City of Ketchum	

### RELATIVE COMPARISONS (2010):

	Blaine	Idaho	U.S.
Population Density (per square mile)	8	19	87
School District Spend (\$000 per Pupil)	\$ 16	\$ 7	\$ 10
Bachelors Degree or Higher (%)	43%	24%	28%
Mean travel time to work (minutes)	17	20	25
Residential Electrical Rates (\$/kWh)	\$ 0.06	\$ 0.07	\$ 0.12
Unemployment Rate (%)	8.9%	8.8%	9.6%
Serious Crime Rate (per 100,000)	5.6%	2.7%	5.2%
Per Capita Income (\$000)	\$ 55.1	\$ 32.1	\$ 40.2