



2014 - 2015  
Year in  
Review



the CHICAGO  
NETWORK

Connecting Chicago's Women Leaders

# the CHICAGO NETWORK

Connecting Chicago's Women Leaders

## TABLE OF CONTENTS



**1.**  
Welcome



**2.**  
Membership  
Snapshot



**3.**  
New  
Members



**4.**  
Launch  
Pad



**5.**  
Future  
Leaders



**6.**  
Women in  
the Forefront



**7.**  
Women  
on Boards



**8.**  
Census



**9.**  
Programs



**10.**  
TCN  
Volunteers

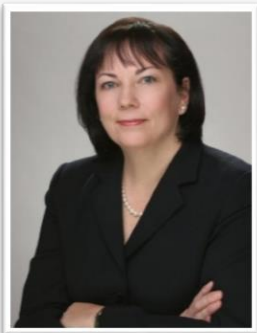


**11.**  
In Memoriam



**12.**  
Testimonials  
TCN Staff

# WELCOME 2014-2015 YEAR IN REVIEW



**From Kate Bensen, CEO**

As the preeminent organization for Chicago's leading professional women, we are compelled to connect with each other, advance our civic, business and philanthropic communities and inspire the next generation of women leaders.

Most of you know that The Chicago Network was established in 1979 by eight founding members, and began with 113 exceptional women. What you might not know is that the founders envisioned an organization with no committees, no rules, and no newsletter. "Everything would be solved

with three phone calls." Today's Network, now more than 450 strong, requires a bit more infrastructure, and we still connect Chicago's most senior women leaders using all kinds of technology as well as that underrated instrument, the telephone. And, we wish that truly everything could be solved with three phone calls.

As we pay tribute to our 36th year of The Chicago Network and bring you our 2014-2015 Year in Review, there is much to celebrate: an inspiring roster of new members, a portfolio of well attended programming, a voice on issues in women's leadership, and a new home for the Network offices. December 15, 2015 marks our one-year anniversary at 737 North Michigan Avenue, where our members and staff enjoy light-filled space in an iconic structure with views of the Hancock Building, Water Tower and lakefront, as well as guest space for member meetings. It is a space emblematic of our progress.

Perhaps most exciting is our increased focus on paying it forward by cultivating the next generation of women leaders. I can think of no organization better equipped to help these talented women reach their full leadership potential than The Chicago Network.

We hope you enjoy this Year in Review...and stay tuned to the year ahead!



**Kapila Anand,  
Chair 2014-2015**



**Donna Thompson,  
Chair 2015-2016**

We couldn't be more thrilled to take a pause and engage you, fellow members, on just some of the highlights from The Chicago Network's 36th year, all in one interactive place. This piece includes photo and video content in addition to a few key stats for TCN. We hope you come away with a better picture of all that YOU are a part of and what TCN can do for you as well as the next generation of women leaders.

Since 1979, we have selectively and strategically grown our membership to more than 450 of the most senior women leaders, and now we enter our final year operating under our Strategic Plan pillars:

- 1. Become a recognized thought leader on issues of women's leadership in the media, civic, nonprofit and business communities in Chicago
- 2. Foster greater member engagement
- 3. Attract and retain a membership of powerful women leaders
- 4. Continue to professionalize TCN and its governance

So we invite you to come inside and see how we're fulfilling these intentions as we mobilize to dive more deeply into the current fiscal year. As always feedback is welcome - Join us!

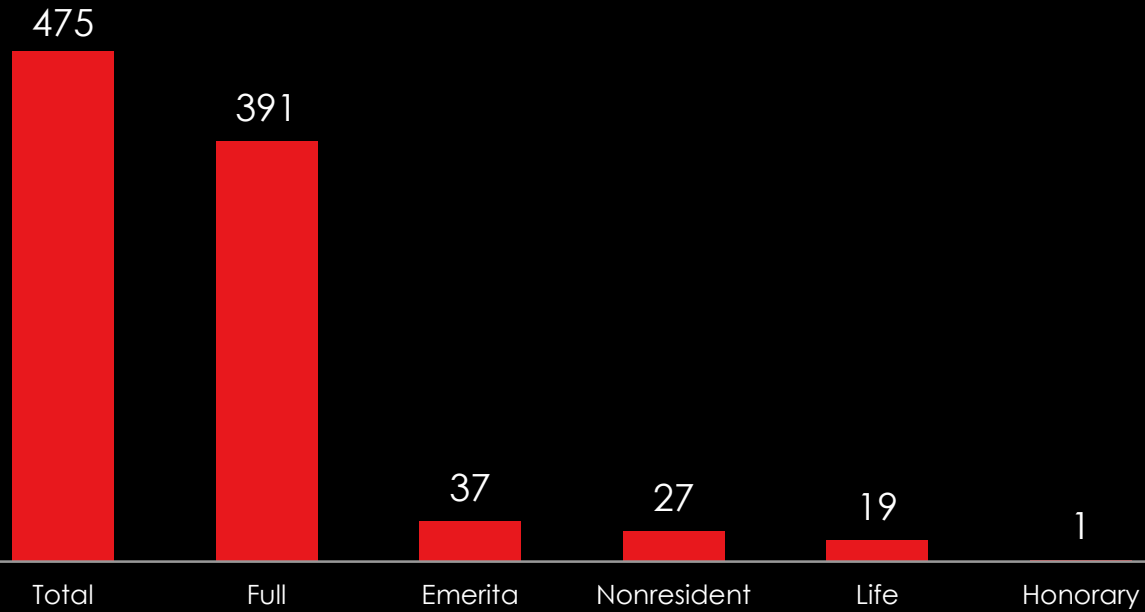
**& THANKS TO OUR 2014 – 2015 BOARD OF DIRECTORS**

Kapila Anand, Chair  
Donna Thompson, Vice Chair  
Ann E. Ziegler, Secretary/Treasurer  
Jane DiRenzo Pigott, Census Chair  
Carol Bibb, Communications Chair  
Fran Edwardson, Governance Chair  
Kathryn Sullivan, Membership Chair  
Elizabeth Connelly, Program Chair

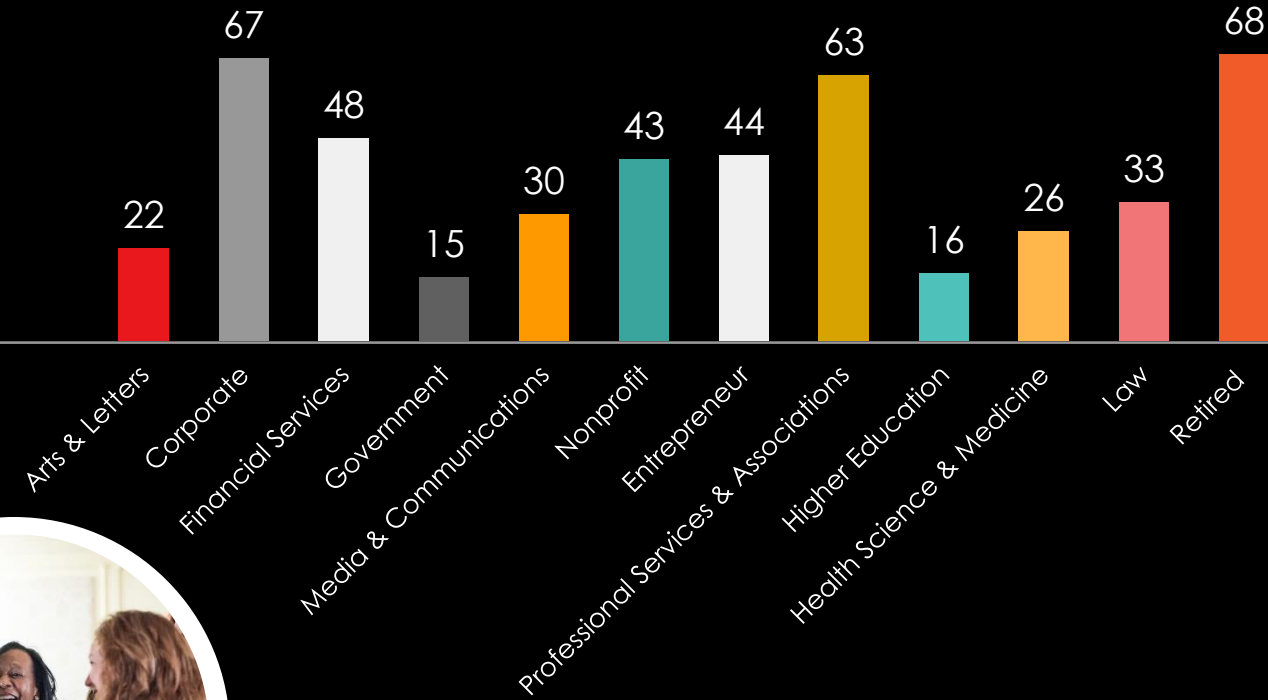
Mary Jo Herseth, Engagement Chair  
Tierney Remick, Women on Boards Chair  
Sue Bettman, Nominating Chair/Immediate Past Chair  
Linda Myers, WIFL Co-Chair  
Ellen Jordan Reidy, WIFL Co-Chair  
Phyllis Lockett, Launch Pad Chair  
Karen Case, Future Leaders Chair

**At Large**  
Emily Barr  
Gloria Castillo  
Kay McCurdy  
Carla Michelotti  
Gloria Santona  
Sheila G. Talton

Number of Members by Membership Type



Number of Members by Membership Subcommittee



Membership

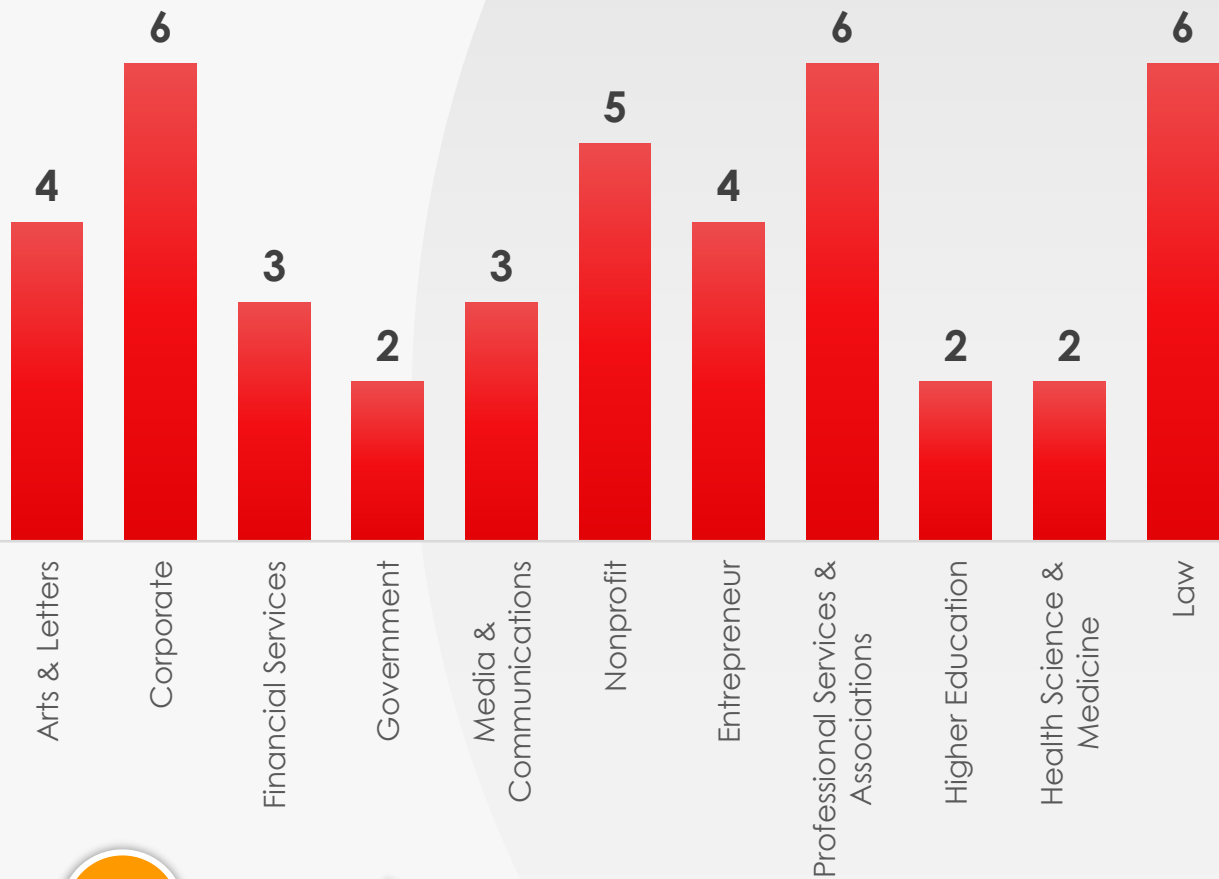


Snapshot



# NEW MEMBERSHIP SNAPSHOT

Number of New Members  
by Membership Subcommittee



# WHO JOINED THE NETWORK IN 2014 – 2015?

<b>MARY BAGLIVO</b>	Chief Marketing Officer, VP of Global Marketing, Northwestern University	<b>DENISE LYNCH</b>	President Property & Casualty Group, Kemper Corporation
<b>GINA BERNDT</b>	Regional & Managing Director, Board of Directors, Perkins + Will	<b>KATHY MABE</b>	President, Business to Business, Allstate Insurance Company
<b>LINDA BOASMOND</b>	President, Cedar Concepts Corporation	<b>JESSICA MALKIN</b>	Executive Director, Chicago Ideas Week
<b>MICHELLE BOONE</b>	Commissioner, City of Chicago Department of Cultural Affairs & Special Events	<b>MARY MEG MCCARTHY</b>	Executive Director, National Immigrant Justice Center
<b>DENISE CADE</b>	SVP, GC, Corp Sec & Chief Compliance Officer, SunCoke Energy, Inc.	<b>DORRI MCWHORTER</b>	CEO, YWCA of Metropolitan Chicago
<b>MARGO COOK</b>	Senior Executive Vice President, Nuveen Investments	<b>SUSANA MENDOZA</b>	City Clerk, City of Chicago
<b>GILLIAN DARLOW</b>	CEO, Polk Bros. Foundation	<b>THERESA MINTLE</b>	President & CEO, Chicagoland Chamber of Commerce
<b>ALEX DOUSMANIS-CURTIS</b>	Group Head-US Retail & Banking, BMO Harris Bank	<b>JILL NICHOLSON</b>	Partner, National Chair of Bankruptcy, Foley & Lardner LLP
<b>TAMMY DUCKWORTH</b>	Congresswoman, U.S. House of Representatives	<b>SHARON O'KEEFE</b>	President, University of Chicago Medical Center
<b>JANICE EBERLY</b>	James R. & Helen Russell Distinguished Professor of Finance, Kellogg School of Management, Northwestern University	<b>CATHY O'KELLY</b>	Shareholder, Vedder Price P.C.
<b>LISA EMERICK</b>	Associate Publisher, Crain's Chicago Business	<b>REBECCA PALLMEYER</b>	United States District Judge, U.S. District Court (rejoined)
<b>IRENE FOXHALL</b>	Executive Vice President Communications & Government Affairs, United Airlines	<b>ALISON RANNEY</b>	Principal, Koya Leadership Partners
<b>AMY FRANCETIC</b>	CEO, Clean Energy Trust	<b>ANNE REA</b>	Partner, Sidley Austin LLP
<b>WENDY FREEDMAN</b>	John & Marion Sullivan University Professor of Astronomy & Astrophysics, University of Chicago, Founding Chair, Giant Magellan Telescope Organization	<b>DEE ROBINSON</b>	President & Founder, Robinson Hill, Inc.
<b>ELIZABETH GLASSMAN</b>	President & CEO, Terra Foundation for American Art	<b>BRITTNEY SAKS</b>	Partner, National Leader Personal Finance, PwC
<b>MADELEINE GRYSZTEJN</b>	Pritzker Director, Museum of Contemporary Art	<b>JILL SCHAAF</b>	Corporate Vice President, President Renal Baxter Healthcare Corporation
<b>TERRY GUEN</b>	Principal Landscape Architect, Terry Guen Design Associates	<b>SMITA SHAH</b>	President & CEO, SPAAN Tech, Inc.
<b>GRACE HOU</b>	President, Woods Fund Chicago	<b>AMY ST. EVE</b>	United States District Court Judge, U.S. District Court
<b>MARY JOSEPHS</b>	Founder & CEO, Verit Advisors	<b>JACKIE TAYLOR</b>	Executive Director & CEO, Black Ensemble Theater Cultural Center
<b>CHRISTIE KELLY</b>	EVP & Global Chief Financial Officer, Jones Lang LaSalle	<b>MARY JANE THEIS</b>	Justice, Illinois Supreme Court
<b>CATHERINE KENWORTHY</b>	President & CEO, Interactive Health	<b>SUSANA VASQUEZ</b>	Executive Director, Local Initiatives Support Corporation Chicago (LISC)
		<b>CHRISTY WEBBER</b>	President, Christy Webber Landscapes



# LAUNCH PAD FOR WOMEN SENIOR LEADERS



## EMPOWERING EMERGING WOMEN LEADERS

Annual conference for TCN members and emerging women leaders in their organizations or networks.

April 13, 2015 at the Chicago Hilton and Towers

Total Attendance: 240



STRATEGIC PLAN HIGHLIGHTS

# LAUNCH PAD FOR WOMEN SENIOR LEADERS

## Empowering Emerging Women Leaders



Fortune 50's Most Powerful Women Navigate the C-Suite



Embracing Risk as a Career Catalyst



Networked Leadership

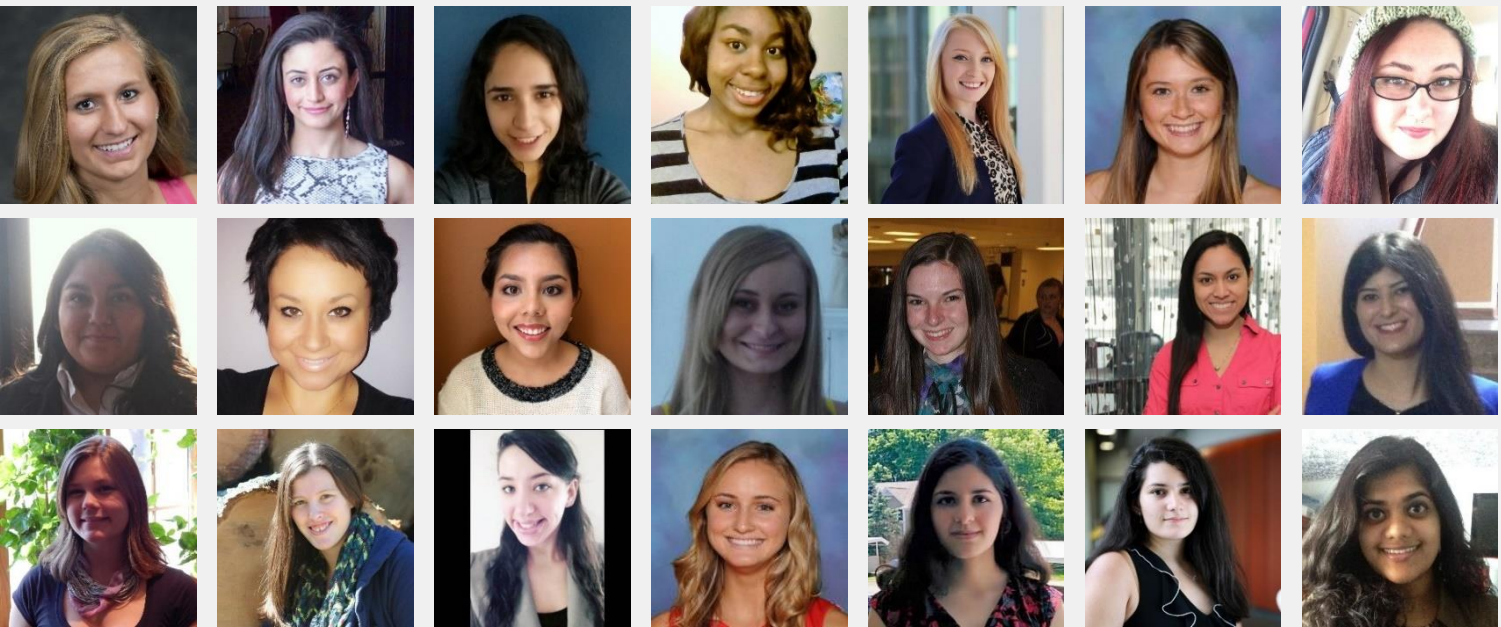


*"It was incredibly worthwhile and rewarding because of the content and connections. The women in the room brought different perspectives and were incredibly forthcoming in sharing their own questions, challenges and ideas."*  
- Launch Pad participant



# FUTURE LEADERS PROGRAM

## EMPOWERING FIRST GENERATION WOMEN COLLEGE STUDENTS



“One thing I've taken away is don't be afraid, ask questions, reach out and connect.”

Thu Nguyen  
University of Illinois-Chicago student

The Future Leaders Program gives participating college women a better understanding of the career opportunities available through site visits to TCN member host companies and organizations.

The students do not gain this experience anywhere else...

the CHICAGO NETWORK  
Connecting Chicago's Women Leaders

### Partner Companies



### Partner Schools



# WOMEN IN THE FOREFRONT LUNCHEON

**1,700**  
TOTAL ATTENDANCE  
(a record!)



## TCN'S SIGNATURE EVENT

WIFL funds our initiatives to pay it forward. In 2015, the sold-out event attracted the city's civic and business elite to hear from a prominent CEO and champion for women's leadership in business.

April 13, 2015 at the Chicago Hilton and Towers



PREMIER SPONSOR  
**DISCOVER**

PLATINUM SPONSORS  
JPMORGAN CHASE & CO.   
KIRKLAND & ELLIS LLP



the CHICAGO  
NETWORK  
Connecting Chicago's Women Leaders

*WOMEN in the  
FOREFRONT*  
LUNCHEON

MAURICE LÉVY  
Chairman & CEO,  
Publicis Groupe

DANA ANDERSON  
SVP & CMO,  
Mondelēz International

STRATEGIC PLAN HIGHLIGHTS

## WOMEN ON BOARDS



April 2015 Women on Boards Panel

Network members reported gaining **32** board seats, including Brunswick, Deere & Co. and Ulta Beauty



Since 2008, the Women on Boards initiative has helped prepare TCN members for corporate board service through education. During the 2014 – 2015 fiscal year, the WOB committee hosted two educational events that attracted more than 150 attendees.

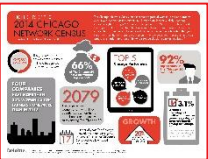


# 2014 CENSUS

TCN's Census monitors the progress of women in boardrooms, executive suites and as top earners at *The Chicago 50*, our city's 50 largest publicly reporting companies.



[Click Complete Census](#)



[Click Census Infographic](#)

**TOP PERFORMERS**  
ULTA BEAUTY  
MONDELÉZ INTERNATIONAL, INC.  
INGREDION INCORPORATED  
CDW CORPORATION  
KRAFT FOODS GROUP, INC.

OF NEW EXECUTIVE OFFICER POSITIONS, **ONLY 20%** ARE FILLED BY WOMEN

OF NEW DIRECTOR POSITIONS, **33%** ARE FILLED BY WOMEN

THE PERCENTAGE OF COMPANIES WITH A BOARD OF DIRECTORS THAT IS MORE THAN ONE-QUARTER WOMEN HAS INCREASED TO **20%**



## MEDIA COVERAGE

*"It's going to take women until 2079 to achieve equal representation in boardrooms and the executive ranks of these companies, according to The Chicago Network's annual census of local women executives."*  
– **Melissa Harris, Chicago Tribune**

*"In 2014, women held 17.9% of director positions at the 50 largest public companies in the Chicago area, according to the newest Census from The Chicago Network, with analysis conducted by Deloitte. While that figure comes in just slightly better than the nationwide stat of 17.7% of board seats filled by women, Chicago is far outpacing some cities like Los Angeles, where only 7.7% of directors are female."*  
– **Caroline Fairchild, Fortune**



Special thanks  
to HerStory  
series sponsor  
BMO Private Bank

HERSTORIES



**Julia Stasch**  
President  
MacArthur Foundation



**Aurie Pennick**  
Executive Director & Treasurer  
Field Foundation of Illinois, Inc.



**Carol Ross Barney**  
President  
Ross Barney Architects



**Jill Wine-Banks**  
Writer, Speaker, Consultant

## PROGRAMS THAT MEET MEMBERS' NEEDS



### FALL DINNER

**Lisa Donohue**  
CEO, Starcom  
**Joycelyn Winnecke**  
President,  
Tribune Content Agency  
at the Blackstone Hotel

### HOLIDAY DINNER

Civitas Ensemble featuring  
**Yuan-Qing Yu**  
Assistant Concertmaster,  
Chicago Symphony Orchestra,  
at the Casino

### ANNUAL MEETING & DINNER

**Azeeza Khan**  
CEO, Azeeza U.S.  
at the Peninsula Hotel

ON THE ANNUAL  
MEMBERSHIP  
SURVEY **91%** OF  
RESPONDENTS  
REPORT HAVING  
MADE MEANINGFUL  
CONNECTIONS  
WITHIN TCN

TCN RECEIVED  
**1,021** TOTAL  
MEMBER  
REGISTRATIONS  
FOR EVENTS  
THROUGHOUT THE  
FISCAL YEAR (NOT  
INCLUDING WFL)

We learned, we laughed, we  
dined in Network members'  
homes, and we engaged with  
and inspired each other. In  
addition to delving deep into  
roundtable discussions on  
topics such as advisory  
boards for entrepreneurs and  
healthcare for decision  
makers, TCN members  
gathered at area restaurants  
for camaraderie and  
conversation and  
experienced the opening  
night of the EXPO Chicago  
international art fair.



**AUDIT & FINANCE**

**Ann Ziegler,  
Chair**  
Carol Bibb  
Kathryn Sullivan

**CENSUS**

**Jane DiRenzo  
Pigott,  
Chair**

**COMMUNICATIONS**

**Carol Bibb,  
Chair**

**ENGAGEMENT**

**Mary Jo Herseth,  
Chair**  
Sue Bettman  
Dianne Blanco  
Christine Bork  
Nadalie Bosse  
Madeleine Condit  
Kelly McNamara  
Corley  
Wendy DuBoe  
Therese  
Fauerbach  
Trina Gordon  
Maria Green  
Suzanne Isaacs  
Mary Laraia  
Michelle Larson  
Joan Lefkow  
Catherine Odelbo  
Lois Scott  
Toni Sandor Smith  
Maryann Waryjas  
Brooke Wiseman  
Brenda Wolf  
Kathleen Yosko  
Yuan-Qing Yu

**FUTURE  
LEADERS**

**Karen Case, Chair**  
Mary Beth Berkes  
Donni Case  
Karyn Esken  
Gail Hasbrouck  
Hedy Ratner  
K. Sujata

**GOVERNANCE**

**Fran Edwardson,  
Chair**  
Sue Bettman  
Gloria Castillo  
Anne Murphy  
Jill Bellavia Smart

**LAUNCH PAD FOR  
WOMEN SENIOR  
LEADERS**

**Phyllis Lockett,  
Chair**  
Rebecca  
Weinstein Bacon  
Jodi Caro  
Marilyn Lissner  
Renetta McCann  
Z. Scott  
Michelle  
Stephenson

**MEMBERSHIP**

**Kathryn Sullivan,  
Chair**  
Phyllis Cochran  
Debora de Hoyos  
Beth Harris  
Carrie Hightman  
Jane Mentzinger  
Nancy Pacher  
Sylvia Pozarnsky  
Mrinalini Rao  
Julie Scott  
Joyce St. Clair  
Martha Tedeschi  
Joycelyn  
Winnecke  
Maria Wynne

**PROGRAM**

**Elizabeth Hartigan  
Connelly, Chair**  
Paula Allen-  
Meares  
Patricia Bobb  
Carole Brite  
Mary Ann Hynes  
Marci Kaminsky  
Mary Laraia  
Marilyn Lissner  
Karen MacKay  
Elaine Maimon  
Kay McCurdy  
Maura O'Hara  
Lynn Osmond  
Anna Rappaport  
Julie Silverstein  
Robin Steans  
Julie Tye  
Cheryl Whitaker

**WOMEN IN THE  
FOREFRONT  
LUNCHEON**

**Linda Myers,  
Co-Chair**  
**Ellen Jordan Reidy,  
Co-Chair**  
Patricia Bobb  
Julie Coffman  
Anne Edwards-  
Cotter  
Maria Green  
Beth Reese  
Julie Scott  
Jill Smart  
Kim Taylor  
Julie Vander  
Weele

**COMMITTEES**

**THANKS TO OUR 2014 – 2015 VOLUNTEERS!**



## ARTS & LETTERS

### **Martha Tedeschi, Chair**

Lynn Osmond  
Elizabeth Dunlop Richter  
Laura Sadler  
Joyce Simon  
Sheridan Turner  
Kristina Valaitis

## CORPORATE

### **Phyllis Cochran, Chair**

Kathy Donofrio  
Ann Drake  
Diane Morefield  
Diane Offereins  
Laurie O'Shea  
Mary Lee Schneider  
Ann Ziegler

## ENTREPRENEUR

### **Julie Scott, Chair**

Rose Mary Bombela-Tobias  
Rona Borre  
Mary Burke  
Barbara Byster  
Anne Edwards-Cotter  
Michele Honomichl  
Carol McCarthy  
Marsha McVicker  
Ellen Jordan Reidy  
Ellen Rudnick  
Renee Velasquez Togher

## FINANCIAL SERVICES

### **Joyce St. Clair, Chair**

Tracey Benford  
Mary Jo Herseth  
Lisa Johnson  
Marita Sullivan  
Julie Vander Weele

## GOVERNMENT

### **Carrie J. Hightman, Chair**

Melissa Bean  
Leticia Peralta Davis  
Lori Healey  
Patricia Brown Holmes  
Elaine Leavenworth  
Judith Rice  
Z. Scott  
Corinne Wood

## HEALTH, SCIENCE & MEDICINE

### **Mrinalini Rao, Chair**

Jan Berger  
Dianne Blanco  
Mitra Dutta  
Gail Hasbrouck  
Vicky Kalogera  
Carol Lind  
Michelle Stephenson  
Irene Thompson

## HIGHER EDUCATION

### **Beth Harris, Chair**

Donna Carroll  
Elaine Maimon  
Stephanie Pace Marshall  
Marilyn McCoy

## LAW

### **Debora de Hoyos, Chair**

Mary Ann Hynes  
Susan Levy  
Maura Ann McBreen  
Maryann Waryjas

## MEDIA & COMMUNICATIONS

### **Joycelyn Winnecke, Chair**

Karyn Esken  
Beth Fenner  
Jennifer Graves  
Kary McIlwain  
Nancy Ruscheinski  
Alison Scholly

## NON-PROFIT

### **Jane Mentzinger, Chair**

MarySue Barrett  
Jean Butzen  
Kate Maehr  
Maria Pesqueira  
Toni Sandor Smith  
Julie Tye

## PROFESSIONAL SERVICES & ASSOCIATIONS

### **Sylvia Pozarnsky, Chair**

Donni Case  
Julie Coffman  
Nina Hancock  
Stacy Janiak  
Jackie Koo  
Sheila O'Grady  
Linda Searl  
Jill Bellavia Smart

# MEMBERSHIP SUBCOMMITTEES

THANKS TO OUR 2014 – 2015 VOLUNTEERS!





## Sue Gin

1941– 2014

Founder & CEO  
Flying Food Group  
& Founding Member  
of The Chicago Network

*"We don't do things that are easy."*



## Cathy Coughlin

1957 – 2015

Former Senior Executive Vice  
President and Global Marketing  
Officer, AT&T & Member of The  
Chicago Network since 2005

*"We've done a lot, but our fight is far from over."*

IN MEMORIAM



# TESTIMONIALS

*"As a new member, the Fall Dinner was my first Network event. What a great balance of energy; learning from and connecting with Chicago's foremost women business leaders."*

**– Anonymous TCN Member**

*"The Future Leaders company visits were excellent. It opened my eyes to the jobs available in the work force, and all the different companies there are to work for. I also loved visiting to be able to go into the business and get a behind the scenes look. Finally, it was great being able to meet the women of the company."*

**– Future Leaders student participant**

*"Very thankful to have participated in the Launch Pad conference. It was incredibly worthwhile and rewarding because of the content and connections. The women in the room brought different perspectives and were incredibly forthcoming in sharing their own questions, challenges and ideas."*

**–Launch Pad for Women Senior Leaders participant**

*"It was awesome being able to sit across from Leo Burnett's senior most women and pick their brain on their career, their education, their struggles, etc."*

**– Future Leaders student participant**

*"TCN programs are usually thought-provoking. Always time for great networking."*

**– Anonymous comment on Annual TCN Member Survey**

**TCN  
STAFF**

**Kate Bensen**  
President & CEO

**Daniela Burgos**  
Executive Assistant

**Elizabeth Stigler**  
Communications Director

**Sarah Wallace**  
Communications Associate

