



Plan 9

A simple guide to the nine essential items to help you shelter-in-place in the event of an emergency.

1 Water

Done

Bottled water. One gallon, per person, per day, for drinking and sanitation.

- Keep the water in a cool, dark place and change to a fresh supply every six months.



2 Food

Done

Nonperishable food. A supply of at least 7 days per person.

- Ready to eat canned meat, fruit and vegetables
- Canned or boxed juices
- Powdered milk and soup
- Crackers, granola, trail mix



3 Radio

Done

A battery-powered radio for listening to news and weather.

- Consider buying a crank-operated or solar-powered radio.
- Don't forget extra batteries! Buy them in advance in case they're in short supply.



4 Medications

Done

At least a week's supply of any prescription medicines you're taking.

- Be sure to note the expiration date so you don't keep them past their date.



5 Clothes

Done

At least one change of clothes and footwear per person.

- Consider packing blankets, rain gear and outerwear in case of inclement weather.
- If you wear glasses, consider packing a spare pair.

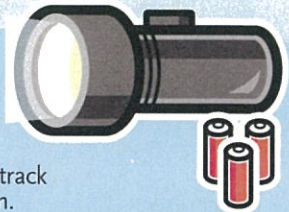


6 Flashlight

Done

Keep a bright flashlight in case there's no electric power.

- Consider getting a lantern-style light for hands-free use.
- Don't use candles! They're a fire hazard and are easy to lose track of when the lights come back on.



7 Hygiene Items

Done

Basics like soap, toilet paper, toothbrush and toothpaste.

- Moist towelettes can be useful for quick sanitation.

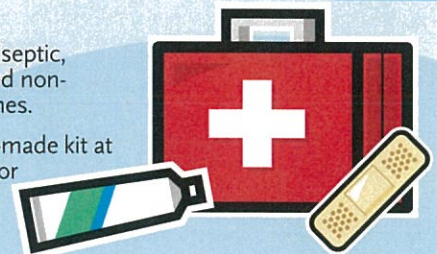


8 First-Aid

Done

Basics such as antiseptic, gloves, bandages and non-prescription medicines.

- You can buy a pre-made kit at most pharmacies or grocery stores or make your own.



9 Can Opener

Done

Make sure it's a manual can opener in case there's no electric power.

- Consider buying items with a pull-top opening.
- Consider adding a pair of scissors to help open other packing items.



For more information about emergency preparedness, contact any of the following organizations:

Hawaii Department of Health	www.hawaii.gov/health
Hawaii State Civil Defense	www.scd.hawaii.gov
Oahu Civil Defense (includes links to neighbor islands)	www1.honolulu.gov/dem/
American Red Cross	www.redcross.org
Centers for Disease Control	www.cdc.gov
Disaster Assistance	www.disasterassistance.gov
Federal Emergency Management Agency	www.fema.gov
U.S. Department of Homeland Security	www.ready.gov