

## What's Inside:

### Page 2

*Assignments and Election Results*

### Page 3

*Fines, Happy Dollars, Hospitality, Prospective Member, Social Events*

### Page 4

*Club Calendar and Weekly Numbers*

### Page 5

*Future Kiwanian Makes Appearance?*

### Page 6

*Club Info and Thanks to Our Advertisers*



# Kiwanis®

## Kiwanis Club of Ann Arbor

*Ann Arbor News 2015 Deal of the Year Retail Award Winner*

Volume 7, Issue 36

June 6, 2016

### Today's Program...

#### Summer Festival and Art Fair:



**Amy Nesbitt**

**Deb Jones** introduced Amy Nesbitt, Executive and Artistic Director of the AA Summer Festival, and Maureen Riley, Executive Director of the Original Ann Arbor Street Art Fair, who told us about the history of both events and what to expect this year. Before joining the staff of the Summer Festival, Ms. Nesbitt was a National Talent Booking Agent. She said that former UM Regent Eugene Power and UMS Director Gail Rector conceived the idea for the Festival to provide cultural events for the community during the summer months. Top of the Park was conceived to provide intermission entertainment for Power Center concert goers. Both events were grand successes. Festival Events are presented in many venues around town while Top of the Park activities occupy a large area in front of the Rackham Building and along Ingalls Mall. While Festival events are ticketed with discounted tickets available to children and students, all Top of the Park events are free of charge. Many events are family friendly. Check out [A2SF.org](http://A2SF.org) for the calendar of events and for volunteer opportunities.

Maureen Riley served as Event Manager at The Palace of Auburn Hills and at Meadowbrook before coming to the Street Art Fair. The Original Art Fair started as an experiment in 1960. Since then it has been joined by the State Street Art Fair, the Guild Art Fair, the South University Art Fair and the Main Street Art Fair. All together more than 30 downtown and campus area blocks will be devoted to art from Thursday, July 21 through Sunday, July 24. The Original Art Fair is juried. Approximately 15% (200) of the artists who apply to the Fair are accepted each year. Live performances will be presented at stages at Ingalls Mall, South University and Main St. Go to [ArtFair.org](http://ArtFair.org) to check out schedules and volunteer opportunities.



**Maureen Riley**

### Next Week's Program...

**June 13**—*Kiwanis: Past, Present, and Future*. Speaker: Sue Petrisin, Kiwanis International President (East Lansing Kiwanis Club). Introduced by: **Ron Gardner**, past club president.

### Upcoming Programs...

- **June 20**—*WCHS Resources: The Museum on Main Street and the Argus Museum*. Speakers: Beverly Willis, WCHS P.R.; Cheryl Chidester, Argus Curator. Introduced by: **Kurt Schmerberg**.
- **June 27**—*New! Spectacular! Creative Laser Lighting*. Speaker: Mike Gould, Laser Artist. Introduced by: **Bob Barden, Jr.**
- **July 5 (Tuesday)**—*Our Dynamic Relationship with Israel*. Speaker: Ruth Gretzinger, UM; recently returned visitor. Introduced by: **Dale Leslie**.

### Meetings...

Past Presidents will meet after next Monday's meeting. Dues of \$25 are payable at the meeting. Please make checks payable to **Jerry Brown**.



**Kiwanis Club of Ann Arbor**  
CHARTERED IN 1921

**Officers and Directors**

**President:**

Betsy Ford

**President-Elect:**

Alan Burg

**Treasurer:**

Eloise Lavin

**Secretary:**

Kathie Wilder

**Immediate Past-**

**President:**

John Goff

**Board Members:**

Ray Argyle  
Kathy Barden-Perlberg  
Claire Dahl  
George Gilligan  
William Hampton  
Joseph Medrano  
William Robb  
Kenneth Shaw  
Richard Smit  
Ellen Webb



**Newsletter:**

**Editor**

Ann Mattson

**Photos**

Bill Robb

**Publisher**

John Kidle



Do you have news for the newsletter, or are you interested in advertising? Contact Publisher, John Kidle, at [jkidle@gmail.com](mailto:jkidle@gmail.com).

**ASSIGNMENTS for the COMING WEEK:**

<b>Officer of Day KCD</b>	John Dahl (subbing for Mark Wishka)
<b>Antiques</b>	Jane Talcott
<b>Beds &amp; Garden</b>	Kathy Stroud, Mike Anglin
<b>Dockers</b>	Need dockers! Show up about 9am and we will show you what to do.
<b>Sorters</b>	We need sorters, too! Show up and we will train you.
<b>Housewares</b>	Dan Dever, Andrea Kotch Duda
<b>Men's Clothing</b>	John Bassett, Dave LaMoreaux
<b>Books/Records</b>	John Schenk
<b>Office &amp; Medical</b>	Jim Mattson, Carl Dailey and crew
<b>Lamps</b>	Dennis Powers et al
<b>Electronics</b>	Bill Robb et al
<b>KCW</b>	<u>Friday</u> —Marianne D'Angelo, Larry French, Glenda and Ralph Maten, John Schenk, Carla Summers, Ellen Webb, Marcia Wells <u>Saturday</u> —Gordon Beeman, Kelly Bertoni, Jim Bloomquist, Marianne D'Angelo, Al Engerer, Gary Fulton, Deb Jones, Margaret Krasnoff, Evan LeRoy, Gerry Luke, Craig and Tracie Meisner, Amy Price, Mark Reed, Cliff Sheldon
<b>Vouchers</b>	Ellen Webb, Dot Cattell, Don Clewell, Matt Chaiken, Bob Johnson, Dave LaMoreaux, Max Ziegler
<b>Invocation</b>	Doug Ziesemer
<b>Greeters/Attend.</b>	Rose Marie Barhydt, Bill Hallock, Even Leroy, John Schenk (A)
<b>Hospitality</b>	Dave Hughes
<b>Cashier</b>	Martha Petroski

**Guests at Our Club...**

Prospective Member Gerry Luke, guest of **Dan Burroughs** and Christian Wire from Circle K. Welcome all!

**Announcements...**

**Club Elections:** The slate of candidates as proposed by the Nominating Committee for the 2016-17 Administrative Year which begins October 1, 2016, was elected. Congratulations to **President Alan Burg, Immediate Past President Betsy Ford, President-Elect Gretchen Preston, Treasurer Eloise Lavin, and Board Members Kathy Barden Perlberg, Ellen Webb, Deb Jones, Greg Meisner and Evan LeRoy.** Congratulations also to **Kathie Wilder** who will continue as Secretary.

**Fines...**

Everyone who did not serve our country during World War II. Only **R J Taylor** was exempt. Thanks for your service, R J.

**Happy Dollars...**

**Jerry McMahon** for his multi-use jumper cables; **Dale Leslie** for his son's birthday; **Jerry Brown** for 50 years of wedded bliss with Lyn; **Martha Petroski** for the eight remaining July 1 Purple Rose tickets; **Dave Drake** for being here where he can sit back and relax after a busy weekend Up North followed by an even busier week in the land of the trolls; **Jane Talcott** for **Sally Lamkin's** assistance as 192 Camp Placement campers were oriented for summer camp; **Margaret Krasnoff** for Mary Evans's assistance restoring donated doll houses. Margaret is hoping more folks will volunteer to help restore more doll houses in anticipation of a doll house raffle event this fall; **R J Taylor** for his granddaughter's birthday and for his move to a wonderful new home; **Kathie Wilder** for the UM Women's Softball Team's success and for singer **Judy Collins's** Kiwanis connections; **Harry Cross** for UM Softball and for his coin 'proof sets'; **Garry Donner** for visit to meeting by his wife Wendy and grandson Henry; and **Evan LeRoy** for passing important Certified Financial Planner test. He promised to actually pay his happy dollar, with 100% interest, next Monday.

**Stuff You Should Know...****Hospitality News:**

The Memorial Service for long time Kiwanian **Fred King** will be at 2:30 pm at KCW on Saturday, June 25. Everyone is welcome and encouraged to attend.

Long time Saline Kiwanian Betty Dannefell was surprised at the Saline Interclub on 6-6-16 with a birthday cake to celebrate her 90th birthday.

**Prospective Member:**

Gerald Luke has submitted his member application form. First publication.

**Social Activities:**

The Club's Annual Summer Picnic with **Max's** famous ribs will be on July 17 at noon at Pittsfield Park, 701 W. Ellsworth Rd, just west of S. State St. Everyone is welcome but sign up with **Max** so he knows how many ribs to glorify. Ribs, beverages, and place settings are provided. Please bring a dish to pass. The blessing will be offered at noon so plan to be there by noon.



*Max in action last year.*

**Kiwanis**  
Thrift Sale

Known worldwide as the place for the "funkiest" gift.

Check for Special Items on

**craigslist**

and

**ebay**

Every Week!

*Since 2004  
Over \$2,482,000  
in Proceeds from  
the Kiwanis  
Thrift Sale have  
been used to  
Benefit Our  
Community.*



**Lunch Time**

*Lunch is served  
beginning at 11:30am  
Come early... get a  
parking spot and extra  
time to enjoy the good  
food before the  
meeting starts at  
12:10pm*

# June 2016

Sun	Mon	Tue	Wed	Thu	Fri	Sat
			1	2 KCD Donations 9-12	3 Sale & Donations: KCW 9-1	4 Sale & Donations: KCD 9-12 KCW 9-1
5	6 AA Fests KCD Donations 9am-Noon	7	8	9 KCD Donations 9-12	10 Sale & Donations: KCW 9-1	11 Sale & Donations: KCD 9-12 KCW 9-1
12	13 Sue Petrisin KCD Donations 9am-Noon	14 Board Meeting 7pm <b>Flag Day</b>	15	16 KCD Donations 9-12	17 Sale & Donations: KCW 9-1	18 Sale & Donations: KCD 9-12 KCW 9-1
19 <b>Father's Day</b>	20 WCHS Museums KCD Donations 9am-Noon	21	22	23 KCD Donations 9-12	24 Sale & Donations: KCW 9-1	25 Sale & Donations: KCD 9-12 KCW 9-1
26	27 Lasers KCD Donations 9am-Noon	28	29	30 KCD Donations 9-12		

# July 2016

Sun	Mon	Tue	Wed	Thu	Fri	Sat
					1 Closed	2 Closed
3 Closed	4 Closed for Donations <b>Independence Day</b>	5 Israel	6	7 KCD Donations 9-12	8 Sale & Donations: KCW 9-1	9 Sale & Donations: KCD 9-12 KCW 9-1
10	11 Leadership KCD Donations 9am-Noon	12 Board Meeting 7pm	13	14 KCD Donations 9-12	15 Sale & Donations: KCW 9-1	16 Sale & Donations: KCD 9-12 KCW 9-1
17	18 Centennial Planning KCD Donations 9am-Noon	19	20	21 KCD Donations 9-12	22 Sale & Donations: KCW 9-1	23 Sale & Donations: KCD 9-12 KCW 9-1
24	25 Club Business KCD Donations 9am-Noon	26	27	28 KCD Donations 9-12	29 Sale & Donations: KCW 9-1	30 Sale & Donations: KCD 9-12 KCW 9-1
31						



☞•••The fact that you are taking time to read this indicates a high aptitude for being a newsletter editor ☞ Email: John Kiddle at jkiddle@gmail.com immediately to volunteer •••☞

## This Week's Numbers

**Attendance:**

77

**Fines:**

\$24.57

**Happy \$:**

\$22.94

**Mott Pot:**

\$0

**Vouchers:**

\$1,410

(7 Families)

\$38,590 YTD

**Thrift Sale:**

**KCD:**

\$5,343

**KCW:**

\$4,454

**Other:**

\$261

**TOTAL:**

\$10,058





### Future Kiwanian Makes Appearance?

*Ad Hoc Correspondent, Dan Dever, reports...*

**Gary Donner** brought his daughter to lunch, with grandchild in stroller. Mom was trying to eat, but the grandchild was fidgeting too much for her to get nary a bite. **Peter Schork** quietly took the babe in arms, and entertained him until Mom had eaten. So the child was ultimately returned, only to cry out at being taken from Peter's arms, and remained fussy and active for the rest of the meeting. This, however, was a delightful addition to the meeting. Peter, it appears, has a talent for young children, perhaps coming from a large Catholic family.

Our Sponsored Programs  
in Service to Youth:



*"Serving the Children of the World...our motto, our mission"*

## KIWANIS CLUB OF ANN ARBOR

### Meetings:

Mondays at Noon  
200 S. First Street  
Ann Arbor, MI 48104  
[www.a2kiwanis.org](http://www.a2kiwanis.org)

Building Phone:  
734-665-2211



### Sale and Donation Hours

**Thrift Sale Downtown**  
200 S. First at Washington  
Saturdays 9am-Noon

#### ◆ Thrift Sale West

100 N. Staebler at Jackson  
Fridays and Saturdays  
9am-1pm

### Saleable Donation Drop Off:

Downtown: Mondays, Thurs-  
days, and Saturdays  
9-11:30am

West: Fridays and Saturdays  
10am-12:30pm

Call for Donation Pickup:  
734-665-0450

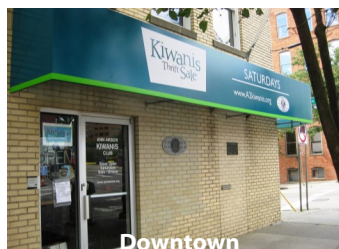


### Other Links:

- [Michigan District Kiwanis](#)  
Click [here](#) to read the latest *Michigan Builder*.
- [Kiwaniis International](#)
- [U of M Circle K](#)  
Meets 7pm Thursdays at UM Union or League (Check Calendar on Website)
- [Kiwaniis Club of Ypsilanti](#)  
Meets Noon Wednesdays at EMU Student Center
- Ann Arbor Western  
Meets Noon Tuesdays at Quarter Bistro
- Kiwanis of Ann Arbor - Morning Edition  
Meets 8:30am 2nd & 4th Wednesdays at Guy Hollerin's

## "Serving the Children of the World"

Interested in becoming a member? Please send an e-mail to [MembershipGrowth@a2kiwanis.org](mailto:MembershipGrowth@a2kiwanis.org) or visit the website [www.a2kiwanis.org](http://www.a2kiwanis.org).



Downtown



West



## Thanks to Our Advertising Supporters...

**RE/MAX Platinum Realtors, Doug Zieseemer**  
734-769-8111

**Betty Jean Harper, Visiting Vet**  
Your Home is My Office 734-475-9474

**Raymond James & Associates,**  
Andrea Kotch Duda, CFP, 734-930-0555

**Clarity Financial Advisors, Mark S. Wishka, ChFC, CFP, CLU, CRPC,**  
CASL, REBC, RHU—734-995-3996, [markwishka.com](http://markwishka.com)

**Charles Reinhart Realtors, Nathaniel Foerg, 734-834-1981**  
[nfoerg@reinhartrealtors.com](mailto:nfoerg@reinhartrealtors.com)

**Jim Carey, Charles Reinhart Realtors, 734-717-5591**  
[jicarey@reinhartrealtors.com](mailto:jicarey@reinhartrealtors.com)