



For more information, please contact:

Rebecca Scott | Schifino Lee
813-258-5858 ext 209
Amanda@schifinolee.cm

Schifino Lee Hires Senior Art Director and Art Director

Tampa, FL (September 15, 2015) – With an ever-growing roster of clients, Schifino Lee Advertising + Branding proudly announces the hiring of Chad Grandey, Senior Art Director and Mary Rach, Art Director.

Chad Grandey – Senior Art Director:

Chad comes to Schifino Lee with twenty years of valuable big league experience gained at top creative shops in Texas and Florida. He brings creative flair to all forms of advertising, from in-house collateral, to billboards, print ads, digital and television. His client history is filled with Fortune 500 and nationally known companies such as Best Buy, Delta Airlines, Samsung, and National Geographic.

Chad's work has won a slew of awards, including National Addys, the Healthcare Ad Awards *Best in Show*, Flagler Awards *Best in Show*, and Greater Ft. Lauderdale *Best in Show*, as well as being featured in Adweek, Creativity, Graphis, and Archive magazines.

He received his graphic design degree from Pittsburgh Technical Institute.

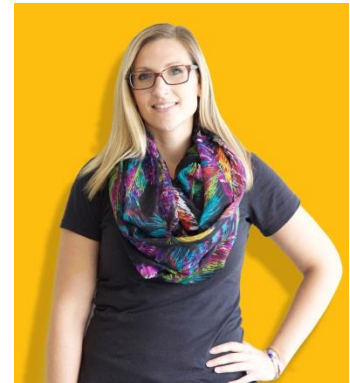


Mary Rach – Art Director:

Mary brings seven years of creative success as a Production Designer, Graphic Artist, and Art Director to her role at Schifino Lee. She's worked on a wide range of respected clients in Florida and Michigan, including Tampa's Lowry Park Zoo, FirstWatch, Experience Kissimmee, and Moffitt Cancer Center.

Her work has been honored with three Gold and four Silver Addys in regional competition, along with multiple trophies in district level competition.

Mary earned her associate degree in Fine Arts from Kirtland Community College and a Bachelor of Arts in Graphic Design from Kendall College of Art and Design.



About Schifino Lee:

Schifino Lee is a national advertising and branding agency with a proven track record for building brands through integrated communications in digital, traditional, experiential and social media. Schifino Lee clients include Westshore Pizza, WellCare Health Plans, Tampa's Lowry Park Zoo, Gerdau, M.E. Wilson, Vigo Importing/Alessi, and MHI Global. Information is available at www.schifinolee.com.

###