



radiolink plus – ATEX



This new version of the bestselling Radiolink plus is ATEX and IECEx approved to Ex ia II T4 Ga for use in zones 0, 1 and 2 hazardous environments (gas).

Capable of both static weighing and dynamic load monitoring the RLP-ATEX is designed for the on and offshore oil and gas, chemical and other industries that work in challenging hazardous areas.

Available from stock in capacities from 1t to 300t, constructed from high-quality aircraft grade aluminum and featuring an advanced internal design structure.

This internal design structure not only provides the product with an unrivaled strength to weight ratio, it also allows the use of a separate internal sealed enclosure providing the load cell's electronic components with IP67/NEMA6 environmental protection, even with the battery cover plate missing, making this industry leading dynamometer even more suitable for use in the harshest environments.

Featuring industry leading wireless technology and range, the versatile Radiolink plus is supplied with an update rate of 3Hz and can be easily configured to run at industry leading speeds of up to 200Hz. Data is transmitted wirelessly utilizing the latest in IEEE 802.15.4 (2.4 GHz) technology providing safe, high-integrity, error-free transmission of both static weight and dynamic load to an ATEX/IECEx approved wireless handheld controller, the SW-HHP-ATEX.

The Radiolink plus-ATEX utilises easily sourced Energizer® Ultimate Lithium AA Batteries and features advanced circuitry designed to protect the load cell from damage if the batteries are incorrectly installed. This advanced circuitry extends battery life, and the use of easily sourced batteries eliminates issues associated with rechargeable battery pack charging, failure and replacement.

It is easy to see why, globally, the Radiolink plus-ATEX is the number one choice for weighing and dynamic load monitoring in hazardous applications.

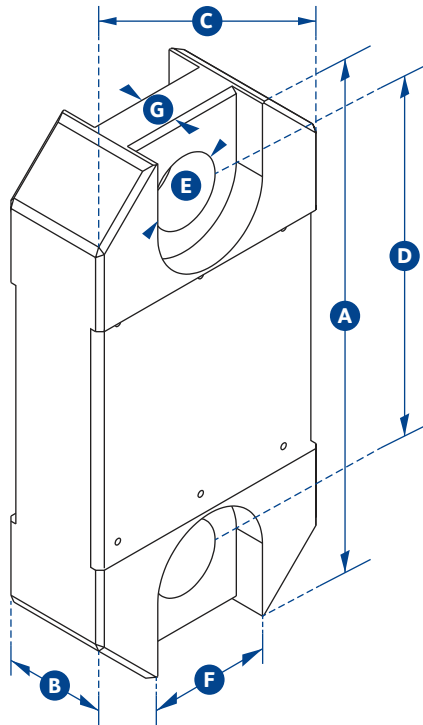
Certification Numbers: **RLP ATEX** - IECEx SIR 15.0071X, Sira 15ATEX2195X
SW-HHP ATEX - IECEx SIR 15.0072X, Sira 15ATEX2196X

Features and benefits:

- Approved for use in hazardous zones 2, 1 and 0
- Proprietary 2.4 GHz Wireless
- Industry Leading 2,300 foot Wireless Range
- Error Free Data Transmission
- Unrivaled Resolution
- Environmentally Sealed
- Unmatched Battery Life
- Internal Antennae
- Compact Size
- Remote On-Off
- Lightweight
- Peak Hold
- Design validated by F.E.A.
- Product independently approved by SIRA

imperial specifications

radiolink plus – ATEX



Part Number	RLP1TU	RLP2T5U	RLP5TU	RLP12TU	RLP25TU	RLP35TU	RLP50TU	RLP75TU	RLP100TU	RLP150TU	RLP200TU	RLP250TU	RLP300TU
Capacity	2200lb	5500lb	11000lb	26000lb	55000lb	77000lb	110000lb	165000lb	220000lb	330000lb	440000lb	550000lb	660000lb
Resolution	1lb	2lb	2lb	5lb	10lb	10lb	20lb	20lb	100lb	100lb	200lb	200lb	200lb
Units	lb	lb	lb	lb	lb	lb	lb	lb	lb	lb	lb	lb	lb
Weight	3.1lb	3.1lb	4.4lb	7.1lb	11lb	19lb	25.3lb	35.3lb	75lb	101.4lb	158.7lb	158.7lb	260lb
Safety Factor	12:1	5:1	5:1	5:1	5:1	5:1	5:1	5:1	5:1	4:1	4:1	4:1	5:1
Battery Type	Handheld-2 x AA / Load Cell 4 x AA												
Battery Life	Handheld 400hrs / Load cell 1200hrs continuous												
Display Type	6 digit 1" LCD												
Operating Temp	-10°C to +50°C / 14°F to 122°F												
Accuracy	± 0.3 % of applied load												
Frequency	2.4GHz												
System Range	700 meters / 2300 feet												
Data Rate	3Hz - up to 200Hz can be ordered for dynamic load monitoring applications												
Protection	IP67 / NEMA 6												
Dimension A	8.03	8.03	9.80	12.01	13.39	15.47	16.69	18.5	23.94	26.38	27.56	27.56	31.73
Dimension B	1.69	1.69	1.69	1.85	2.36	2.95	2.95	2.95	3.90	3.90	5.67	5.67	5.91
Dimension C	3.98	3.98	3.98	3.98	4.53	4.96	6.42	7.95	10.04	11.93	12.60	12.60	16.77
Dimension D	5.75	5.75	6.50	7.60	8.46	8.86	9.06	10.24	12.60	14.17	13.78	13.78	13.78
Dimension E	0.96	0.96	1.50	1.87	2.17	2.99	2.99	2.99	4.29	4.29	5.20	5.20	6.30
Dimension F	1.89	1.89	2.60	Not available on this capacity									
Dimension G	0.75	0.75	1.26										
Crosby Shackle	G2130						G2140						
Loading Pin Ø	3/4"	3/4"	1"	1 3/8"	2"	2 1/4"	2 1/4"	2 3/4"	3 1/4"	3 3/4"	4 3/4"	5"	6"