

## **Utilizing Industry Leading OMAX Technology**

The OMAX 55100 Jet Machining® Center



- Table size of 10' 6" x 5' 5" (3200 mm x 1650 mm)
- A cantilever Y-axis on a bridge X-axis, with a motorized Z-axis allows for material loading from three open sides
- A work envelope offering an X-Y cutting travel of 8' 4" x 4' 7" (2540 mm x 1397 mm)

The OMAX 5555 Jet Machining® Center



- Table size of 6'8" x 5'5" (2032 mm x 1650 mm)
- Rapid water level control for submerged cutting
- A work envelope offering an X-Y cutting travel of 4' 7" x 4' 7" (1397 mm x 1397 mm)

## **About Us**

Aqua Dynamics offers a comprehensive and unique subcontract WaterJet cutting and CAD design service. WaterJet cutting technology can cut a wide range of materials including Glass, Marble, Metals, Carbon Fibre Composites, Foam, Rubber and Plastics. In fact virtually any material can be cut using the Abrasive WaterJet process.

Our Clients range from Aerospace to Architectural, Formula 1 to Fast Pleasure Boats, Steel Fabricators to Stonemasons throughout the UK and Ireland.

Based in Hertfordshire within easy reach of the London area we are specialists in WaterJet cutting and precision WaterJet profiling.

## **Contact Us**

Phone: 01727 844077

Email: [info@aqua-dynamics.co.uk](mailto:info@aqua-dynamics.co.uk)

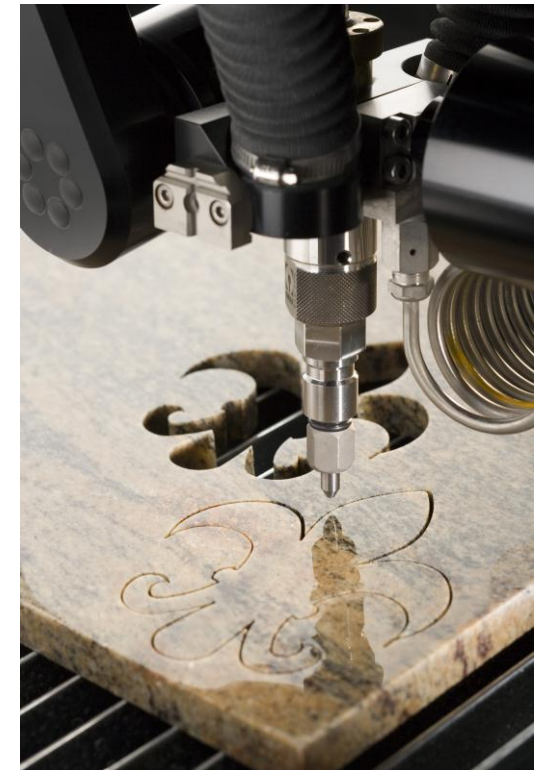
Web: [www.aqua-dynamics.co.uk](http://www.aqua-dynamics.co.uk)



### **Aqua Dynamics Ltd**

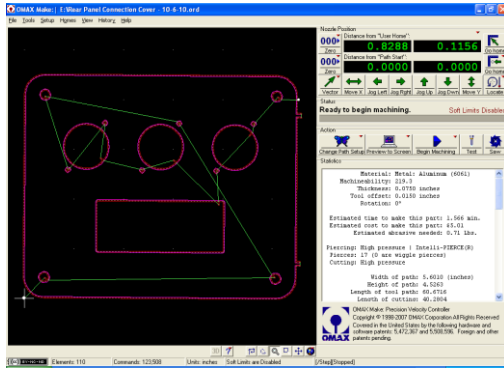
Unit B2,  
156 St Albans Rd Industrial  
Estate, Sandridge, St Albans,  
Hertfordshire.

AL4 9LP



# **Aqua Dynamics Ltd**

*A Sub-Contract WaterJet  
Cutting Service*



## CAD Design Service

At Aqua Dynamics Ltd we can take care of all your CAD/CAM requirements from design to manufacture to convert your ideas into reality. If you can provide a dimensional sketch or drawing, we will do the rest. However, if you already have a CAD system and can output a DXF file, then we'll cut directly from that. Other drawing files can be converted so a PDF, DWG, IGS or even Catia for 2D files are also acceptable, if you have any doubt get in-touch to be sure we are speaking the same language.

## Material Supply Service

Customers will frequently want to supply their own materials for financial as well as quality control purposes, however if required to do so Aqua Dynamics Ltd will supply as well as process the material for you. Common material specifications can often be sourced locally and save additional transportation costs. For heavy materials we have lifting facilities of up to 4tons.

## Specialist Applications for Natural Stone

### • Decorative Floor Work

Geometric patterns in Marble and other materials require a high degree of design and cutting accuracy if they are to be assembled successfully. Very often these are intended to have no grout lines so the parts must be prepared with a reverse taper to accommodate the adhesive film and present a perfect match at the surface. Dissimilar stone of varying thickness can also be accommodated in this way and metal, wood or composites can be used to enhance the effect.

### • Domestic Inlay

House names and numbers cut in polished Stainless Steel inlaid into Granite add a touch of class, again any combination of materials can be employed to give the desired effect. At ground level outdoor lighting features can be cut into blocks and pavers to create a light boundary for pathways, steps and driveways.



### • Commercial Inlay

Company Logos often in the threshold slab or entrance lobby can be created to satisfy the most demanding customers' requirements, here the element of detail is usually higher with a lot of emphasis on design as well as a diverse choice of materials.

### • Chamfer Cutting

The WaterJet process is also entirely suitable for edge chamfering, typically at 45 degrees to accommodate an external corner without resorting to unsightly edging strips. It is frequently employed in tiling and stonework to create a matching surface that can be rounded and polished after bonding to give a completely seamless appearance. In the same way louver vents can be cut into windowsills at 45 degrees to direct a flow of warm air over the glass to clear condensation, down lighting for steps and many other applications.

### • Swimming Pool Drainers

Designers are frequently turning to the WaterJet process to overcome the need to use unsightly plastic drainer panels that don't match the surrounding floor area for overflow pools. This can be overcome with the use of the identical stone or porcelain tiles bonded to a reinforcing Stainless Steel backing and WaterJet cut as one piece. Aqua Dynamics Ltd has considerable experience in the manufacture of both reinforced and conventional style drainer panels.

