

## Symptoms of osteoarthritis in the knee:

- Knee pain associated with:
  - Standing or walking short distances
  - Climbing up or down stairs
  - Sitting in or standing up out of chairs
- Initial pain and/or stiffness with activities initiated from a sitting position
- Stiffness in the knee after getting out of bed
- A crunching sensation when the knee is used



Conformis, Inc., 11 North Avenue, Burlington, MA 01803, USA  
Phone: 781.345.9001 • Fax: 781.345.0147

For more information visit  
[www.conformis.com](http://www.conformis.com)

**Caution:** The iUni G2 Knee Replacement System (KRS) is intended for use in one compartment of the osteoarthritic knee to replace the damaged area of the articular surface in patients with evidence of adequate healthy bone sufficient for support of the implanted components. The iDuo G2 Knee Repair System (KRS) is intended for use in patients with severe knee joint pain and disability whose conditions cannot be solely addressed by the use of a prosthetic device that treats only a single knee compartment. Both implants are intended for cemented use only. Only a licensed physician can help you determine the appropriate medical treatment. There are potential risks to knee replacement surgery, and individual results may vary. Before making any decisions concerning medical treatment, consult your physician regarding your options and the risks of those options. The longevity, performance and feel of any knee implant will depend on various factors, including your physical condition, your activity level, adherence to your physician's instructions, and other factors.

USA Federal law restricts this device to sale by or on the order of a physician.

©2012, Conformis, Inc. All rights reserved. iUni®, iDuo® and Conformis® are all registered trademarks of Conformis Inc. | MK-02529-AC 6/12

**CE** 0086 Authorized Representative: Medical Device Safety Service, GMBH  
Schiffgraben 41, 30175 Hannover, Germany  
Phone: +49 (511) 6262.8630 | Fax: +49 (511) 6262.8633



# It's your knee

## Help keep it that way

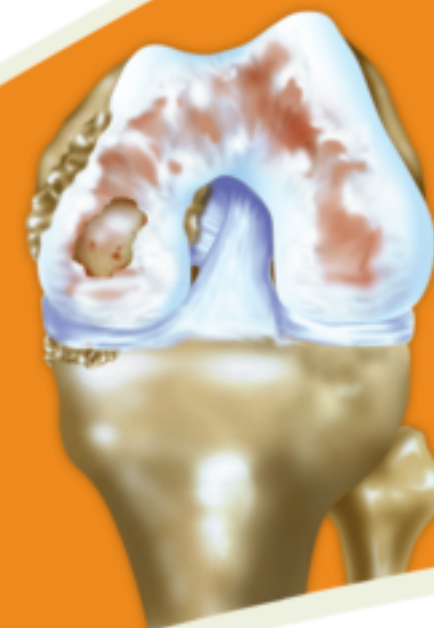
PERSONALIZED PARTIAL KNEE IMPLANTS



## Osteoarthritis the disease

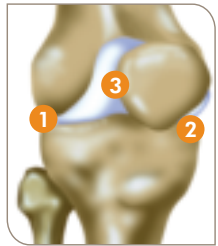
Osteoarthritis is the most common form of arthritis, affecting tens of millions of people worldwide. It is a degenerative joint disease characterized by the breakdown and eventual loss of joint cartilage. The breakdown and wearing away of cartilage causes the bones to rub together resulting in extreme pain.

How osteoarthritis affects the knee



# Understanding your knee. Understanding your options.

Your knee consists of three “compartments” or sections:



- 1 Lateral compartment (outer half of your knee)
- 2 Medial compartment (inner half of your knee)
- 3 Patellofemoral compartment (behind the knee cap)

Osteoarthritis can affect one, two or all three compartments.

## Total Knee Replacement



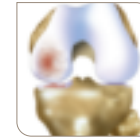
In traditional total knee replacement, the full knee is replaced with a metal implant, which requires significant bone removal. This can limit your future treatment options.



- **Tricompartmental** procedures treat osteoarthritis in all three compartments of the knee.

## Partial Knee Replacement

Partial knee implants target only those compartments actually affected by the disease.



- **Unicompartmental** procedures treat osteoarthritis in the medial or lateral compartment of the knee.



- **Bicompartmental** procedures treat osteoarthritis in the medial and patellofemoral or lateral and patellofemoral compartments.



## Personalization process

### STEP 1: Scheduling a CT scan

Developing your personalized implant begins with images of your knee. Your doctor will give you a prescription to have a diagnostic scan at a nearby imaging center.

### STEP 2: Getting your knee scanned

The imaging center will take a CT scan of your leg and send a diagnostic report to your surgeon for evaluation.

### STEP 3: Recreating your knee

Using your CT scan a 3-D virtual model of your knee is developed and will be used to individualize your implant.

### STEP 4: Personalizing your implant

Using a proprietary process, your implants are designed and manufactured for delivery in 5 weeks.

### STEP 5: Preparing for surgery

Your implant will be delivered to your surgeon for the day of surgery. Speak to your doctor about scheduling your surgery and what to expect.

### STEP 6: Getting back on your feet

While every person’s experience is different, many are able to weight-bear and walk with an aid within hours following surgery. Most people return to activities of daily living within 6 weeks. More physical activities such as sports may take up to 3 months. Consult your doctor or physical therapist about your individual goals and limitations.



## A ConforMIS personalized implant offers unique advantages versus a traditional knee replacement.



*iUni*<sup>®</sup> unicompartmental knee implant



*iDuo*<sup>®</sup> bicompartmental knee implant

- **Provides a customized fit specific to your knee**
  - Customized implants mirror the surface contours of your knee to help provide greater coverage and implant fit.
- **Preserves your future surgical options**
  - With less bone cuts, more of your knee is preserved for future more aggressive solutions if necessary.
- **Designed to mimic the natural shape of your knee**
  - By preserving healthy cartilage, bone and ligaments, your knee is able to retain more of its natural function.
- **Allows for a less traumatic procedure**
  - Customized instrumentation is built to match your knee, reduce the amount of bone preparation and simplify your procedure.

## Personal advantage

ConforMIS implants have a unique advantage: they’re personalized. The ConforMIS approach gives you notably more bone preservation than traditional variations so you’re able to preserve your knee for possible future treatment options. You may also experience faster recovery time and reduced post-operative pain.