



San Jose Evergreen Community College District

Presentation to Bay Area Community College Consortium

January 27, 2016

**Vice Chancellor Carol Coen
Kishan Vujjeni, Dean
College Transition
& Extension Programs
Usha Narayan, Principal
Milpitas Adult Education**

South Bay Consortium for Adult Education



1. Who are we?
2. What is our structure?
 - Guiding Principle
 - Governance
 - Faculty/Teacher Engagement
 - Community Voice
3. What is our Plan?
4. Why does it matter?



South Bay Consortium for Adult Education

- SBCAE **members** include
 - **5 Adult Schools**
 - Campbell Adult and Community Education
 - East Side Adult Education
 - Milpitas Adult Education
 - Santa Clara Adult Education
 - Silicon Valley Adult Education
 - **4 Community Colleges (2 Districts)**
 - San Jose City College
 - Evergreen Valley College
 - Mission College
 - West Valley College
- SBCAE **partners** include 20 community partners
 - Community Based Organizations
 - Workforce Investment Boards
 - Libraries
 - Labor Organizations
 - Social Services



Bridging Two Systems



Community
College
System



Adult School
System

SBCAE Governance

- Guiding principles
 - Needs of adult education student first
 - Transparency and inclusion
 - Collaboration and partnerships
 - Expansion and Innovation
 - Community partnerships and connections
 - Anticipate the future needs of adult learners

SBCAE Governance

- Decision-Making
 - Consensus Driven Decisions
 - Systems Vote



SBCAE Governance

- Faculty/Teacher Engagement
 - Workgroups
 - Academic Senates/Unions



*College and adult school faculty
working together for our students*

SBCAE Governance

- Community Voice
 - Formal meetings - Public Notice
 - Community meetings
 - Website



Community Forum, March 5, 2015

The Regional Plan



- AB 86 Create the Plan
- AB 104 Implement the Plan

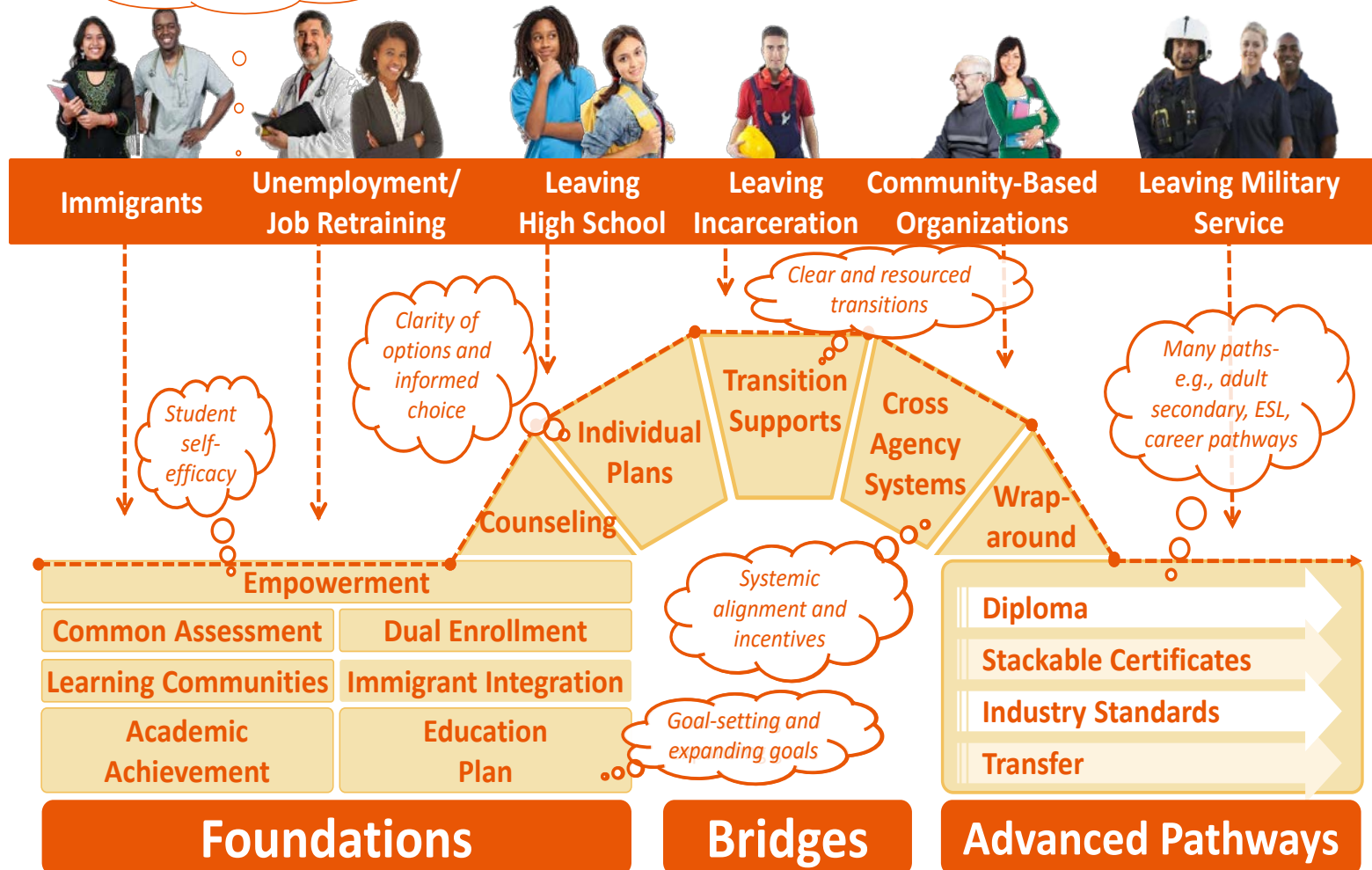


AB104 Adult Education Block Grant
Three-Year Consortia Plan Update from AB86 Final Plan

Emerging Model – Universal pathways linking Adult Education and Community Colleges

Principles

“No Wrong Door” - Multiple points of entry to the path to a better career



New Delivery System

- Responsive to **student needs**
- **Multiple pathways** across systems
- Use of **common assessments** and **curriculum alignment**
- Share **best practices**
- Provide **wrap-around support services**
- Collaborate to **leverage regional resources**

“Tiers” of priority

**for the
proposed
funded
solutions**

Scaling up
what works

Highly prioritized
programs to be piloted
and scaled

Maintain consortium’s
collaborative planning process

Establish transitional programs
utilizing innovative strategies

Maintenance of current capacity

2015-2016 Annual Plan

*Can't do it all...
not enough
funding!*

Maintaining Consortium's
Collaborative Planning Process

Establish Transition Programs
Utilizing Innovative Strategies

Maintenance of Current Capacity

Role of Workforce Institute

- Workforce Institute (WI) is the Non-Credit Division of SJECCD
- WI represents the interest of SJECCD in AB86 and manages the AB104 Adult Education Block Grant
 - Dedicated, focused oversight
 - Adheres to all college processes



Non-Credit Adult Education Program Model

- ❖ Targeted CTE programs for 2015-16 (focus of AB104 is transition into college **and** workforce preparation)
- ❖ Non-Credit Career Development College Preparation (CDCP)
 - Analyzed Regional workforce needs
 - Gap Analysis (adult schools to college CTE)
 - Colleges identified initial CTE tracks
 - Created CDCP Pipeline Bridge matrix
 - Consortium endorsed Model
 - Began Bridge CDCP curriculum development



Approved Non-Credit CDCP Programs at EVC

Evergreen Valley College – cohorts of 35 Students

From Adult School, High School or Re-Entry adults	Non-Credit Program and Courses	Estimated Hours	Wrap-Around Student Supports	Pathway to EVC CTE Programs (Cert or AA)	Local Occupation & Wage
<i>Adult school completer, GED, HSD or ESL; High School Graduate, or Re-entry adults</i>	Engineering Preparation - 297 hours		Variable hours	Building Information Modeling (BIM) Cert	Entry Level Engineering Careers
	ENG 500: Introduction to Engineering	27	Computer Literacy	Architectural CADD Cert	Average Annual Wage
	ENG 502: Basic Math Applications in Engineering	90	Math Lab	CADD Mechanical Modeling	\$50,000 - \$ 75,000
	ENG 504: Technical and Contextualized Communication	90	ELL Lab	Engineering AA or AS	
	ENG 506: Basic Principals of Engineering	90			
<i>Adult school completer, GED, HSD or ESL; High School Graduate, or Re-entry adults</i>	Surveying & Geomatics Preparation - 297 hours		Variable hours	Surveying and Geomatics Certificate	Entry Level Surveying / Geomatics
	SG 500: Introduction to Surveying & Geomatics	27	Computer Literacy	Surveying & Geomatics AA, AS	Average Annual Wage
	SG 502: Basic Math Application in Surveying & Geomatics	90	Math Lab		\$35,000 - \$ 50,000
	SG 504: Technical and Contextualized Communication	90	ELL Lab		
	SG 506: Explore Survey & Geomatics Careers	90			

- Automotive Tech Preparation – planned 192 course hours (in development)

Approved Non-Credit CDCP Programs at SJCC

San Jose City College — cohorts of 35 Students

From Adult School, High School or Re-Entry adults	Non-Credit Program and Courses	Estimated Hours	Wrap-Around Student Supports	Pathway to SJCC/EVC CTE Programs (Cert or AA)	Local Occupation & Wage
<i>Adult school completer, GED, HSD or ESL; High School Graduate, or Re-entry adults</i>	Medical Career Preparation - 314 hours		Variable hours	Medical Assisting Program	Entry Level wages In Medical Careers
	MA500A Fundamentals of Medical Terminology I	18	ELL Lab	EMS Program	Average Annual Wage
	MA500B Fundamentals of Medical Terminology II	36		Dental Assisting Program	\$35,000 - \$ 50,000
	MA501 Introduction to Healthcare Professions	60	Computer Literacy	Certified Nursing Assistant	
	Math Basics for Medical Careers	75	Math Lab	EVC Nursing Program	
	Technical/Contextualized English	75			
	First Aid	50			

- IT Career Preparation – planned 300 course hours (in development)
- Advanced Manufacturing Preparation – planned 300 course hours (in development)

SBCAE Regional Plan is

Transformational to the Adult Learner

- Increased access (No Wrong Door)
- Enhanced student agency via Individual Plans
- Clarity of options and informed choices
- Multiple pathways leading to employability and/or college
- Clearly identified transition specialists
 - Regional Resources
 - More supportive services

**Why it
Matters!!**

Non-Credit Bridge Program

enhances STUDENT SUCCESS

**Why it
Matters!!**

- Focus on skill attainment, not grades or units – no failure
- Progression through contextualized basic skills courses
- Better persistence rates
- No repeatability limits
- Students develop requisite skills to be successful in credit courses
- Enhances college completion rates
- Bridge to educational / career pathways
- Flexible scheduling
- Financial aid reserved for college level programs

- Affordable (no tuition)

.....enhances STUDENT SUCCESS

- Get students on college campus, in a adult-learner friendly manner
- Enrollment strategy for colleges under cap:
 - Effective recruitment – students better prepared for success
 - CDCP students are college enrolled – transition is complete
 - CDCP is a gateway into credit certificate/degree programs
- Effecting regional economic vitality by positively impacting unemployment/underemployment

**Why it
Matters!!**

SBCAE website launched in October 2015

<http://sbcae.org/>



South Bay Consortium for Adult Education

Serving over 30,000 adult education students in Santa Clara County

Home	Formal Meetings	Regional Plan	Annual Plan	AB86 & AB104	Community Partners	SBCAE Charter
English as a Second Language	Career Technical Education	Adult Basic & Secondary Education	Adults with Disabilities	Apprenticeships	Members	Contact Us



College and adult school faculty working together for our students

Welcome

The South Bay Consortium for Adult Education is a collaboration of four colleges and five adult schools in Santa Clara County, California. We are working together to build pathways for adult learners so they can achieve economic self-sufficiency in an area with one of the highest costs of living in the nation. Our consortium is committed to having a positive collective impact on the local workforce, building a just economy and healthy community. Attend our next Public Meeting on January 29, 2016.

Calendar

Friday, January 29, 3:00-5:00pm

Formal SBCAE Meeting

Santa Clara Adult Education

Friday, February 26, 1:00-4:00pm

Faculty Workgroups

Overfelt Adult Ed Center, 1901 Cunningham
San Jose, CA 95122



South Bay Consortium for Adult Education

- Thank you
- Questions??