



# Bright Futures Joplin Financial Review

as of June 30, 2015

# Bright Futures Joplin Financial Review



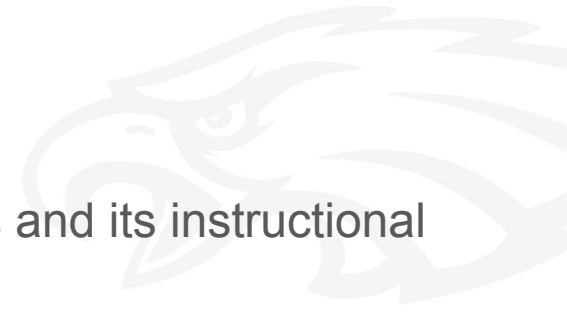
**Purpose:** to update the board and community regarding the current financials and management of Joplin Schools' Bright Futures Joplin program.

## Questions from our Community



- How does the district manage Bright Futures Joplin funds?
- What are the sources of revenue for Bright Futures Joplin?
- How is Bright Futures Joplin governed?

# Bright Futures Joplin Background



- District-wide activity to support Joplin Schools' students and its instructional programs.
- Two sources of revenue: donations and fundraisers. There are NO local taxes or general revenues credited to the Bright Futures Joplin activity fund or the funds managed by Bright Futures Joplin. Bright Futures Joplin tracks and honors donors' designations.
- Governed by Joplin Schools like all other Joplin Schools' operations and supplemented by the Bright Futures Joplin Advisory Board made up of representatives from local community and business organizations. Since its inception in Fiscal Year 2011 to the present, it has been subject to all Joplin Schools' policies and procedures including personnel, financial, purchasing, etc. and audits.

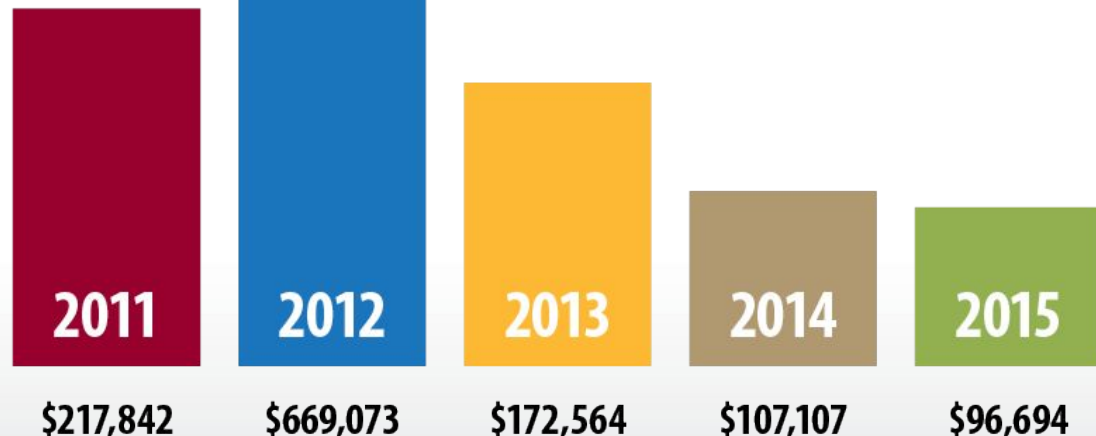
# Bright Futures Joplin Total Revenue - Donations & Fundraisers



**TOTAL**  
7/01/2010 - 6/30/2015:  
**\$1,263,280\***

DISCLOSURE: BF-J Activity Fund includes donations made to Joplin Schools to benefit students and classroom supports.

\*Total does not include Eagle Angel Activity Fund and designated tornado relief donations to Adopt-a-Classroom, Adopt-an-Eagle, and the Cardinal Care grant.



# Bright Futures Joplin Operations



- Bright Futures Joplin coordinator reports directly to the Superintendent. BF Joplin staff members coordinate with building principals, school counselors, and administration to meet student needs.
- For all activity funds, including Bright Futures Joplin, the annual budget is the actual balance of the activity fund. However, Bright Futures Joplin, with guidance from its advisory board, develops an annual operating budget for the program within the constraints of the activity fund balance. The balance in the Bright Futures Joplin activity fund as of 6/30/15 was \$446,365.
- The balance in a separate activity fund, Eagle Angel, as of 6/30/15 was \$452.07.

## Accounts used by Bright Futures Joplin to support students and classrooms:

1. Bright Futures Activity Fund - undesignated funds to support student assistance and general BFJ programs and activities and designated funds for specific BFJ programs and activities.
2. Adopt-a-Classroom tornado donation account - designated for classroom needs.
3. Adopt-an-Eagle tornado donation account - designated for school supplies.
4. Eagle Angel Fund - designated for immediate student needs.
5. Cardinal Care Grant - grant funds given by the St. Louis Cardinals designated to fund donation center employee salary.

## Additional resources managed by BFJ to support students and classrooms:

1. In-kind donations
2. Volunteers

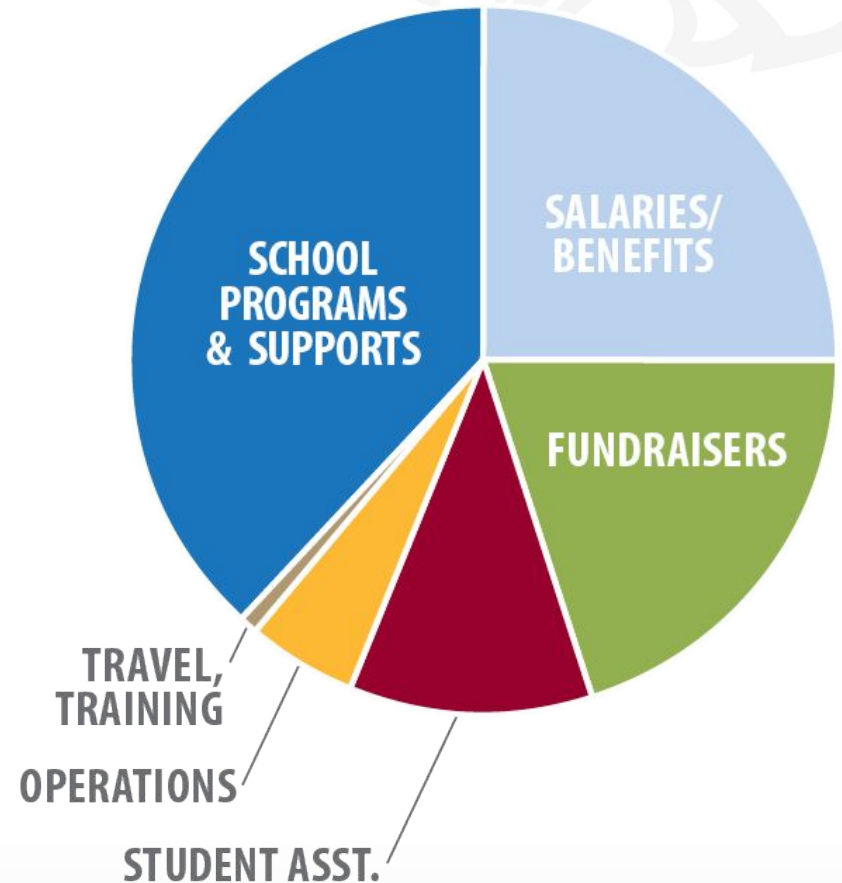
# Bright Futures Joplin 2014/15 Expenses

## 1. BF Joplin activity account

School Programs & Supports	\$71,191	38%
Salaries/Benefits*	\$48,633	25%
Fundraisers	\$38,027	20%
Direct Student Assistance**	\$20,867	11%
Operational Expenses	\$8,890	5%
Travel, Training, Meetings	\$1,674	1%
<b>TOTAL:</b>	<b>\$189,282</b>	

\*Does not include salaries and benefits in the amount of \$26,528 paid out of the Cardinal Care Grant.

\*\*Does not include student needs met out of Eagle Angel, Adopt-an-Eagle, or Adopt-a-Classroom in the amount of \$60,560.

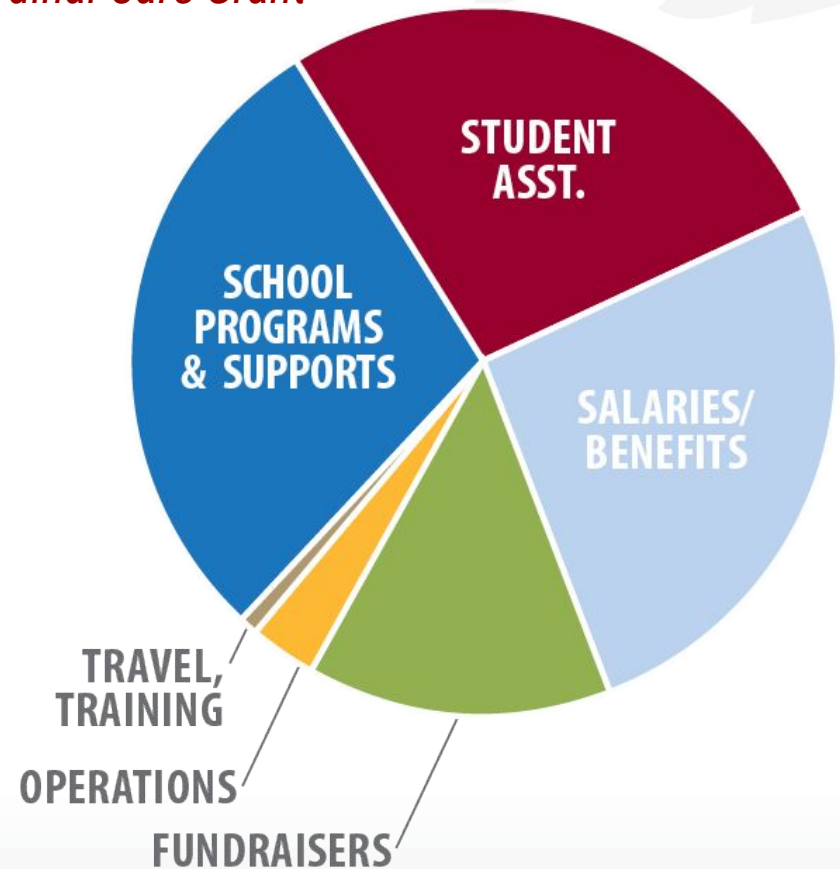




# Bright Futures Joplin 2014/15 Expenses

*Includes all accounts managed by BFJ: 1. BFJ Activity Fund, 2. Adopt-a-Classroom, 3. Adopt-an-Eagle, 4. Eagle Angel Fund, and 5. Cardinal Care Grant*

Direct Student Assistance	\$81,111	29%
Salaries/Benefits*	\$75,160	27%
School Programs & Supports	\$71,508	26%
Fundraisers	\$38,027	14%
Operational Expenses	\$8,890	3%
Travel, Training, Meetings	\$1,674	1%
<b>TOTAL:</b>	<b>\$276,370</b>	



\*Includes \$26,528 paid out of the Cardinal Care Grant.  
As of 06/30/2015, this account balance is \$0.

# Bright Futures Joplin 2014/15 Non-Profit Spending Report

*Includes all accounts managed by BFJ: 1. BFJ Activity Fund, 2. Adopt-a-Classroom, 3. Adopt-an-Eagle, 4. Eagle Angel Fund, and 5. Cardinal Care Grant*

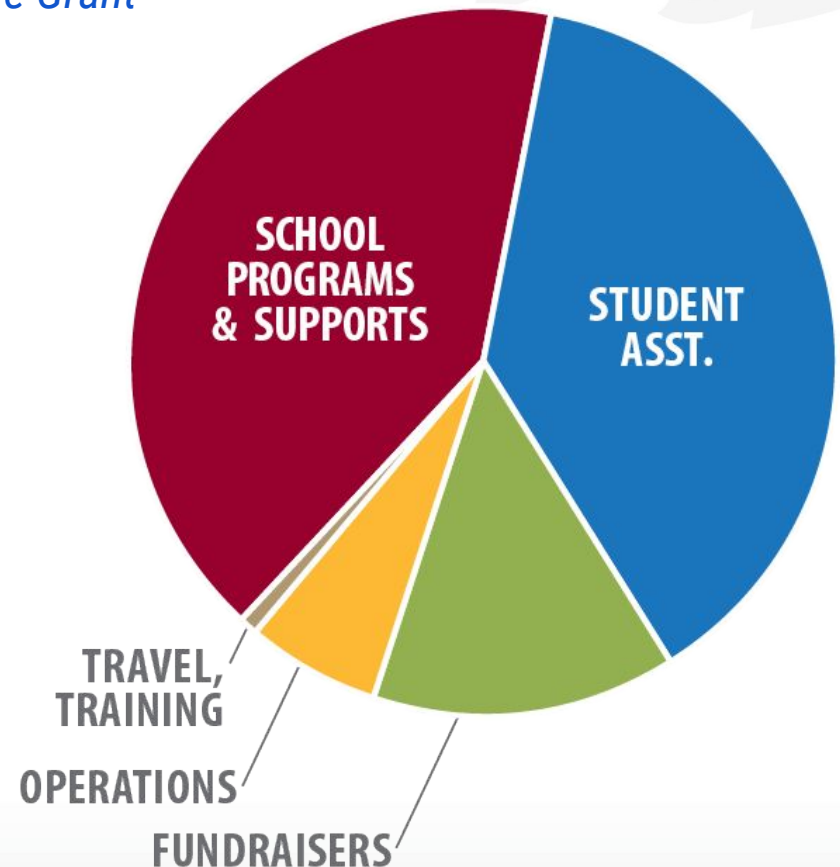
Direct Student Assistance*	\$113,811	<b>41%</b>
School Programs & Supports*	\$104,208	<b>38%</b>
Fundraisers	\$38,027	<b>14%</b>
Operational Expenses*	\$18,650	<b>6%</b>
Travel, Training, Meetings	\$1,674	<b>1%</b>
<b>TOTAL:</b>	<b>\$276,370</b>	

\*Salaries totaling \$75,160 are broken out by categories to reflect traditional non-profit reporting.

Operations - \$9,760

Direct Student Assistance - \$32,700

School Programs & Supports - \$32,700



# Bright Futures Joplin 2014/15 Value-Added Capacity

*In-kind donations & volunteer hours managed*

Valuation of Volunteer Hours  
Managed – 7,706:06 hours at the  
rate of \$23.23/hour

\$179,012 **57%**

Total Value of In-Kind  
Donations

\$75,085 **24%**

Total Value of Teacher Supply  
Give-A-Ways

\$36,281 **12%**

Total Value Student Need Met  
Through In-Kind Donations

\$21,450 **7%**

**TOTAL:**

**\$311,828\***



\*This total does not include the  
\$276,370 of cash spending.

# Bright Futures Joplin Fund Balance Breakdown



Fund Balance as of 6/30/15:  
**\$446,817**

Cardinal Care Grant: \$0

Eagle Angel: \$452

Adopt-an-Eagle: \$36,795

Adopt-a-Classroom: \$19,414

Net Activity Fund Balance: \$390,156

Net Activity Fund Balance: \$343,773

Adopt-a-Classroom: \$19,414

Adopt-an-Eagle: \$18,765

Eagle Angel: \$0

Cardinal Care Grant: \$0

Fund Balance as of 9/30/15:  
**\$381,952**

# Snackpack Program



- Developed in spring of 2011 to assist at-risk students with weekend food needs.
- To date, program has been a collaboration between funding resources (Joplin Schools Foundation and General Mills grant).
- Operational administration done by Bright Futures Joplin, Joplin Schools, and volunteers.
- The BFJ Advisory Board is working to fully administer, grow, and sustain the program to meet the needs of all food-insecure students in the district long-term.