



Joplin Early Childhood Center

in collaboration with Parents As Teachers, United Way-
Success by 6, and Economic Security-Head Start
presentation to City Council November 2, 2015

Partners in Funding



Partners in Service

- Joplin Schools plans for the **Parents as Teachers** Model Program to operate out of the proposed center.
- The Early Childhood Program will continue to work closely with Economic Security's **Head Start** program, MO **First Steps** Early Intervention, the **Cerebral Palsy Center of Tri-County**, and United Way's **Success by Six** program.
- Partnership with these entities can include, but is not limited to, providing space for classrooms and services, hosting community meetings and professional development, and providing parent resources.

Current Program Description

- Early Childhood Special Education:** Students suspected of a disability or developmental delay can be referred, evaluated, and found eligible for Early Childhood Special Education under Individuals with Disabilities Education Act of 2004 (IDEA 2004) guidelines as a child with a disability.
- Typical Peer Program:** The ESCE program allows the Joplin School District to include “typical peer” students otherwise not eligible for preschool programs to receive quality preschool education. This is a State approved model to provide support for young children with disabilities and developmental delays.
- Title I.A. Preschool:** Joplin Schools also serves “at-risk” students eligible for Title I services. Students that qualify for Title I services display deficits in social, language, motor, and self-help skills.
- Pilot Child care:** Per Board of Education approval, Joplin Schools is piloting a limited half-day child care program, offered to a small number staff children.

Community Need

- Upon enrollment, **68%** of kindergarten students are currently scoring below 45% in one or more areas of the DIAL-4 screening tool, with 16% scoring below 45% in all areas.
- During the 2014-2015 school year, 69.23% of Early Childhood students qualified for free- or reduced-price meals, **62%** qualified for free-price meals.
- 67.7% of current enrollees are from low income households and 49.2% are from very low and extra low income households.
- Currently, the Cerebral Palsy of Tri-County in Webb City, MO is the only child care facility able to readily provide an educational preschool setting for children with significant disabilities. The Bill and Virginia Leffen Center of Autism provides similar services to children on the autism spectrum only.
- Prior to the tornado, Joplin had 1,971 licensed child care slots available. Presently, there are a total of 1,718 licensed slots available. This accounts for a **16% decrease in child care** capacity or **253 fewer slots available**.

Current Pattern of Demand

Current Enrollment:

- ECSE: 90
- Typical Peers: 72
- Title I.A preschool: 30
- Pilot Child Care: 9

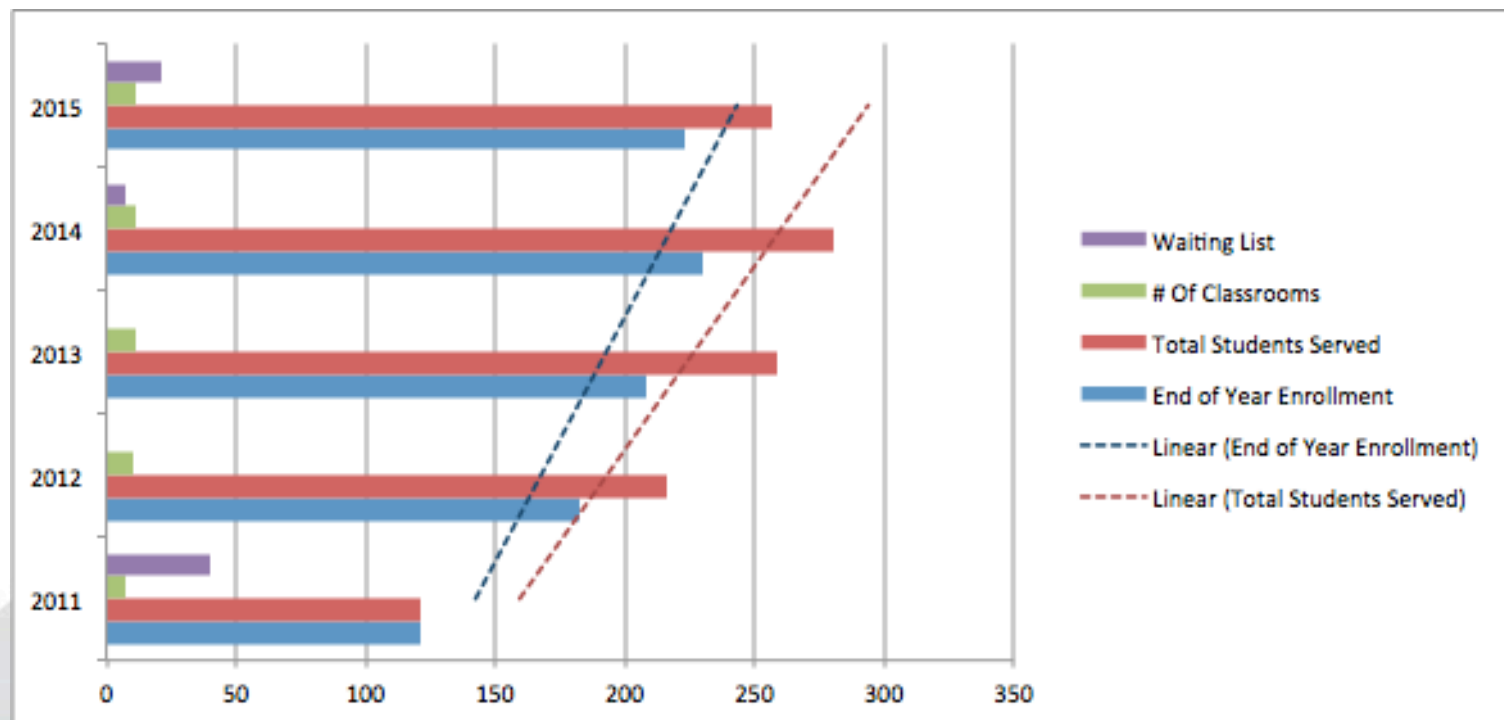
TOTAL: 201

Current Waiting List:

- ECSE: 0 (all students found eligible for ECSE, must be served)
- Typical Peers: 70
- Title I.A preschool: 65
- Pilot Child Care: 4

TOTAL Waiting List: 139

Historical Pattern of Demand



Child Care Disparities

	Joplin Pre-Tornado 5/20/11	Joplin Post-Tornado 8/14/15
Licensed Center-Based Care Facilities	25	21
Licensed Family Child Care Programs	11	5
Capacity: Licensed Center-Based Care Facilities	1,490	1,230
Capacity: Licensed Family Child Care Programs	94	48

Program Description & Proposal

- Joplin Schools will construct a new facility North of Irving Elementary to address the growing Early Childhood population.
- The proposed Joplin Early Childhood Center will continue to offer half day educational preschool services for children ages 3 through 5. **This is the primary focus of the facility.**
- To accommodate working parents, the center will also offer 100 AM slots and 100 PM slots for children ages 3 through 5 who attend preschool at the facility therefore allowing the child to attend school for an entire day.

Fees for Service

Cost of Care - Average Full Time Weekly Care:

Joplin, MO	Weekly Cost of Care
Center-Based Care	\$111
Family Child Care Programs	\$77

Cost of Care - Proposed Services:

Joplin Early Childhood	Weekly Cost of Programming
Special Education (continued service)	none
Title I - At Risk (continued service)	none
Half Day Before / After Program Care	\$88

Total Capital Budget (Revenues)

CDBG revenues:		
State of Missouri (proposed)	\$5,000,000	
City of Joplin (proposed)	\$5,000,000	
Total Revenues		\$10,000,000

Total Capital Budget (Expenditures)

Building construction (includes construction, professional services, and contingency)	\$9,650,000	
Grant administration services:		
Grant Administration, Activity Delivery	\$250,000	
• Joplin Schools Project Management (City of Joplin, source)	\$50,000	
• Joplin Schools Project Management (State of MO, source)	\$50,000	
Land - donated by Mercy	\$0	
Total Expenditures		\$10,000,000

***Joplin Schools will contribute up to \$125,000 FF&E for classrooms. Purchases will be based on need. Early Childhood, through sustained revenues, will reimburse the district's effort for upfront FF&E purchases.**

Enrollment Projections

Projected number of students in building AM: 260

Projected number of students in building PM: 260

These slots are a combination of Early Childhood Special Education students, Title I students, typical peers, and children enrolled in fee-based child care. All areas of service considered, it is anticipated an unduplicated count of 320 children will be served throughout the day--6:00AM-6:00PM.

Response to Growth

- Based on the current waiting list of 139, the Early Childhood program expects to operate at full capacity within Year One. Over the 5-year period reflected in the operating budget, should the demand for Early Childhood spaces increase, fewer child care spaces will be available.
- To accommodate for future growth Joplin Schools will plan a design that will allow for easy expansion and maximization of existing spaces within the facility to be constructed North of Irving Elementary. Future planning beyond this project may focus on the construction or renovation of existing sites to serve the growing Early Childhood population.

Five Year Operating Budget Overview

Year	Revenue	Expenditures	Revenue Over Expenditures
Year One	\$2,410,990	\$2,198,657	\$212,333
Year Two	\$2,458,215	\$2,257,124	\$201,091
Year Three	\$2,542,020	\$2,321,272	\$220,748
Year Four	\$2,592,042	\$2,387,352	\$204,690
Year Five	\$2,678,728	\$2,455,431	\$223,297
TOTAL	\$12,681,995	\$11,619,836	\$1,062,159

Project Summary

- Estimated cost of project: \$10,000,000
- Total square footage: approximately 40,000 sq ft.
 - Estimating \$200 per square foot for facility
 - The GSA estimate for constructing child care facilities nationwide is currently \$175-\$200
- This budget includes:
 - Safe room reinforcements
 - ADA specifications
 - Broadband and technology inclusions to serve special needs children
- As with all of the buildings in the Joplin School District, this facility will be constructed to serve children and promote learning. Joplin Schools has a dedicated budget for this project and shall stay within the confines of that budget.



Thank you for
partnering with Joplin
Schools to provide
quality education and
services to the Early
Childhood population
of the Joplin
community.