

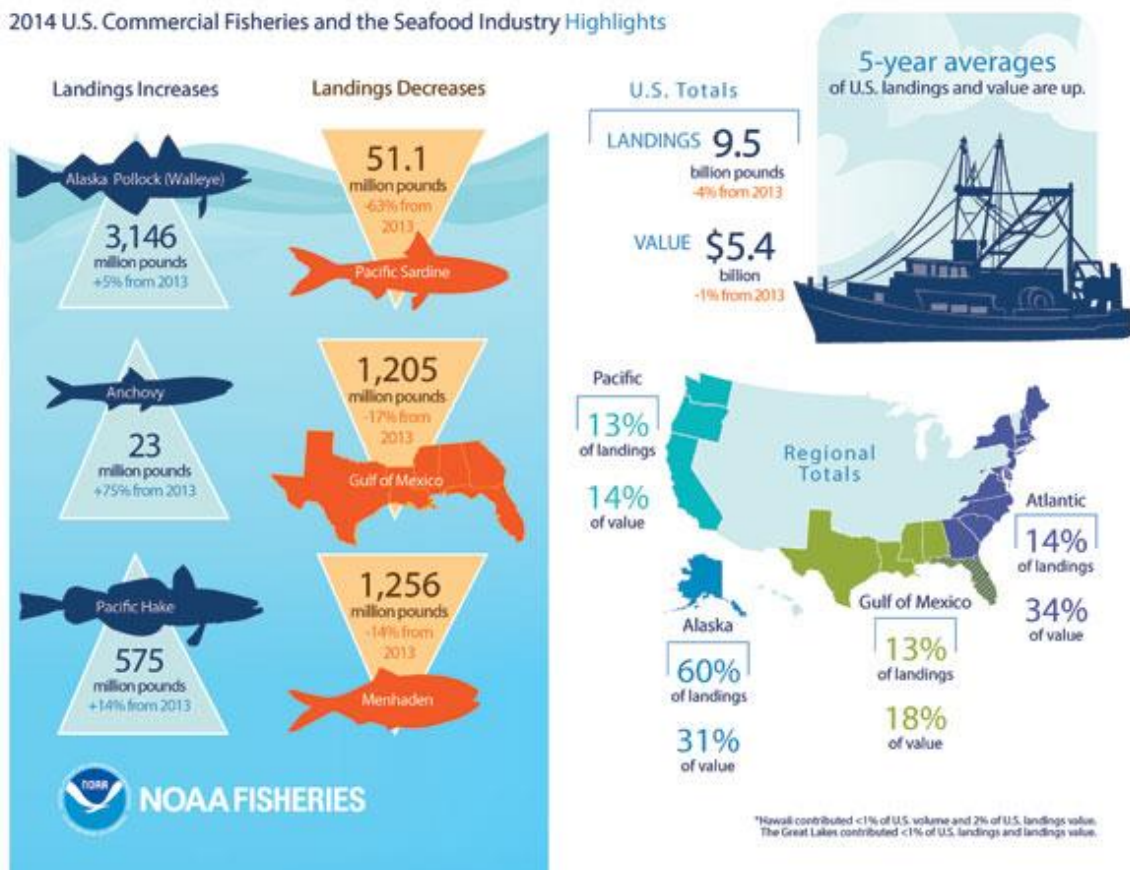
WEEKLY UPDATE: 11/2/2015
NORTH CAROLINA FISHERIES ASSOCIATION
"Serving the Commercial Fishing Families of North Carolina since 1952"
Phone: (252) 745-0225 - www.ncfish.org
Jerry Schill, President: jerryschill@ncfish.org Cell: 252-361-3015
Lauren Morris, Membership/Operations Manager:
laurenmorris@ncfish.org Cell: 252-725-2468

REMINDER: [WEBINAR](#) Q&A SNAPPER GROUPER REGULATORY AMENDMENT 25 TONIGHT!

NOAA REPORT FINDS 2014 COMMERCIAL CATCH OF U.S. SEAFOOD ON PAR WITH 2013

Dutch Harbor, Alaska, and New Bedford, Mass., remain top fishing ports; recreational anglers took 68 million fishing trips in 2014.

America's commercial and recreational fisheries show continued stability and make a large contribution to the nation's economy thanks to sustainable fisheries management policies, according to a new report from NOAA Fisheries. U.S. fishermen landed 9.5 billion pounds of fish and shellfish, valued at \$5.4 billion, in 2014, according to the new edition of NOAA Fisheries' annual report, Fisheries of the United States 2014, released today. These figures are similar to those from 2013; both the volume and value continue to remain higher than the average for the past five years. Figures for recreational fishing activities remained strong; 10.4 million anglers took 68 million trips and caught nearly 392 million fish in 2014. See the full report [here](#).



MAFMC COLLABORATIVE RESEARCH COMMITTEE MEETING

The council's Collaborative Research Committee will meet [via webinar](#) on Friday, Nov. 13, 2015 from 9 a.m.-12 p.m. to identify research priorities for the council's upcoming collaborative research funding opportunity. The council has undertaken a short-term (2015-17) initiative and intends to provide funding for several projects that address specific, council-defined research topics pertaining to mid-Atlantic fisheries. During this meeting, the committee will identify approximately 4-6 research priorities which will be used to guide the solicitation of proposals and selection of projects to receive funding. A detailed agenda and background documents will be made available on the council's website prior to the meeting.

ASMFC 74TH ANNUAL MEETING AGENDA AND MATERIALS

DEADLINES:

Nov. 4 - Atlantic HMS SEDAR Pool Nominations

Nov. 9 - NMFS [Proposed Rule on ICCAT Bluefin Electronic Documentation](#) Comments

Nov. 16 - [SAFMC Proposed Federal Management Measures](#) Comments

Nov. 19 - [Derelict Fishing Gear Recovery Project](#) Applications

Dec. 16 - NMFS [Draft Ecosystem-based Fishery Management Policy](#) Comments

MEETINGS:

If you are aware of ANY meetings that should be of interest to commercial fishing that is not on this list, please contact us so we can include it here.

Nov. 2 at 6 p.m. - [Question and Answer Webinar for Snapper Grouper Regulatory Amendment 25](#)

Nov. 2-5 - [ASFMC Annual Meeting](#), World Golf Village Renaissance, St. Augustine Resort, 500 Legacy Trail, St. Augustine, FL

Nov. 9 at 6 p.m. - [SAMFC Snapper Grouper Regulatory Amendment 25 Public Hearing](#)

Nov. 9-10 - [Summer Flounder, Scup, and Black Sea Bass Monitoring Committee Meeting](#), Providence Biltmore, 11 Dorrance Street, Providence, RI

Nov. 12 at 6 p.m. - [SAFMC Dolphin Wahoo Regulatory Amendment 1 Public Hearing to address commercial trip limits for dolphin](#)

Nov. 13 at 9 a.m. - [MAFMC Collaborative Research Committee Meeting via webinar](#)

Nov. 17 at 4 p.m. - [Summer Flounder, Scup, and Black Sea Bass Advisory Panel Meeting](#) via webinar

Nov. 18-20 - Marine Fisheries Commission Meeting, Jennette's Pier, 7223 South Virginia Dare Trail, Nags Head

Nov. 18-20 - ASFMC [River Herring Data Collection Standardization Workshop](#), Linthicum, MD

Nov. 30 at 12:30 p.m. - NCFA Board of Directors Meeting, Washington Civic Center, 110
Gladden St., Washington

PROCLAMATIONS:

[SCUP - COMMERCIAL FISHING OPERATIONS - ATLANTIC OCEAN-NORTH OF CAPE
HATTERAS](#)

[SPINY DOGFISH-COMMERCIAL FISHING OPERATIONS](#)

[SNAPPER-GROUPER COMPLEX - COMMERCIAL PURPOSES \(YELLOWTAIL SNAPPER\)](#)

[GILL NETS - ALBEMARLE SOUND AREA- MANAGEMENT UNIT A-OPENING PORTIONS
OF ALBEMARLE SOUND AND TRIBUTARIES](#)

[RULE SUSPENSION - GILL NET RESTRICTIONS: INTERNAL COASTAL WATERS -
OPENING MANAGEMENT UNITS B AND D1](#)

[2015-2016 OYSTER MECHANICAL HARVEST RESTRICTIONS](#)