

# Stony Creek Bead Class Schedule

## August 2015

---

### Flower Lattice

Thursday August 13th 6:00 to 8:00pm \$30

Instructor: Cathy Andrews

Experience Level - Beginner

Use SuperDuos to create a little flowers and connect them together with tile beads and firepolish. This is a perfect project if you have never done bead-weaving before. The color combinations are endless.



### Royal Pendant

Saturday August 15<sup>th</sup> 10:30 to 12:30pm \$30

Instructor: Cathy Andrews

Experience Level - Beginner

Use Pearls and Swarovski crystals to make this pendant. You will feel like royalty when you wear it.



### Wrap Bracelet

Tuesday August 18th 6:00 to 8:00pm \$30

Instructor: Kim West

Experience Level - Beginner

Learn how to make a trendy wrap bracelet out of leather cord and beads. These are so fun and you can wear many at a time to create a layered look.



### Courtland

Thursday August 20th 6:00 to 8:00pm \$30

Instructor: Cathy Andrews

Experience Level - Beginner

Use SuperDuos and seed beads to bezel around a rivoli to create a dramatic piece. This design is going to be published in an upcoming magazine so be one of the first to make this pendant or earrings.



## Shelley Pleines Nybakke

Shelley requires that *all students must have a good working knowledge of Right Angle Weave (RAW) before coming to these classes*. If you do not yet know RAW - let's talk right away about classes, private lessons, and/or books that can get you to where you need to be.

Since Shelley is coming to us from out-of state, we will not give any refund for cancellations unless we can fill your spot from the wait list. Thank you for your understanding.

### Kisses on the Bottom

**Saturday August 22nd 10:30am-4:30pm \$90**

The first time I ever had the name before I had the project. I wrote this name down several years ago to use and was finally inspired with a few kisses. Layered Right Angle Weave.



### Round the Bend

**Sunday, August 23rd 10:30am - 4:30pm \$90**

I would love to say it's my genius engineering skills, but it wasn't. It was a mistake. A good mistake where I just kept going to see what it would do. And what it did was something very very unique. Lovely gradual curves all around your wrist. Right Angle Weave of course.



### Basic Stringing

**Tuesday August 25<sup>th</sup> 6:00 to 8:00pm \$30**

**Instructor: Kim West**

**Experience Level - Beginner**

Just about everyone can string beads on a wire, but you will learn the techniques needed to design a bracelet, and to make jewelry that fits and stays securely fastened.



### Tulip Tassel Earrings

**Thursday August 27<sup>th</sup> 6:00 to 8:00pm \$30**

**Instructor: Kim West**

**Experience Level - Beginner**

You will learn the basic wire-wrapping technique to make these trendy tassel earrings. These earrings have a lot of movement and you will be sure to get compliments. You can also use the same technique to make a matching pendant.



### Stony Creek Bead

2060 Whittaker Rd ~ Ypsilanti, MI 48197 ~ T-F 10-6; Sat 10-5; Closed Sunday and Monday  
StonyCreekBead.blogspot.com

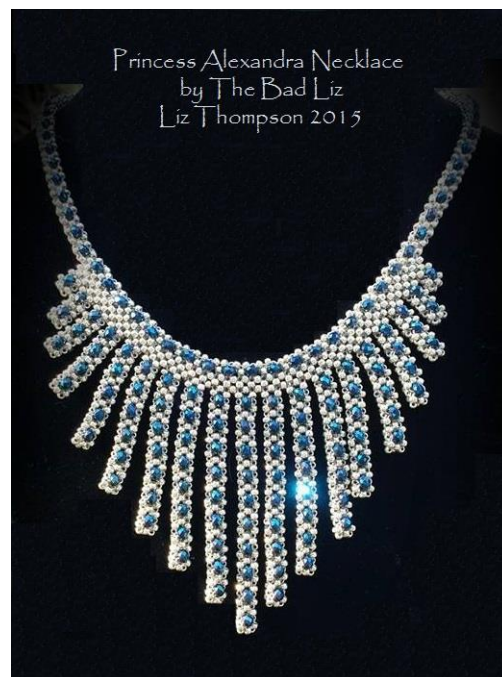
### Princess Alexandra Tiara Necklace

Saturday August 29<sup>th</sup> 1 to 4pm \$45

Instructor: Liz Thompson

Experience Level - Intermediate

In trying to replicate the Princess Alexandra Tiara which was made in 1888, I was frustrated that it didn't work. Now, it's a stunning necklace!



**These photos never do the projects justice!**

It is hard to see small details and real colors in print. Please visit our store to see the actual projects and sign up for classes.

Remember, first person to pay for class, gets the spot – so, register *now* for the classes that you want! 734.544.0904

## Stony Creek Bead's Class Sign-Up & Attendance Policies

The following policies are in place to insure an enjoyable learning environment for you as a student, and to express respect for the teacher and your fellow students.

- **Do Not Wear Perfume** (or strongly perfumed lotions, etc.) the day of class. Several of the teachers and students have allergies, asthma, or sensitivities to perfume. Please be considerate in this matter.
- **Prices listed are for the teacher fee only. Materials are extra.** A tool kit (containing pliers, cutters, scissors, etc.) is available for your use during class. Exception: Beading needles for thread-work classes.
- **Payment in full is required at the time you sign up for a class.** We accept phone registrations with a credit card.
- **You must pre-register so we may prepare properly.**
- **We reserve the right to cancel any class where the minimum number of students is not met.**
- **For private lessons, we reserve the right to enroll other students for the same lesson at the same time.**
- **No refund will be given if you cancel less than 48 hours prior to class.**
- **Only the students signed up for class may attend.** Family or friends cannot "hang out" in the classroom.
- **Students must be at least 13 years old.**
- **Please arrive 15-20 minutes before class starts.** Due to time limitations, teachers will not be able to repeat instructions if you are late.
- **Cell phones and pagers *must* be set to "courtesy mode."** Please step outside the classroom to answer the call or have the conversation. No exceptions.
- **If you normally wear glasses** to read, bead, or do other crafts, please bring them to class.

### Stony Creek Bead

2060 Whittaker Rd ~ Ypsilanti, MI 48197 ~ T-F 10-6; Sat 10-5; Closed Sunday and Monday  
StonyCreekBead.blogspot.com