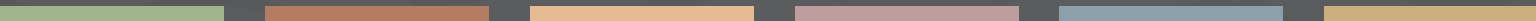




NEW PRODUCT GUIDE

WOODGRAIN SHUTTERS, BEAMS & TRUSSES



Style + Performance + Service = The Fypon Advantage

Fypon gives design and construction professionals an edge over other interior and exterior design building materials. Fypon marries style and performance with one of the industry's largest product offerings and best customer service to give our customers a true competitive edge.

STYLE

Fypon is the recognized leader in polyurethane product design, innovation and molding technology. From old world style to classic modern design, Fypon offers the largest and most architecturally correct styles and designs of moulding and trim, shutters and beams.

- Architecturally correct and historically accurate product styles and designs
- Molded from actual timber and stone products to capture the texture, patterns and deep shadow lines of classic building materials
- A distinctive look and personality to complement any home design for maximum appeal

PERFORMANCE

Only Fypon engineers consistent quality and long lasting performance into every product we make, today and tomorrow. From our popular trim and mouldings to our growing shutter and beam offerings, each product is manufactured by experts in polyurethane molding technology. All Fypon building products:

- Are easy to install with no special tools or extra labor necessary
- Deliver consistent workmanship and product quality
- Feature low maintenance
- Provide weather and moisture resistance
- Come stain or paint ready
- Resists insects and won't warp, crack or split

SERVICE

From one leader to another, building professionals trust Fypon to deliver on the jobsite and to the bottom line.

- Fypon provides architects and builders with renderings and marketing support for blue prints and model homes
- Receive extensive builder support including an industry first quote package program with quantity pricing tools available at CPS@fypon.com
- We provide installation FAQ (frequently asked questions) and support from master craftsmen
- Plus custom design services for historical restorations, replicas or any unique profile that fits your home or commercial application available at CPS@fypon.com

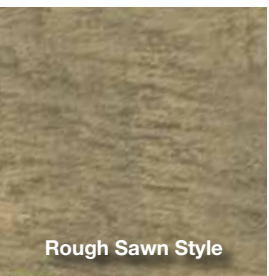
UNDERSTANDING THE NEW PRODUCT GUIDE

Choose our Timber products for your project according to the guidelines below:

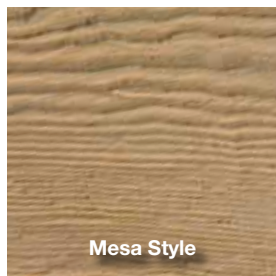
- Shutters are sold in pairs
- Board panels for shutter fabrication, are sold individually and in contractor packs
- All Timber products come factory-primed and are ready for stain or paint. (Neutral oatmeal color primer, unless otherwise noted)



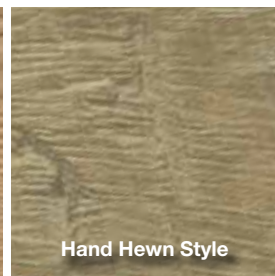
TEXTURES



Rough Sawn Style



Mesa Style



Hand Hewn Style



Tahoe Style



CUTTING & MILLING

Fypon polyurethane products can be cut and trimmed with standard woodworking tools.

- Table saws, circular saws, jig saws, band saws and miter saws will give you excellent results during the installation process.
- Trimming textured product will remove the texture and create an exposed polyurethane edge. This edge must be patched with standard wood filler and finished with paint or stain to protect the exposed polyurethane from discoloration from the sun.

For our complete timber & stone product offering, please refer to our Timber & Stone Catalog or visit www.fypon.com.



BEAMS & TRUSSES



Fypon has expanded its woodgrain beam line-up. With this new line-up you now have a choice of 2 new woodgrains as well as new lengths to choose from for that beam or truss look that adds style to any home.

- In addition to our existing Mesa and Tahoe woodgrains, we have expanded our offering to include Rough Sawn and Hand Hewn woodgrain styles. All our beams offer a realistic wood texture that's difficult to distinguish from real wood.
- We have also expanded our beam lengths, now ranging from minimum 8' to 24', available in 2' increments
- For that added look of distinction, Fypon has matching beam straps and plates for a more authentic look





FYPON BEAM ADVANTAGES VS. WOOD

FYPON BEAMS	WOOD BEAMS
 Easy install; approx. 5-7 times lighter than wood, less labor required	 Heavy, requires additional labor to install
 6"x8" price per foot = \$24	 6"x8" price per foot = \$40
 Will not warp, crack, or split	 Allows for expansion/contraction
 More styles available in numerous sizes in all markets	 Wood species available in limited sizes and not in all markets

Source: Fypon & local wood beam dealer

- Polyurethane beams require no additional structural support, which means significant savings in material and labor; it also provides the opportunity for homeowners to request beams or a truss system in the late stages of a project
- With Fypon lightweight beams, less requirements for additional wall support structure, offers more design options for architects, builders, contractors

BEAMS

Additional Sizes Available

Available in 24" increments, from 96" to 288"

ROUGH SAWN

CEDAR



BMR4X6X96CDR
Beam
Rough Saw
Width Height Length
Cedar

BMR4X6X96CDR

BMR4X6X144CDR

BMR4X6X192CDR

BMR4X6X240CDR

BMR4X6X288CDR

BMR6X8X96CDR

BMR6X8X144CDR

BMR6X8X192CDR

BMR6X8X240CDR

BMR6X8X288CDR

BMR8X10X96CDR

BMR8X10X144CDR

BMR8X10X192CDR

BMR8X10X240CDR

BMR8X10X288CDR

MESA*

REDWOOD



BMM4X6X96RDW

BMM4X6X144RDW

BMM4X6X192RDW

BMM4X6X240RDW

BMM4X6X288RDW

BMM6X8X96RDW

BMM6X8X144RDW

BMM6X8X192RDW

BMM6X8X240RDW

BMM6X8X288RDW

BMM8X10X96RDW

BMM8X10X144RDW

BMM8X10X192RDW

BMM8X10X240RDW

BMM8X10X288RDW

BMM10X15X240RDW





HAND HEWN

ELM



BMH4X6X96ELM
BMH4X6X144ELM
BMH4X6X192ELM
BMH4X6X240ELM
BMH4X6X288ELM

BMH6X8X96ELM
BMH6X8X144ELM
BMH6X8X192ELM
BMH6X8X240ELM
BMH6X8X288ELM

BMH8X10X96ELM
BMH8X10X144ELM
BMH8X10X192ELM
BMH8X10X240ELM
BMH8X10X288ELM

TAHOE

CEDAR



BMT4X6X96CDR
BMT4X6X144CDR
BMT4X6X192CDR
BMT4X6X240CDR
BMT4X6X288CDR

BMT6X8X96CDR
BMT6X8X144CDR
BMT6X8X192CDR
BMT6X8X240CDR
BMT6X8X288CDR

BMT8X10X96CDR
BMT8X10X144CDR
BMT8X10X192CDR
BMT8X10X240CDR
BMT8X10X288CDR



Nominal Dimensions	Actual Dimensions**	Side Wall Thickness**	Inside Width**
4" X 6"	3 1/2" X 5 1/2"	3/4"	2"
6" X 8"	5 1/2" X 7 1/2"	3/4"	4"
8" X 10"	7 1/2" X 9 1/2"	3/4"	6"
10" X 15"	9 1/8" X 14 3/4"	3/4"	7 5/8"

Note: New beam inside dimensions are 1 1/4" wider to accommodate a standard 2" x 6", 2" x 8", 2" x 10", blocking application.

* Mesa beam only offered in 10" X 15" size

** +/- 1/4"

BEAM STRAPS

BMSTRPS4X6

Beam Strap	Width	Height
	Smooth	

Smooth Texture



- BMSTRPS4X6 [4"X6"]
- BMSTRPS6X8 [6"X8"]
- BMSTRPS8X10 [8"X10"]
- BMSTRPS10X15 [10"X15"]

Hammered Texture

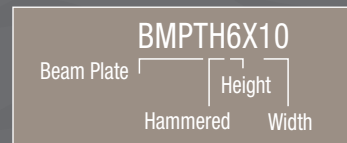


- BMSTRPH4X6 [4"X6"]
- BMSTRPH6X8 [6"X8"]
- BMSTRPH8X10 [8"X10"]
- BMSTRPH10X15 [10"X15"]





BEAM PLATES

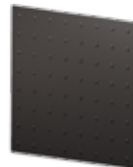


Smooth Texture



BMPTS6X10
BMPTS8X10
BMPTS10X15
BMPTS15X20

Smooth Texture



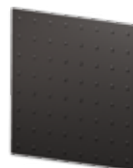
BMPTS36X36*
BMPTS48X48*

Hammered Texture



BMPTH6X10
BMPTH8X10
BMPTH10X15
BMPTH15X20

Hammered Texture



BMPTH36X36*
BMPTH48X48*

* Beam plate can be cut to fit your specific project requirement

* Beam plate can be cut to fit your specific project requirement
Note: Nut and bolt heads are included (packaged separately)

TRUSS SYSTEM MADE EASY

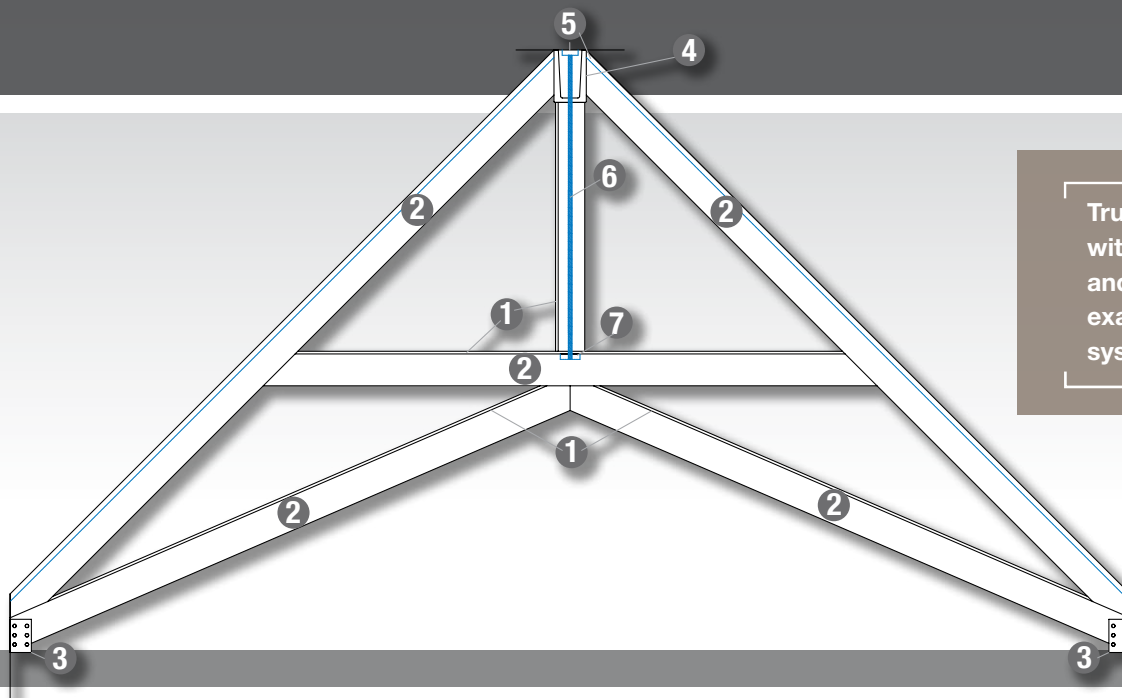


* Installed truss system can be viewed at M/I Homes of Houston, McKenzie Park Model at 4922 Tres Lagos Drive - <http://www.mihomes.com/McKenzieTresses>



Create a custom ceiling truss system using Fypon standard products and watch your reputation soar! Unlike heavy timber pieces, lightweight Fypon polyurethane woodgrain beams, straps and trim can easily be installed in vaulted ceiling areas. Forget about the challenges of extra support and weight; Fypon custom truss systems make an impressive statement without the need of extra support and labor typically required for wood applications. Need assistance? Fypon experts can provide free layouts and takeoffs for your project! Contact CPS@fypon.com

FYPON GUIDE TO CREATING A TRUSS SYSTEM



Truss systems can be built with different beam styles and sizes. Below is an example of a popular truss system currently in use.

Parts Used:

- 1 **FLT187-12S | FLAT TRIM** [Qty: 4]
- 2 **BMM8X10X234S | MESA BEAM** [Qty: 5]
- 3 **BMSTRPM8X10 | BEAM STRAP** [Qty: 2]
- 4 **BMM10X15X234S | MESA BEAM** [Qty: 1]
- ADH1 | 10.2 OZ PL PREMIUM ADHESIVE** [Qty: 1]

- 5 **2x6x16 LUMBER** [Qty: 3]
- 6 **7' ALL-THREAD** [Qty: 1]
- 7 **2"x SUPPORT BLOCK** [Qty: 1]

Note: These Fypon items will complete the construction of a single truss.

Items not sold by Fypon

- 1 The 2x6's are mounted and secured to the ceiling drywall as support blocks.
- 2 The beams are secured over the 2x6's using PL premium and trim head screws.
- 3 A 7' All-thread is secured to the ridge of the ceiling with the 2" x support block (trimmed to fit) attached to bottom of All-thread.
- 4 The horizontal beam is then installed and secured at the ends as well as in the center to a block at the bottom of the All-thread.
- 5 The two diagonal beams are then mounted and secured to the wall and the horizontal beam.
- 6 The FLT187-12S is cut and used to cap off/close-in the horizontal, vertical and diagonal beams using PL Premium and trim head screws.
- 7 The beams are stained to customer's choice. *(Product can be stained or painted prior to installation.)*
- 8 The 2 - BMSTRPM8x10 are secured where the truss and the wall meet.
- 9 Optional, beam plate (cut to size) and installed to cover the seams where the horizontal, vertical and diagonal beams meet in the center, see page 21.



For complete homeowner lifetime limited warranty details, exclusions and limitations, please see your purchase location or visit www.fypon.com.

1750 Indian Wood Circle | Maumee, OH 43537 | Phone: 800.446.3040 U.S. and Canada
Fax: 800.446.9373 U.S. and Canada | www.fypon.com | info@fypon.com

©2016 Fypon, LLC. All rights reserved. Fypon and the Fypon Logo are trademarks of Fypon, LLC. Fypon, LLC, and its parent company Therma-Tru Corp. are part of Fortune Brands Home & Security, Inc. All trademarks are property of their respective owners.

Publication No. MAFYPG2016 METZ / JAN 2016