

Texas Society for Histotechnology, Inc.
38th Annual Symposium/Convention
Houston Galleria JW Marriott Hotel
5150 Westheimer Road
Houston, Texas 77056
April 28-May 1, 2016

***Histology: The Art of Making the
Invisible....Visible!***

2016 Board of Directors

President	Veronica Davis
Vice President	Michelle Coker
Secretary	Stacey Gates
Treasurer	Debbie Siena
Speaker of the House	Brent Hart
Membership	Sandra Bottomley
District I Director	Kurell Coats
District I Asst. Director	Jeffrey Stark
District II Director	Sandy Christiansen
District II Asst. Director	Shea Scott
District III Director	Melmar Ordinario
District III Asst. Director	Tracy Ford

2016 Convention Committee

Convention Coordinator	Kathy Dwyer
Convention Coordinator	Sandra Bottomley
Registration Coordinator	Kurell Coats
CEU Coordinator	Kurell Coats
Exhibits/Vendor Liason	Sandra Christiansen
Awards	Pat Reeves
Career Day/Poster Contest	Hazel Dalton

Who Should Attend?

- Lab Supervisors/Managers
- Histotechnician/Histotechnologist in Clinical/Veterinary/Research settings
- Students
- Anyone who is involved in histotechnology.

Why Should I Attend?

1. **Individualized Training...** With many workshops to choose from, the 2016 symposium/convention provides an opportunity for you to design a unique schedule of training to meet your specific needs.
2. **Nationally Recognized Speakers...** Learn from national histology professionals who are successfully meeting the same challenges you face. Experience the intellectual invigoration that occurs as you exchange ideas with instructors and fellow attendees during each workshop.
3. **Exhibit Hall...** Visit the Vendor Exhibit Hall to see the latest and greatest Histology has to offer. With over 30 vendors attending our meeting each year, we have one of the best state meetings in the nation.
4. **Networking...** Meet and learn from over 200+ fellow participants who work in histology around the state.

Table of Contents

Welcome from the President	Page 3
The Weekend at a Glance	Page 4
Events and Happenings	Pages 5-6
Exhibit Hall Hours	Page 7
Workshops Friday Afternoon	Page 8-9
Workshops Saturday	Pages 10-15
Workshops Sunday	Pages 17-18
Hotel Information	Page 19
Registration Information	Pages 20-21
Membership Form	Pages 22-23



A Welcome from the President

Dear Registrants, Speakers, Vendors, and Colleagues:

The Texas Society for Histotechnology (TSH) welcomes you to the 38th Annual Symposium/Convention in Houston, Texas. The convention committee members are pleased you can join us for a few days of educational opportunities. Several months of dedicated planning has gone into the convention to provide excellent educational workshops. Thank you for being committed to continuing education and taking the time out of your busy schedules to attend the convention!

Without the time and effort of our dedicated **Speakers**, we would not be able to offer so many exciting topics this year in the field of Histotechnology, IHC, Molecular, Leadership/Management and Research. TSH appreciates such a great participation by the all of the speakers.

Also, I want to thank our wonderful **Vendors**, for without their continuous support to the field of Histotechnology we would not be successful. We appreciate the vendors for taking time out

of their demanding schedules to provide the latest and greatest equipment and supplies for all the attendees to view. So, please enjoy the workshops, exhibits, and social activities.

Make new friends and reconnect with the old ones. Have a wonderful **TSH** learning experience and come again next year. Thanks for your SUPPORT!

Sincerely,

Veronica Davis, HT (ASCP)

President

Texas Society for Histotechnology, Inc.

MEETING EVENTS AT A GLANCE

Friday April 29, 2016

**12:00pm-5:00pm
Exhibitor Set Up**

**9:00am-2:00pm
Career Day**

**10:00am-12:00pm
Executive Board Meeting**

**10:00am-6:00pm
Registration Open**

**1:00 – 4:30pm
Workshop # 1**

**Symposium #A
Symposium #B
Symposium #C**

**4:30pm-6:00 pm
House of Delegates Meeting**

**6:30pm to 9:00pm
Presidents Reception
Exhibit Area**

Saturday April 30, 2016

**7:00am-8:00am
First Time Attendee Breakfast**

**8:00am-11:30am
Workshops #2-6**

**9:00am-11:30pm
Exhibits Open for Attendees**

**11:45am -1:00pm
TSH Membership/Award
Luncheon**

**2:00pm-5:00pm
Exhibits Open for Attendees**

**1:00pm-4:30pm
Workshops # 7-13**

**5:15pm-5:45pm
District Meetings
Rooms to be determined**

**6:00pm-7:30pm
Vendor/Attendee
Happy Hour
Exhibit Area**

Sunday May 1, 2016

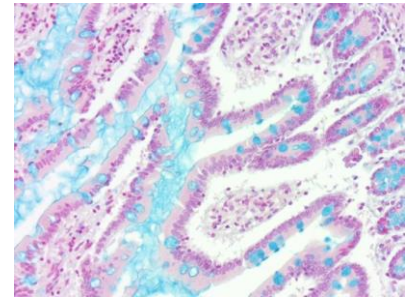
**7:00am-10:30pm
Registration open**

**9:00am-11:00pm
Exhibits Open for Attendees**

**9:00am-12:30pm
Workshop #14-16**

**1:00pm-3:00pm
Executive Board Meeting**

***Room assignments to
be included in attendee
registration packets**



Convention Events
Presidents Reception
Reconnect with friends and colleagues!
Friday, April 29, 2016
6:30p.m. – 9:00p.m.

First Timer Attendee Breakfast

Saturday, April 30, 2016

7:00 – 8:00 a.m.

If you are a first time attendee to our convention, come and enjoy this informal gathering for breakfast.

Food, Fun and Door Prizes!

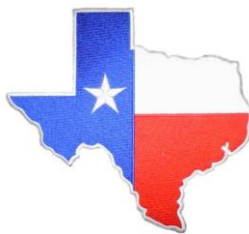
Texas Society for Histotechnology
Membership/Awards Luncheon



Saturday, April 30, 2016

11:45a.m.-1:00p.m.

***Don't miss this opportunity to recognize a fellow Histotechnologist
and/or student through our Annual Awards Program***



Calling all Superheroes!



TSH Presents...

Superhero Vendor Happy Hour!

**Dress as your favorite hero (or villain!) Prizes
for the best costumes!**

Create your own character from scratch, or go to

http://marvel.com/games/play/31/create_your_own_superhero

and design your hero from powers to costume. Then come to happy hour dressed as your character. Create a BioPage for your character and bring it with you to the party for extra credit!

Cocktails and finger foods will be served.

Visit Our Vendor Exhibit Hall!



The TSH Annual Symposium/Convention has an amazing convention planned this year. With over 30 vendors with booths in our exhibit hall, we boast one of the best conventions in the nation! See the newest technologies available in the industry, connect with your favorite vendors in person, obtain samples to take back to your labs!

Exhibits are located in the Ballroom

Exhibits Hours:

Presidents Reception

Friday April 29, 2016

6:30pm-9:00pm

Saturday, April 30, 2016

9:00am-11:30am

2:00pm – 5:00pm

6:00pm – 7:30pm

Saturday, April 30, 2016

Vendor Happy Hour

6:00pm-7:30pm

Sunday, May 1, 2016

9:00am – 1:00pm



Friday, April 29, 2016
Afternoon Workshop
1:00pm-4:30pm

Workshop #1: 3 Hours

Title: Tissue ID Made Easy

Time: 1:00pm – 4:30pm

Category: Fundamentals

Speaker: Ada Feldman, CEO, Anatech, Inc

Level: Basic

This course will cover the tissues commonly encountered in a pathology laboratory. We'll begin with an overview of the four basic tissue types (epithelial, muscle, nervous and connective) followed by a discussion of tissue structure and function. H&E and special stains of skin, stomach, intestine, kidney, tonsil, spleen, liver, lymph node, lung, prostate, breast, and uterus will be reviewed. Abnormal pathology of some tissues will be included. The material introduced will assist technicians in evaluating the quality of their stained tissues sections.

Friday, April 29, 2016
Afternoon Symposiums A-C
1:00pm-4:30pm

Symposiums must be taken together as a group

Symposium A: 1 Hour

Title: Pharmacogenetics of Target Therapy ISH and Breast Cancer

Time: 1:00– 2:00 pm

Category: IHC/Molecular

Speaker: Dr. Dale Telgenhoff, Director, Histology Program, Tarleton State University

Level: Intermediate

Historically breast cancers were classified by their microscopic morphology, cellular origin, and nodal involvement. Today there are a number of important markers which can be used to diagnose and prognose distinct subforms of the disease, and in some cases even lead to a defined course of pharmacologic treatment. This review is designed as an introduction to basic molecular biology concepts and techniques used in IHC and ISH, and discusses some important genetic considerations for the patient. We will discuss the need for directed therapies, and why pharmacogenomics is becoming more prevalent. We will examine some of the more common markers employed, as well as potential assays on the horizon.

Friday, April 29, 2016
Afternoon Symposiums A-C
1:00pm-4:30pm

Symposiums must be taken together as a group

Symposium B: 1 Hour

Title: Fatal Factors of Sick Cell Trait

Time: 2:30pm-3:30pm

Category: Specialties and Techniques

Level: Basic

Speaker: Shameika Johnson, HT (ASCP), Decedent Affairs Coordinator, Baylor University Medical Center

Sickle Cell Trait (SCT) affects nearly 300 million people worldwide. Awareness that SCT is not an entirely benign condition is growing, but many pathologists and clinicians overlook the fact that sickling may become fatal under certain conditions in patients with the trait. At autopsy, micro-occlusive sickling is identified and SCT is confirmed by postmortem hemoglobin fractionation which proves the trait to be a contributory factor to the cause of death. This workshop discusses the controversy of SCT as a contributory cause of death, and explores autopsy findings in hospitalized patients with SCT dying of natural disease. Participants will get an understanding of the difference between the trait and the actual disease. We will also take a glimpse at S/E hemaglobinopathy, a rare form of sickle disease.

Symposium C: 1 Hour

Title: Easy Lean for Histopathology

Time: 3:30pm-4:30pm

Category: Management

Level: Basic

Speaker: David MacDonald, LSSBB, BSc. MLT, Sr. Global Laboratory Solutions Consultant, Agilent Technologies/Dako Pathology

This session will discuss historical challenges across the entire histology process and non-vendor specific solutions to those challenges. Topics to be discussed: 1. Create your own solutions on your own terms; 2. Let's talk process: the 7 steps; 3. Letting design dictate activity; 4. Parallel processing; 5. Transitioning the "all or nothing" mind set; 6. "Trigger Point" Transition; 7. Sit back and "just watch me; 8. Generic specimen tracking considerations; 9. The new mantra for the histology lab.

Presidents Reception

Come reconnect with friends and colleagues from all over the region! Get a sneak peak of the Vendor Hall!

Friday, April 29, 2016

6:30p.m. – 9:00p.m.



Saturday, April 30, 2016
Morning Workshops
8:00am-11:30am

Workshop #2: 3 Hours

Title: Digital Pathology

Time: 8:00-11:30am

Category: Specialties and Techniques

Level: Intermediate

Speakers: William DeSalvo III, President, Collaborative Advantage Consulting

Elizabeth A. Chlipala, BS, HTL(ASCP)QIHC, Premier Laboratory

The workshop will address the issues and barriers that can destroy the implementation of the digital pathology solution into today's Histology laboratory. Currently, there are major forces; culture, process and standards, that are in conflict and are working to slow or stop the vital change solution required to move Anatomic Pathology from THE WAY IT IS to THE WAY IT NEEDS TO BE. We must address the fundamental changes needed to the Histotechnology process that will support a stable structure, where each step and task are dependent on each other and share the burden of quality control and assurance. There will be discussion of the importance of standardization and quality process improvement in Histotechnology and its significance to the success of implementing a digital pathology solution; utilizing the positive aspects of digital pathology technology; developing the Histotechnology improvement process, on a day to day basis, to improve overall efficiency and quality documentation and how collaborative quality will combine digital pathology technology and process improvement techniques to aid in the development of a continuous quality assurance program for routine, special and IHC stains.

Workshop #3: 3 hours

Title: Troubleshooting Your H&E

Time: 8:00-11:30 am

Category: Fundamentals

Level: Basic

Speaker: Ada Feldman, CEO, Anatech, Inc.

This workshop will help the histotech troubleshoot such common problems of smudgy nuclei, improper staining, "soap suds", haziness and more. Each step in the handling of a tissue specimen (from excision through coverslipping) has the potential of altering the expected appearance of the H & E. This workshop will review the individual steps in tissue processing (fixation through slide drying) and H&E staining (deparaffinization through coverslipping). Traditional reagents (formalin, alcohol, xylene) as well as substitute reagents (xylene substitutes, special fixatives, formalin-free fixatives) are discussed. The workshop shows "problem" slides, their respective processing and/or staining schedules and the steps necessary to correct the problem.

Workshop #4: 3 hours

Title: A New Researcher's Approach to IHC

Time: 8:00-11:30am

Category: IHC/Molecular

Level: Intermediate

Speaker: Brent Hart, HT(ASCP), QIHC, Baylor Scott and White

Cory Smith, Baylor Scott and White

As a rookie to the IHC technical application unit in the research laboratory, it was not long before I realized that the theory of "just follow a protocol" is a set up for failure. During this workshop, "A New Researcher's Approach to IHC Methods", we will share our methods of investigating a new project. From the interpretation of what the PI is truly trying to accomplish, to control selection, antibody optimization, and the final visualized signal. We will discuss all aspects of technical troubleshooting, while performing an actual IHC stain. "A New Researcher's Approach to IHC Methods" will help any histology technician who performs IHC stains. We will take a fresh approach to simplify the technical applications of IHC.

Saturday, April 30, 2016
Morning Workshops
8:00am-11:30am

Workshop #5: 1.5 hours

Title: The Business of Pathology for 2016 and Forward

Time: 8:00am-9:30am

Category: Leadership

Level: Intermediate

Speaker: Loretta Sayles, HT(ASCP), Owner, Sayles Laboratory Consulting

As the US healthcare market continues to change, this workshop will cover how the Pathology business will be affected in 2016 and also include up to date healthcare news out of Washington. At the end of the workshop, you will have a better understanding of how and why our business has changed. Lastly, we will look at solutions as we navigate through these uncertain times.

Workshop #6: 1.5 Hours

Title: Autopsy 101

Time: 10:00am – 11:30am

Category: Specialties and Techniques

Level: Basic

Speaker: Shameika Johnson, HT (ASCP), Decedent Affairs Coordinator, Baylor University Medical Center

Not only do people who aren't in the medical field know what really happens during an autopsy, but Histotechs also have no idea. Hollywood has given people an inaccurate perception of what an autopsy really is. Also, Histotechs do not even realize how important their role is in an autopsy diagnosis. This workshop will give participants an in- depth look at the actual amount of work and time it takes to perform an autopsy and reach a diagnosis. Histotechs will see how autopsies and histology go hand in hand. We will also discuss the differences between a Medical Autopsy and a Forensic Autopsy. By the end of the workshop, participants will know how crucial histology can be to an autopsy diagnosis in hopes that autopsies will no longer be treated like the step child.

Join Us for the TSH Annual Membership/Awards Luncheon



11:45 AM-1:00 PM

Be sure to nominate fellow histotechs for one our numerous awards.

Saturday, April 30, 2016
Afternoon Workshops
1:00pm-5:00pm

Workshop #7: 3.0 hours

Title: Special Stains for the HT Exam

Time: 1:00pm-5:00pm

Category: HT Preparedness

Level: Basic

Speaker: Rayen Gonzalez, BS, HT (ASCP), Central Texas Digestive Disease Association

The amount of information needed to study each stain can become a daunting task. The purpose for this workshop is to help understand and learn the mechanism of each special stain so that the information can be retrieved while taking the HT (ASCP) exam. We will go through each stain: best control, purpose for the stain, the reagents and why they are used, the mechanism of the stain and the color results. A few stains will also include an animation to show the mechanism of the stain. Those stains will have a print out of a sample study sheet for the attendees. As students prepare for the exam, this will help supplement their studying. Even reading the book to memorization, information can still sometimes not be truly learned. With this workshop, it will be easier to understand the material and allow for greater success when taking the HT (ASCP) exam.

Workshop #8: 3.0 hours

Title: MOHS Techniques

Time: 1:00pm-3:00pm

Category: Specialties and Techniques

Level: Intermediate

Speakers: Annetta Walker, HT(ASCP), Owner, Burnett-Walker Lab Solutions

This workshop will talk about the history of the MOHS procedure. We will also talk about how and why it was developed. The techniques for inking margins will be demonstrated. We will also demonstrate embedding and cutting specimens. We will share tricks for making the process easier. We will also talk about the future of the field of MOHS and the employment prospects for histotechns.



Saturday, April 30, 2016
Afternoon Workshops
1:00pm-5:00pm

Workshop #9: 1.5 hours

Title: Laboratory Ergonomics

Time: 1:00pm-3:00pm

Category: Safety

Level: Basic

Speaker: Dr. Dale Telgenhoff, Director, Histology Program, Tarleton State University

Histology laboratory employees are very familiar with health and safety issues related to chemical and biological exposure, and have extensive safety programs in place to monitor these areas. Ergonomic safety is included in these programs, but is usually a secondary consideration. According to the Occupational Safety and Health Administration, repetitive motion injuries are the nation's most common and costly occupational health problem. Repetitive strain injuries (RSIs) and cumulative trauma disorders (CTDs) are common in laboratory areas which require an over-use or misuse of muscles, tendons, and nerves. For the histotechnician this includes microtomy, working in fume hoods and computer workstations, microscopy, and pipetting. Microtomy is an area of particular concern, as the average technician uses between 40 and 50 cassettes per shift, turning the microtome wheel at least 1000 times in an 8 hour period. In this workshop we will discuss the causes of work related musculoskeletal disorders, the symptoms, risk factors, and strategies to avoid long-term injuries. Additionally we will discuss how to perform an ergonomic assessment in your laboratory to identify and rectify potential problem areas.

Workshop #10: 1.5 hours

Title: Looking for Targets

Time: 3:30pm-5:00pm

Category: IHC/Molecular

Level: Intermediate

Speaker: Fatima Natar, HT(ASCP), QIHC, Field Service Representative, Dako North America, Agilent Technologies

Prior to the late 1990's, nearly all chemotherapy targeted cells in the process of DNA replication with the hopes of damaging the tumor tissue at a faster rate than normal tissue. New FDA-approved therapies utilize signal transduction pathways, apoptosis, and immune therapy among other mechanisms to target tumor tissue and minimize damage to normal tissue. Testing the patient's protein specific biomarker provides the target for the FDA-approved drugs. Patient subpopulations impacted by targeted therapies range from patients with HER2/neu, EGFR, c-Kit, ER/PR, KRAS, ALK1, BRAF, and PD-L1 expression profiles. Identification of these specific biomarker targets gives patients access to FDA-approved therapies such as Herceptin, Gleevec, Erbitux, Xalkori, Keytruda, and Opdivo. This presentation will discuss biomarker methodology and therapy mechanisms.

Saturday, April 30, 2016
Afternoon Workshops
1:30pm-5:00pm

Workshop # 11: 1.5 hours

Title: IHC as a Guide to DNA-based HER2 Testing in Breast and Gastric Cancer

Time: 1:00pm -3:00pm

Category: IHC/Molecular

Level: Intermediate

Speaker: Shelley Gunn, MD, Ph.D, F.A.C.P., Medical Director of Genomic Pathology Section, Precision Pathology Services

The 2013 CAP/ASCO guidelines recommend reflex testing of the HER2 gene on chromosome 17 by FISH when protein-based testing by immunohistochemistry (IHC) is 2+/equivocal. As most pathology laboratories do not perform DNA-based testing in-house, FFPE tissue is generally sent to outside laboratories for FISH and other molecular testing methodologies unaccompanied by the IHC slides from the original laboratory. In tumors with HER2 heterogeneity, IHC gives pathologists the best visualization of the tumor areas most likely to be HER2+. Without an IHC guide to choose the best cells for scoring of HER2 FISH, or targeting likely HER2+ areas of the tumor for DNA-based molecular testing, HER2+ breast and gastric cancers can be missed and incorrectly reported as HER2 negative by reflex testing. In this workshop we will begin with a review of the biology of HER2-driven breast and gastric cancer and explore the rationale behind available testing methodologies. A protocol for the use of IHC as a guide to DNA-based testing will be presented followed by case presentations of HER2 equivocal breast and gastric cancer. We will conclude with a discussion of the critical role pathologists and histotechnicians play in the delivery of Precision Medicine to breast and gastric cancer patients.

Workshop #12: 1.5 hours

Title: Grossing In Histotechnology

Time: 3:30pm-5:00pm

Category: Fundamentals

Level: Basic

Speaker: Min He, HTL (ASCP), M.D. Professor of Histologic Technician Program, HCC Coleman College

Grossing specimens is the critical step for correct diagnoses. As the front line of the histopathology lab, grossing not only provides the grossing description/pre-diagnosis for pathologists, it also decides how the histotechnicians will process, embed, section and stain the specimen. It is important for histotechnicians to understand what is done in the grossing room and connect the grossing to routine histology practice. In this workshop, grossing knowledge and techniques for different types of specimens will be presented and the safety concern related to grossing will be highlighted. Proper fixation or handling on different types of specimen is crucial on further test and accurate diagnoses. The rule and principle of fixation or proper handling specimen when first received in grossing room will be explained. Various approaches avoiding medical error in grossing room will be introduced. This workshop will also address the role of histotechnicians in the grossing room and how to communicate with PAs and pathologists to guarantee the good quality of slides.

5:15pm to 5:45pm TSH District Meetings
Open to All Attendees Please Join Us
Rooms to be announced



TSH Presents Superheroes! Attendee/Vendor Happy Hour

In the Vendor Exhibit Hall

Dress as your favorite Superhero or Villain!

Prizes for Best costumes!

Saturday April 30, 2016 6:00p.m.-7:30p.m.

Enjoy a relaxed visit with all of your favorite vendors!

Vendor Donated Prizes!

Must be present to win!

Come join the fun!!!!



Sunday, May 1, 2016
Workshops
9:00am-12:30am

Workshop #13: 3.0 Hours

Title: Studying for the QIHC Exam

Time: 9:00am – 12:30pm

Category: Leadership

Level: Basic

Speaker: Jeffrey Stark, HTL(ASCP), QIHC, Histology Supervisor, Miraca Life Sciences

In this workshop, we will discuss how to study for the ASCP QIHC test. We will review how monoclonal and polyclonal antibodies are produced, their basic structure, and the different antibody classes. Attendees will know how to handle both the specimen and their slides before the immunological staining process even begins. I handled incorrectly from the start, all of the time put into the staining process downstream will be wasted. We will go over the basic immunological staining process from epitope enhancement to detection systems, thereby showing the attendees what cell components get demonstrated and their staining patterns. We will review troubleshooting, tissue control selection, antibody titrations, validation of antibodies, and laboratory math. Finally, we will introduce new and upcoming in-situ hybridization staining techniques of FISH and CISH and their applications in the medical field.

Workshop #14: 3.0 Hours

Title: Next Generation Histotechnology

Time: 9:00pm-12:30pm

Category: Immunohistochemistry/Molecular

Level: Intermediate

Speaker: William DeSalvo III, President, Collaborative Advantage Consulting

Histotechnology and the Histotechnologist prepares specimens for pathologist review and study of structural and functional mechanisms of disease, the cornerstone of medical diagnostic and treatment. Many new and innovative Molecular test technologies are rapidly moving into the routine Histology laboratory and tissue analysis. These technological advances are creating a new expansion in pathology applications for research, pharmaceutical and clinical and new opportunities for the Histotechnologist to become more involved in the development of patient diagnosis. There are several aspects of specimen collection, pre-analytics and processing that require adjustment and rethinking for the tissue analysis applications to succeed and the patient receive the correct result. There is a pathway to certification that many should consider now. Is your laboratory ready for molecular testing and can you confidently prepare the specimens required? Are you ready to take the next step in certification? The workshop will be a discussion of education, technology, sample selection and preparation and how the routine Histology laboratory can excel in the molecular age.

Sunday, May 1, 2016
Workshops
9:00am-12:30am

Workshop #15: 1.5 Hours

Title: Basics and Troubleshooting in IHC

Time: 9:00am- 10:30 am

Category: Regulations

Level: Basic

Speaker: Brent Heller, BS, Technical Consultant, Cell Marque, Rocklin, CA

This workshop is designed to improve basic IHC knowledge and uncover what goes on “behind the scenes” inside your IHC automated platform. It will touch on different types of detection, explaining the advantages and disadvantages of each along with how to determine the best one for your assay. We will then address the most common causes of suboptimal staining and how to troubleshoot different scenarios. Additionally, the session will open up to participants’ troubleshooting questions and we will solve them as a group.

Workshop #16: 1.5 Hours

Title: Demystifying Decalcification Techniques to Ensure Successful Routine and IHC Results

Time: 11:00am – 12:30am

Category: Specialties/Techniques

Level: Intermediate

Speakers: Debra Siena, HT(ASCP) QIHC, Technical Support Manager, Statlab Medical Products

Gary Wiederhold, HTL(ASCP), Vice President R&D, Statlab Medical Products

Knowledge of decalcification techniques is an essential skill set for today’s Hlstotechnologist to possess, even if the procedure is only occasionally performed. Tissue processing, microtomy and staining results are dependent upon proper understanding, tissue handling and exposure to these highly acidic and/or chelating chemicals. A wide variety of active ingredients exist and are used for bone demineralization and other decalcification processes, in order to work efficiently and effectively, a good understanding of what to use is very important especially when special procedures such as IHC and ISH are required. This workshop will cover the types of tissues involved, conditions and diagnostic states that contribute and exist, as well as methodologies used for various decalcification techniques. A wide range of applications will also be discussed. The chemistry and different reactions that occur will be covered as well as troubleshooting and group problem solving. A brief discussion on preparation and sectioning of un-decalcified bone will be covered, as well as how to surface decal and other tricks of the trade. The audience will come away with a better understanding of the techniques and methodologies of decalcification that will enable them to problem solve and achieve better cellular detail results in their every day work and special procedures



HOTEL INFORMATION

*Houston Galleria JW Marriott Hotel
5150 Westheimer Road
Houston, Texas 77056
April 28-May 1, 2016*

<u>Room Type</u>	<u>Single</u>	<u>Double</u>
Standard	\$129.00	\$129.00

TSH has booked the nights of **Thursday, April 28, 2016 through Sunday, May 1, 2016**. Reservations must be received by **on or before Thursday, April 7, 2016** to receive the discounted rate.

Two ways to book your hotel reservation:

- 1) Call hotel directly **1-800-228-9290**. When calling the hotel, please state that you are with the **Texas Society for Histotechnology**.
- 2) Click on the group link below that the Houston Galleria JW Marriott has provided **Texas Society for Histotechnology group or type in the web address below the link:**

[Book your group rate: TX Society for Histotechnology >>](#)

http://www.marriott.com/meeting-event-hotels/group-corporate-travel/groupCorp.mi?resLinkData=TX%20Society%20for%20Histotechnology%20^dalpt%60schscha%60130%60USD%60false%603/19/15%603/23/15%6002/19/15&app=resvlink&stop_mobi=yes

Directions:

- See link for directions to hotel <http://www.marriott.com/hotels/maps/travel/houjw-jw-marriott-houston/>
- Taxi service from George Bush International Airport (IAH) is estimated at \$65 and Hobby International Airport (HOU) is estimated at \$55.
- **This hotel does not provide shuttle service.**
- **Parking onsite for overnight guests \$20 (non-valet). All other parking is hourly.**

Hotel Amenities:

- Newly renovated rooms
- 24-hour front desk
- ATM/banking
- Bar/lounge
- Business center
- Complimentary newspapers in lobby
- Fitness facilities
- Indoor and outdoor pool
- Porter/bellhop
- Restaurant
- Galleria shopping within walking distance
- Onsite and Virtual Concierge

TSH 2016 HOUSTON CONVENTION REGISTRATION FORM

Please fill completely

DATE: _____ Check All That Apply: ☐ 1st Time Attendee ☐ TSH Member ☐ Student ☐ NSH Member

Name: _____

I would like to volunteer as a Workshop Liaison: ☐ Yes ☐ No

Workshop liaison will be required to review a training power point prior to meeting.

Mailing Address: _____

City, State, Zip: _____

Employer: _____

Work Phone () _____ Home Phone () _____

Email Address: _____

⬇ Circle your selections

FRI 4/29 PM Workshops	SAT 4/30 AM Workshops	SAT 4/30 PM Workshops	SUN 5/1 AM Workshops
1	2	7	13
Morning **Symposiums A-C	3	8	14
	4	9*	15*
	5*	10*	16*
	6*	11*	
		12*	
* 90 minute WS cannot be taken with 3 hour WS **Symposiums must be taken as a group			

	TSH Member	Non- Member	Student
3 HOUR Workshop	\$40	\$60	\$15
Mini (90 min) Workshop	\$20	\$30	\$10
Symposium A-C	\$40	\$60	\$15
Lunch	\$20	\$25	\$10
<input type="checkbox"/> Special dietary need (specify): _____ <input type="checkbox"/> Attending Presidents' Super Hero Reception Friday Night <input type="checkbox"/> Attending Saturday Night Function (Happy Hour 6-730 PM)			

ADD UP YOUR FEES:

Friday WS FEE	Saturday WS Fee	Sunday WS Fee	Lunch	Registration Fee	Grand Total	Your Payment	Balance Due
+	+	+	+	\$25	=	-	=

CHECK #: _____ CREDIT CARD: ☐ Visa ☐ MasterCard ☐ American Express
☐ Personal ☐ Corporate

Print Name: _____

Signature: _____

Number: _____ Expiration: _____ Security Code: _____ Card Billing

Zip: _____

CANCELLATION POLICY: Request for reimbursement must be made 3 weeks prior to the meeting. Total reimbursement will be 75% of full amount.

Please Send Registration form to the NEW Registration Chairman

KURELL COATS

3039 Renaissance Court
 Dallas, TX 75287

email: tsh.registration@hotmail.com

Phone: 903-360-3942

Registration Information

Registration Information

3 Ways to Register

Via Facsimile

Via Mail

On-Line

In Person

If you are unable to pre-register before April 7, on-site registration will be available at the registration desk at an increased cost.

Payment

A \$25.00 advance registration fee must be received with registration form to hold space in workshops

Registrants can pay by:

1. Check made payable to the Texas Society for Histotechnology.
2. Credit Card(Visa, MasterCard, American Express)
3. Money Order

Do Not Send Cash; No PO's accepted

Cancellations

All cancellations must be received in writing 3 weeks prior to the meeting date. Total reimbursement will be 75% of the full amount. On-Site Workshop changes will be accepted for a \$5.00 fee.

Membership Information

Why should I join TSH?

- ✓ Cutting edge educational opportunities delivered through workshops and seminars at the district and state level. Earn contact hours which qualify for the Certificate Maintenance Program.
- ✓ TSH provides a number of complimentary resources to members related to education, health and safety, and tissue control bank.
- ✓ Reduced fees for convention workshops and symposiums.

Membership Eligibility

Open to anyone actively engaged in or interested in histotechnology or other allied professions. Membership year is November 1st through October 31st.

Types of Membership

Professional: Individual gainfully employed and actively engaged and/or interested in Histotechnology or an allied health profession.

Student: Individual in a course of training in Histotechnology recognized by TSH until they are Registry eligible.

TSH membership includes a subscription to the HISTO*Texas newsletter which is published quarterly and invitations to District meetings.

Membership Annual Dues:

Member: \$40.00/year \$100.00/3 year
Student: \$15.00
Honorary: Board recommended



Texas Society for Histotechnology, Inc.

Application for Membership 2015-2016

Membership Year ♦ 1 November through 31 October

<input type="checkbox"/> Renewal -- <input type="checkbox"/> 1 year \$40 or <input type="checkbox"/> 3 year \$100	<input type="checkbox"/> New member -- <input type="checkbox"/> 1 year \$40 or <input type="checkbox"/> 3 year \$100
<input type="checkbox"/> ** Student \$15 (Speak to your Instructor/Professor and see Below for additional information required)	

Name: _____

Mailing Address: _____ ☐ New Address

City, State and Zip: _____

County: _____ ☐ District I ☐ District II ☐ District III ☐ Out of State

Employed at or School: _____

Personal telephone () - _____ - _____ Work or School telephone () - _____ - _____

☞ **Save TSH \$\$ and Go Green - Mail Preferred via E-mail** ☐ Yes ☐ No (check your junk mail for TSH e-mails)

Work Email: _____

Personal Email: _____

****STUDENT MUST BE CURRENTLY ENROLLED TO QUALIFY FOR STUDENT RATES**

Information Required

- School or College: _____
- Date student started program: _____
- Histology Program Coordinator Signature: _____

PAYMENT INFORMATION NO CASH PLEASE

CHECK OR MONEY ORDER Payable to: **T.S.H.**

☐ Personal ☐ Corporate CHECK NUMBER: _____

CREDIT CARD	<input type="checkbox"/> Visa <input type="checkbox"/> MasterCard <input type="checkbox"/> American Express	AND	<input type="checkbox"/> Personal <input type="checkbox"/> Corporate
Print Name _____	Signature _____		
Number _____	Expiration: _____	Security Code _____	Billing Zip _____

Renewal or New Membership Fees

1 year \$40

3 year \$100

Student Membership Fee

\$15

Membership Fee \$ _____

Scholarship Fund Donation \$ _____

Total Payment \$ _____

Sandra Bottomley
1701 Cottonwood Rd
Carrollton, TX 75006

Secure FAX (at home): 972-466-0788

e-mail: tsh.membership@hotmail.com

TSH Membership Information

Members

Individuals interested in the field of Histotechnology.

Student Members

Individuals who are students in an educational program of Histologic Technique recognizable by the TSH until they become Registry eligible. Student members shall have all the privileges of membership but shall be non-voting members.

Honorary Members

This category includes individuals who have made significant contributions to the field of Histotechnology and also those members who have been active members of the Society but have retired from active laboratory practice. Recommendations must be submitted to the Board accompanied, not less than sixty days prior to an annual meeting. Honorary member status shall be conferred by a majority vote approval of the House, and will be effective immediately thereafter. Honorary members have voting privileges but are not required to pay dues or fees to the Society.

District I consists of the following counties: Anderson, Andrews, Archer, Armstrong, Bailey, Baylor, Borden, Bowie, Bosque, Briscoe, Brown, Callahan, Camp, Carson, Cass, Castgro, Cherokee, Childress, Clay, Coleman, Collin, Collinsworth, Comanche, Concho, Cooke, Coryell, Cottle, Crosby, Dallam, Dallas, Dawson, Deaf Smith, Delta, Denton, Dickens, Donley, Eastland, Ellis, Erath, Fannin, Fisher, Floyd, Foard, Franklin, Freestone, Gaines, Garza, Gray, Grayson, Gregg, Hale, Hall, Hamilton, Hansford, Hardeman, Hartley, Haskell, Hemphill, Henderson, Hill, Hockley, Hood, Hopkins, Howard, Hunt, Hutchinson, Jack, Johnson, Jones, Kaufman, Kent, King, Knox, Lamb, Lampasas, Lamar, Limestone, Lipscomb, Loving, Lubbock, Lynn, McLennan, Marion Harrison, Martin, Mitchell, Miles, Montague, Moore, Morris, Motley, Navarro, Moland, Ochiltree, Oldham, Palo Pinto, Panola, Parker, Parmer, Potter, Rains, Randall, Red River, Roberts, Rockwall, Rusk, Scurry, Shackelford, Sherman, Smith, Somervell, Stephens, Stonewall, Swisher, Tarrant, Taylor, Terry, Throckmorton, Titus, Upshur, Van Zandt, Wheeler, Wichita, Wilbarger, Wise, Wood, Yoakum and Young.

District II consists of the following counties: Angelina, Austin, Bastrop, Bee, Bell, Brazoria, Brazos, Brooks, Burleson, Caldwell, Calhoun, Cameron, Chambers, Colorado, DeWitt, Duval, Falls, Fayette, Fort Bend, Galveston, Goliad, Gonzales, Grimes, Hardin, Harris, Hildalgo, Houston, Jackson, Jasper, Jefferson, Jim Hogg, Jim Wells, Kenedy, Kleberg, Lavaca, Lee, Leon, Liberty, Madison, Matagorda, Milam, Montgomery, Nacogdoches, Newton, Nueces, Orange, Polk, Refugio, Robertson, Sabine, San Augustine, San Jacinto, San Patricia, Shelby, Starr, Trinity, Tyler, Victoria, Walker, Waller, Washington, Webb, Wharton, Willacy and Zapata.

District III consists of the following counties: Aransas, Atascosa, Bandera, Bexar, Blanco, Brewster, Burnet, Cochran, Coke, Comal, Crane, Crockett, Dimmi, Duval, Ector, Edwards, El Paso, Frio, Gillespie, Glasscock, Guadalupe, Hays, Hudspeth, Irion, Jeff Davis, Karnes, Kendall, Kerr, Kimble, Kinney, LaSalle, Live Oak, Llano, Mason, McCulloch, McMullen, Maverick, Medina, Menard, Pecos, Presidio, Reagan, Real, Reeves, Runnels, San Saba, Schleicher, Sutton, Terrell, Tom Green, Travis, Upton, Uvalde, Val Verde, Ward, Williamson, Wilson, Winkler, and Zavala

Texas Society for Histotechnology, Inc.
1701 Cottonwood Rd.
Carrollton, Texas 75006