

# URBAN JUNKET BATTERY BAG DETAILS

## What is included:

### JOEY™ BATTERY & PORT

- Lithium polymer Joey™ battery recharges your devices for up to 10 days of partial charges or two full smart phone charges
- Unit weighs only 5.5 ounces
- TSA-Safe — no need to remove at security checkpoints.
- Water resistant



### USB / MICRO-USB CORD

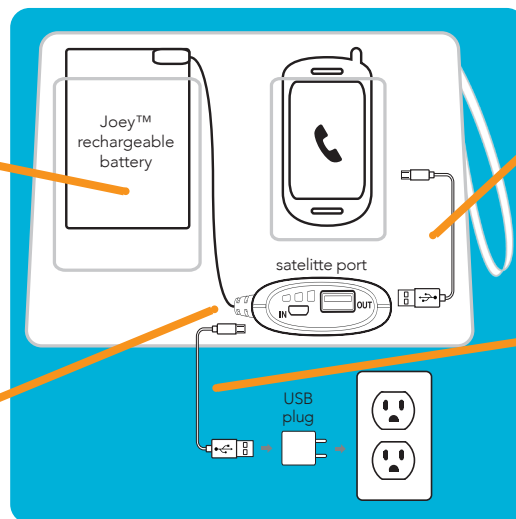
- This one cord connects the Joey™ to your device for charging and also connects the Joey™ to a USB power adapter when it's time to recharge the battery.
- Apple® recommends using their cords when charging their devices. No worries; all Apple® USB powered devices and cords are still compatible.



## How it works:

**The Joey™ battery** pack lives inside a pocket in the bag and is connected to a satellite port.

**The satellite port** includes a USB port ("OUT") and Micro-USB port ("IN") to charge your device and itself. It's compatible with any USB or Micro-USB device. LED lights indicate power level.



**Charge your phone.** Plug the USB (big) end of the cord into "OUT" port, and plug the Micro-USB (small) end into your phone. It's that easy!

**Charge the Joey™ battery.** Simply reverse the cord. Plug the Micro-USB (small) end into the "IN" port and the USB (big) end of the cord into a USB plug (or computer). 2 - 4 hours later, you're ready to go!

**\*COMPATIBLE WITH ALL USB & MICRO-USB DEVICES**



smart phones



MP3



tablets



bluetooth®



eReaders



games



printers



cameras

## Frequently asked questions...

**Can I charge my computer with the Joey™ battery?** No. If you plug your Joey™ battery into your computer, Joey will pull power from your computer & charge itself. The Joey™ is smart that way and a little selfish. Computers do not take their charge from USB hubs yet.

**Can I move the Joey™ battery to another bag?** Yes. We've created a great home for the Joey™ battery in our bags, but we understand that at times you may want to remove it. We've made the pockets flexible to accommodate removal, but keeping the Joey™ in its proper home will help avoid debris or liquids getting into its ports.