



# 2014 Annual Report

---

**The mission of** Wolf Haven International is to conserve and protect wolves and their habitat. We accomplish our mission through **providing sanctuary, offering education and promoting conservation.**

sanctuary

education

conservation

# 2014 Year at-a-glance

---

## Sanctuary

- Provided exceptional care, quality food and progressive medical treatment for the 50+ resident animals living at our American Sanctuary Association accredited sanctuary.
- Rescued and provided a lifetime home to six displaced animals: Aki, Hopa, Lexi, Senna, Shoka and Willow.
- Mexican gray wolf F1222 transferred here to be companion and breeding partner to M1067 as part of the Mexican wolf Species Survival Plan (SSP) program.
- Built four new holding areas and three den boxes for sanctuary wolves.
- Had DNA testing done on several animals living at Wolf Haven.



- Began application process for Global Federation of Animal Sanctuaries (GFAS) accreditation.
- Planted shrubs in wolf enclosures and erected visual barriers in front of red wolf SSP enclosures.



Photos from top (clockwise): One of three new den boxes built in 2014; corkscrew golden paintbrush growing on Wolf Haven's prairie; award-winning wildlife photographer featured in National Geographic magazine, Annie Musselman, with one of her Wolf Haven wolf photos; Director of Education, Erik Wilber (on screen) leads a remote classroom presentation.

## Education

- Hired an education intern to improve and enhance curriculum materials for educational presentations.
- Participated in REI Olympia conservation lecture series.
- Launched Spanish language presentation about wolves.
- Education presentations given to more than 3,000 school age children.
- Continued educational outreach presentations in Washington, Oregon, California and Arizona.
- Conducted 31 live Skype classes with students in 14 states, plus the countries of Mexico, the UK, South Korea, France and Canada (Ontario, Quebec, New Brunswick, Alberta).

## Conservation

- Hosted workshop for humane wildlife handling and chemical immobilization for wildlife professionals.
- Actively participated in Red wolf and Mexican wolf SSP meetings; invited to join management group of red wolf SSP program.
- Assisted in the capture/release of Mexican wolves in Sevilleta National Wildlife Refuge in New Mexico.
- Wolf Haven staff member Pamela Maciel Cabanas completed a USFWS internship in Arizona and New Mexico.
- Testified in support of wolves in the wild at public hearings in Arizona, New Mexico, North Carolina, California and Washington.

- Hosted and participated in “Predators on the landscape” public forum, collaborating with Cheetah Conservation Fund.

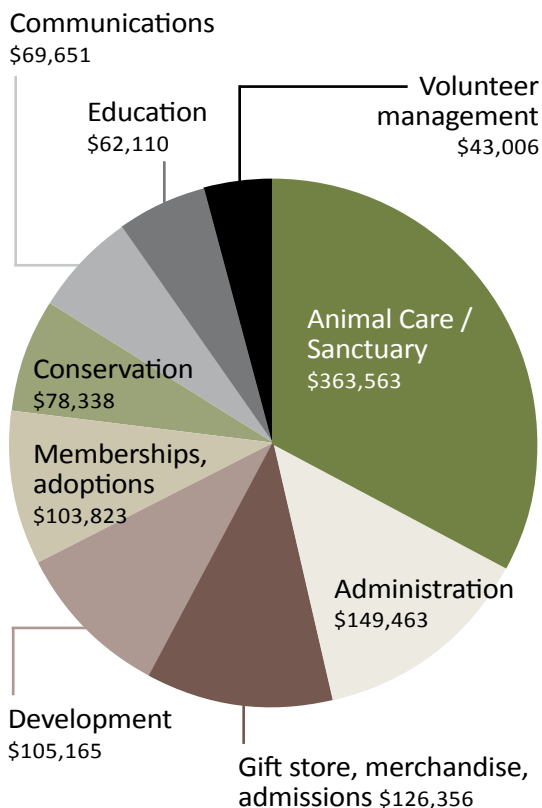
- Hired Anne Schuster as Prairie Conservation Specialist who created prairie outreach materials and bat interpretive signs.
- Washington wolf collaborative, Pacific Wolf Coalition, and WDFW Wolf Advisory Group participation.
- Successful establishment of endangered golden paintbrush, with over 2,970 flowering plants on our prairie.



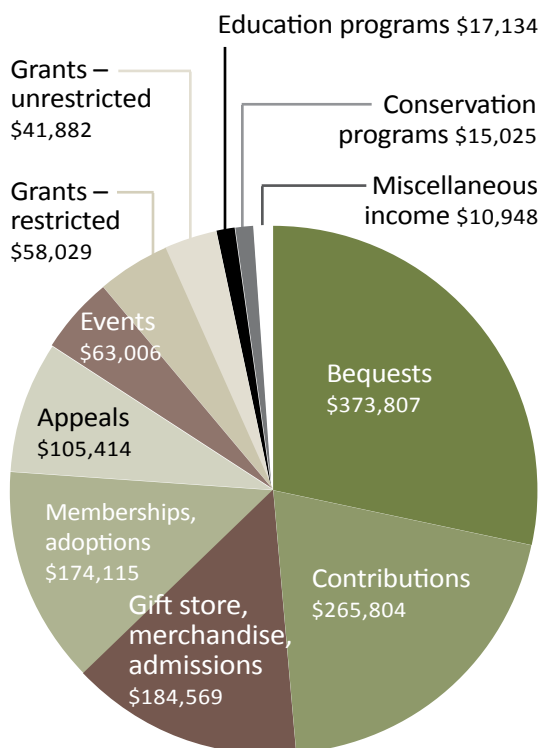
## Additional highlights

- Launched new website by 619 Graphic Design as part of Getty Images Grant awarded to photographer Annie Musselman.
- Hosted author Marybeth Holleman in public reading from her book Among Wolves.
- Selected by Comcast Cares as work site for volunteer employees and their families. Ninety volunteers painted, weeded, spread mulch and repaired fixtures.
- Café Vitta donated several high-end items, some proceeds from limited run of Mexican coffee (in honor of our participation in the Mexican wolf recovery program) and sponsored three resident wolves.

## 2014 Expenses • \$1,101,475



## 2014 Income • \$1,309,733



# Conserving and protecting wolves and their habitat

## Sanctuary

Almost 200 displaced, captive-born wolves have been rescued by Wolf Haven and given safe haven over the past thirty-three years. Many of the relocated wolves were privately owned; some came from zoos, tourist attractions and other environments. Most of the 50 animals in residence live in male/female pairs in vegetated enclosures located in a peaceful, wooded environment. Visitors to the sanctuary may see 10-12 resident animals while on a guided walk in the sanctuary. Our wolves are given exceptional care, quality food, a variety of enrichment items and progressive medical treatment. Wolf Haven is accredited by the American Sanctuary Association (ASA).

## Education

Our sanctuary and education department welcome 17,000 visitors annually, which includes more than 3,000 school age children. Wolf Haven delivers a variety of educational programs which focus not only on the wolf and its role in the wild but also curriculum designed to raise environmental awareness in people of all ages. Presentations are tailored for age group and

by specific topic. Guided walks, on and off-site classroom presentations, virtual online classes and community outreach are some of the methods we use to connect people to nature. Wolf Haven offers educational presentations in Washington, Oregon, California and New Mexico. Programs are available in both English and Spanish in Washington State.

## Conservation

Wolf Haven participates in two federally managed Species Survival Plan (SSP) programs for critically endangered wolves. Our sanctuary is a breeding facility for both the Mexican gray wolf and the red wolf (declared extinct in the wild in 1980). Wolf Haven is one of only three pre-release facilities in the U.S. for the highly endangered Mexican wolf. Wolf Haven has produced six litters of Mexican wolf pups and released two packs into the wild as part of a multi-agency, bi-national effort to restore Mexican gray wolves to the Southwest and Mexico. We advocate for wolves and interact closely with other organizations that share our vision of a fair, balanced and humane relationship with wolves and wildlife.

