

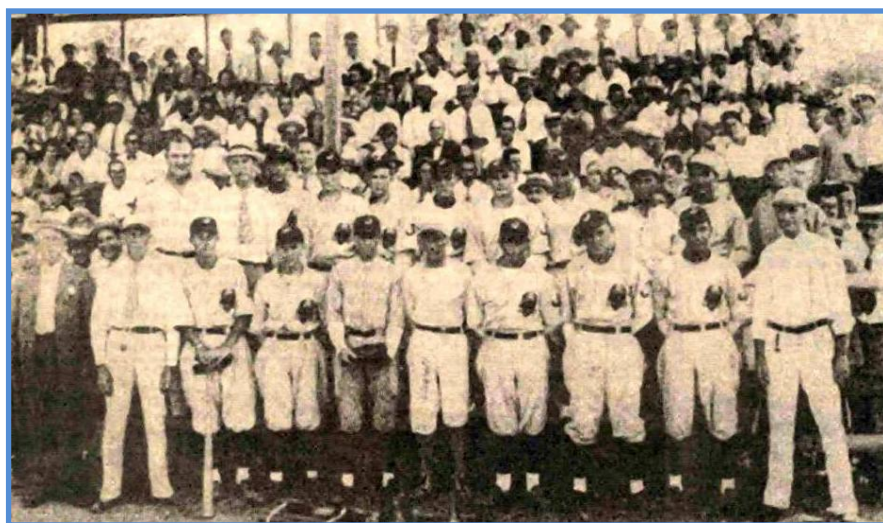
Evangeline League Baseball History

1930s to 1950s

6 p.m. Wednesday, March 9

Jeanerette Museum

500 E. Main St., Jeanerette



Dr. J. Paul Leslie of Nicholls University will lead a discussion of the history of the Evangeline League in rural Louisiana from the 1930s to 1950s. Teams included the Jeanerette Blues, New Iberia Cardinals, Abbeville Athletics and Houma Indians.

Over 60 players from the Evangeline League went on to play in the majors.

This program is free of charge and suitable for an adult audience

Seating may be limited and is taken on a first come, first serve basis. Doors open after 5 p.m.

For information visit www.jeanerettemuseum.com

Email jeanerettemuseum@yahoo.com or

Call 337-276-4408 Tuesday-Friday from 10 a.m. – 4 p.m.

This event is also sponsored by the Friends of Jeanerette Museum