

Trending Injuries / Fatalities

Total Crashes on Two-lane Section of Rural U.S. Hwy 98 Only

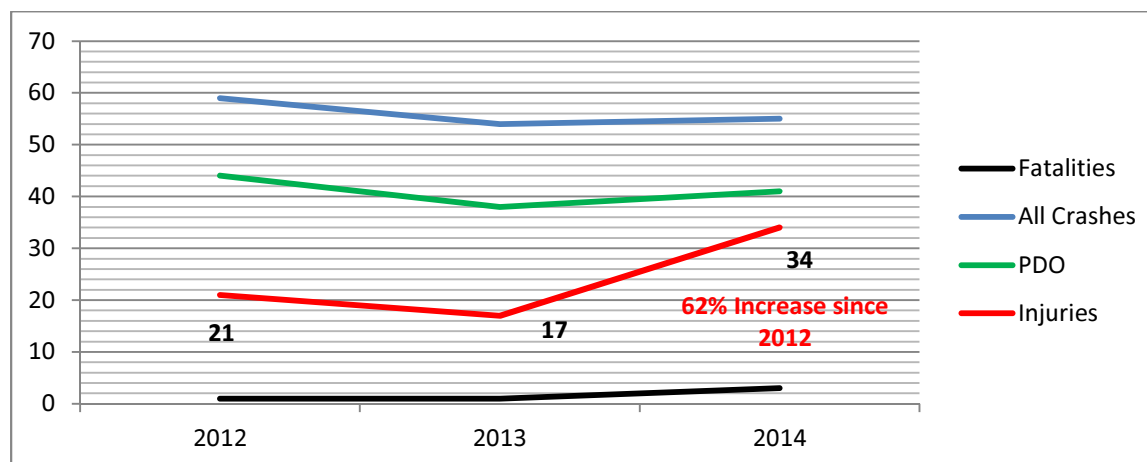
Snow Rd to Mississippi State Line

Prepared by Mobile County

Recent Years

2012	59 crashes - 44 PDO, 21 injuries, 1 fatal	37% result in injuries / fatality
2013	54 crashes - 38 PDO, 17 injuries, 1 fatal	33% results in injuries / fatality
2014	55 crashes - 41 PDO, 34 injuries, 3 fatal	67% results in injuries / fatalities

Note: PDO – Property Damage Only



Note: All Crashes on Rural Section U.S. Hwy 98, 2009 -2013 (Rural Section - Bear Fork Rd to Mississippi State Line in Mobile County): 1151 Crashes, 11 Fatalities, 256 Injuries, 884 PDO

Pedestrians

February 01, 2015 Wilmer man struck by vehicle, killed, troopers say

On February 01, 2015 at 3:34 PM

A pedestrian was killed Saturday morning after he was struck by a tractor-trailer, according to Alabama Law Enforcement Agency troopers. The crash happened around 4:50 a.m. on U.S. 98 about 15 miles west of Mobile. Wilbert Lee Moffett, 52-years-old and from Wilmer, was killed when he was struck by a 2009 Kenworth driven by 67-year-old Lindsey Craig Stockdale of Mobile, according to ALEA Trooper Curtis Summerville. Moffett was pronounced dead at the scene. Stockdale was not injured. ALEA troopers continue to investigate.

December 17, 2014 Pedestrian killed on U.S. 98 Tuesday night after entering roadway

On December 17, 2014 at 9:34 AM Alabama State Troopers are continuing to investigate a crash that claimed the life of a pedestrian on Tuesday night, per officials. Harold Conn Baker III, 46, was killed at on U.S. 98 six miles west of Mobile. He was entering the roadway and was struck by a 1998 Toyota Tacoma at approximately 7:30 p.m., according to Trooper Kevin Cook. West of Schillinger Rd. intersection.

Fiery Crash

February 15, 2014 Three killed, one injured in Highway 98 crash

The fiery crash that happened on the bridge, over Big Creek Lake claimed three lives: 69-year-old Robert Albritton Jr., his grandson, 15-year-old Brandon Albritton, and the driver of another vehicle, 17-year-old Brady Hoffman. The accident happened 11 o'clock Saturday night. Highway 98 has lived up to its nickname once again. "Bloody 98. We've lost a lot of friends and now family on this road and it's extremely dangerous," Howey said. *While driving to Big Creek Lake, I came upon another accident on Highway 98. A van and truck was involved. Two people in the van were taken to the hospital with injuries. "I did see the van roll about five or seven times. "We just can't make sense of why the hold up is and we are losing all these lives on this road and nothing's being done about it," Howey said.*

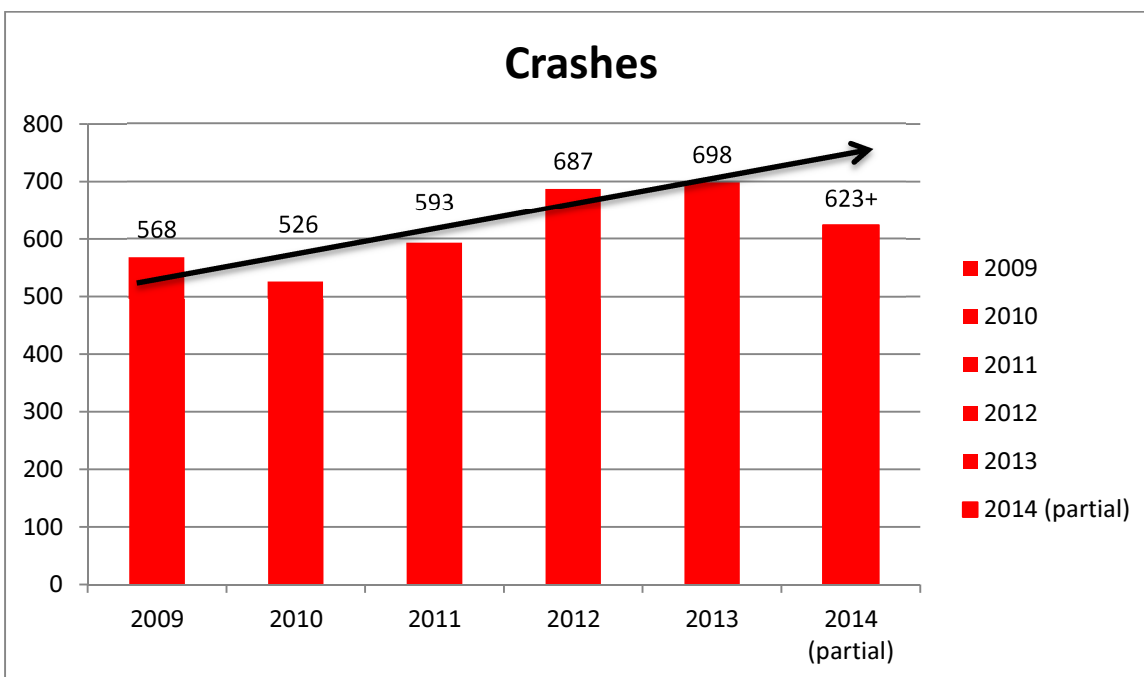
ALDOT RELEASE

November 5, 2009

ALDOT RESPONDS TO SAFETY CONCERNS BY FUNDING EXTRA TROOPER PATROLS ON U.S. 98

MONTGOMERY – Responding to citizen concerns expressed through community groups, the Alabama Department of Transportation will begin funding state trooper overtime patrols Nov. 7 to "Take Back Highway 98." Members of ALDOT's Highway 98 Community Outreach Group and the Wilmer Community Action Group have expressed concerns about growing congestion, speeding and reckless driving on Highway 98 in West Mobile County. **In response to those concerns, ALDOT will use highway safety funds for extra trooper patrols along the two-lane section of Highway 98 from the Mississippi state line to Snow Road in an effort to reduce dangerous and illegal driving practices.** The initial overtime enforcement effort will run for one week, but beefed-up patrols using ALDOT safety funds will be conducted at random. This initiative is similar to others ALDOT has funded across Alabama to keep Alabama's highways safer. Highway 98 has already seen occasional increased enforcement efforts, but this new safety campaign is in direct response to resident concerns and will be backed by the resources of ALDOT and the highway patrol division of the Alabama Department of Public Safety. "Local residents recently expressed concerns about the number of speeders, crashes and amount of traffic on the current two-lane section of Highway 98," said ALDOT Ninth Division Engineer Vince Calametti. "Residents in the Wilmer area are troubled by speeders and those who illegally use turn lanes to pass slower moving vehicles. Hopefully these enforcement efforts will address local concerns until we can complete the new four-lane divided highway project that will realign the existing Highway 98." Safety concerns are justified, Calametti said. **Since 1995, there have been 2,157 crashes resulting in 1,038 injuries and 50 fatalities.** "A four-lane divided highway like what will be provided by our new Highway 98 will take a lot of traffic off existing 98 and provide safer conditions because of the extra capacity and a wide median," Calametti said. In addition to increased trooper patrols, variable message boards will be placed on either end of the route to alert drivers to expect strict enforcement of traffic laws.

All Crashes on all U.S. Hwy 98 in Mobile County.



2009 to 2013, 4.2% average increase in crashes per year!

Crash Rate Comparisons per VMT

(Crashes per Million Vehicle Mile Traveled)

All Crashes on Rural Section U.S. Hwy 98

Rural Section - Bear Fork Rd to Mississippi State Line in Mobile County.

