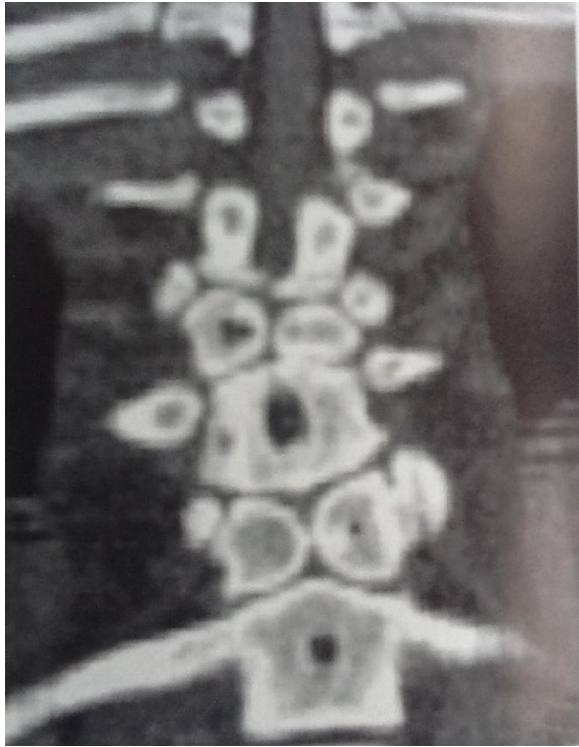
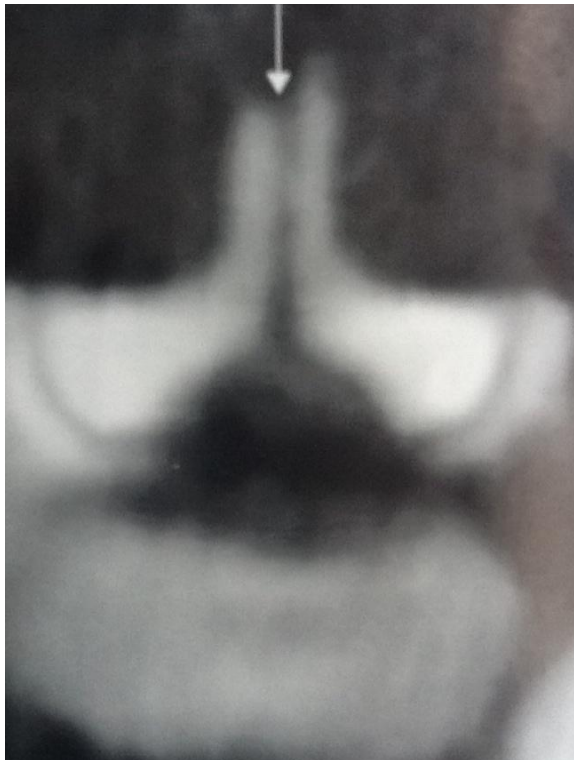


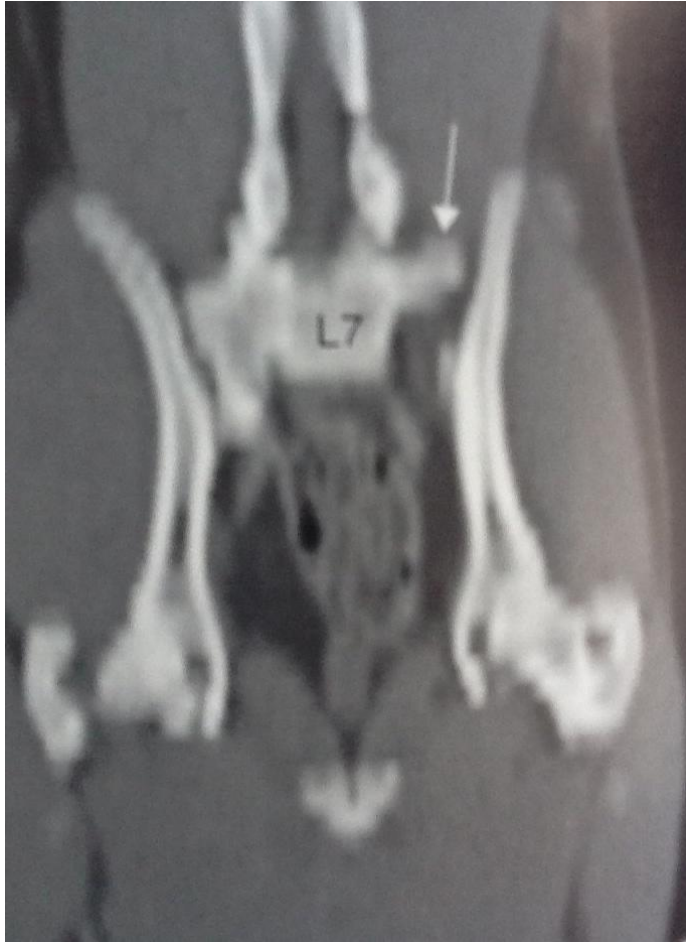
Three different dogs with vertebral malformations.



(A) Dorsal reconstruction CT image of a young dog shows multiple butterfly vertebrae.



(B) Transverse CT image of a young dog with spinal bifida shows a split of the dorsal vertebral spinous process and spinal arch (arrow).



(C) Dorsal reconstructed CT image of an adult dog with a transitional lumbosacral vertebrae shows L7 forming a transverse process on the left (arrow), whereas the right side articulates with the ilium, forming a second "sacral wing". An incidental finding is unilateral hip dysplasia with secondary OA in the left hip (arrow side of the pelvis) and an opposite normal right hip.