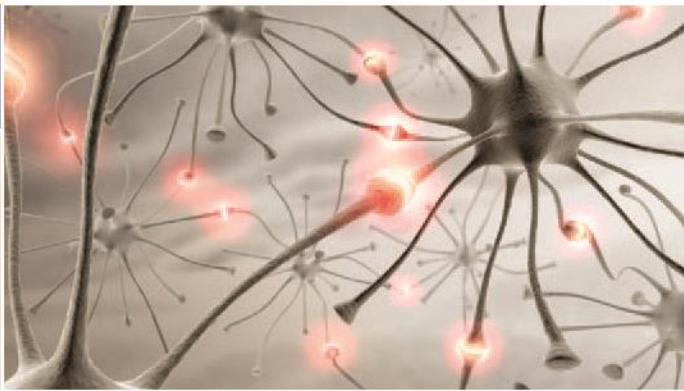


NIMH Division of Intramural Research Programs (DIRP)

Research Studies

for children & adults

at the NIH Clinical Center in Bethesda, MD



contact

Kalene DeHaut, MSW
301-594-3188
Kalene.dehaut@nih.gov
<http://patientinfo.nimh.nih.gov>



National Institute
of Mental Health

Who are we?

The **internal research division** of NIMH
NIH Campus- Bethesda, MD

What do we do?

We conduct:

basic, clinical, and translational research
Bench-to-Bedside

We conduct:

state-of-the-art research that complements
extramural research activities and utilizes
the special resources of the NIH

We conduct:

Inpatient & Outpatient research studies
Nationwide recruitment

Areas of Research

- ✓ Aging and Alzheimer Disease
- ✓ Attention & Conduct Disorders
- ✓ Autism
- ✓ Bipolar Disorders
- ✓ Treatment Resistant Depression
- ✓ Anxiety Disorders
- ✓ Parkinson's Disease & Movement Disorders
- ✓ Schizophrenia
- ✓ Epidemiology
- ✓ Experimental Therapeutics
- ✓ Cell Biology
- ✓ Cognitive Neuroscience
- ✓ Functional and Molecular Imaging
- ✓ Ion Channels, Neurotransmitter Receptors
- ✓ Molecular Signaling
- ✓ Neural Development and Plasticity
- ✓ Neuroendocrinology
- ✓ Neurogenetics
- ✓ Neuroimmunology and Virology
- ✓ Stroke and Ischemia
- ✓ Systems and Integrative Neuroscience
- ✓ Behavioral Neuroscience

Why?

Research is our best hope for understanding & treating mental illnesses.

*Why do people **choose to participate** in our research?*

Thanks to volunteers, researchers are learning more about the causes of mental disorders, and are finding new ways to treat and prevent illnesses.



Who can **participate** in a study?

What does it **cost** to participate?

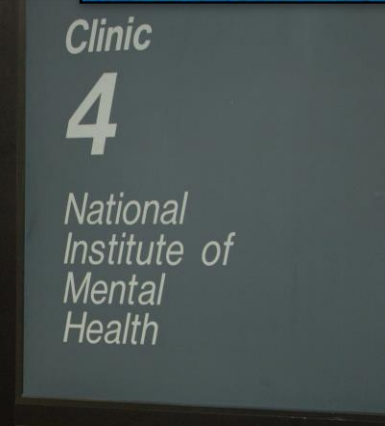
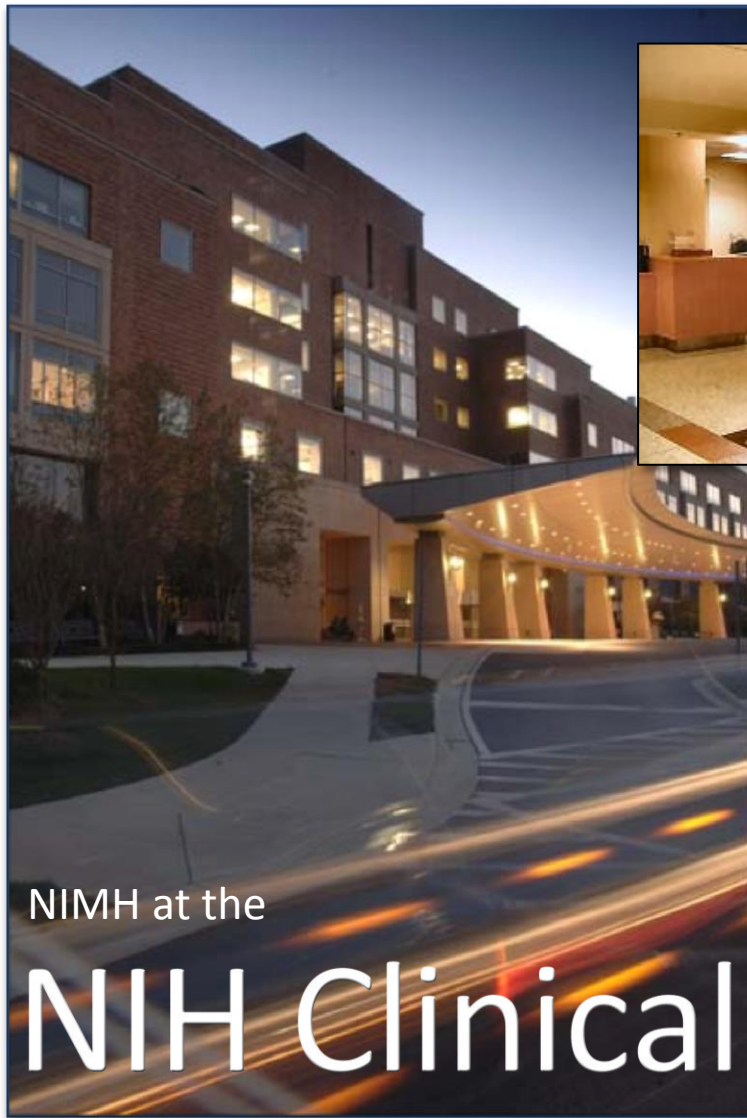
What is the **time commitment**?

What if I do **not live close** to NIH?

Is there **compensations**?



Where are the studies conducted?



Center
bethesda, md



What are participants' **rights**?

- + Before you enroll in a study, all volunteers are told the details of the study, including risks and benefits, during an **informed consent process**
- + Institutional Review Board (IRB)
- + Human Subjects Protection Unit
- + All participants have the right to withdraw from research at anytime



How does a person **enroll** in a study?

- ✓ Call NIMH
- ✓ Learn Study Details
- ✓ Be Evaluated for Eligibility
- ✓ Consent to Participate

How do we recruit participants for studies? General Principles & Tips

How can you help?

IRP Research Resources

- The Update
- IRP study brochures and flyers
- Research results and articles
- <http://patientinfo.nimh.nih.gov/>
- Call me!

Research Study Promotion

Disseminate our study information through:

- Newsletters
- Websites
- LISTSERVs
- Blogs
- Social Media (Twitter, Facebook, Youtube)
- Events
- Educational and scientific talks provided by IRP researchers



Other Research Resources

Finding research studies:

<http://patientinfo.nimh.nih.gov/> IRP Studies

<http://www.nimh.nih.gov/trials/index.shtml> All NIMH funded studies

<http://clinicaltrials.gov/> Federally and privately funded clinical trials for all disease

<https://www.researchmatch.org/> Free and secure web-based service that helps connect volunteers to clinical studies taking place at the NIH Clinical Center and at other major academic institutions across the country

<http://clinicalcenter.nih.gov/recruit/volunteers.html> Healthy Volunteers

Other resources about participating in research:

[A Participant's Guide to Mental Health Clinical Research](#) Publication

[Neuroimaging and Mental Illness: A Window Into the Brain](#) Publication

<http://clinicalcenter.nih.gov/kidsinresearch/index.html> Resource Page