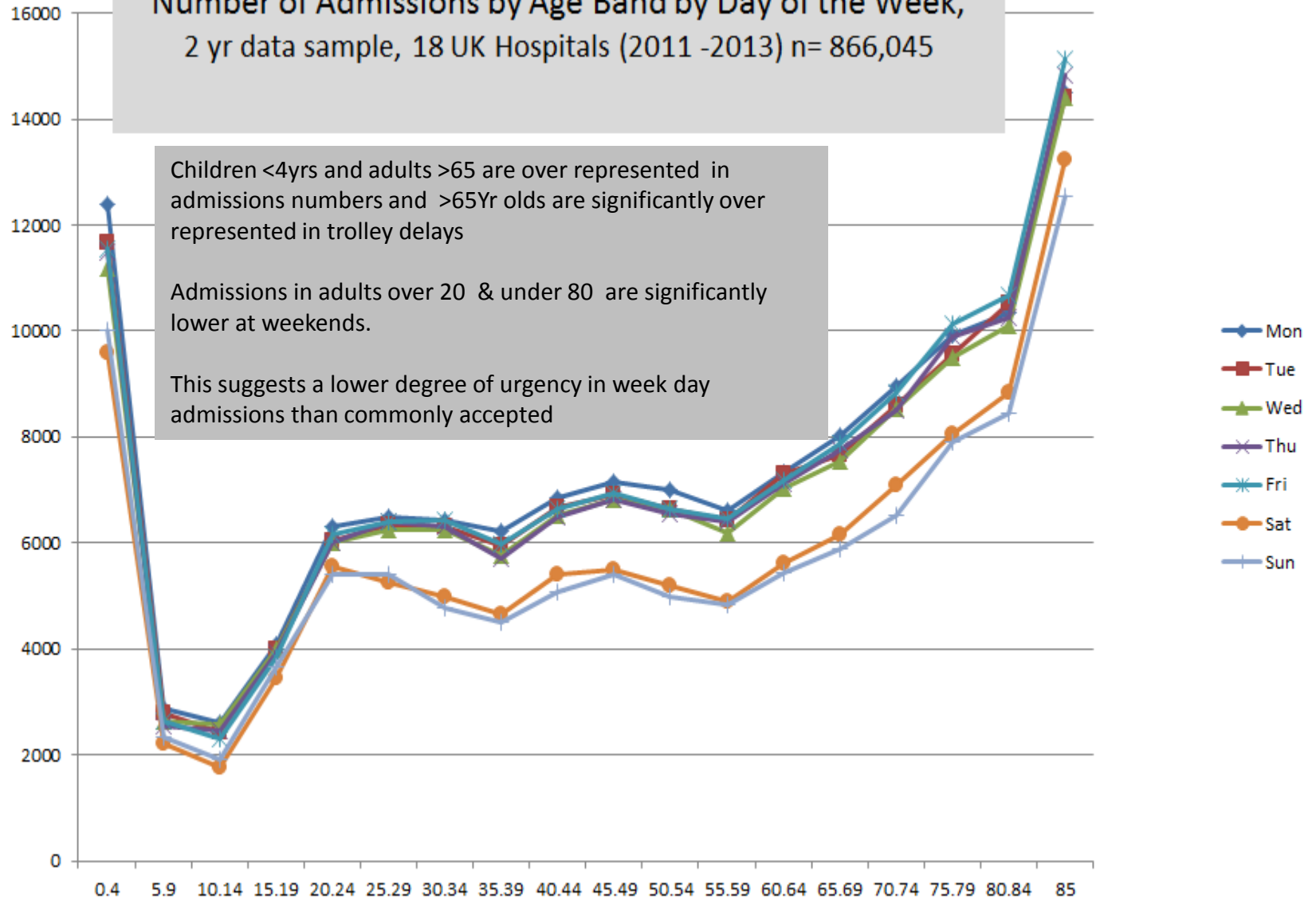


How does day of the week or
time of the day affect flow ?

Number of Admissions by Age Band by Day of the Week, 2 yr data sample, 18 UK Hospitals (2011 -2013) n= 866,045



Average LoS by ageband by admission day of week

12.00

Hospitals	Trusts	Data period
18	15	2 calendar years 10-11 to 12-13
Admissions	Bed Days	Mean Los
866045	4441706	5.128724258

10.00

8.00

6.00

4.00

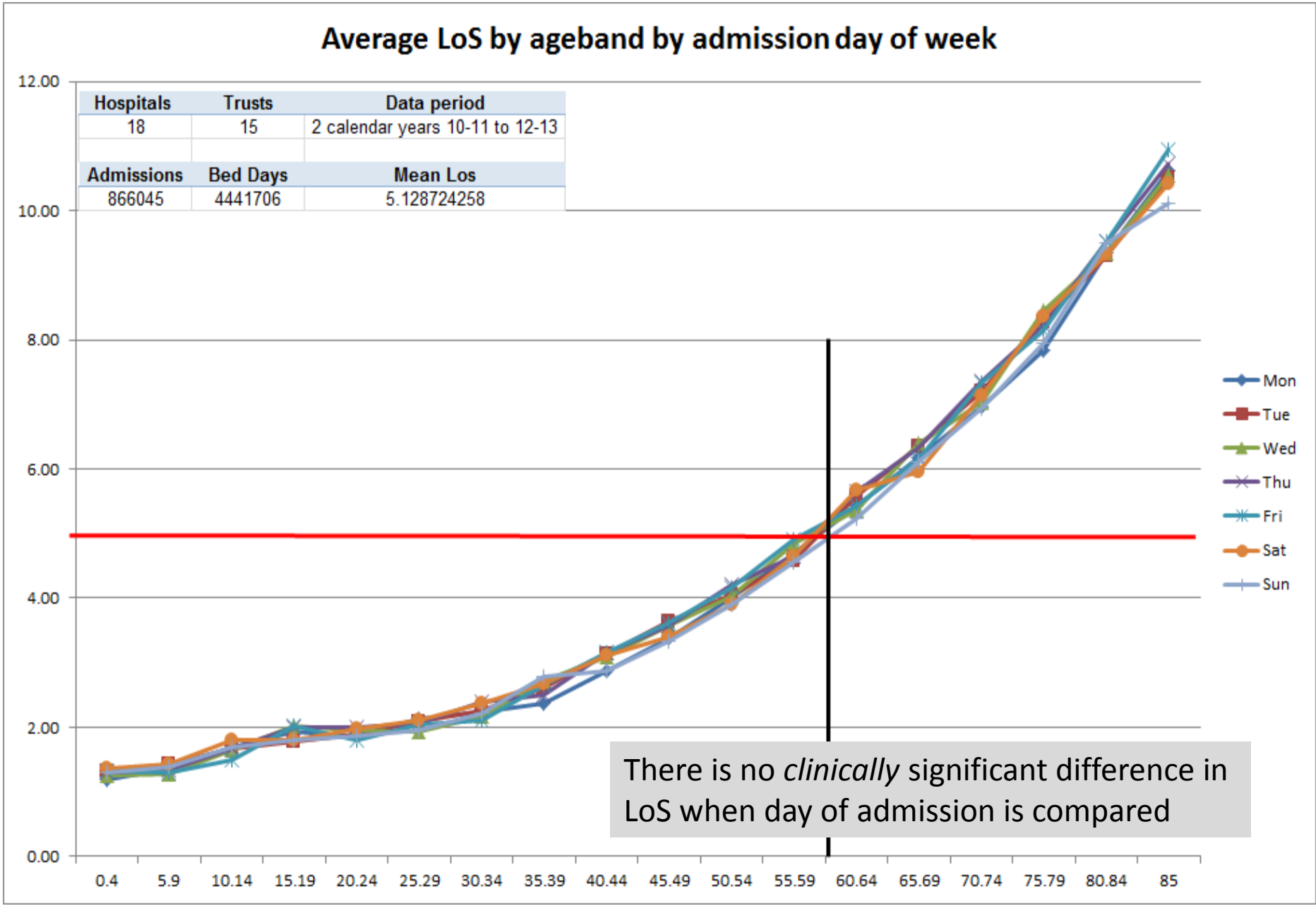
2.00

0.00

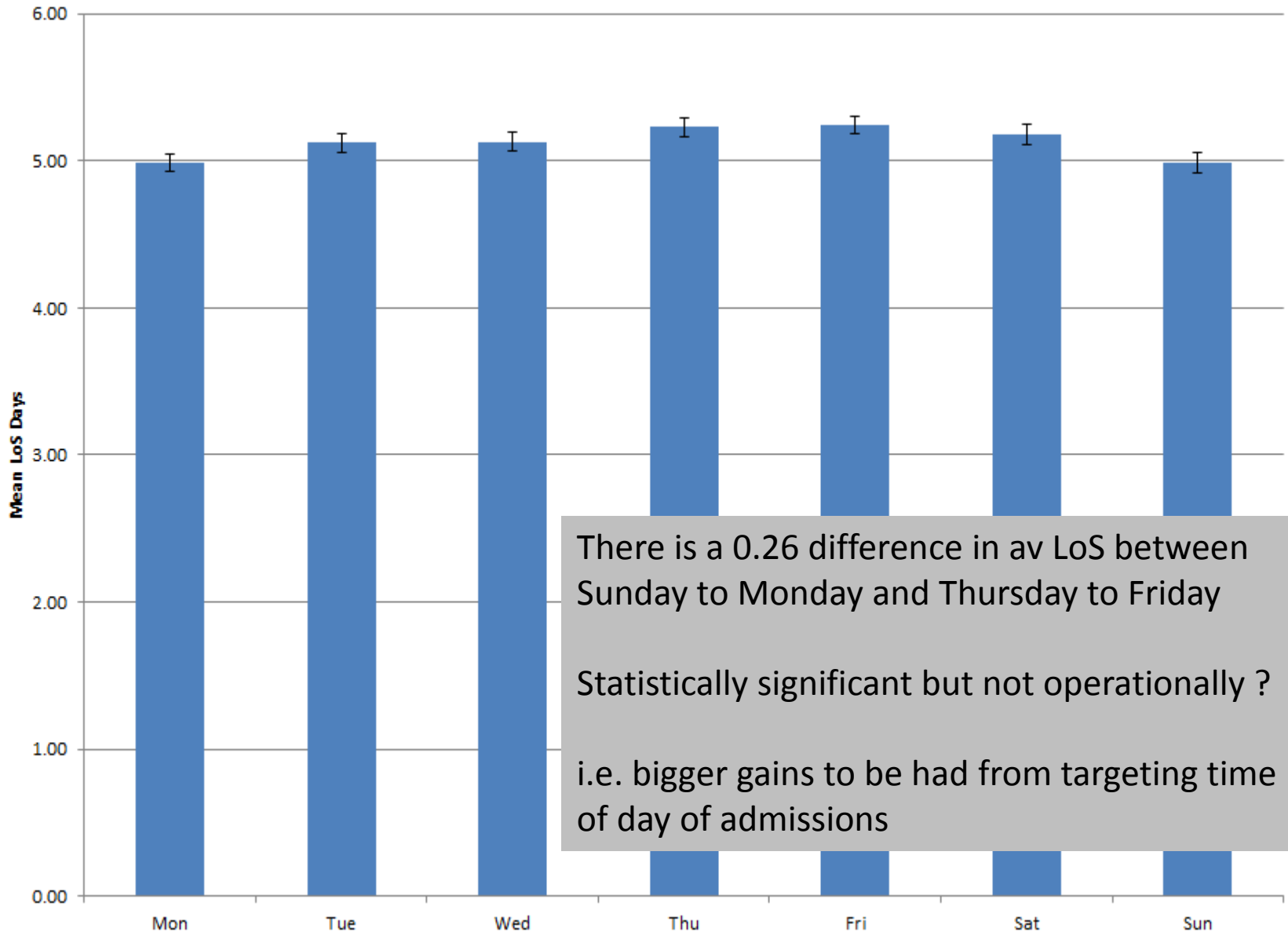
- Mon
- Tue
- Wed
- Thu
- Fri
- Sat
- Sun

0.4 5.9 10.14 15.19 20.24 25.29 30.34 35.39 40.44 45.49 50.54 55.59 60.64 65.69 70.74 75.79 80.84 85

There is no *clinically* significant difference in LoS when day of admission is compared

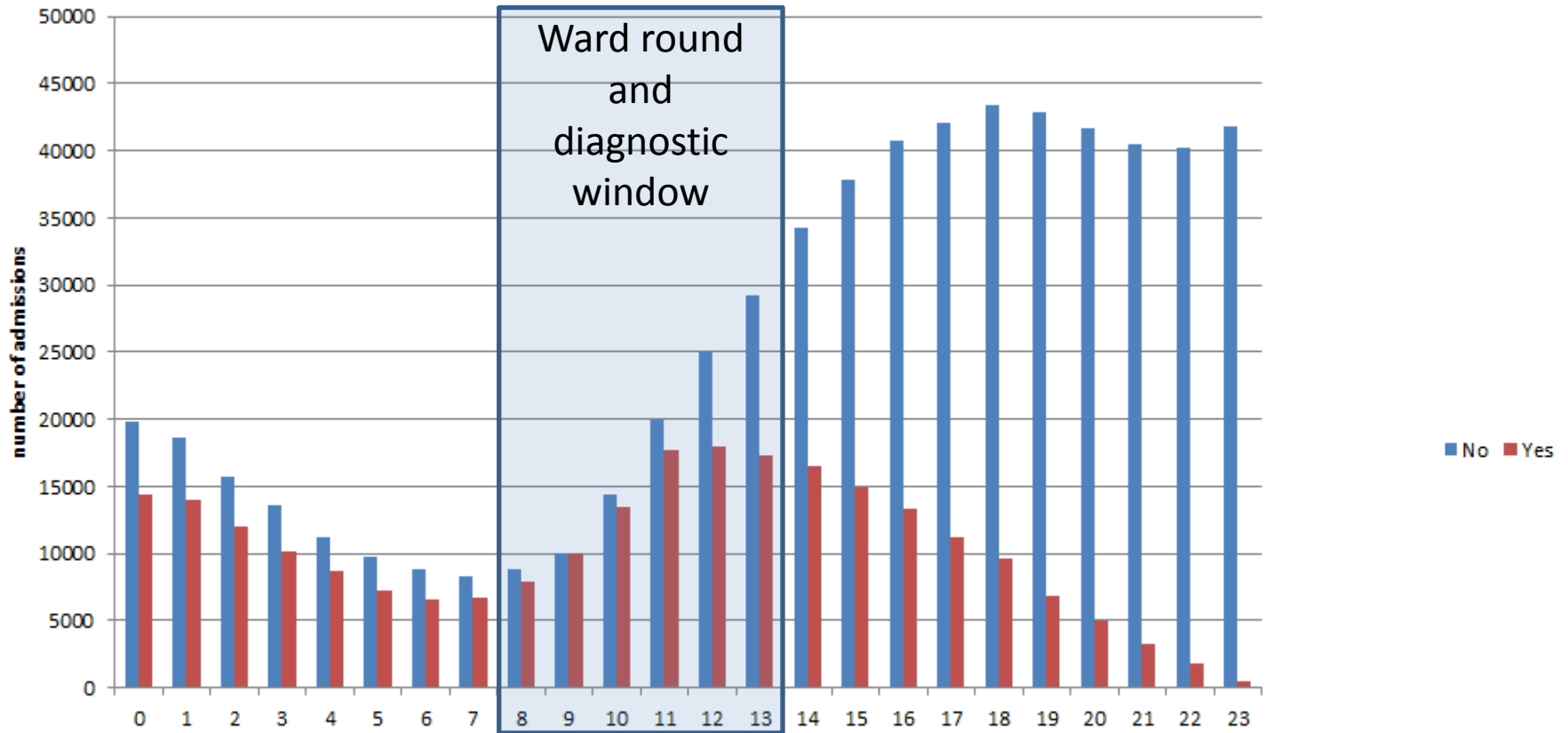


Average Length of Stay by admission day with 95% confidence intervals (n=866045)



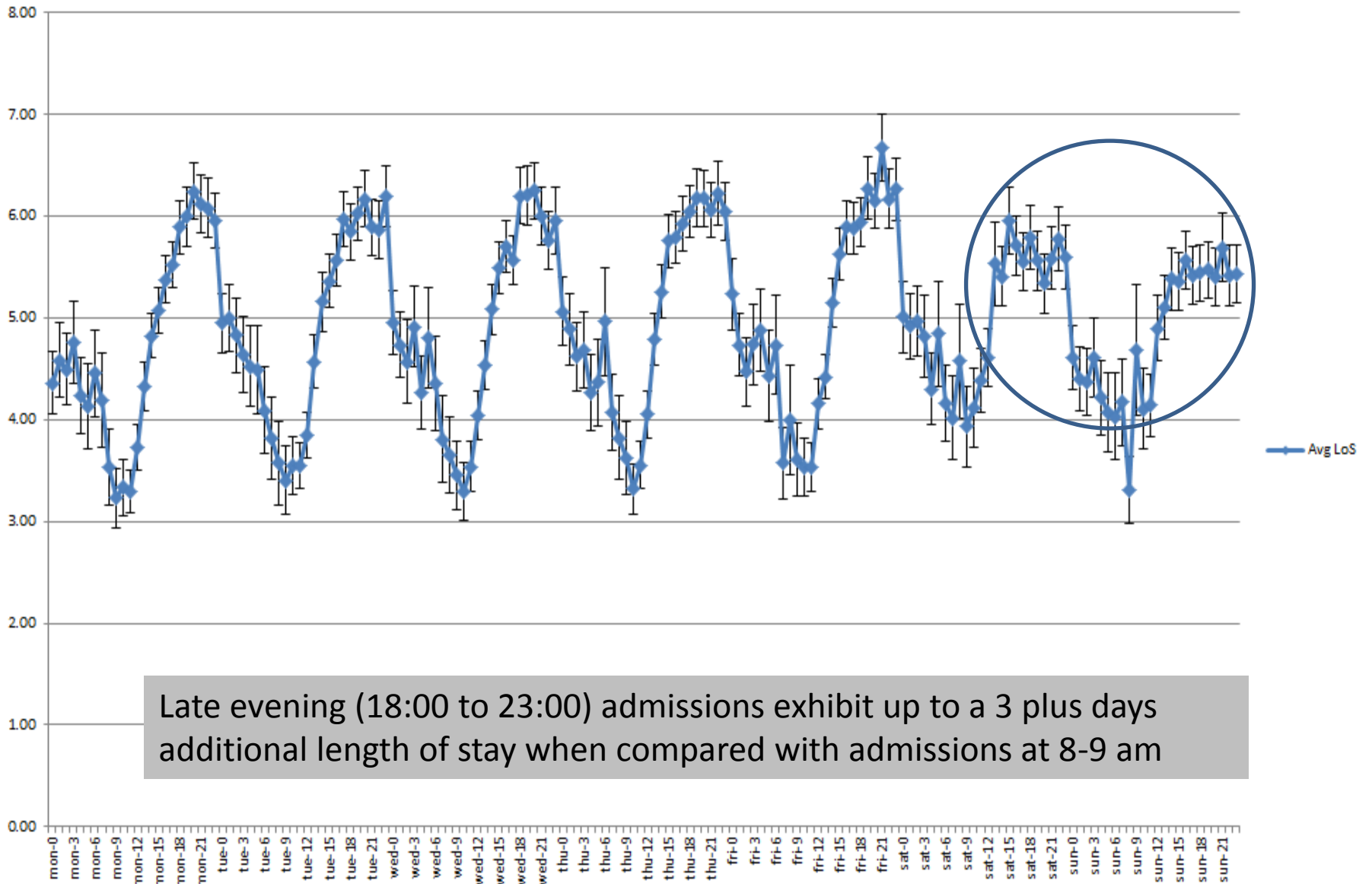
Zero day LoS compared with >0 day LoS, 2011-12 & 2012-13.

n= 866, 045



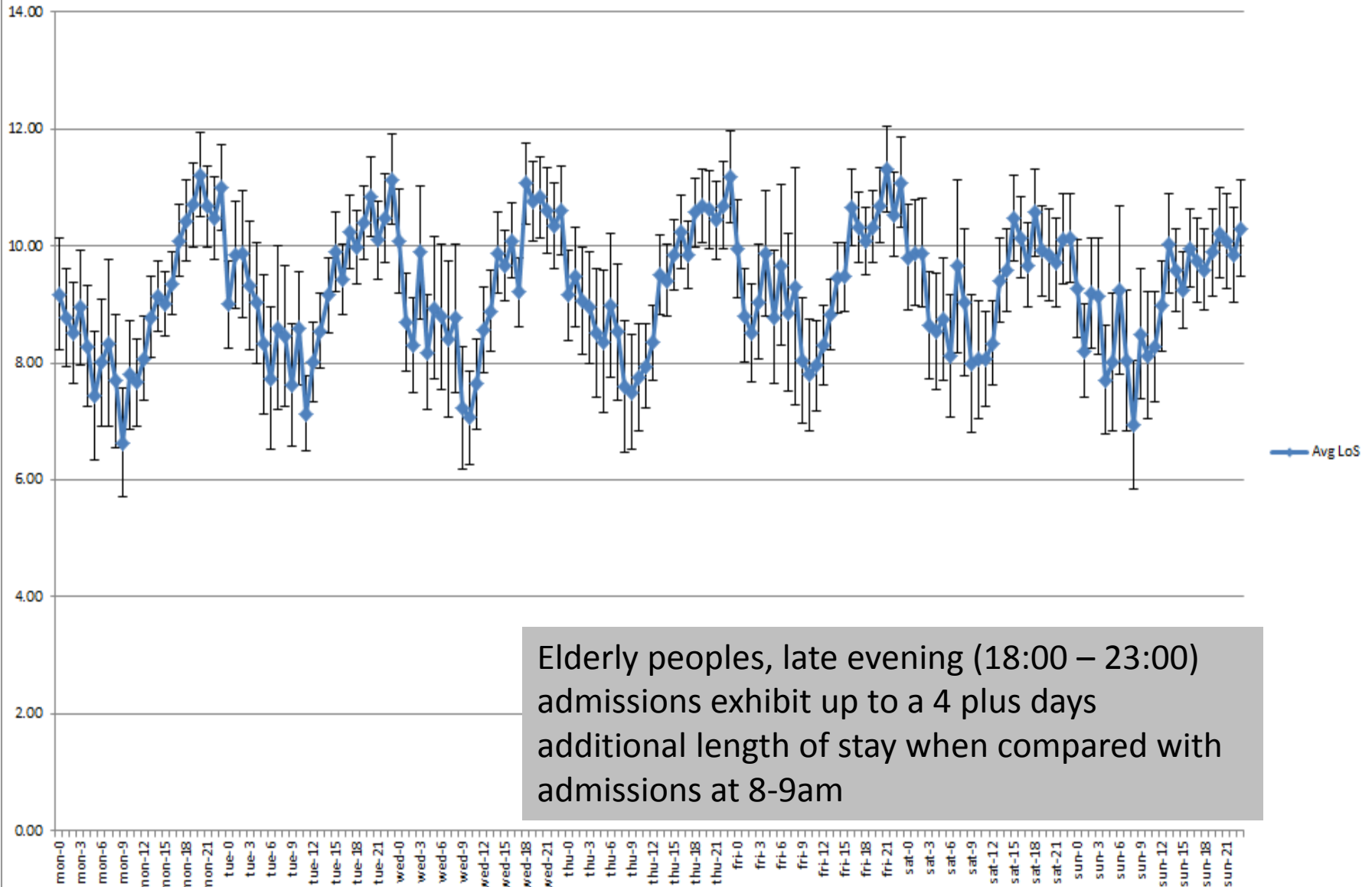
The ability to “turnaround” patients before midnight (zero day LoS) is greatest for 9-10 am admissions with late evening potential depreciating rapidly

All Ages: Average Length of Stay by admissions day and hour with 95% confidence intervals (n=866045)



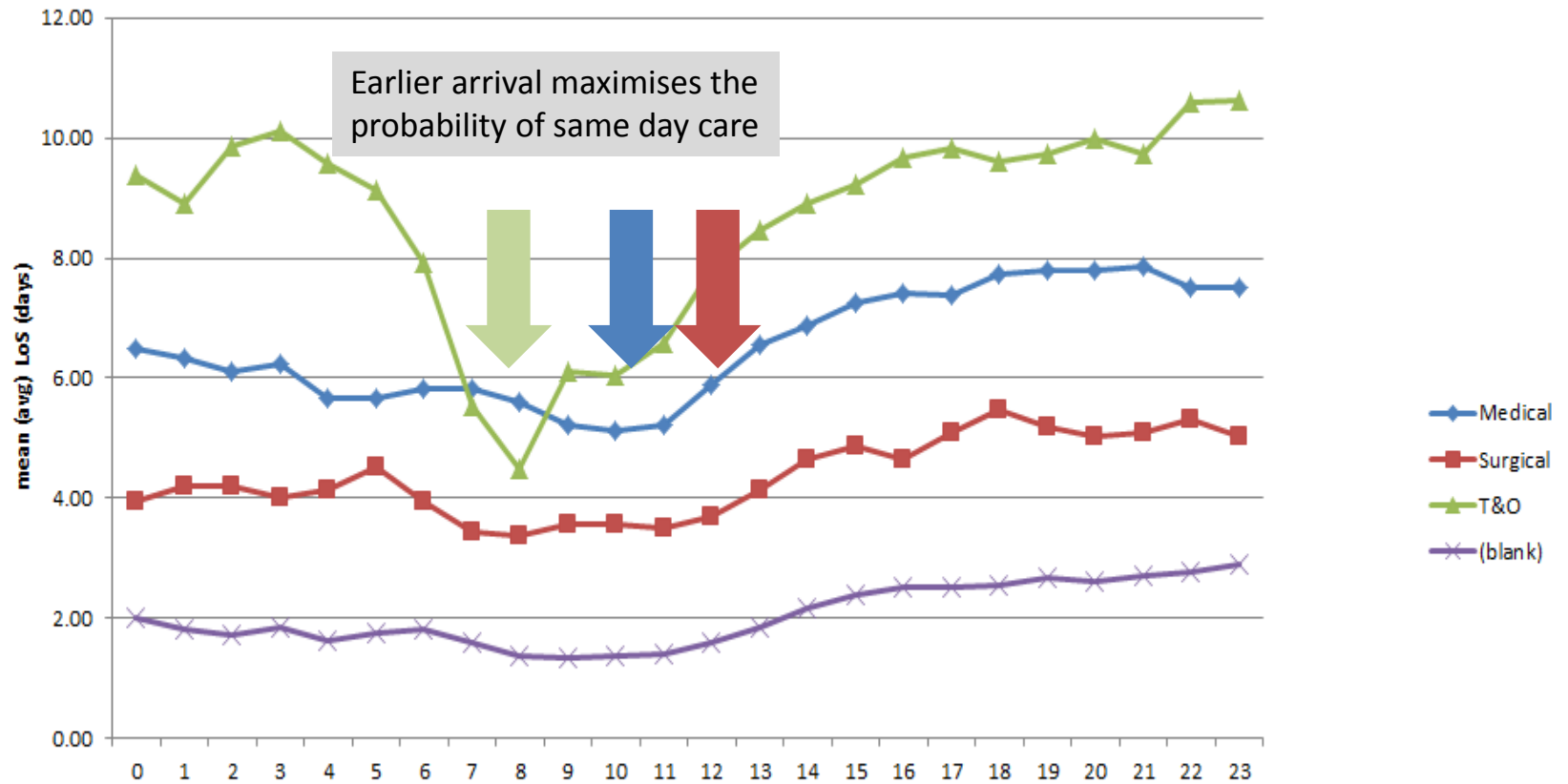
Late evening (18:00 to 23:00) admissions exhibit up to a 3 plus days additional length of stay when compared with admissions at 8-9 am

75s and over: Average Length of Stay by admissions day and hour with 95% confidence intervals (n=233206)



Elderly peoples, late evening (18:00 – 23:00) admissions exhibit up to a 4 plus days additional length of stay when compared with admissions at 8-9am

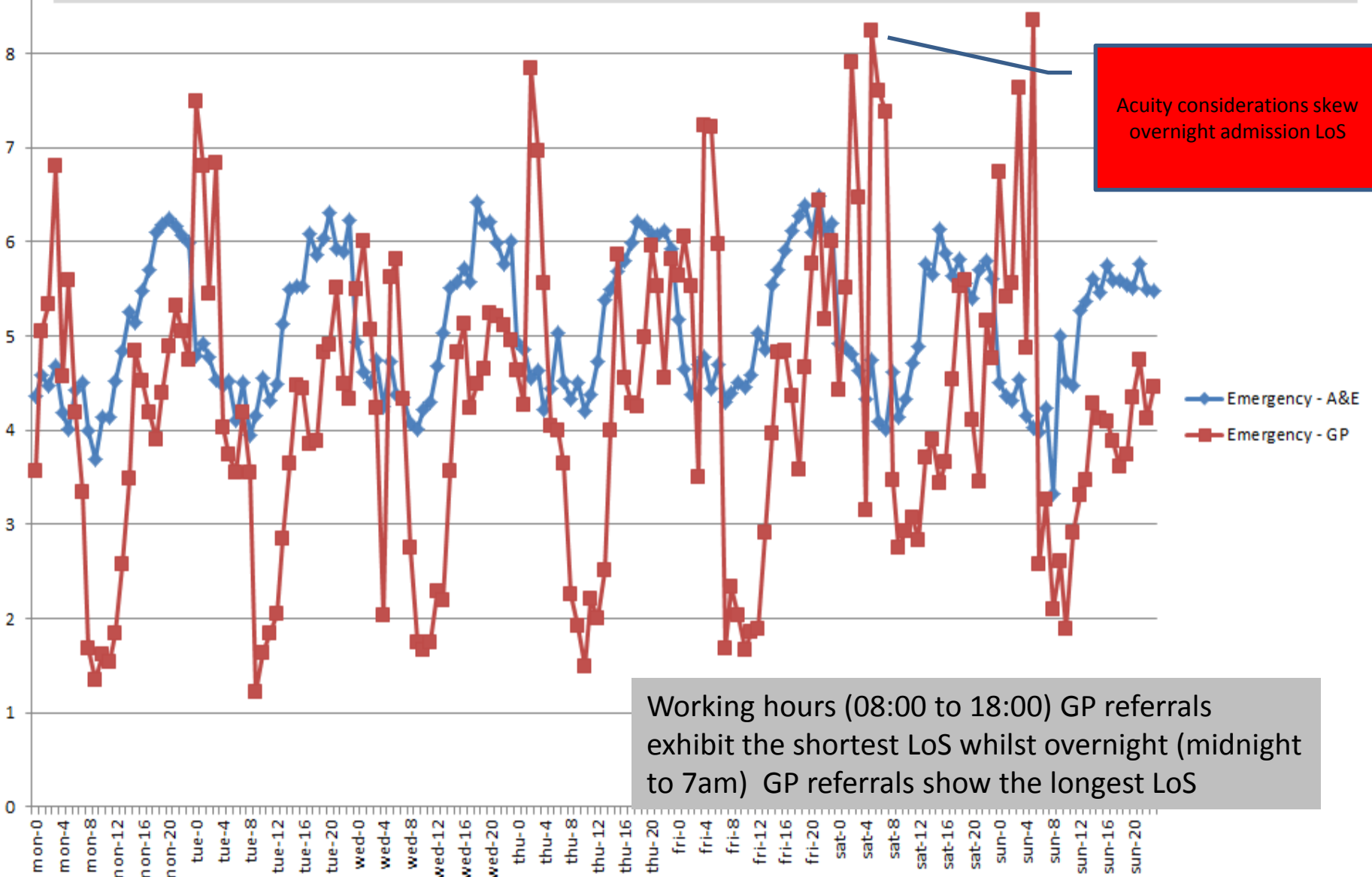
Admission LoS by group and by hour of day, 2011-12 & 2012-13. n= 866, 045



Earlier arrival maximises the probability of same day care

Admission LoS additional days are influenced by speciality working practices and patient type

LoS Comparison, Admissions V ED compared with GP initiated emergency admissions, 10-11 to 12-13.

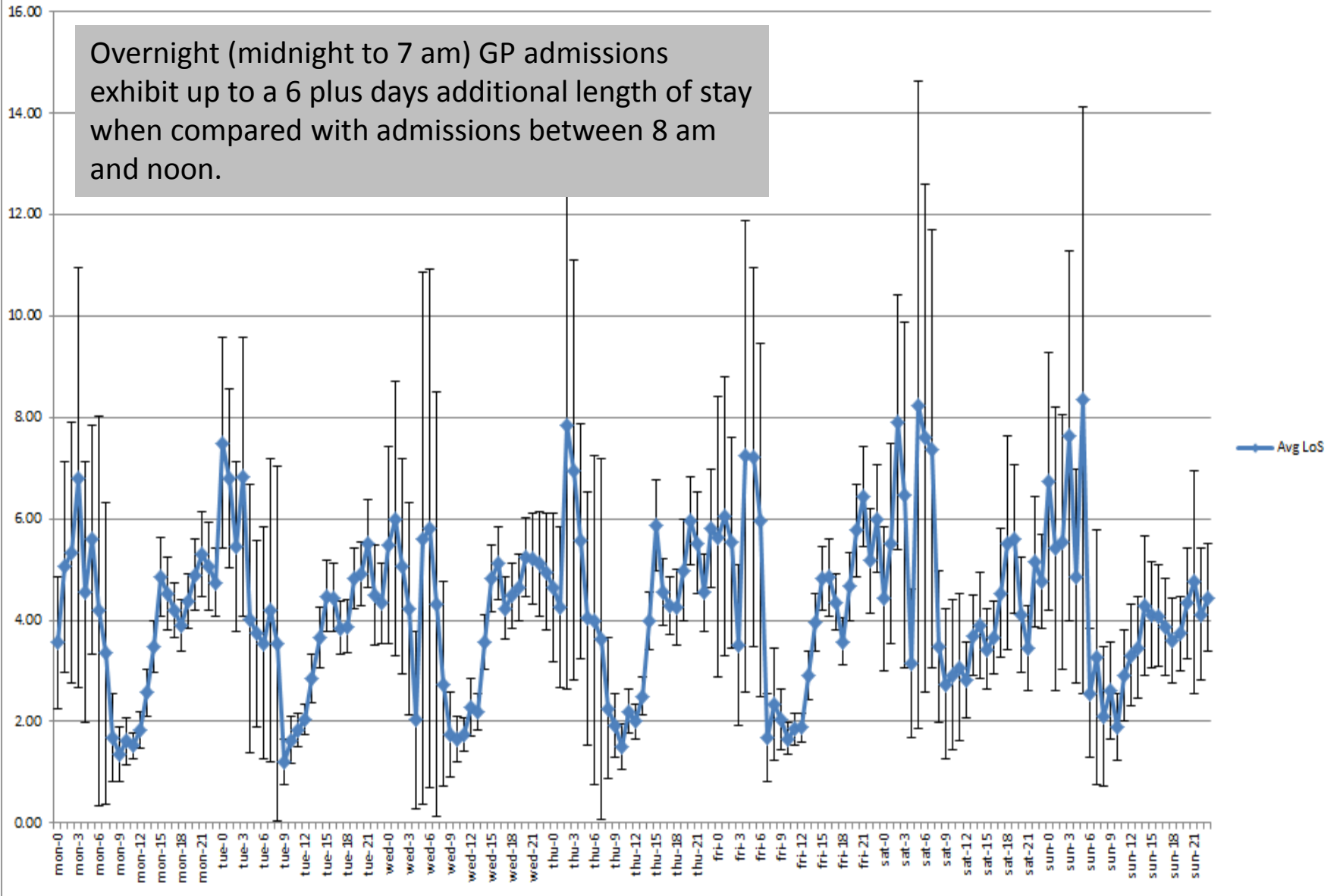


Acuity considerations skew overnight admission LoS

Working hours (08:00 to 18:00) GP referrals exhibit the shortest LoS whilst overnight (midnight to 7am) GP referrals show the longest LoS

All Ages: GP Referrals Average Length of Stay by admissions day and hour with 95% confidence intervals (n=76168)

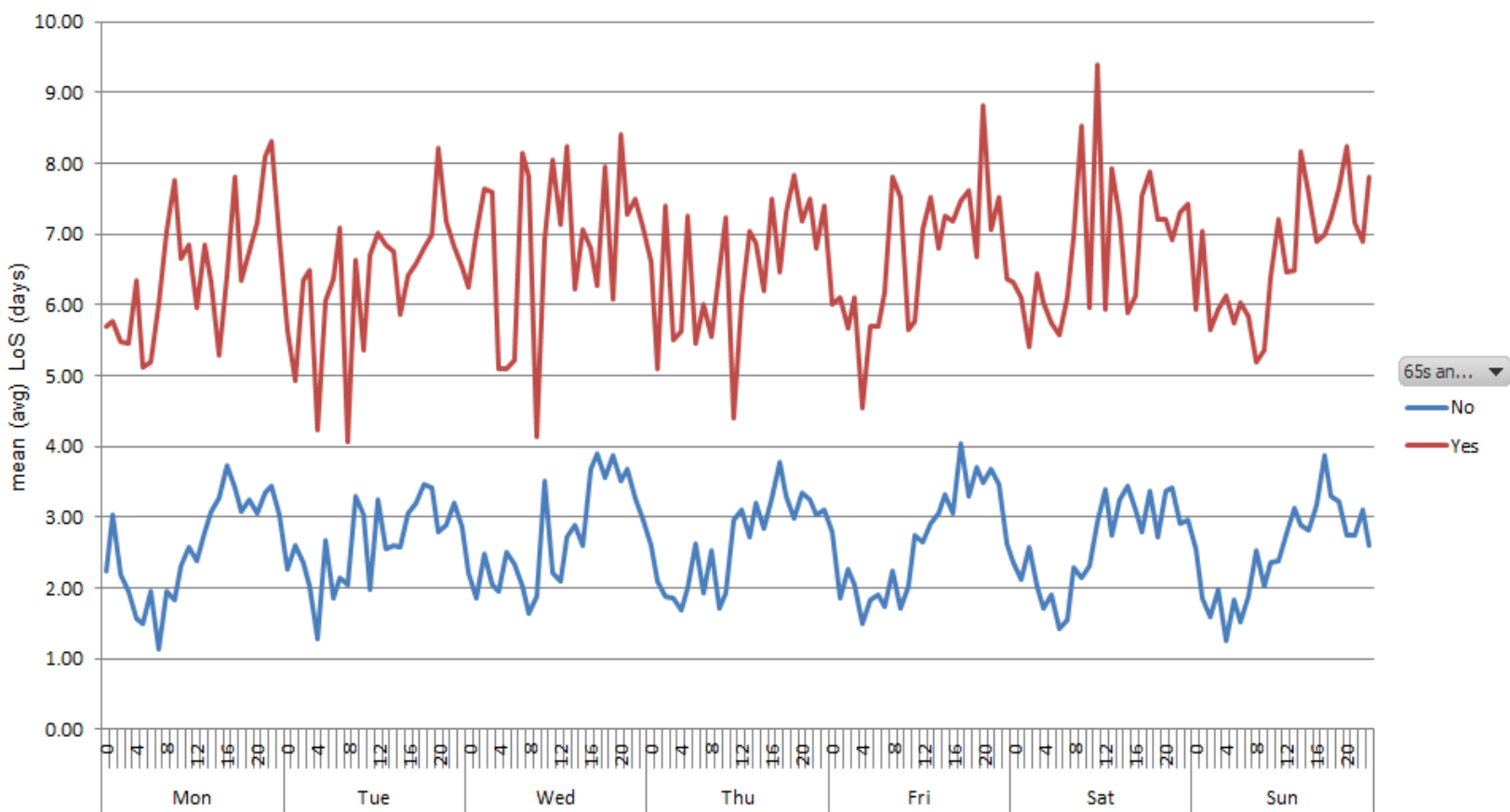
Overnight (midnight to 7 am) GP admissions exhibit up to a 6 plus days additional length of stay when compared with admissions between 8 am and noon.



Non-Elective Ad... ↕

Avg Los (...)

Average LOS by Admission Day and Hour, a NI Hospital, (n=46,083) 11-12 & 12-13.



65s an... ▼

No
Yes

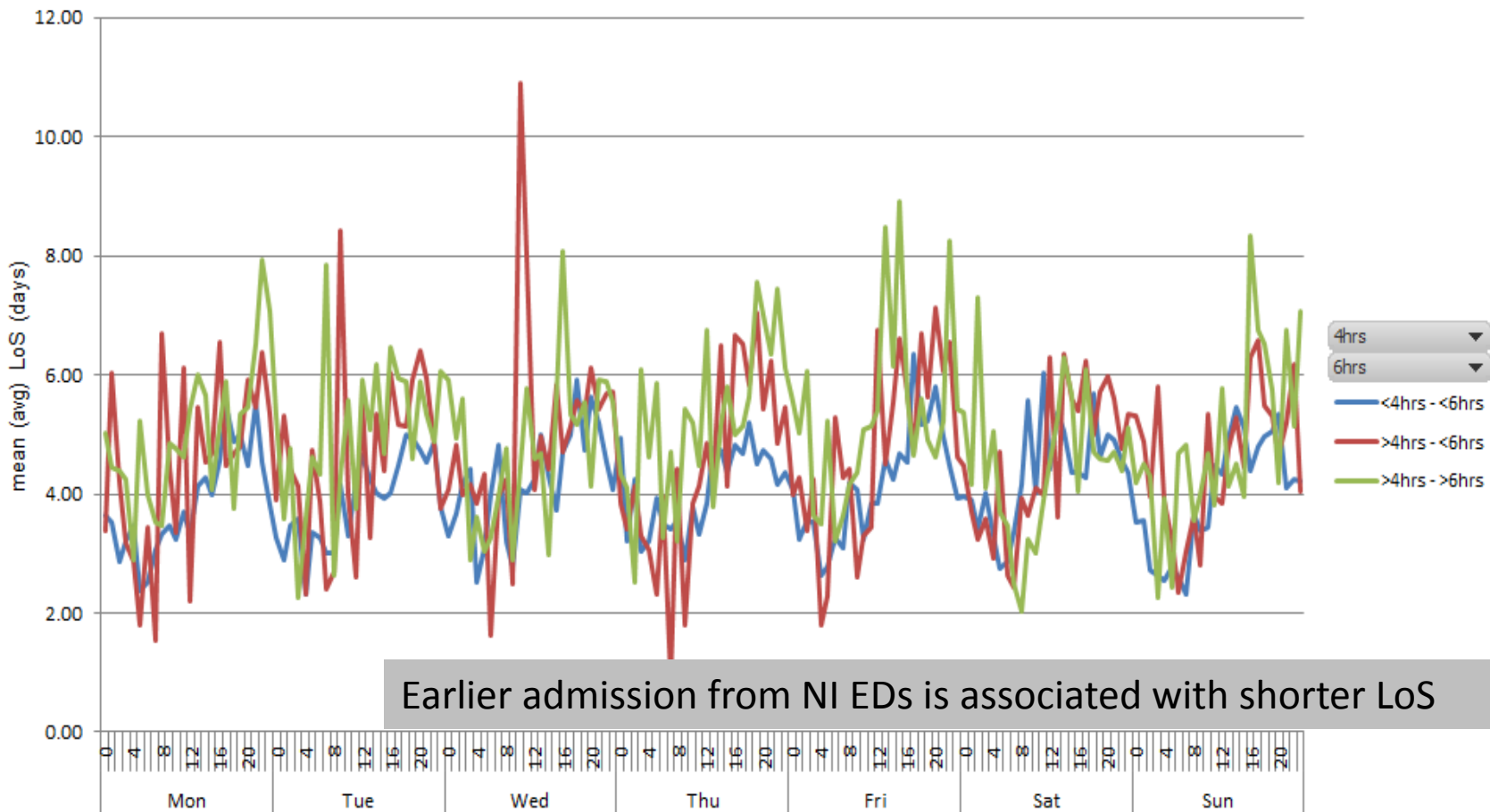
Arriv... ▼

HourofAd... ▼

Non-Elective Ad... ▾

Avg Los (...)

Average LOS by time spent in ED (<4 hrs, >4hrs, >6 hrs) a NI Hospital, (n=46,083) 11-12 &12-13.



Arriv... ▾ HourofAd... ▾