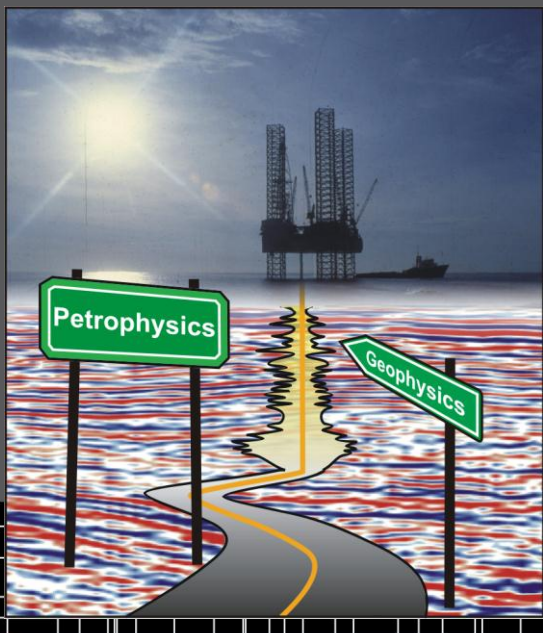




SPWLA 2013 FALL TOPICAL CONFERENCE ANNOUNCEMENT



SEISMIC PETROPHYSICS – Unlocking the value of integration

Taos, New Mexico

October 27th to October 30th, 2013

It's a truism that Geophysics, Petrophysics and Rock Physics have a lot in common. Whichever of the three you identify with, you share subject matter with the other two. And yet we frequently see disconnects and incompatibilities in our workflows and practices. Quantitative interpretation of seismic data for reservoir and fluid properties requires careful integration of core data, well logs, production profiles and other information. As the industry moves towards increasingly demanding exploration and production scenarios, for example unconventional and difficult conventional plays, and uses time-lapse seismic for secondary and tertiary recovery, the need for quantitative integration of petrophysics into geophysical workflows becomes even more important. The challenge is to do this with data sets of variable quality, from vertical and deviated wells, while working with the concepts of elasticity, anisotropy, and the scale differences between petrophysical and seismic data. This is essential for successful integration, but not yet part of every petrophysicist's stock in trade.

This is a forum for exploring the common ground between petrophysics and geophysics, and establishing and disseminating best practices for maximizing the information derived from seismic data.

Delegates will leave the conference familiar with the industry's best practices in "seismic petrophysics", and ready to contribute to further development of prioritized technology.

POTENTIAL TOPICS:

- ✓ Core, log, and geological information
- ✓ From data to rock property models
- ✓ Computer modeling and simulation
- ✓ Scaling and uncertainties
- ✓ From seismic to reservoir properties
- ✓ 4D modeling
- ✓ Reservoir characterization, Unconventional
- ✓ Reservoir characterization, Conventional
- ✓ Integrated case studies

Go to www.spwla.org for updated information

CO-CHAIRS:

Ronny Hofmann, Shell

Chris Skelt, Chevron

Tad Smith, Apache

STEERING COMMITTEE:

Ivana Bunting, Chevron

Arthur Cheng, Halliburton

Ezequiel Gonzalez, Shell

Mark Kittridge, Hess

Doug Patterson, Baker-Hughes

Manika Prasad, Colorado School of Mines

Colin Sayers, Schlumberger

Kyle Spikes, University of Texas

Carlos Torres-Verdin, University of Texas

SPWLA VP OF EDUCATION

Brett Wendt, ConocoPhillips



SPWLA Topical Conference Application

October 27 – 30, 2013, Taos, New Mexico, USA

Application deadline: **Tuesday, October 1, 2013**

SEISMIC PETROPHYSICS – Unlocking the value of integration

SPWLA Topical Conferences are designed to encourage communication amongst peers in our industry. A formal presentation is not required for acceptance to attend; we encourage you to consider a topic you wish to share at the conference. Priority will be given to applicants based on the strength of their submissions.

Our Policy

It is the policy of this organization to provide equal opportunities without regard to race, color, religion, national origin, gender, sexual preference, age, or disability.

Conference attendance will be limited to sixty-four people. Preference will be given to applicants who are willing to present at this topical conference.

Proceedings are “off the record” to encourage sharing of the latest techniques and information.

Thank you for completing this application form and for your interest in the Seismic Petrophysics-Unlocking the value of integration Topical Conference.

Completed application must be received by close of business on Tuesday, October 1, 2013.

Member Delegate Fee: \$1800.00 (All-inclusive package, No exceptions will be allowed)

Non-Member Delegate Fee: \$1875.00 (All-inclusive package, No exceptions will be allowed)

Registration includes:

- Registration fee
- Sunday evening Social
- Hotel sleeping rooms Sunday-Wednesday nights
- Monday night dinner
- Tuesday evening Breakout Session with Cocktails and hors' d oeuvres
- Monday-Wednesday breakfast and lunch
- Custom order shirt
- Internet service in your sleeping room

Spouse Fee: \$180.00 (Food and Beverage)

APPLICATION LINK:

<http://events.constantcontact.com/register/event?llr=yhp94ocab&oeidk=a07e7t2969mab642b3a>