

## The Study

Pathophysiology and  
Treatment of Bipolar  
Disorder as Assessed by  
*in vivo* Imaging

- We are looking for adults between the ages of 18 and 65 who have bipolar disorder and are currently depressed.
- The study provides treatment for bipolar disorder with either lithium or lamotrigine, depending on your needs.
- This study uses brain scans to learn more about bipolar disorder.

*Learning more about  
bipolar disorder will help us  
to improve treatment.*

IRB Approved: 07/16/2013  
Expiration Date: 07/10/2014  
CORIHS, Stony Brook University

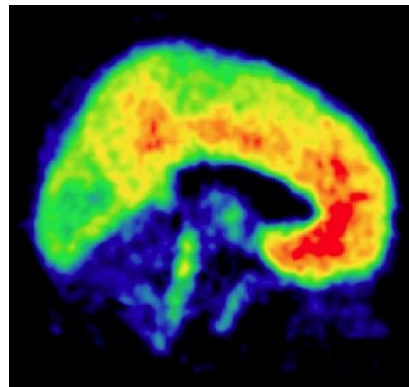
## How to Participate

To determine if you are eligible, you will first be asked a few questions on the phone.

You will also be interviewed in person and have a physical exam to make sure it is safe for you to participate.

If you are interested, please call our study coordinator at

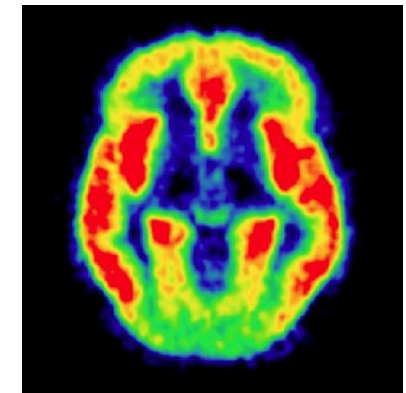
(631) 638-2053



Stony Brook **Medicine**

Bipolar and  
Still Depressed?  
Volunteers Needed  
for a  
Brain Imaging  
Research Study

Stony Brook University  
Medical Center  
Yale University



## Your Participation

- You will have 1 MRI scan at Stony Brook University and 4 PET scans at Yale University
- The MRI scan and first 2 PET scans will take place before beginning medication treatment.
- After these initial scans you will begin treatment with lithium or lamotrigine.
- After approximately 2-3 months of medication treatment, you will have 2 repeat PET scans.
- Throughout the study you will be interviewed about your physical and emotional health.

## Benefits and Payment

- You will be given \$450 for completing the study.
- You will receive up to 6 months of free outpatient treatment.
- You will receive 1 month of free medication.

## Brain Imaging Research at Stony Brook University

The Department of Psychiatry and Behavioral Science at Stony Brook University is one of the region's premier providers of psychiatric services and is fast becoming a national leader in neuroimaging research.

A new team of brain imaging researchers at Stony Brook, led by department Chair Ramin Parsey MD, PhD, has brought many of the most advanced techniques for image acquisition and analysis to Long Island.

## Directions

Suite 040, Floor T10,  
Health Sciences Center  
Stony Brook Medicine  
101 Nicolls Rd., Stony Brook, NY  
11794

## Driving:

- Take the Long Island Expressway to Exit 62: Nicolls Road North (towards Stony Brook).
- Drive North on Nicolls Rd for about 9 miles.
- Turn right at the first Stony Brook sign onto Health Sciences Drive.
- Follow the signs for Visitor Parking, located near the front of the hospital.

## On Site:

- Enter the hospital through the main entrance.
- Walk across the lobby to the Health Sciences Center hallway.
- Pass the cafeteria on your left and the hospital elevators on your right. Do NOT take the hospital elevators.
- Take this hallway until you reach the HSC elevators.
- Take the elevator to floor T10.
- Enter the double doors in the hallway labeled 040 - 054.