



Partner Release Announcement SPEECHCONTROL (PDCC)

Version 3.7 Build 370



Dear SPS partner,

We are pleased to announce the release of the new SpeechControl (PDCC) 3.7 software.

This release includes following improvements and changes:

- Support for the new SpeechMike Premium 'Touch' devices
- Display of new Foot control images
- Support for additional Dragon NaturallySpeaking editions
- Display of warning messages if a legacy device is detected

This document provides the commercial information to the release of this software product.

With kind regards,

Wolfgang Spannlang
Senior Product Manager
Speech Processing Solutions

SPEECH
PROCESSING
SOLUTIONS

Table of contents

HIGHLIGHTS	3
Support for SpeechMike Premium Touch	3
Display of new Foot control images	3
Warning message for legacy devices	3
IT REQUIREMENTS	4
DRAGON NATURALLYSPEAKING	4
AVAILABILITY	4
LOGISTIC INFORMATION	4

HIGHLIGHTS

SUPPORT FOR SPEECHMIKE PREMIUM TOUCH



SpeechControl 3.7 enables users to configure and to run firmware upgrades of their SpeechMike Premium Touch.

It includes new images in the device view when a SpeechMike Premium Touch connected and selected.

Since the new SpeechMike devices include a touch sensor instead of a trackball the 'Trackball' settings have been renamed to 'Pointer' settings.

DISPLAY OF NEW FOOT CONTROL IMAGES



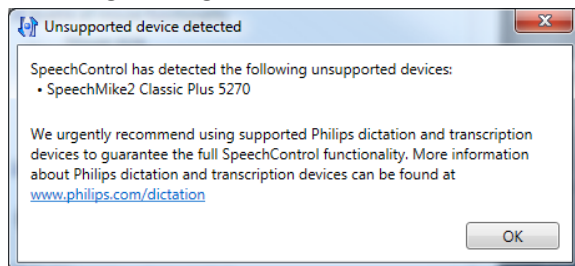
When a Philips USB foot control is connected and selected from the device list, the device view will display the corresponding image for the new ACC2300 series foot control.

However the predecessor LFH2300 series foot controls can still be configured.

WARNING MESSAGE FOR LEGACY DEVICES



When a legacy device like a SpeechMike 2 is detected SpeechControl will display the following message:



The warning will be shown for the following devices:

- SpeechMike2 Classic 5260
- SpeechMike2 Classic 5262
- SpeechMike2 Classic Plus 5270
- SpeechMike2 Classic Plus 5272
- SpeechMike2 Pro 5274
- SpeechMike2 Pro Plus 5276
- SpeechMike2 Barcode 5280
- SpeechMike2 Barcode 5282
- SpeechMike2 Barcode 5284
- Digital Pocket Memo 9500
- Digital Pocket Memo 9520
- Digital Pocket Memo 9600
- Digital Pocket Memo 9620

IT REQUIREMENTS

PC requirements

- Pentium IV with 1GHz
- 1 GB RAM
- 250 MB for Microsoft .NET Framework
- 50 MB for application
- Powered USB port (for USB device)

Software requirements

- Windows® 7-SP1/8.1, 32-bit and 64-bit
 - Windows® 10, 64-bit
- For all listed operating systems, it is recommended that the latest service pack available is applied before installing SpeechControl.

DRAGON NATURALLYSPEAKING

Supported Dragon editions:

- Dragon NaturallySpeaking 12.5 Professional
- Dragon NaturallySpeaking 13 Professional
- Dragon NaturallySpeaking 14 Professional Individual
- Dragon Medical Practice Edition 3

Note: In case you are using speech recognition please check if the used Dragon version is compatible with Windows 10! More information on Dragon and Windows 10 compatibility can be found on the Nuance website.

AVAILABILITY

SpeechControl 3.7 can be downloaded from the [Speech Processing website](#) from Mid of June 2016 onwards.

LOGISTIC INFORMATION

The SpeechControl 3.7 software will no longer be by-packed with SpeechMike and foot control products from mid of 2016 onwards.

Latest updates of SpeechControl can be downloaded from the Speech Processing website or by using the automatic upgrade option of the SpeechControl software.

Discover the comprehensive range of professional dictation products from Philips
www.philips.com/dictation

Philips and the Philips' Shield Emblem are registered trademarks of Koninklijke Philips N.V. and are used by Speech Processing Solutions GmbH under license from Koninklijke Philips N.V.

Dragon is a trademark of Nuance, Inc. and is used here under license.

All other trademarks are the property of their respective owners.

© 2016 Speech Processing Solutions GmbH. All rights reserved. Errors and omissions excepted