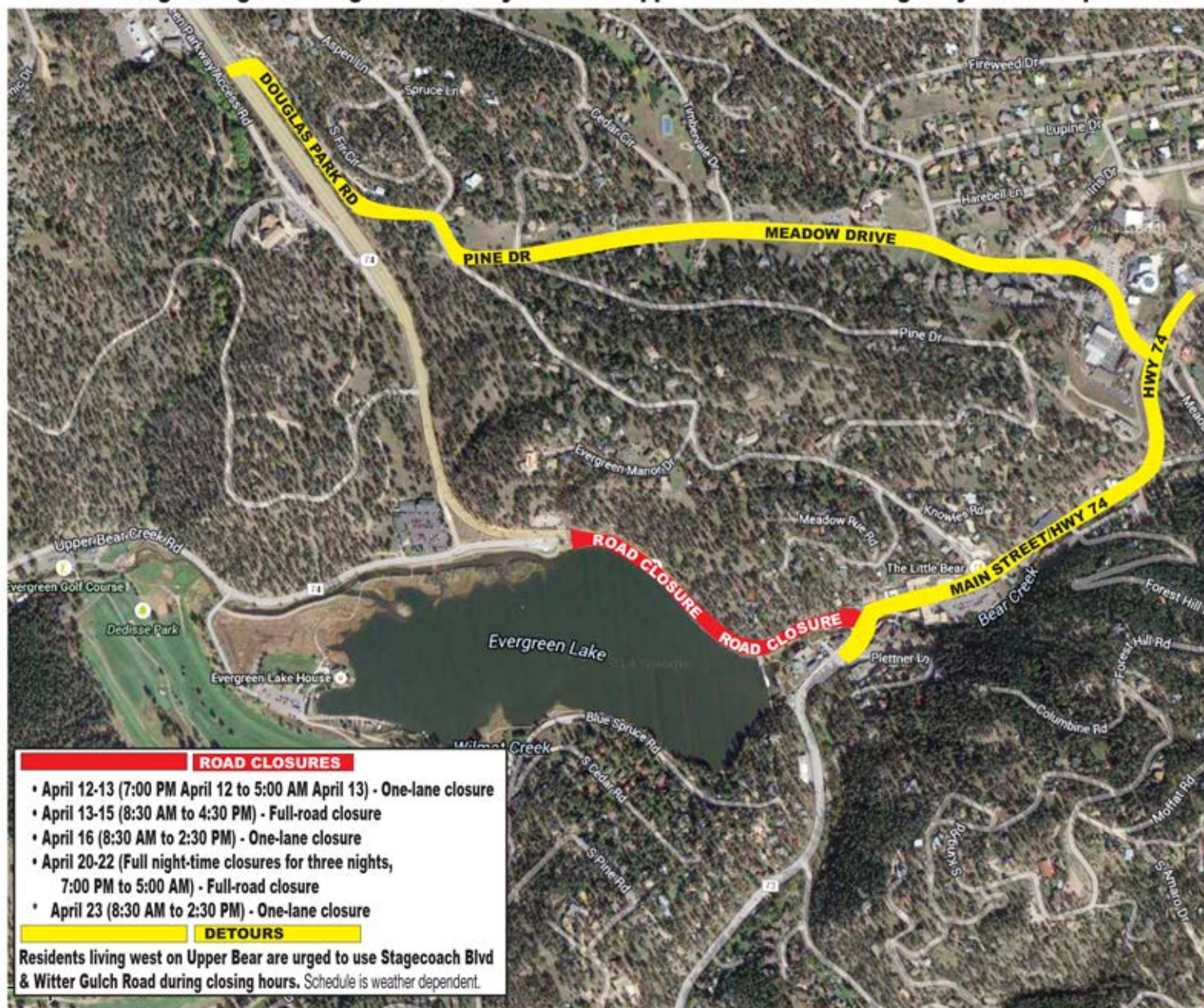


CONNECTOR TRAIL PROJECT ROAD CLOSURES & DETOURS

Road closings along the Evergreen Parkway between Upper Bear Creek and Highway 73 from April 12-23



ROAD CLOSURES

- April 12-13 (7:00 PM April 12 to 5:00 AM April 13) - One-lane closure
- April 13-15 (8:30 AM to 4:30 PM) - Full-road closure
- April 16 (8:30 AM to 2:30 PM) - One-lane closure
- April 20-22 (Full night-time closures for three nights, 7:00 PM to 5:00 AM) - Full-road closure
- * April 23 (8:30 AM to 2:30 PM) - One-lane closure

DETOURS

Residents living west on Upper Bear are urged to use Stagecoach Blvd & Witter Gulch Road during closing hours. Schedule is weather dependent.