

# Building Equity & Opportunity

Douglas County, Colorado



TCHD realizes that we all travel different paths that take us where we are in life. These paths, whether through choices of our own or aspects we have no control over, play a role in shaping a picture of health for each one of us. To improve the health of all residents of the Tri-County jurisdiction, we need to understand these paths and how they can influence our health.

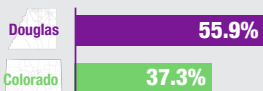
To tackle issues at this level, public health must look outside its traditional understanding of addressing health and begin to ask why disparities exist and what are the drivers of these disparities. How can we use data to target our efforts to address inequality? What do we need to do differently in our communities to address the root causes of poor health?

## Opportunity Indicators represent some of the basic foundations for opportunity in all of our lives



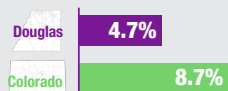
### Education

People 25+ Years Old with a Bachelor's Degree or Higher



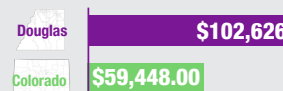
### Unemployment

People 16-64 Years Old in the Civilian Labor Force who are Unemployed



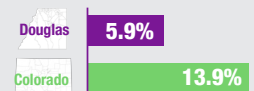
### Income

Median Household Income



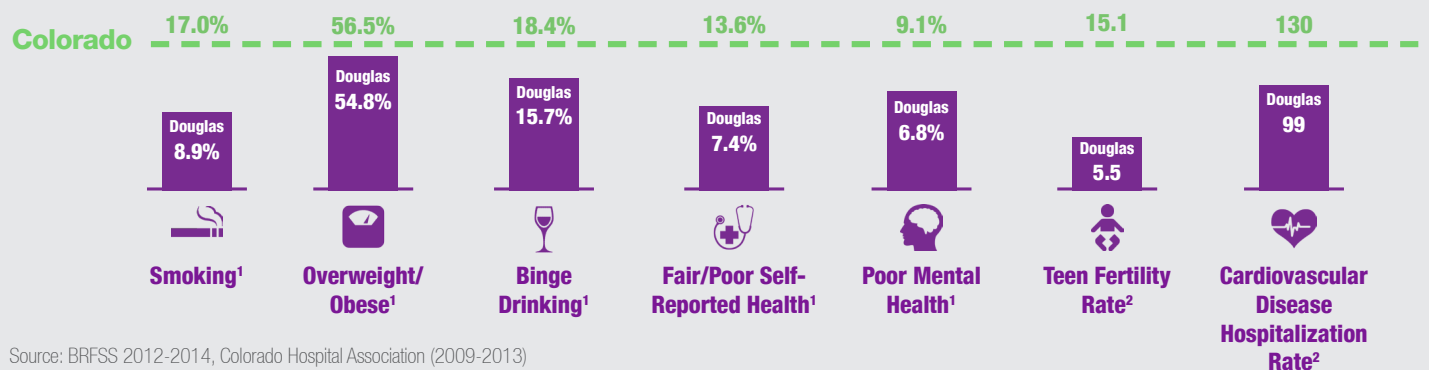
### No Health Insurance

Uninsured Population (of total civilian population)



Source: American Community Survey 5-Year Estimate 2010-2014

## Health Indicators represent important health issues currently affecting our communities



Source: BRFSS 2012-2014, Colorado Hospital Association (2009-2013)



6162 South Willow Drive, Suite 100 Greenwood Village, Colorado

# Opportunity and Community

The ability to access opportunities that allow individuals to fulfill their life goals and passions are often tied to education, income, employment, and healthcare. These form the foundation for opportunities in all our lives. However, adequate education, income, employment, and healthcare are often not equally available depending on where you live.

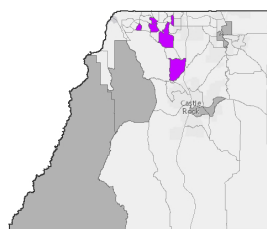
## Where You Live Matters in Douglas County

Similar to most communities across the country, evaluating average trends can mask real problems or successes people experience in a community. Douglas County is no exception. Significant disparities in education, income, employment, and health insurance can be seen between communities in Douglas County.



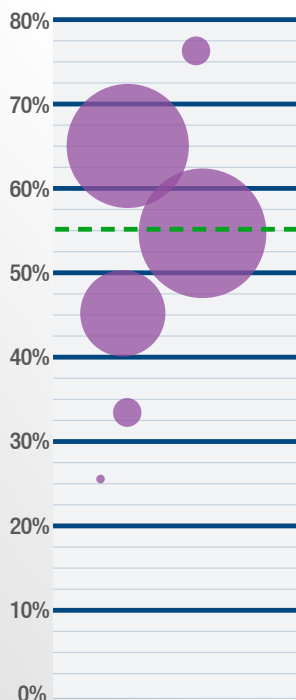
### Education

People 25+ Years Old with a Bachelor's Degree or Higher Education



■ Census Tracts (26.7% - 40.2%)

■ Census Tracts (68.2% - 75.8%)

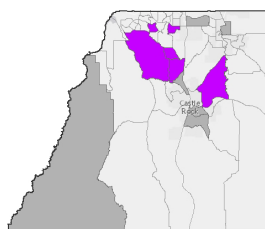


● Number of Census Tracts



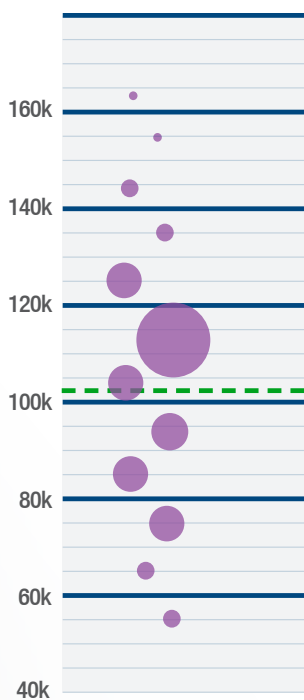
### Income

Median Household Income



■ Census Tracts (\$50,985 - \$70,428)

■ Census Tracts (\$138,750 - \$163,839)

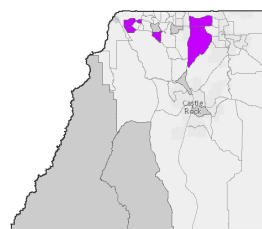


— Douglas County Average



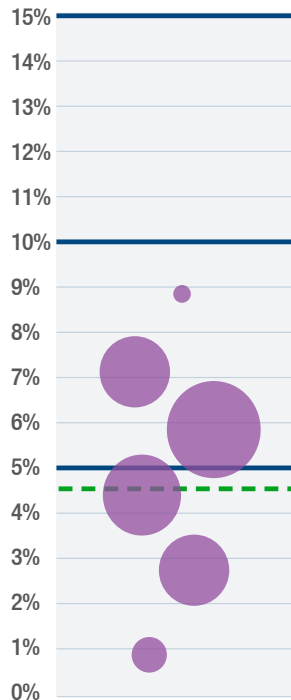
### Unemployment

People 16-64 Years Old in the Civilian Labor Force who are Unemployed



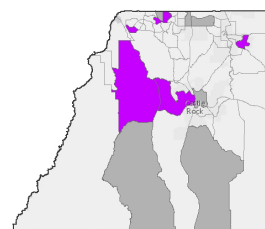
■ Census Tracts (7.1% - 9.8%)

■ Census Tracts (0.3% - 2.2%)



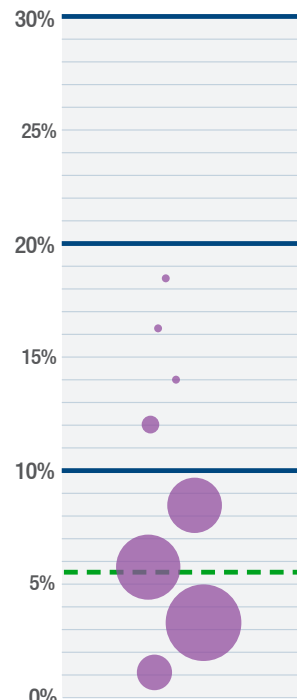
### No Health Insurance

Percent of the Population with No Health Insurance (of the total civilian pop.)



■ Census Tracts (10.8% - 19.8%)

■ Census Tracts (1.1% - 2.3%)



Visualizing the distribution of achievement across education, income, employment, and health insurance in Douglas County indicates a widening gap between those with the least opportunity and those with the most.

Source: American Community Survey 2010-2014 5-Year Estimates

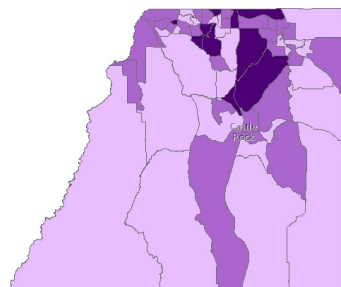
# Opportunity and Race

Race is an important component looking at access to opportunities in Douglas County and Colorado as a whole. Racial divisions can be seen across economic lines, neighborhoods, and opportunity indicators. People of color generally fare lower in educational achievement, income, employment, and insurance status than their white counterparts.

## Race and Where you Live Matter in Douglas County

The ability to choose paths leading to opportunity and health can be influenced by our race and where we live. People of color generally do not experience the same opportunities in life as compared to white residents

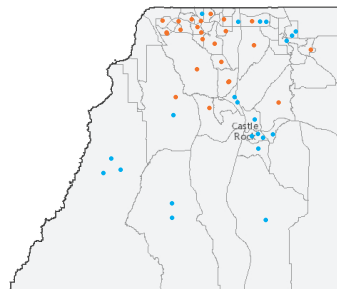
### Percent of the Population who are People of Color



Douglas County

- 5% - 13% of Population are People of Color
- 13% - 20% of Population are People of Color
- 20% - 30% of Population are People of Color

### Opportunity of Life Indicators



Douglas County

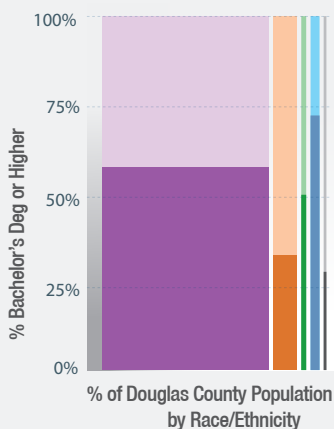
- Highest Scores Related to Education, Unemployment, Income, and Health Insurance (Opportunity of Life Indicators)
- Lowest Scores Related to Education, Unemployment, Income, and Health Insurance (Opportunity of Life Indicators)

Opportunity Indicators represent the accumulation of indicators related to education, employment, income, and health insurance. For those tracts below the county average, they receive an orange dot and for those above the county average, they receive a blue dot. Clustering of blue dots, indicate communities experiencing greater levels of opportunity while clustering of orange dots indicate communities with less opportunity.



### Educational Attainment

Douglas County



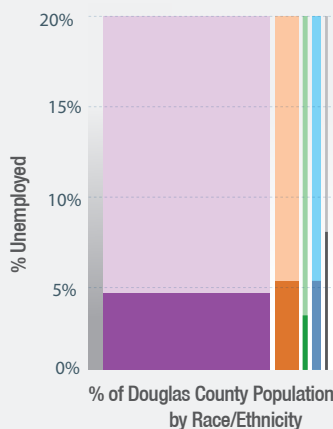
People 25+ Years Old with a Bachelor's Degree or Higher Education

56.9%	White (Non-Hispanic)
35.5%	Hispanic/Latino
50.5%	African American /Black
73.0%	Asian
28.1%	American Indian /AK Native



### Unemployment

Douglas County



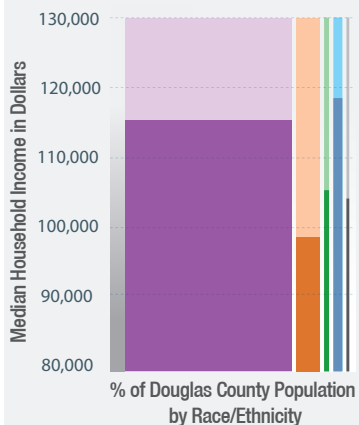
People 16-64 Years Old in the Civilian Labor Force who are Unemployed

4.6%	White (Non-Hispanic)
5.5%	Hispanic/Latino
3.1%	African American /Black
5.7%	Asian
7.9%	American Indian /AK Native



### Household Income

Douglas County



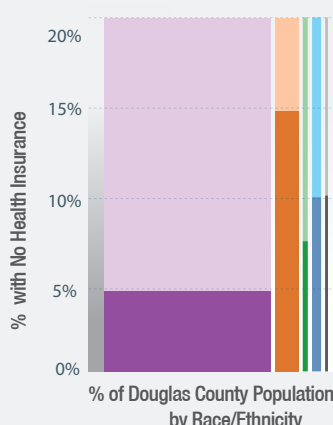
Median Household Income

\$115,922	White (Non-Hispanic)
\$97,283	Hispanic/Latino
\$106,844	African American /Black
\$118,421	Asian
\$105,833	American Indian /AK Native



### Health Insurance

Douglas County



Percent of the Population with No Health Insurance (of the total civilian pop.)

4.8%	White (Non-Hispanic)
14.8%	Hispanic/Latino
7.3%	African American /Black
10.1%	Asian
10.3%	American Indian /AK Native

# Health and Race in Douglas County

The ability to choose paths that lead to good health can be influenced by our race and where we live. Different race/ethnicities in the same community can experience different health outcomes. These differences need to be acknowledged as we address health issues in a community.

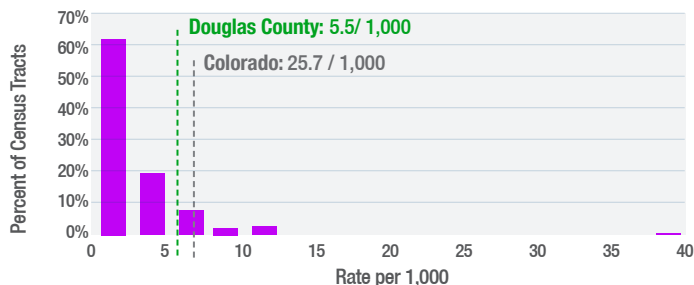
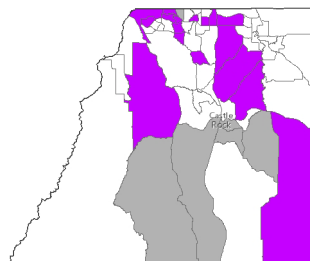
## Health Indicators by Race in Douglas County

Important health issues currently affecting our communities

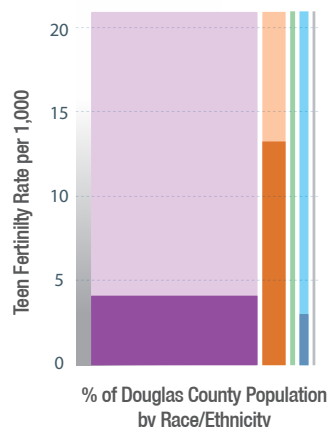


### Teen Fertility Rate

(2011-2013) 15-19 year olds per 1,000



Legend: ■ Percent of Census Tracts --- Douglas County Rate --- Colorado Rate



Rates are live births per 1,000 women in each race/ethnicity group relative to the total population of each race/ethnicity group.

\* Indicates fewer than three events in the category

Source: Vital Statistics Program, Colorado Department of Public Health and Environment.

## Health Indicators By Race in Douglas County

