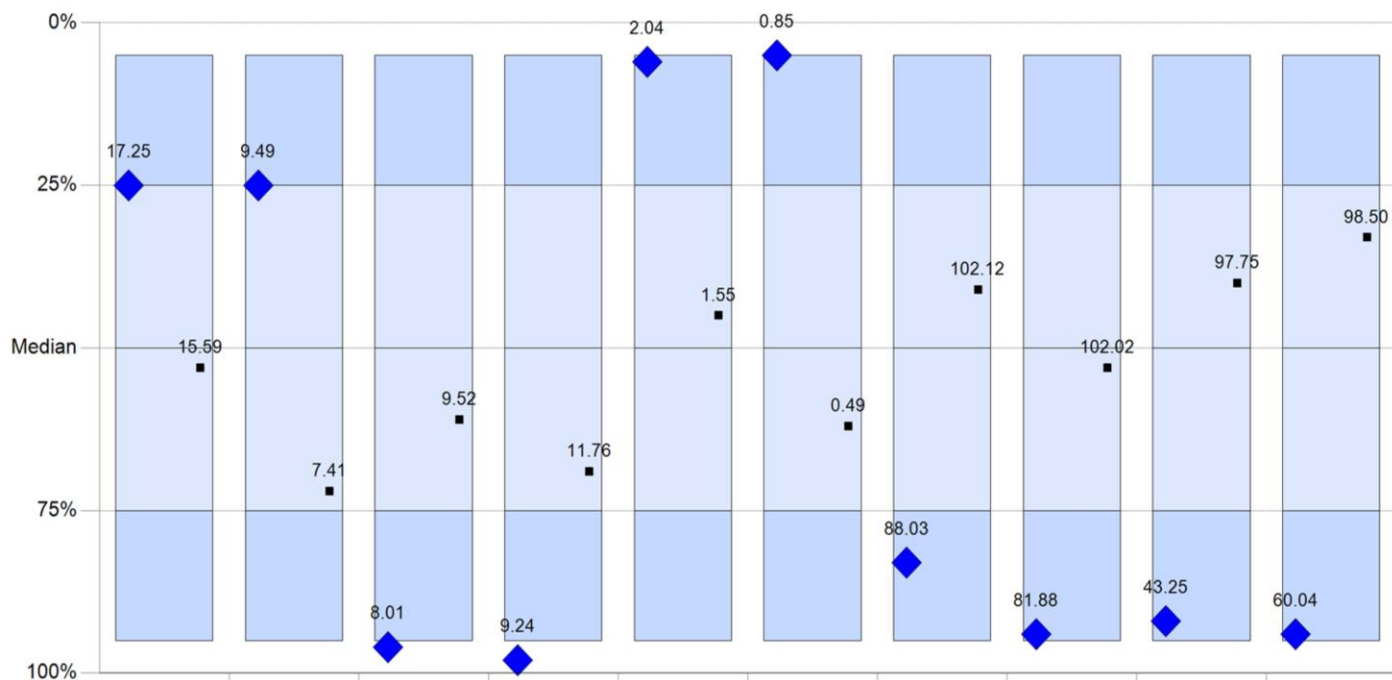


# Toron AMI Global - CDN \$ - As of Dec 31 2015

◆ Toron AMI International Asset Management  
 ■ MSCI Index

As Of: December 31, 2015



Universe:  
eVestment Global Core Equity

	VT	RM	Returns 5 Years		Returns 10 Years		Std Dev 5 Years		Std Dev 10 Years		Sharpe <sup>2</sup> 5 Years		Sharpe <sup>2</sup> 10 Years		UMC <sup>1</sup> 5 Years		UMC <sup>1</sup> 10 Years		DMC <sup>1</sup> 5 Years		DMC <sup>1</sup> 10 Years	
				Rk		Rk		Rk		Rk		Rk		Rk		Rk		Rk		Rk		Rk
5th percentile			19.55		11.10		12.41		15.87		2.08		0.85		116.93		120.37		127.66		110.31	
25th percentile			17.23		9.46		10.69		13.09		1.71		0.64		106.04		108.49		104.47		101.67	
Median			15.78		8.19		9.73		12.21		1.50		0.55		100.27		102.65		92.63		93.07	
75th percentile			14.12		7.29		9.14		11.50		1.29		0.46		93.12		95.59		76.12		83.61	
95th percentile			11.33		5.84		8.15		9.89		0.90		0.32		74.40		79.40		31.54		58.90	
# of Observations			277		159		277		159		277		159		277		159		277		159	
◆ Global Equity Strategy	SA	GF	17.25	25	9.49	25	8.01	96	9.24	98	2.04	6	0.85	5	88.03	83	81.88	94	43.25	92	60.04	94
■ MSCI World Gross Dvds-\$C (Close Rate)	IX	IX	15.59	53	7.41	72	9.52	61	11.76	69	1.55	45	0.49	62	102.12	41	102.02	53	97.75	40	98.50	33

Results displayed in Canadian Dollar (CAD)

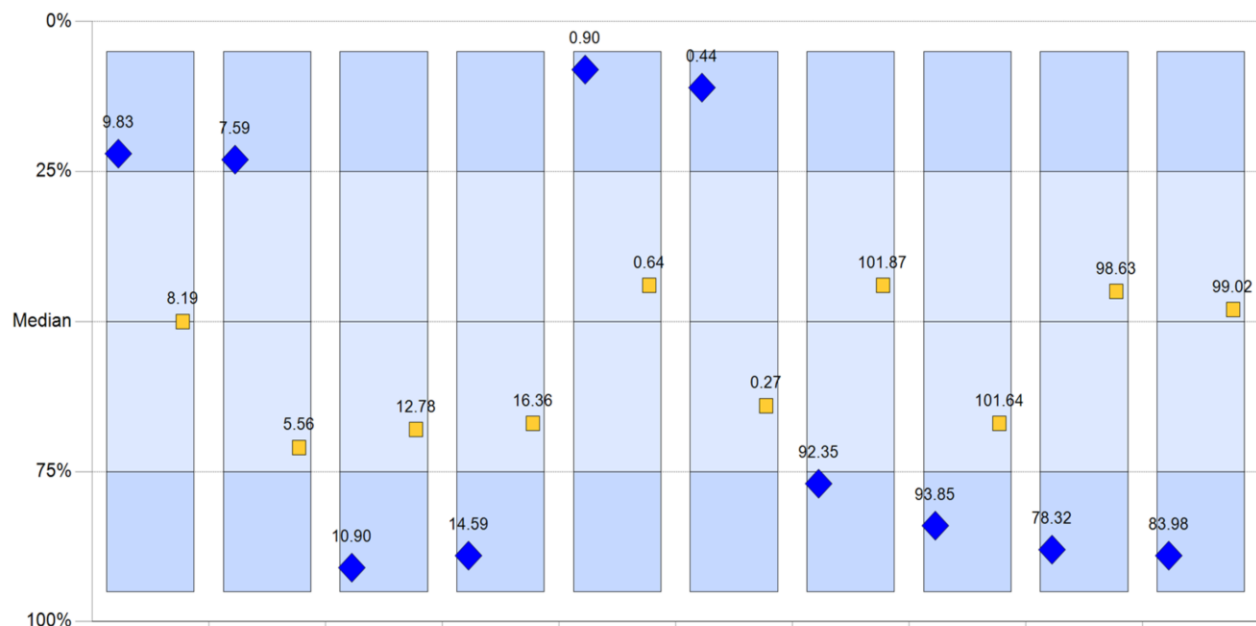
<sup>1</sup> MSCI World Net Dvds-\$C (Close Rate); <sup>2</sup> CIBC WM 91-Day Treasury Bill

James Rider  
 Suite 439-280 Nelson Street Vancouver B.C.  
 Cell 778-882-4773 DD 604-565-7129  
 JR@FxVolResearch.com

# Toron AMI Global - US\$ as of Dec 31 2015

◆ Toron AMI International Asset Management  
 ■ MSCI Index

As Of: December 31, 2015



Universe:  
eVestment Global Core Equity

	VT	RM	Returns 5 Years	Rk	Returns 10 Years	Rk	Std Dev 5 Years	Rk	Std Dev 10 Years	Rk	Sharpe <sup>2</sup> 5 Years	Rk	Sharpe <sup>2</sup> 10 Years	Rk	UMC <sup>1</sup> 5 Years	Rk	UMC <sup>1</sup> 10 Years	Rk	DMC <sup>1</sup> 5 Years	Rk	DMC <sup>1</sup> 10 Years	Rk
5th percentile			11.69		9.20		15.58		20.77		1.05		0.59		116.04		123.51		118.55		112.50	
25th percentile			9.62		7.46		14.15		17.97		0.75		0.37		105.66		111.39		104.62		103.70	
Median			8.16		6.34		13.25		17.08		0.60		0.30		100.61		104.05		97.16		98.79	
75th percentile			6.60		5.41		12.59		16.08		0.48		0.25		93.46		99.75		89.72		92.67	
95th percentile			3.41		3.92		9.97		12.58		0.23		0.15		76.13		75.44		61.64		70.67	
# of Observations			323		185		323		185		323		185		323		185		323		185	
◆ Global Equity Strategy	SA	GF	9.83	22	7.59	23	10.90	91	14.59	89	0.90	8	0.44	11	92.35	77	93.85	84	78.32	88	83.98	89
■ MSCI World-GD	IX	IX	8.19	50	5.56	71	12.78	68	16.36	67	0.64	44	0.27	64	101.87	44	101.64	67	98.63	45	99.02	48

Results displayed in US Dollar (USD)

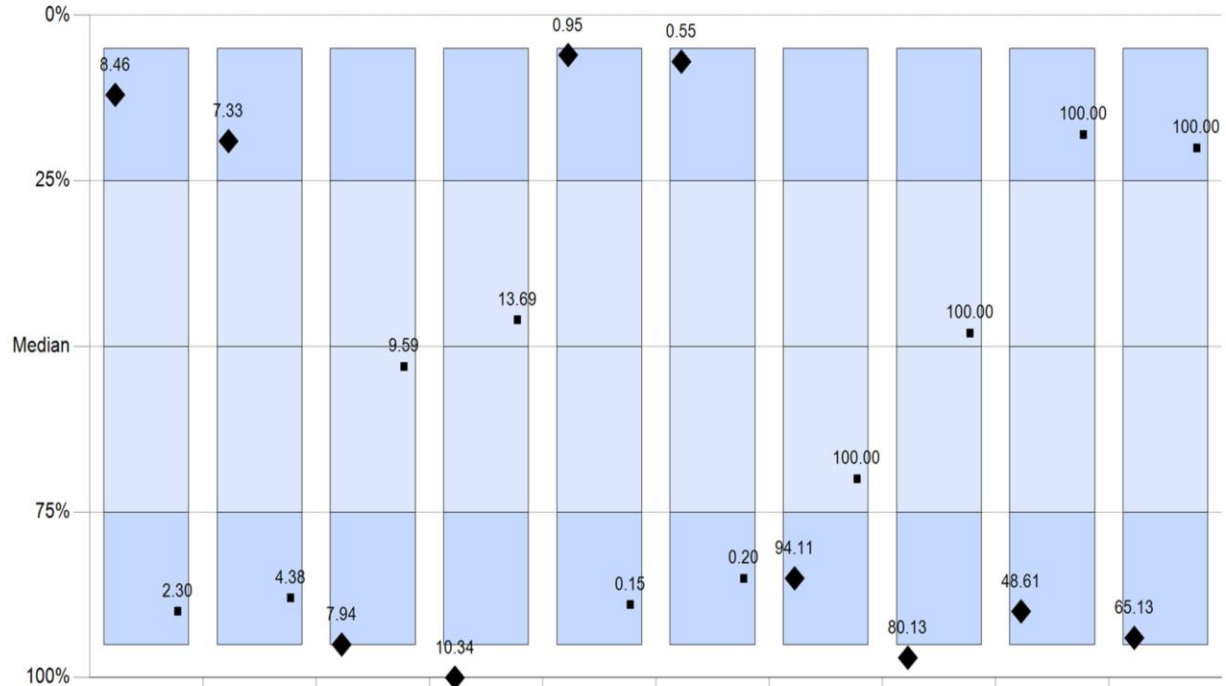
<sup>1</sup>MSCI World-ND; <sup>2</sup>Citigroup 3-Month T-Bill

James Rider  
 Suite 439-280 Nelson Street Vancouver B.C.  
 Cell 778-882-4773 DD 604-565-7129  
 JR@FxVolResearch.com

# Toron AMI Total Return C\$ as of Dec 31 - 2015

◆ Toron AMI International Asset Management  
 ■ Standard & Pours Index

As Of: December 31, 2015



Universe:  
eVestment Canadian All Cap Equity

	VT	RM	Returns 5 Years		Returns 10 Years		Std Dev 5 Years		Std Dev 10 Years		Sharpe <sup>2</sup> 5 Years		Sharpe <sup>2</sup> 10 Years		UMC <sup>1</sup> 5 Years		UMC <sup>1</sup> 10 Years		DMC <sup>1</sup> 5 Years		DMC <sup>1</sup> 10 Years	
				Rk		Rk		Rk		Rk		Rk		Rk		Rk		Rk		Rk		Rk
5th percentile			9.12		8.54		12.34		15.73		0.99		0.58		118.50		112.15		117.15		110.18	
25th percentile			6.93		6.95		10.34		14.21		0.66		0.40		111.58		105.08		96.06		98.33	
Median			5.03		5.79		9.68		13.62		0.41		0.29		104.05		99.64		86.24		93.63	
75th percentile			3.36		4.86		9.05		12.46		0.25		0.24		97.27		94.01		71.66		84.46	
95th percentile			0.94		3.97		7.84		11.57		0.01		0.15		85.44		80.96		37.04		63.50	
# of Observations			99		76		99		76		99		76		99		76		99		76	
◆ Canadian Total Return Equity Strategy	PF	GF	8.46	12	7.33	19	7.94	95	10.34	100	0.95	6	0.55	7	94.11	85	80.13	97	48.61	90	65.13	94
■ S&P/TSX Capped Composite	IX	IX	2.30	90	4.38	88	9.59	53	13.69	46	0.15	89	0.20	85	100.00	70	100.00	48	100.00	18	100.00	20

Results displayed in Canadian Dollar (CAD)

<sup>1</sup>S&P/TSX Capped Composite; <sup>2</sup>CIBC WM 91-Day Treasury Bill

James Rider  
 Suite 439-280 Nelson Street Vancouver B.C.  
 Cell 778-882-4773 DD 604-565-7129  
 JR@FxVolResearch.com

## Source:

eVestment Alliance, LLC and its affiliated entities (collectively, "eVestment") collect information directly from investment management firms and other sources believed to be reliable, however, eVestment does not guarantee or warrant the accuracy, timeliness, or completeness of the information provided and is not responsible for any errors or omissions. Performance results may be provided with additional disclosures available on eVestment's systems and other important considerations such as fees that may be applicable. Not for general distribution and limited distribution may only be made pursuant to client's agreement terms. \* All categories not necessarily included, Totals may not equal 100%. Copyright 2012-2015 eVestment Alliance, LLC. All Rights Reserved.

James Rider  
Suite 439-280 Nelson Street Vancouver B.C.  
Cell 778-882-4773 DD 604-565-7129  
[JR@FxVolResearch.com](mailto:JR@FxVolResearch.com)

---